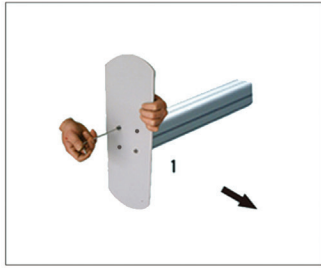


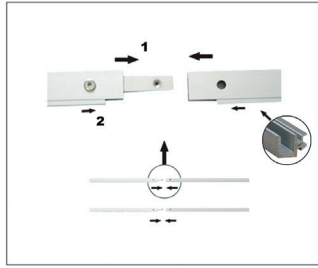
TAHOE 10FT D

QUICK SETUP INSTRUCTIONS



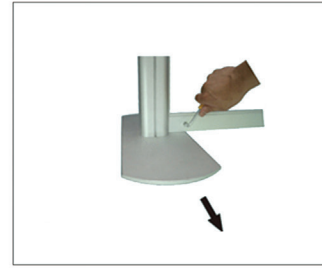
SETUP1

Install both bottom half pole with threads to feet.



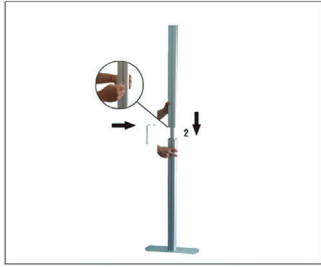
SETUP2

Connect flat bars together.



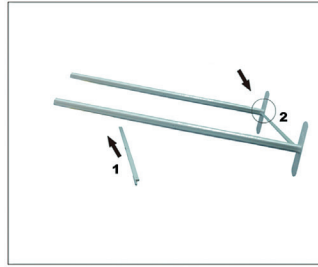
SETUP3

Lock the bottom flat bars onto bottom half poles.



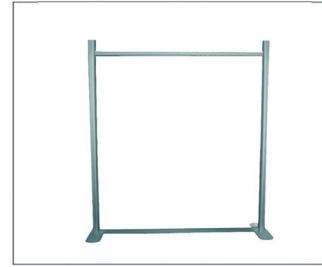
SETUP4

Install top half pole without threads to bottom half pole. Do the same with other side.



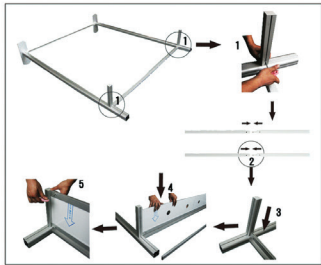
SETUP5

Insert acrylic panel screws to top flat bar.



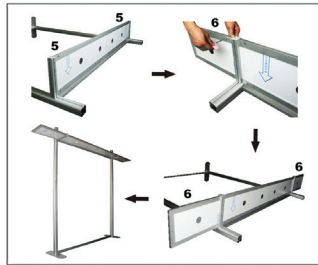
SETUP6

Lock top flat bars onto top half poles. Insert bracket holders and attachment bracket to main poles. Insert acrylic panel screws to main poles. Finish the main profile. Insert top extension poles to top main pole.



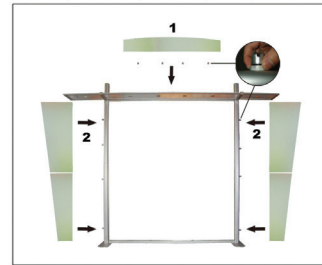
SETUP7

Roof: Lock both roof support profiles onto top half poles. (make sure not to lock onto top extension poles.) Connect large connector flat bars together making two. Insert and lock first large connector flat bar to roof support profiles. Insert both large double light boards and then insert and lock final large connector flat bar to roof support profiles.



SETUP8

Insert and lock completed roof ends which contain medium and small connector flat bar already assemble with single light boards.



SETUP9

Insert acrylic panels.



SETUP10

Insert printing fabric. Place extension caps on top of top extension poles



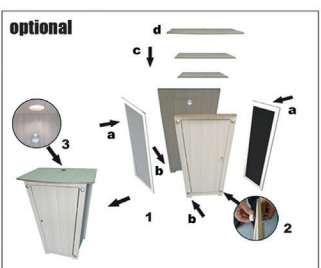
SETUP11

Attach the acrylic shelves to bracket holders. Install the 6 lights with lamp holders.



SETUP12

Connect profile and table accessories then connect them to vertical pole.



SETUP13

Connect profile and table accessories then connect them to vertical pole.

