



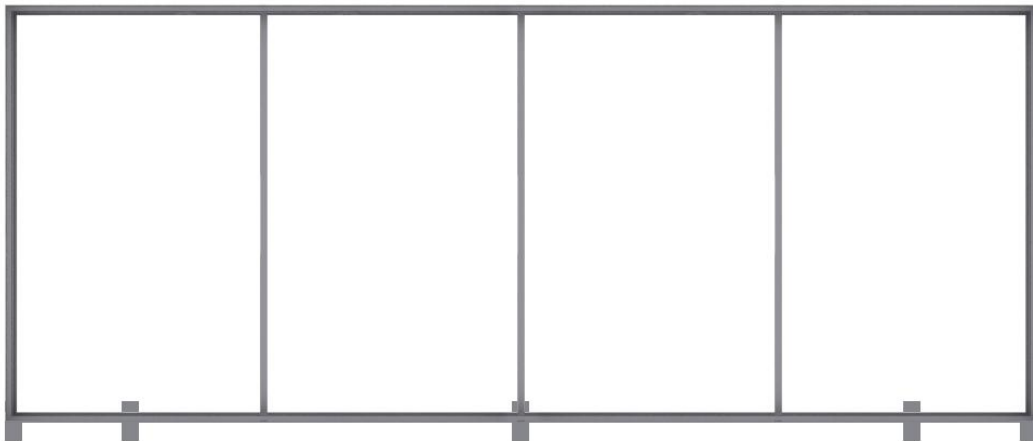
VAIL-180D Non-Backlit

The VAIL-180D collection is a set of standard sizes of large free standing aluminum extrusion frames. The VAIL-180D is a double-sided aluminum extrusion with a profile width of 180mm (7 in.) and a sleek silver anodized finish. Custom dye sublimated fabric graphics install easily with SEG (silicone edge graphics) finishing. Simply tuck the silicone beading into each corner of the frame and then work your way around the edges of the frame to complete graphic installation.





VAIL-180D 20' W x 8" H



OVERVIEW

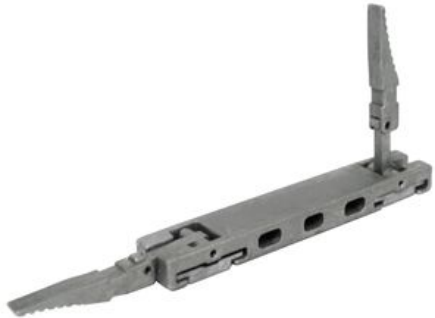
- VAIL-180D: 180mm (7 in) wide aluminum profile
- Silver anodized finish
- Double-sided graphic display
- 3 spines on profile for accessories
 - 2 outer spines for locks
 - Center spine for LED lighting and support struts
- Accepts 3mm x 12 mm keder
- Product Applications:
 - Trade Shows
 - Conferences
 - Any Indoor Event
- 27 standard sizes available
- Graphic Package and Hardware Only orders include La Caja Hard Case(s)
- Custom sizing is available. Customers can contact bd@wsdisplay.com for a custom quote.

LOCKS



Tool Free “L” Corner Connector

- SKU: **RESORT-TFCRNR**
- For square/90° corners
- A tool free corner connector that locks by pushing the levers down to secure



Tool Free Center Connector

- SKU: **RESORT-TFCNT**
- For splicing two extrusions together, tools free solution
- A tool free corner connector that locks by pushing the levers down to secure

SUPPORT STRUTS



Support Strut

- **SKU: VAIL-MAM-40C**
- Vertical support strut to prevent the top profile from bowing once graphic is installed
- They are generally installed where the horizontal profiles are cut/joined



Support Strut Split Connector

- **SKU: ALPINE-42H-CENTCON**
- For splicing two support strut extrusions together
- Requires allen key (included)

FEET



Vail Bottom Mount Foot

- **SKU: VAIL-BF**
- Mounts to bottom profile of frame with bolts and wingnuts



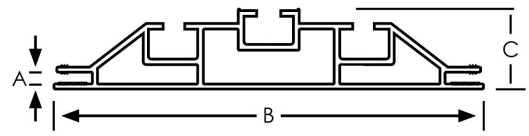
Vail Side Mount Foot

- **SKU: VAIL-SF-SET**
- Mounts to the bottom of the vertical profiles with bolts and wingnuts

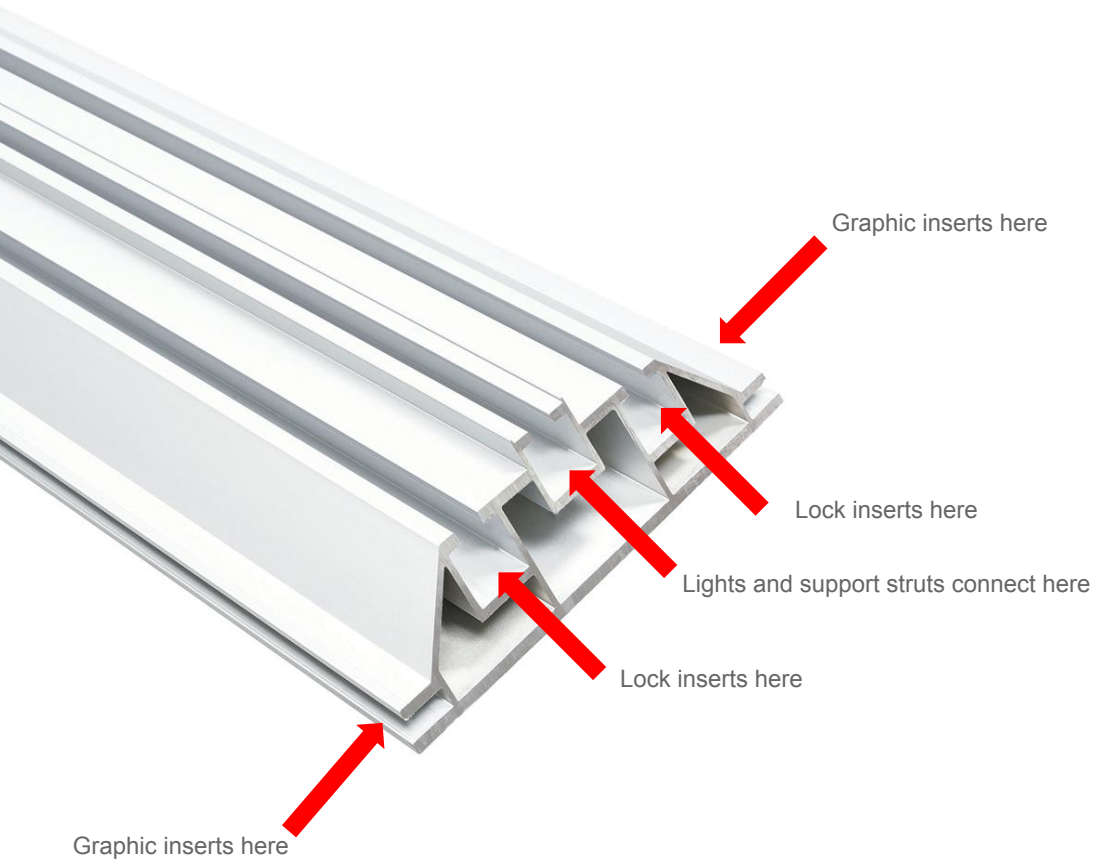


PROFILE DETAILS

- A** = 4 mm.
- B** = 180 mm.
- C** = 34 mm.



VAIL-180D Profile Measurements



With RESORT-TFCRNR installed



HARDWARE ONLY PARTS LISTS

Frame Size	Horizontal VAIL-180D	Vertical VAIL-180D	RESORT-TFCRNR	RESORT-TFCNT	VAIL-MAM-40C	ALPINE-42H-CENTCON	VAIL-SF-SET	VAIL-BF	ALLEN-4mm	LACAJA
8 x 10	4	4	8	4	2	1	2	2	1	1
8 x 11	4	4	8	4	2	1	2	2	1	1
8 x 12	4	4	8	4	2	1	2	2	1	1
9 x 10	4	4	8	4	2	1	2	2	1	1
9 x 11	4	4	8	4	2	1	2	2	1	1
9 x 12	4	4	8	4	2	1	2	2	1	1
10 x 8	4	4	8	8	2	1	2	2	1	1
10 x 9	4	4	8	8	2	1	2	2	1	1
10 x 10	4	4	8	8	2	1	2	2	1	1
11 x 8	4	6	8	12	4	2	2	2	1	1
11 x 9	4	6	8	12	4	2	2	2	1	1
11 x 10	4	6	8	12	4	2	2	2	1	1
12 x 8	4	6	8	12	4	2	2	3	1	1
12 x 9	4	6	8	12	4	2	2	3	1	1
12 x 10	4	6	8	12	4	2	2	3	1	1
15 x 8	6	6	8	12	4	2	2	3	1	1
15 x 9	6	6	8	12	4	2	2	3	1	1
15 x 10	6	6	8	12	4	2	2	3	1	1
20 x 8	8	8	8	16	6	3	2	4	1	2
20 x 9	8	8	8	16	6	3	2	4	1	2
20 x 10	8	8	8	16	6	3	2	4	1	2
25 x 8	10	10	8	20	8	4	2	5	1	2
25 x 9	10	10	8	20	8	4	2	5	1	2
25 x 10	10	10	8	20	8	4	2	5	1	2
30 x 8	12	12	8	24	10	5	2	6	1	2
30 x 9	12	12	8	24	10	5	2	6	1	2
30 x 10	12	12	8	24	10	5	2	6	1	2

SKUS + SHIP INFO

Frame Size	Box Dims	Box Qty	Weight (lbs)
Vall180DB-8x10GO	Poly Bag	1	4
Vall180DB-8x10GP	87" x 18" x 11.5"	1	50
Vall180DB-8x10HO	87" x 18" x 11.5"	1	42
Vall180DB-8x11GO	Poly Bag	1	5
Vall180DB-8x11GP	87" x 18" x 11.5"	1	57
Vall180DB-8x11HO	87" x 18" x 11.5"	1	47
Vall180DB-8x12GO	Poly Bag	1	5
Vall180DB-8x12GP	87" x 18" x 11.5"	1	58
Vall180DB-8x12HO	87" x 18" x 11.5"	1	48
Vall180DB-9x10GO	Poly Bag	1	6
Vall180DB-9x10GP	87" x 18" x 11.5"	1	51
Vall180DB-9x10HO	87" x 18" x 11.5"	1	39
Vall180DB-9x11GO	Poly Bag	1	5
Vall180DB-9x11GP	87" x 18" x 11.5"	1	58
Vall180DB-9x11HO	87" x 18" x 11.5"	1	48
Vall180DB-9x12GO	Poly Bag	1	6
Vall180DB-9x12GP	87" x 18" x 11.5"	1	61
Vall180DB-9x12HO	87" x 18" x 11.5"	1	49
Vall180DB-10x8GO	Poly Bag	1	4
Vall180DB-10x8GP	87" x 18" x 11.5"	1	50
Vall180DB-10x8HO	87" x 18" x 11.5"	1	42
Vall180DB-10x9GO	Poly Bag	1	5
Vall180DB-10x9GP	87" x 18" x 11.5"	1	53
Vall180DB-10x9HO	87" x 18" x 11.5"	1	43
Vall180DB-10x10GO	Poly Bag	1	5
Vall180DB-10x10GP	87" x 18" x 11.5"	1	62
Vall180DB-10x10HO	87" x 18" x 11.5"	1	52
Vall180DB-11x8GO	Poly Bag	1	5
Vall180DB-11x8GP	87" x 18" x 11.5"	1	62
Vall180DB-11x8HO	87" x 18" x 11.5"	1	52
Vall180DB-11x9GO	Poly Bag	1	5
Vall180DB-11x9GP	87" x 18" x 11.5"	1	63
Vall180DB-11x9HO	87" x 18" x 11.5"	1	53
Vall180DB-11x10GO	Poly Bag	1	6
Vall180DB-11x10GP	87" x 18" x 11.5"	1	66
Vall180DB-11x10HO	87" x 18" x 11.5"	1	54
Vall180DB-12x8GO	Poly Bag	1	5
Vall180DB-12x8GP	87" x 18" x 11.5"	1	65
Vall180DB-12x8HO	87" x 18" x 11.5"	1	55
Vall180DB-12x9GO	Poly Bag	1	6
Vall180DB-12x9GP	87" x 18" x 11.5"	1	69
Vall180DB-12x9HO	87" x 18" x 11.5"	1	57

Frame Size	Box Dims	Box Qty	Weight (lbs)
Vall180DB-12x10GO	Poly Bag	1	6
Vall180DB-12x10GP	87" x 18" x 11.5"	1	69
Vall180DB-12x10HO	87" x 18" x 11.5"	1	57
Vall180DB-15x8GO	Poly Bag	1	6
Vall180DB-15x8GP	87" x 18" x 11.5"	1	68
Vall180DB-15x8HO	87" x 18" x 11.5"	1	56
Vall180DB-15x9GO	Poly Bag	1	7
Vall180DB-15x9GP	87" x 18" x 11.5"	1	71
Vall180DB-15x9HO	87" x 18" x 11.5"	1	57
Vall180DB-15x10GO	Poly Bag	1	8
Vall180DB-15x10GP	87" x 18" x 11.5"	1	73
Vall180DB-15x10HO	87" x 18" x 11.5"	1	57
Vall180DB-20x8GO	Poly Bag	1	8
Vall180DB-20x8GP	87" x 18" x 11.5"	2	86
Vall180DB-20x8HO	87" x 18" x 11.5"	2	70
Vall180DB-20x9GO	Poly Bag	1	9
Vall180DB-20x9GP	87" x 18" x 11.5"	2	97
Vall180DB-20x9HO	87" x 18" x 11.5"	2	79
Vall180DB-20x10GO	Poly Bag	1	10
Vall180DB-20x10GP	87" x 18" x 11.5"	2	93
Vall180DB-20x10HO	87" x 18" x 11.5"	2	73
Vall180DB-25x8GO	Poly Bag	1	10
Vall180DB-25x8GP	87" x 18" x 11.5"	2	102
Vall180DB-25x8HO	87" x 18" x 11.5"	2	82
Vall180DB-25x9GO	Poly Bag	1	11
Vall180DB-25x9GP	87" x 18" x 11.5"	2	107
Vall180DB-25x9HO	87" x 18" x 11.5"	2	85
Vall180DB-25x10GO	Poly Bag	1	13
Vall180DB-25x10GP	87" x 18" x 11.5"	2	211
Vall180DB-25x10HO	87" x 18" x 11.5"	2	85
Vall180DB-30x8GO	Poly Bag	1	12
Vall180DB-30x8GP	87" x 18" x 11.5"	2	118
Vall180DB-30x8HO	87" x 18" x 11.5"	2	96
Vall180DB-30x9GO	Poly Bag	1	14
Vall180DB-30x9GP	87" x 18" x 11.5"	2	122
Vall180DB-30x9HO	87" x 18" x 11.5"	2	98
Vall180DB-30x10GO	Poly Bag	1	15
Vall180DB-30x10GP	87" x 18" x 11.5"	2	127
Vall180DB-30x10HO	87" x 18" x 11.5"	2	97

GRAPHIC INFO

- **Material:** Stretch Fabric (INV-FAB-STRETCH)
- **Print Process:** Paper Transfer Dye Sublimation
- **Finishing:** Silicone Edge Graphic (SEG) Finishing w/12mm x 3mm Keder
- **Graphic Options:**
 - Double Sided Graphics Only
- **Production Time:** 3 business days for up to 2 sets
- **Locations:** PA and PFC
- **Rush Production:** Not Available.



Stretch - OC

Thickness	Printing Process	Finishing	Maximum Media Width
8.08 oz	Dye Sublimation Paper Transfer	Soft Look Bright Colors	94"

SHIPPING & WARRANTY

Shipping

- Graphic Package ship from: PFC
- Graphic Only ship from: PFC
- Hardware Only ship from: PFC

Warranty

- 1 year warranty on graphics
- Lifetime warranty on hardware

Returns

- RMA's will be shipped back to CA or PA

Shipping Dimensions

- Varies depending on size of frame. Reference Slide 9 for full details

