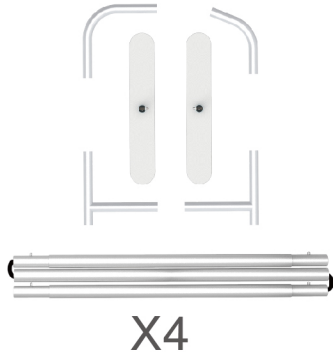


### PARTS

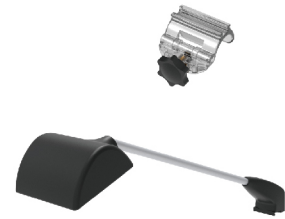
(1) Hardware



(2) Graphic printing fabric banner

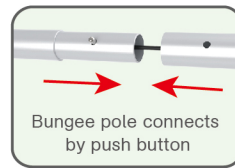


(3) LED Light  
Light Clips



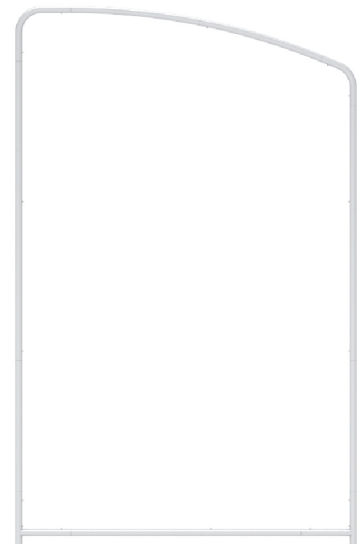
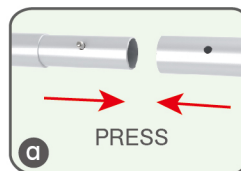
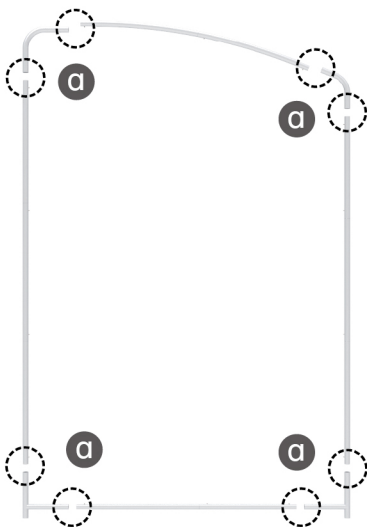
#### STEP 01

To connect the poles according to the labellings



#### STEP 02

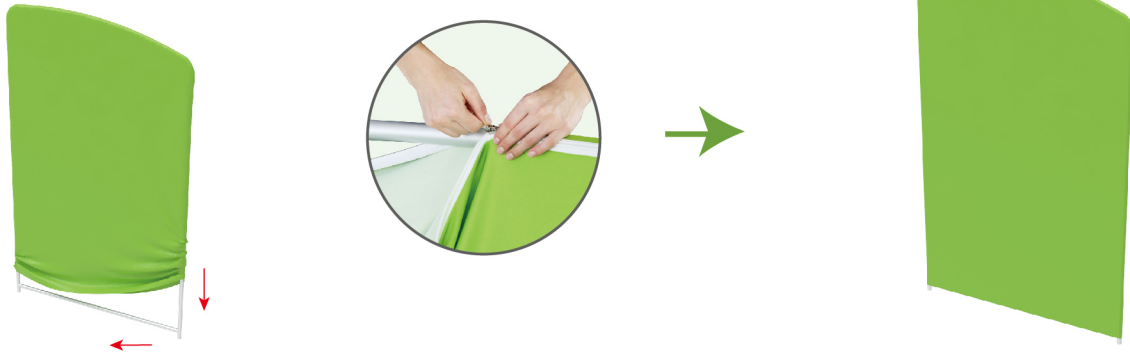
To use corner pieces to connect the poles to be display stand



### PARTS

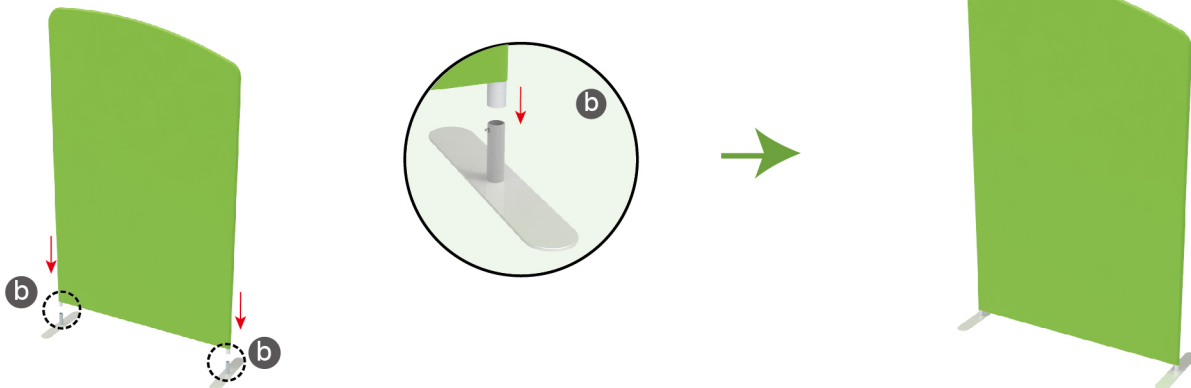
#### STEP 03

To slide the fabric banner on the frame from top and zip up at bottom



#### STEP 04

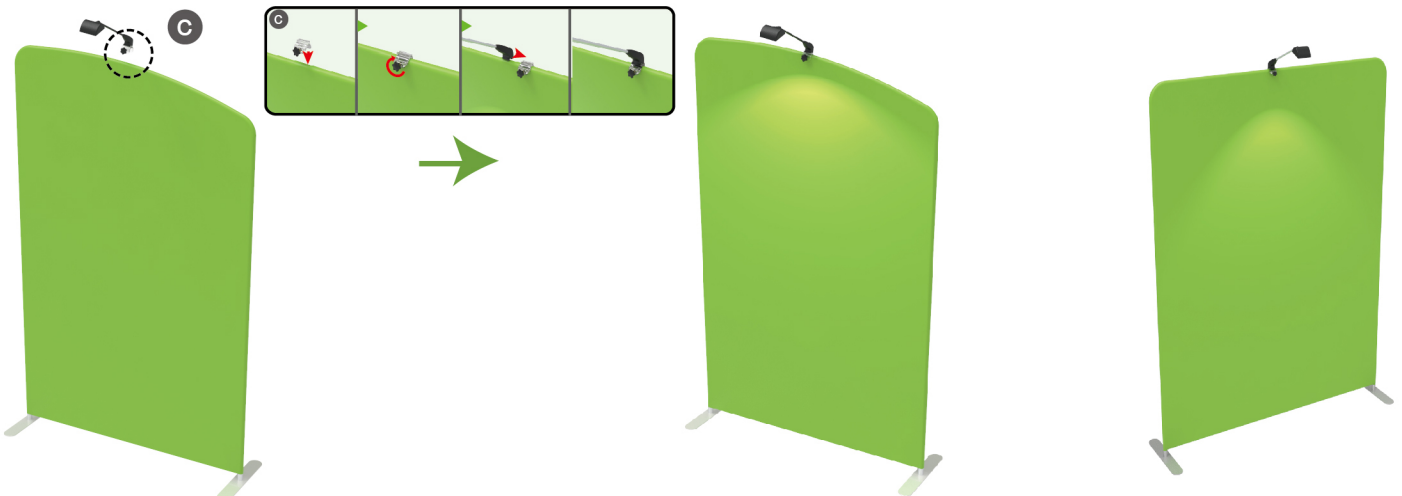
To assemble the stand feet in position



#### STEP 05

Install LED light

To repeat the assembly steps to install another display stand



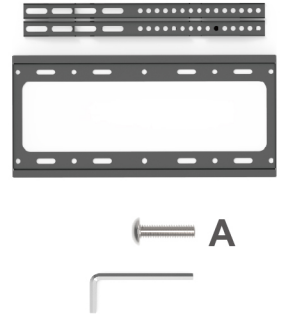
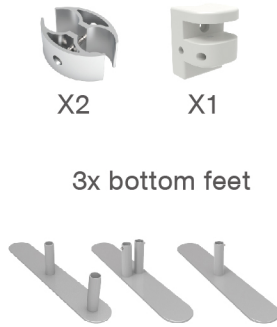
### PARTS

(1) Booth Set

C clip x 2  
Clamp x 1

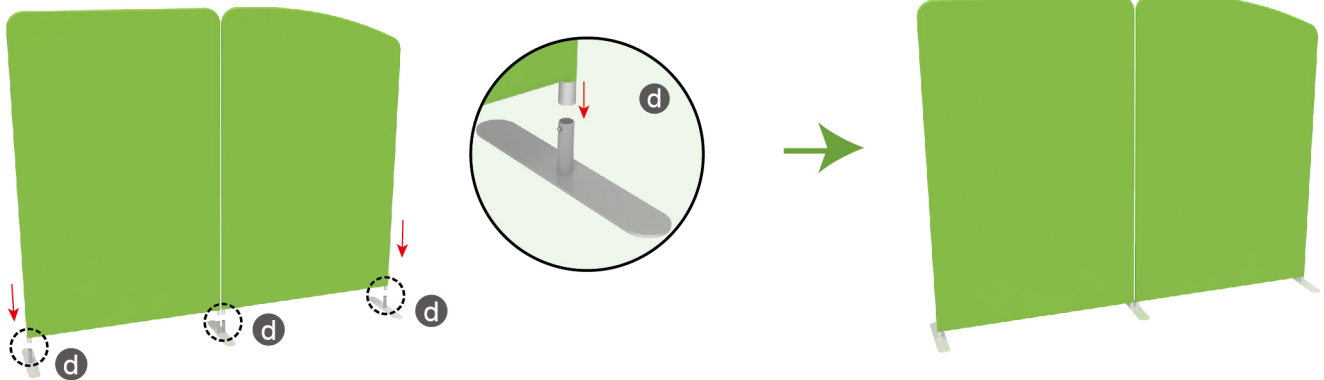
1x shelf  
1x Upright pole  
for shelf

1x TV mount and screw bag  
1x Allen Key



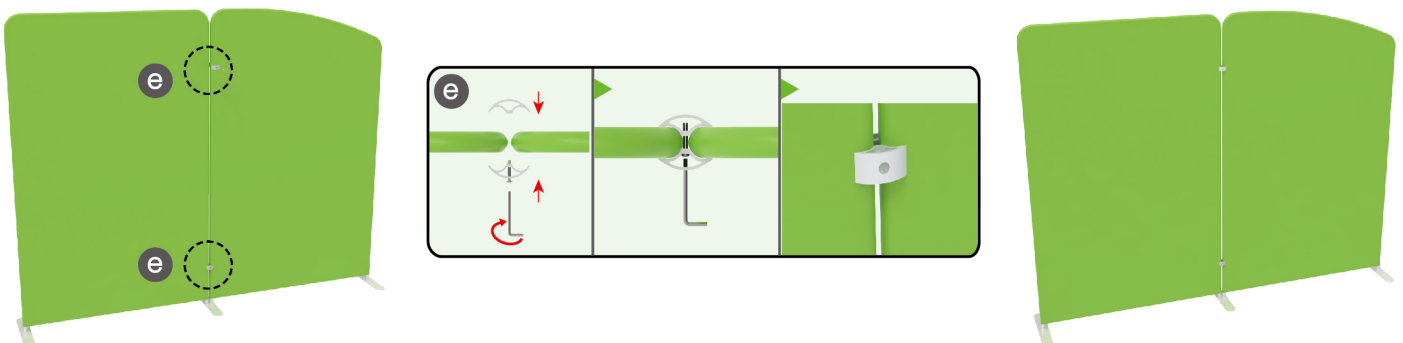
#### STEP 01

To assemble the stand feet in position



#### STEP 02

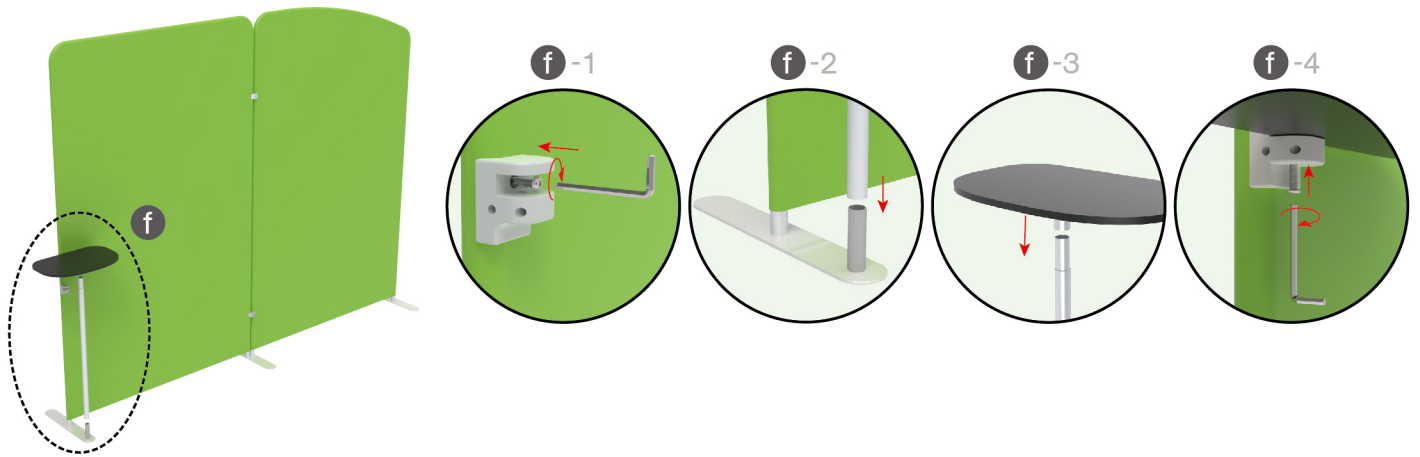
To use C clip to connect 2 display stand perfectly



### PARTS

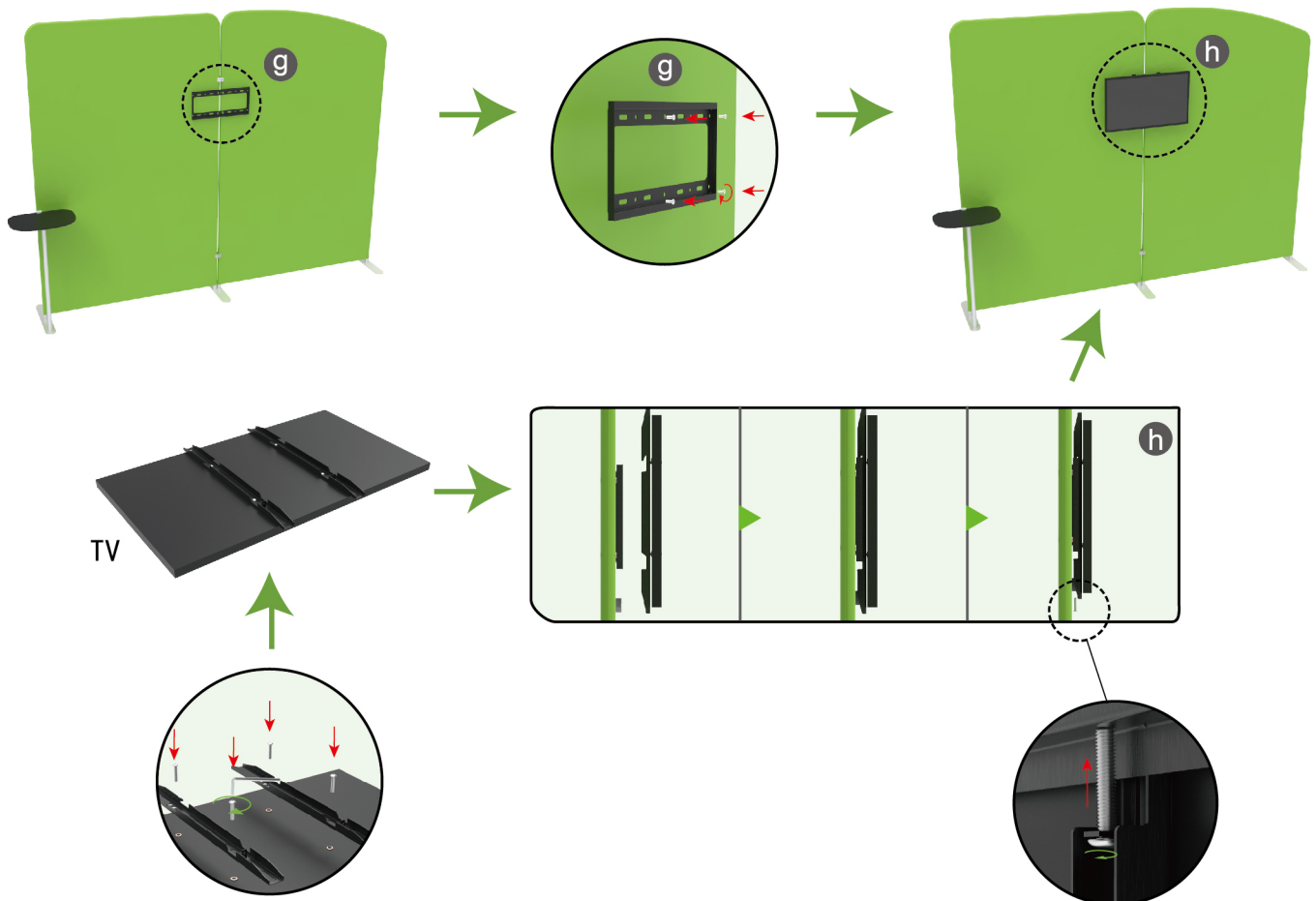
#### STEP 03

To install the shelf in position



#### STEP 04

To install the TV mount in position



## PARTS

Same Assembly Steps for below Booths



10X10ft-Booth-A



10X10ft-Booth-B



10x10FT-BOOTH-03



10x10FT-BOOTH-13