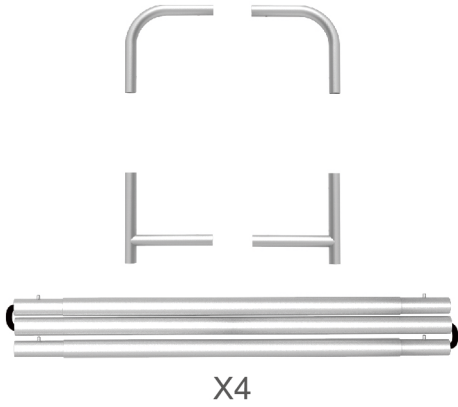


PARTS

(1) Hardware

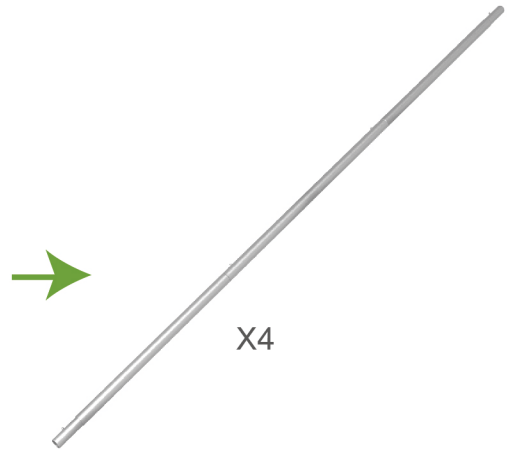
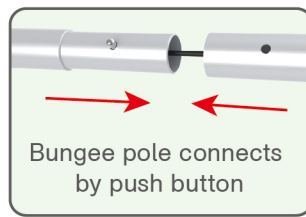
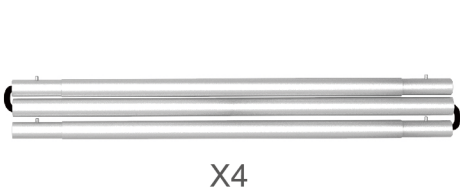


(2) Graphic printing fabric banner



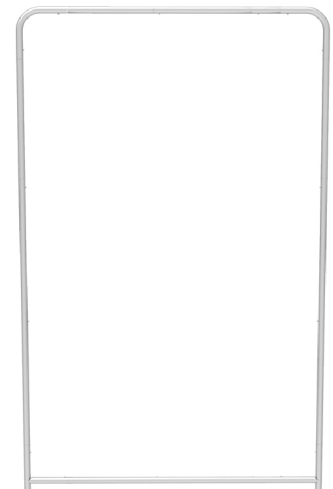
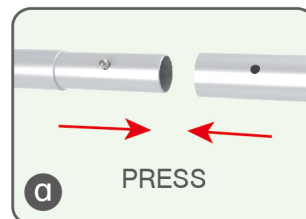
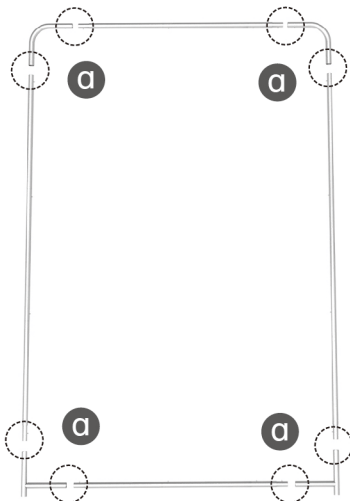
STEP 01

To connect the poles according to the labellings



STEP 02

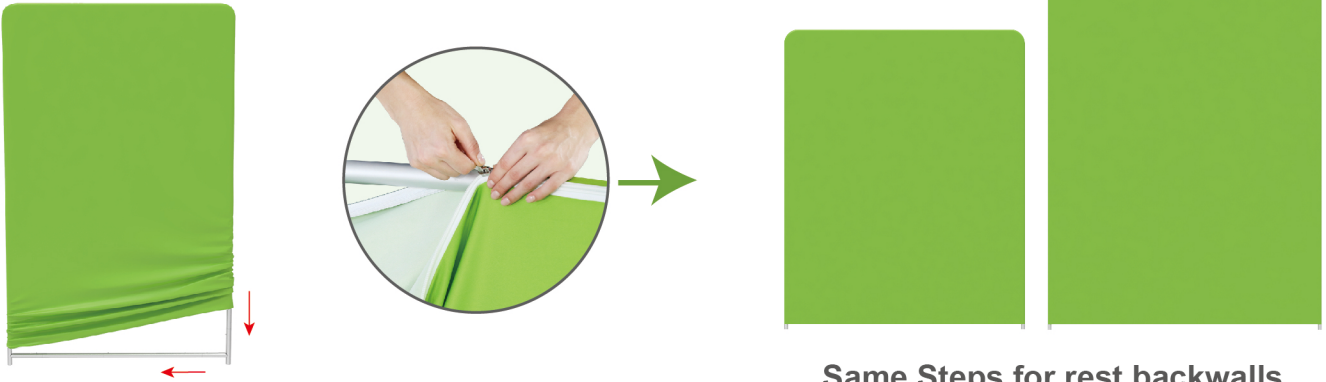
To connect the long poles by corner pieces according to labellings



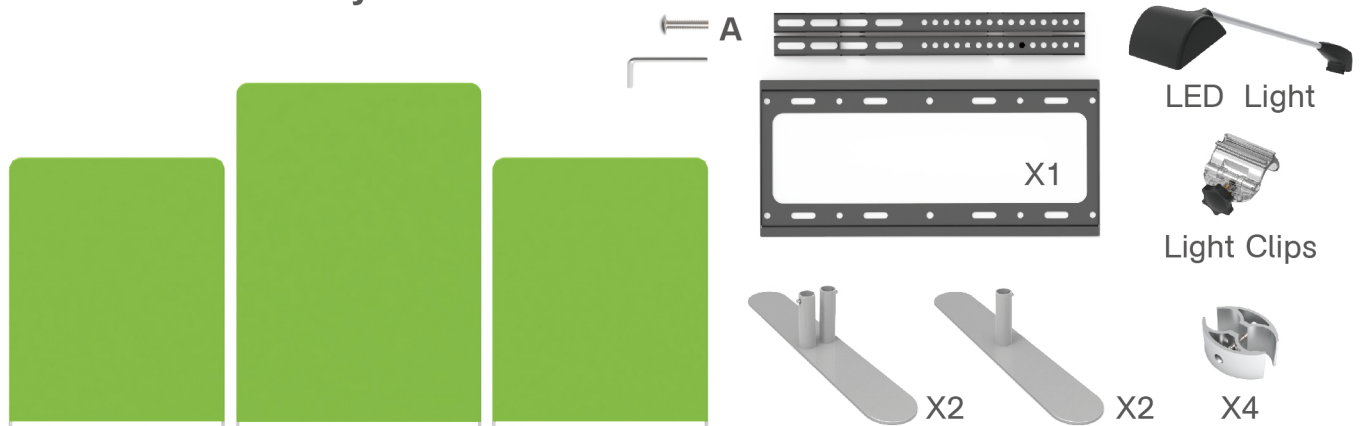
PARTS

STEP 03

To slide the fabric banner on the frame from top and zip up at bottom

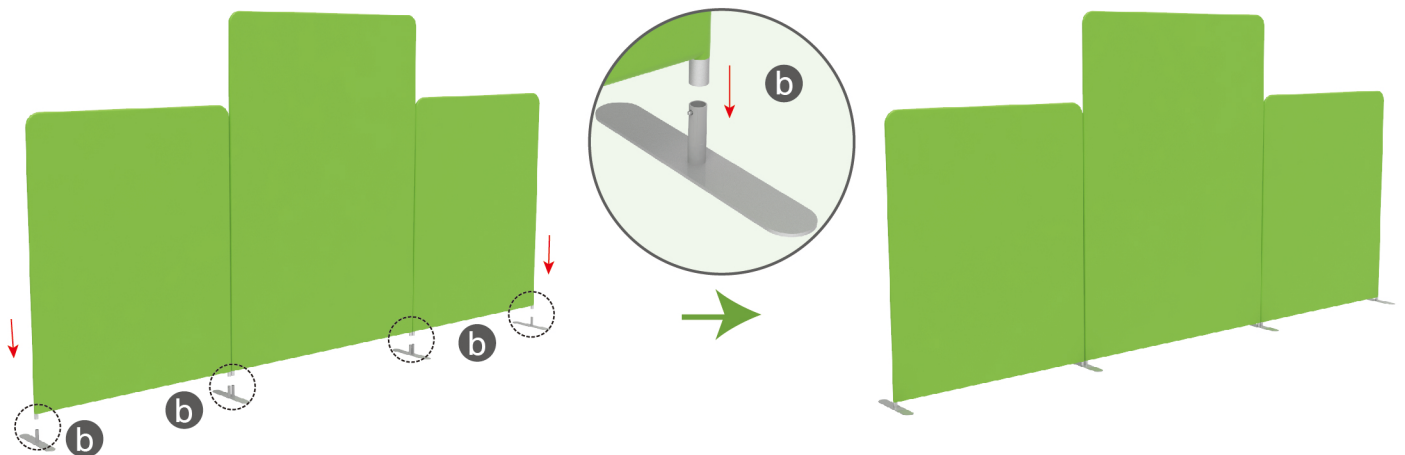


Booth Set Assembly



STEP 01

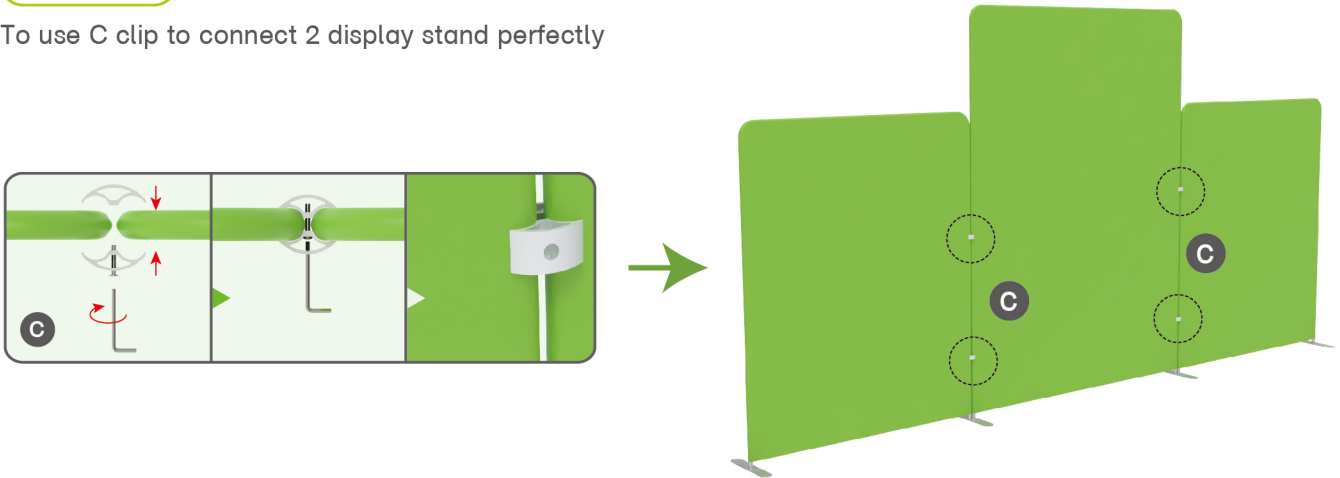
To assemble the stand feet in position



PARTS

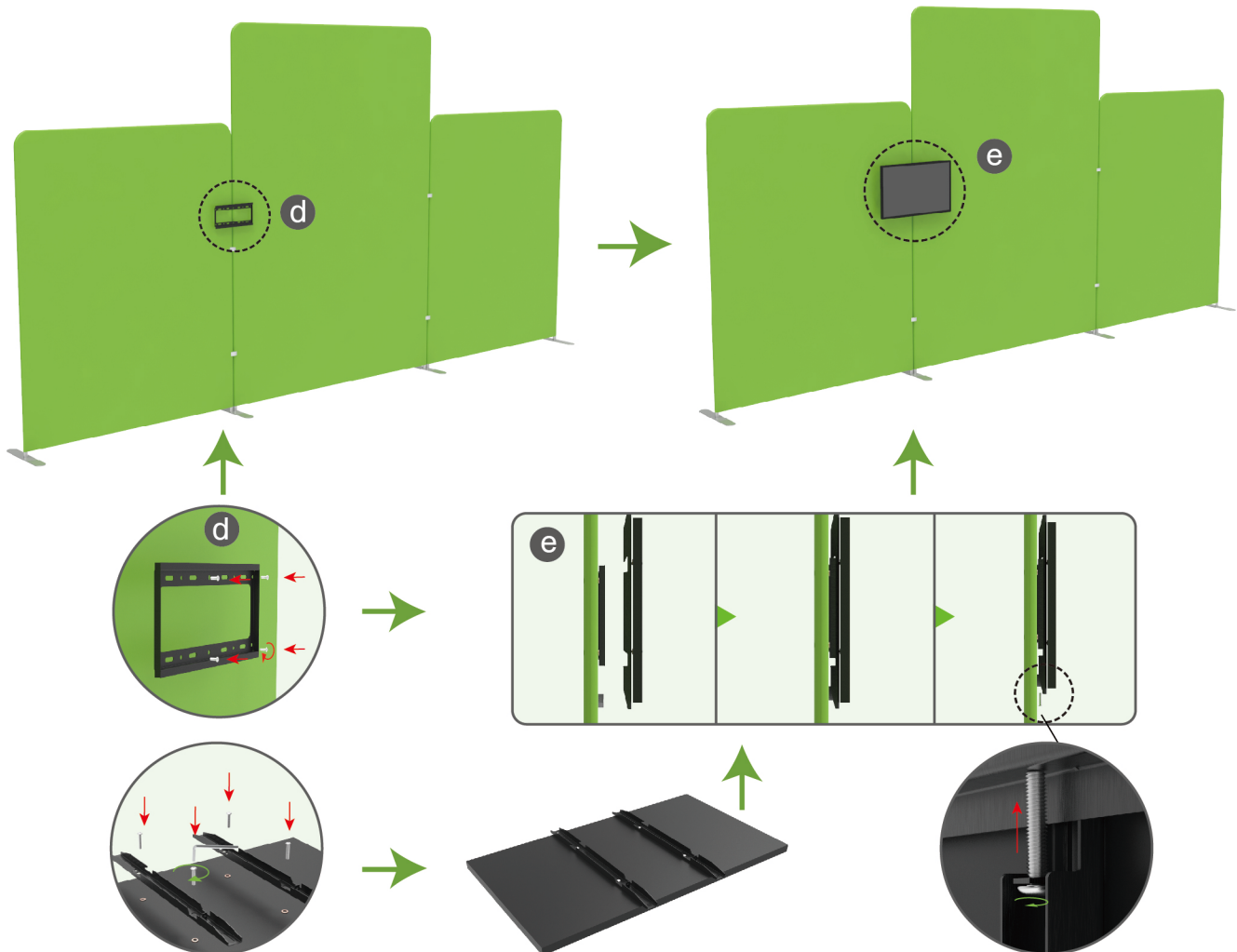
STEP 02

To use C clip to connect 2 display stand perfectly



STEP 03

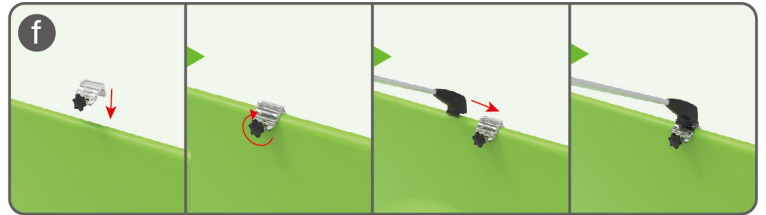
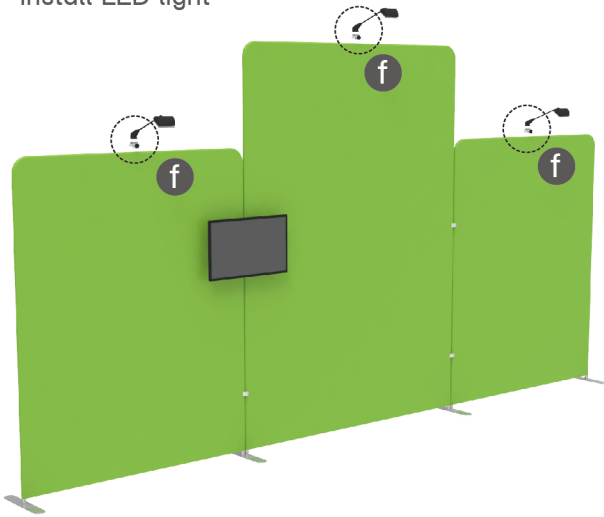
To install the TV mount in position



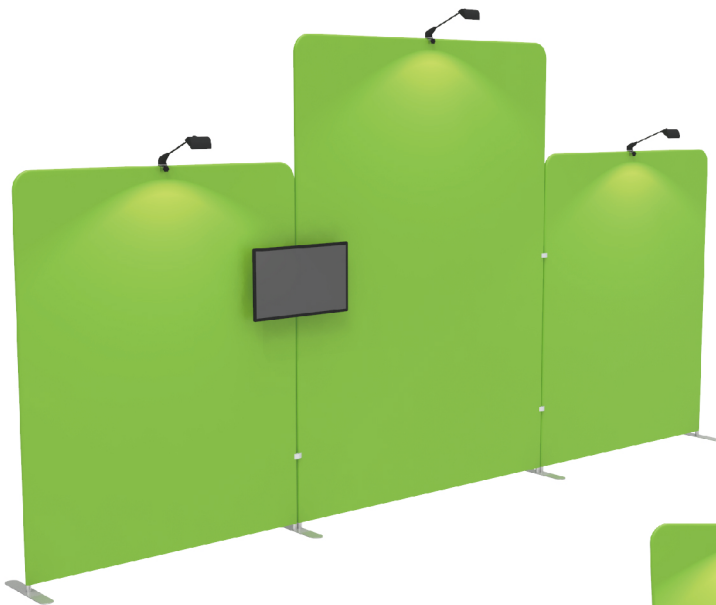
PARTS

STEP 04

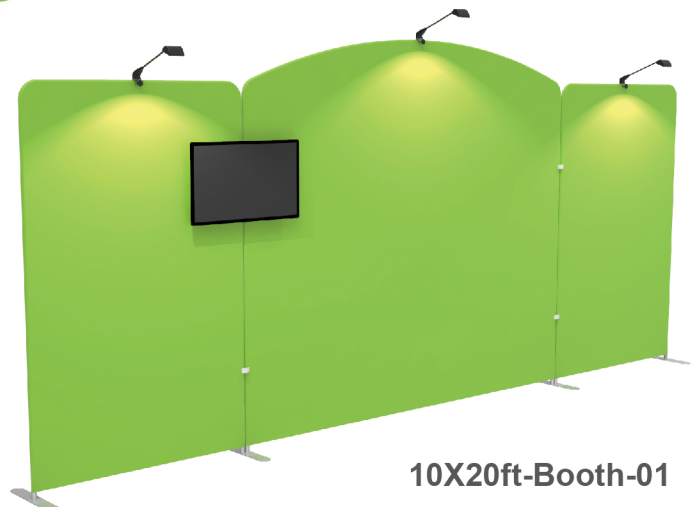
Install LED light



SAME STEPS FOR 10X20ft Booth-01



10X20ft-Booth-L



10X20ft-Booth-01