

Step 1: Attach lower column to base plate with (2) **Short Knobs**;
Attach upper column to canopy with (2) **Short Knobs**;
Cover with **Gusset Caps**



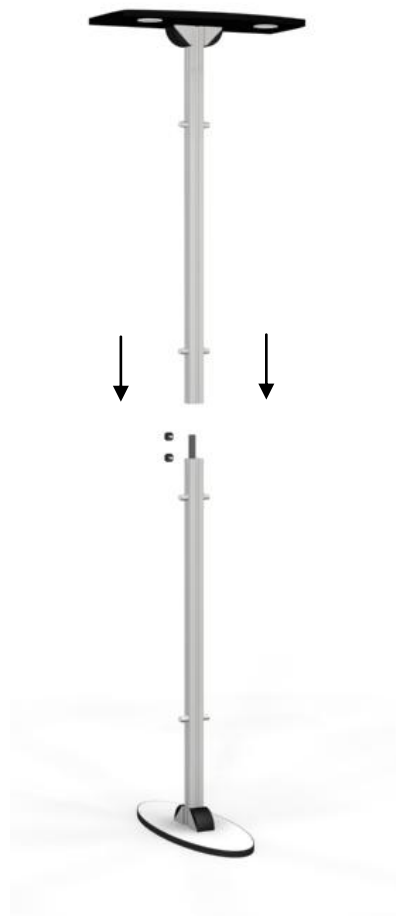
Gusset Cap



Short Knob



Step 2: Connect the upper column to the lower column
using (2) **Short Knobs**



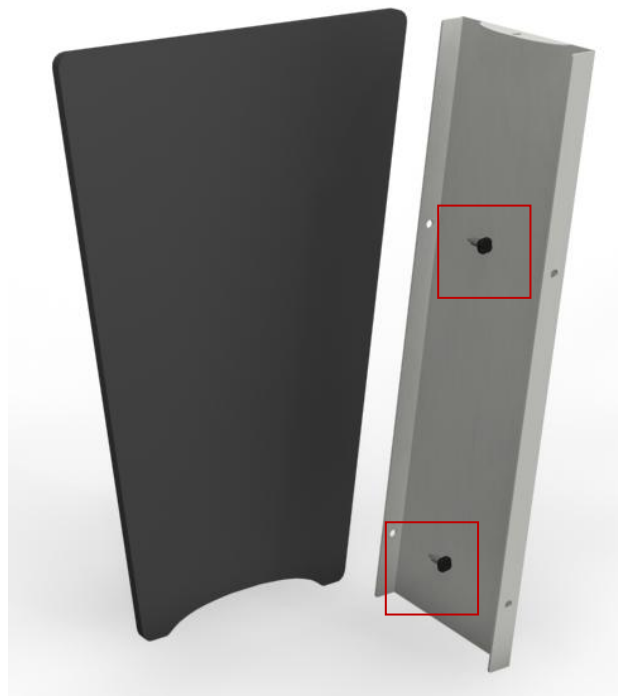
Short Knob



Step 3: Attach the wings to the columns using **Gripper Knobs**



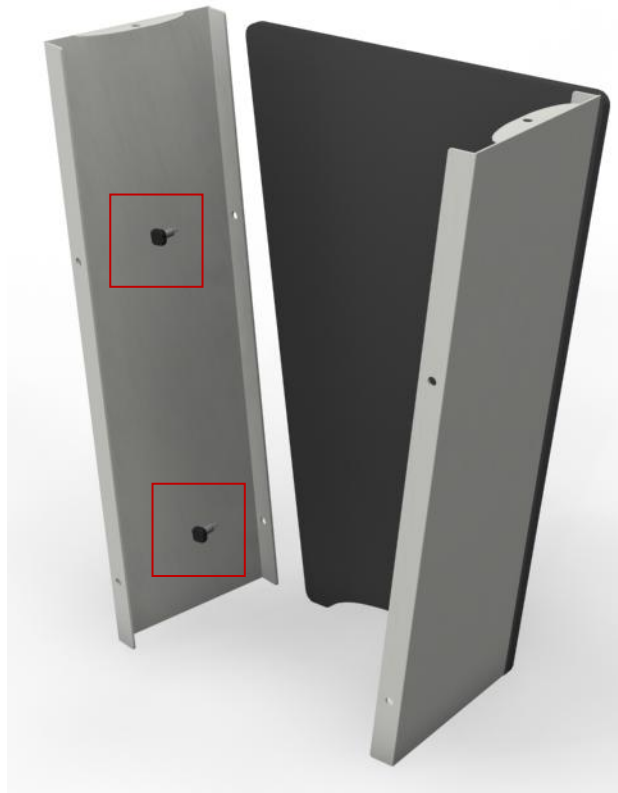
Step 4: Begin assembling NLC counter; Attach the front and side panels using (2) **Long Knobs**



Long Knob



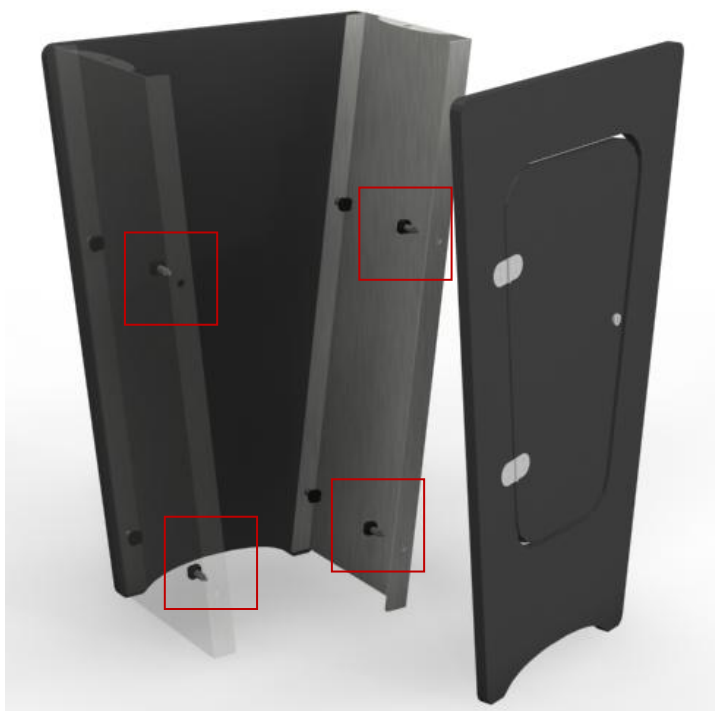
Step 5: Attach the other side panel with (2) **Long Knobs**



Long Knob



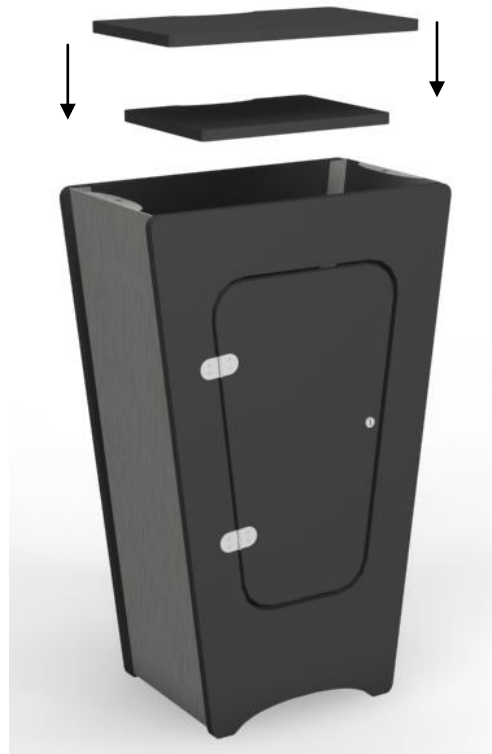
Step 6: Reaching through the opening on top; Connect the door panel with (4) **Long Knobs**



Long Knob



Step 7: Lower the shelves into position



Step 8: Reaching through the door; Lower the counter top into position and secure with (2) Long Knobs



Long Knob



Step 9: Place the NLC counter into position



Finished

