

# ORIGAMI SEG TRUSS



Introducing the Origami Truss System – where innovation meets elegance. This cutting-edge 6in x 6in folding truss redefines the dynamics of display systems, offering a portable and sophisticated solution that outshines traditional truss systems in every aspect.

## Key Features:

### Portable Origami Design:

Unleash the power of portability with our Origami Truss System. Unlike conventional truss systems, this folding design ensures easy transportation and quick assembly without compromising on structural integrity.

### Stunning Silicone Edge Graphics (SEG):

Elevate your brand presence with vibrant and flawless Silicone Edge Graphics (SEG). Choose between single or double-sided displays that can be seamlessly integrated between the truss frame or fully wrapped around, ensuring your message captivates from all angles.

### Tailored Configurations:

Empower your brand with flexibility. Select from our library of standard configurations for a swift setup or let your creativity shine by designing a custom configuration that aligns perfectly with your unique brand identity and display requirements.

### Comprehensive Accessories:

Illuminate your brand with a range of accessories crafted for both functionality and visual allure. Enhance your presentation with monitor mounts for interactive experiences, LED lights strategically positioned for front-lit graphics, shelving for product displays, slat walls for additional customization, and counters that invite engagement.

The Origami Truss System is more than a display solution; it's a canvas for your brand story. Whether you're an industry veteran or a newcomer, make a lasting impression with a truss system that seamlessly blends innovation, portability, and customization. Elevate your brand presence with Origami – because your brand deserves a display as unique as its story.

# OVERVIEW



Truss Folded



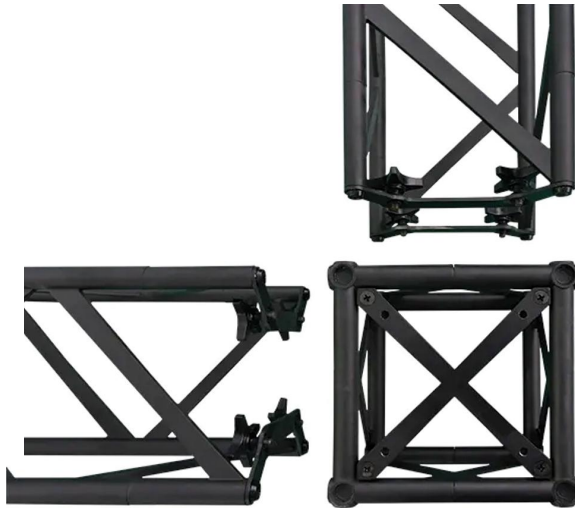
Top View

- Updated version of our Origami Truss System now featuring SEG graphics (previous version had pole pocket graphics)
- The truss folds for storage and transport and opens up to 15cm x 15cm (6in x 6in)
- Collapsed/folded height: 6cm/2.4in
- The Origami Truss profiles have an iron frame with a durable black plastic coating
- Tool free frame assembly with the use of screw knobs that are attached to the end of each truss profile (4 screw knobs on each end)
- Available in 6 standard Truss lengths. Truss lengths cannot be customized
  - SKU: TRUSS-30CM (30cm/11.8in)
  - SKU: TRUSS-60CM (60cm/23.6in)
  - SKU: TRUSS-90CM (90cm/35.4in)
  - SKU: TRUSS-120CM (120cm/47.2in)
  - SKU: TRUSS-150CM (150cm/59in)
- Displays Dye Sublimated Silicone Edge Graphics (SEG) with multiple options for graphic display (See slides 12-15)
- The SEG graphic profiles allows the Origami Truss frame to be visible or fully covered with fabric graphics depending on how they are installed
- Available in standard and custom configurations
- Can be purchased as Graphic Package, Hardware Only, or Graphic Only
- Various accessories are available (See slides 5 & 6)
- Origami Truss and accessories are only available in black
- Truss profiles and cube/flat connectors are compatible with the original Origami Truss

# TRUSS ASSEMBLY CUBE CONNECTOR



Truss Cube Connector  
SKU: TRUSS-CUBE



- The Origami Truss Cube Connector allows you to connect Truss profiles to make corners as well as 3-D configurations
- SKU: TRUSS-CUBE
- Cube Dimensions: 15cm x 15cm x 15cm (6in x 6in x 6in)
- All 6 sides of the cube connector are threaded and can receive the threaded screw knobs that are attached to each truss profile. Each side has 4 threaded holes that match up with the screw knobs on the truss.
- Cube connectors are compatible with all length Origami Truss profiles
- Cube connectors are included with the small and large truss feet. The feet will not work without the cube connectors.
- TRUSS-SEG-S-CUBE is the cube connector specific SEG channel. This allows graphics to cover the cube connector.
- Cube connector cannot attach directly to flat connector



# TRUSS ASSEMBLY FLAT CONNECTOR

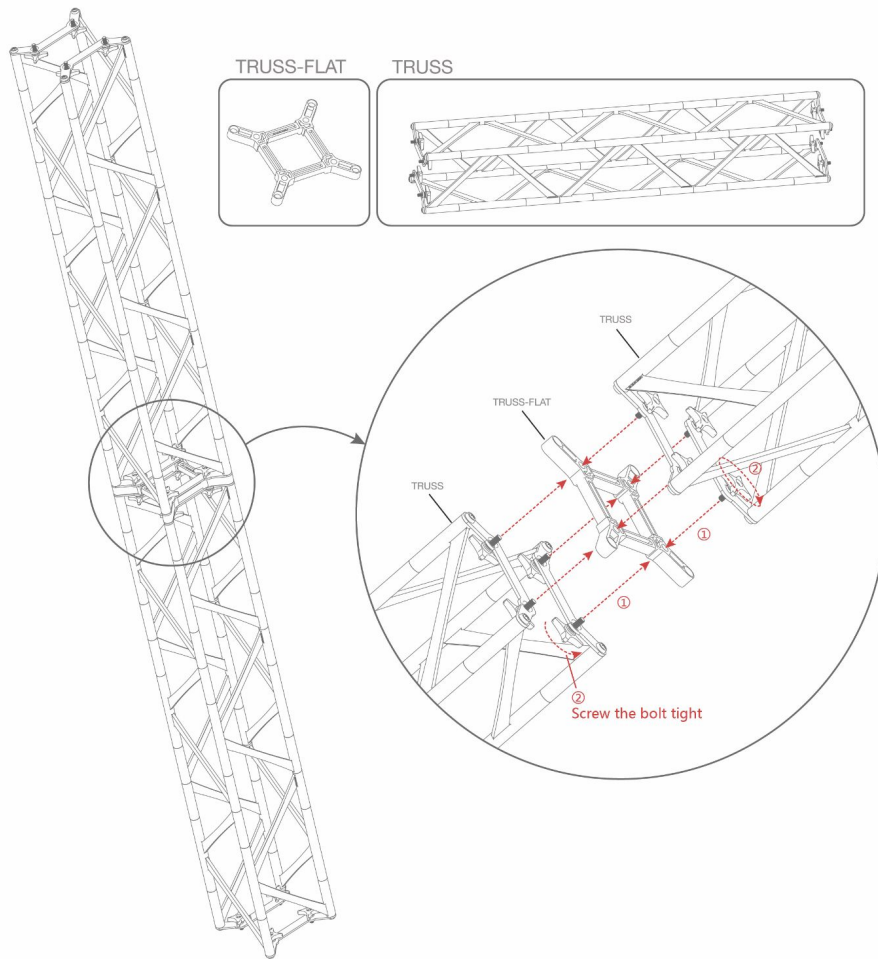


Truss Flat Connector  
SKU: TRUSS-FLAT  
Dims: 15cm x 15cm x 2cm



- The Origami Truss Flat Connector allows you to connect 2 Truss profiles in line to make 1 long section of truss
- SKU: TRUSS-FLAT
- Cube Dimensions: 15cm x 15cm x 2cm (6in x 6in x .8in)
- Both sides of the flat connector are threaded and can receive the threaded screw knobs that are attached to each truss profile. Each side has 4 threaded holes that match up with the screw knobs on the truss.
- Flat connectors are compatible with all length Origami Truss profiles
- Only 1 flat connector is needed per connection (flat connectors cannot be stacked)
- Flat connector cannot attach directly to a cube connector

# TRUSS ASSEMBLY FLAT CONNECTOR



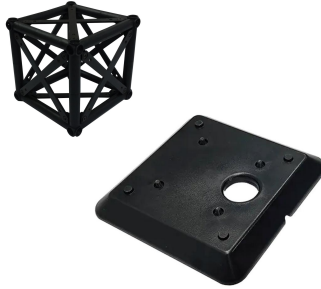
# ACCESSORIES



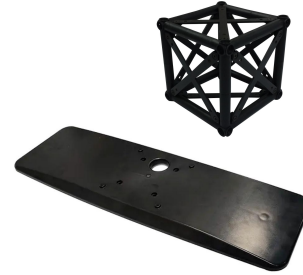
Truss Cube Connector  
SKU: TRUSS-CUBE  
Dims: 15cm x 15cm x 15cm



Truss Flat Connector  
SKU: TRUSS-FLAT  
Dims: 15cm x 15cm x 2cm



Truss Foot Small  
SKU: TRUSS-FT-S  
Dims: 20.9cm x 20.9cm  
Includes cube connector  
to attach to Truss profile

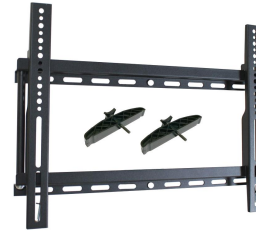
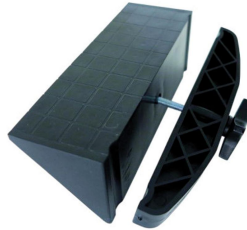


Truss Foot Large  
SKU: TRUSS-FT-L  
Dims: 65cm x 21cm  
Includes cube connector  
to attach to Truss profile



Truss LED Light  
SKU: TRUSS-LIGHT  
25W, 110-240V LED Light

# ACCESSORIES



Truss Light Bracket

SKU: TRUSS-LAMP-BASE

Compatible with all  
standard trade show arm  
lights

Truss Lightbox Connector

SKU: TRUSS-LB-CON

Use: Connector to add Lightboxes  
to Truss configuration. Not Compatible  
with OC Lightbox or SEGO displays

Truss MDF Shelf Connector

SKU: TRUSS-MDF-CON

Use: Support for MDF shelf  
Counter Weight Limit: 55lbs Max

Truss Monitor Bracket

SKU: TRUSS-MM

Size Limit: 32" - 55"  
Weight Limit: 55lbs Max

Truss Slatwall/Shelves

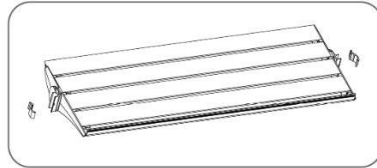
SKU: TRUSS-SLAT

Dims: 65cm x 21cm  
Weight Limit: 39lbs  
Compatible with standard  
slatwall accessories

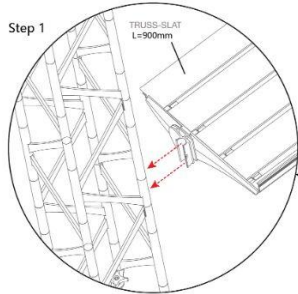


# TRUSS-SLAT

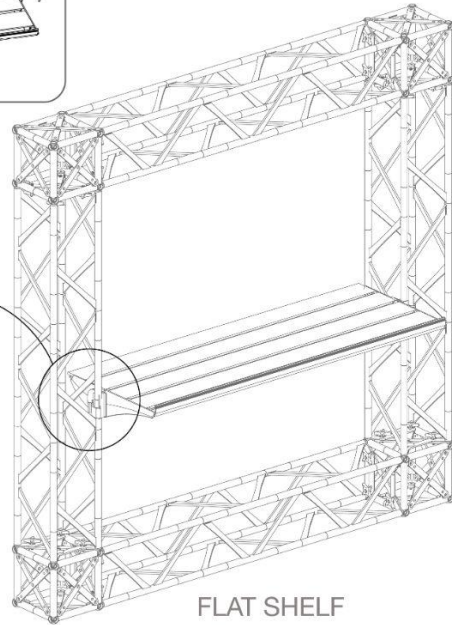
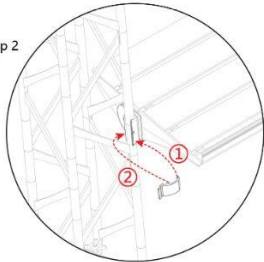
## TRUSS-SLAT



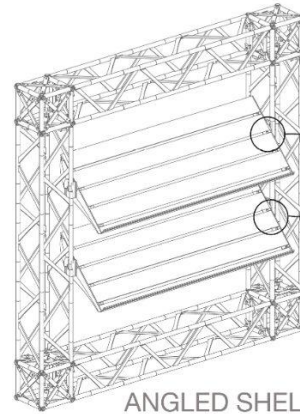
Step 1



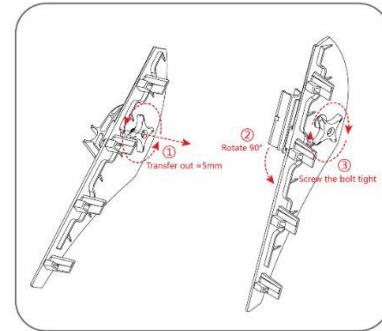
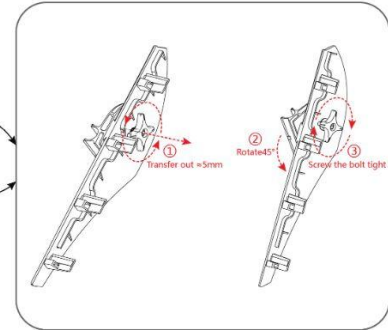
Step 2



FLAT SHELF

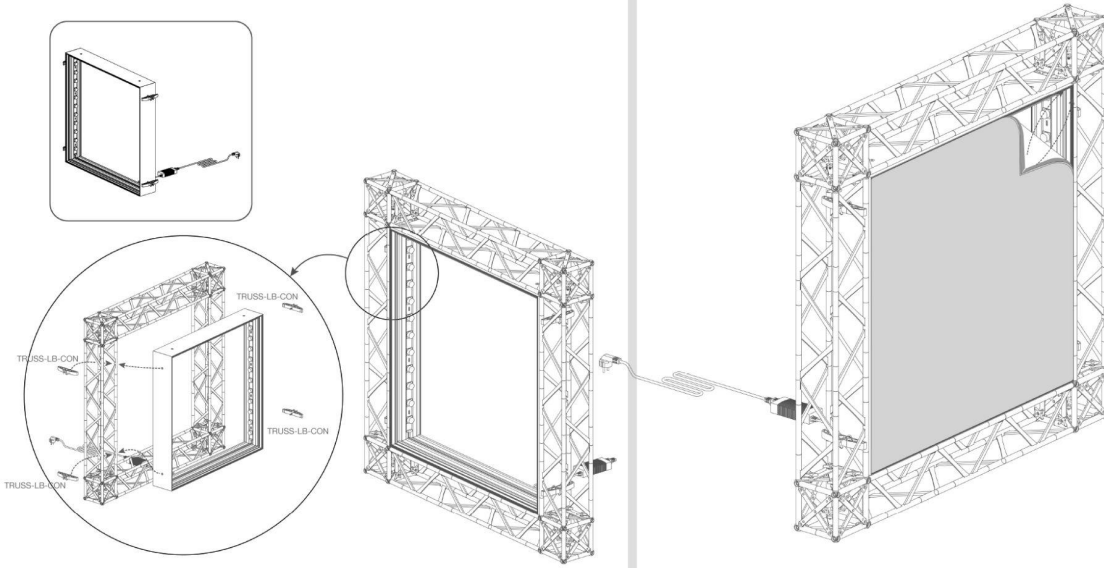


ANGLED SHELF



SLATWALL

# LIGHTBOXES



- The Origami Truss Lightbox Connector allows you to attach a Resort Extrusion Lightbox to the inside of an Origami Truss frame
- Compatible with our VAIL-120DB lightbox profiles only (not compatible with SEGO or One Choice Lightbox frames)
- Lightboxes feature LED edge lights (SKU: RESORT-LS)
- Displays single or double sided SEG graphics printed on dye sub backlit material
  - Single sided graphics have blackout on backside
- Lightbox frames include all necessary tools for assembly (SKU: ALLEN-4mm)



Truss Lightbox Connector  
SKU: TRUSS-LB-CON



VAIL-120DB Profile  
SKU: VAIL-120DB



LED Edge Lights  
SKU: RESORT-LS

## LED Specifications

Power	10 W per strip (2W per LED)
Input Voltage	DC24±0.5V
Color Temperature	6000-7000k
Angle	9°*50°/15°*60°
Certifications	ETL & CE Certifications
Lamp Type	CREE

# SEG CHANNELS

We have a variety of SEG chanel options for the Origami Truss and have all of our options listed below.

SEG Channels are cut to length to match the Truss profile lengths. They can also be added to the cube connectors depending on how you want to display your graphics. All SEG channels accept 12mm x 3mm keder



Truss SEG Channel Single  
SKU: **TRUSS-SEG-S**

Profile Length: 3m - These are cut to size to match length of the Truss piece

Use: Standard SEG channel for displaying single sided graphics on Origami Truss profiles

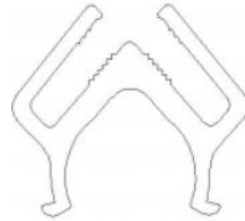


Truss SEG Channel Single  
Cube

SKUS: **TRUSS-SEG-S-CUBE-129mm** and **TRUSS-SEG-S-CUBE-150mm**

Profile Length: 129mm or 150mm. These are pre cut to fit the different sides of the Cube Connectors. Lengths vary due to Truss patterns

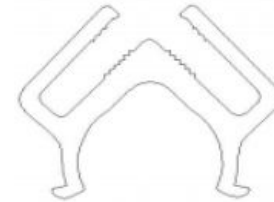
Use: Standard SEG channel for displaying single sided graphics on Origami Truss Cube Connectors



Truss SEG Channel Double  
90° Straight  
SKU: **TRUSS-SEG-D-90**

Profile Length: 3m - These are cut to size to match length of the Truss piece

Use: SEG channel for inner 90° corners



Truss SEG Channel Double 90°  
Corner  
SKU: **TRUSS-SEG-D-90-CRNR**

Profile Length: 152mm. These are pre cut to fit the sides of the Cube Connectors.

Use: SEG channel for 90° corners on Cube Connectors



Truss SEG Channel Double  
180° Straight  
SKU: **TRUSS-SEG-D-180**

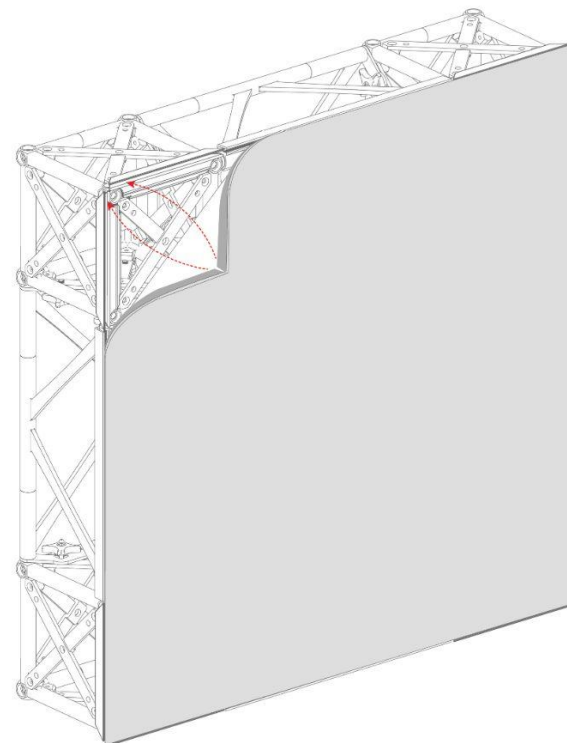
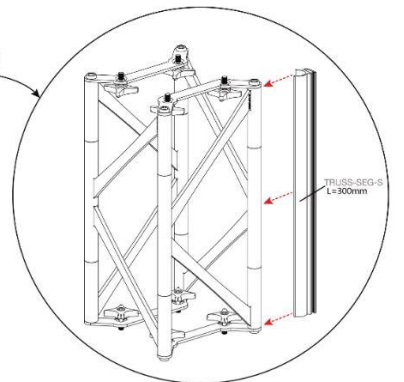
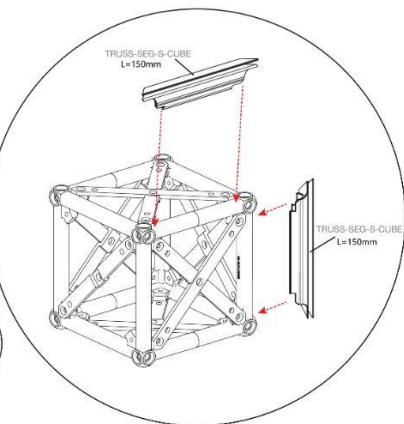
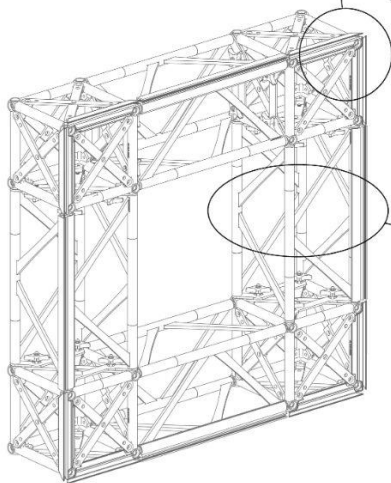
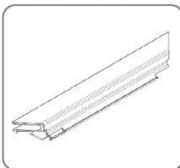
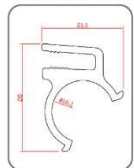
Profile Length: 3m - These are cut to size to match length of the Truss piece

Use: Double SEG channel for displaying graphics side by side to stacked

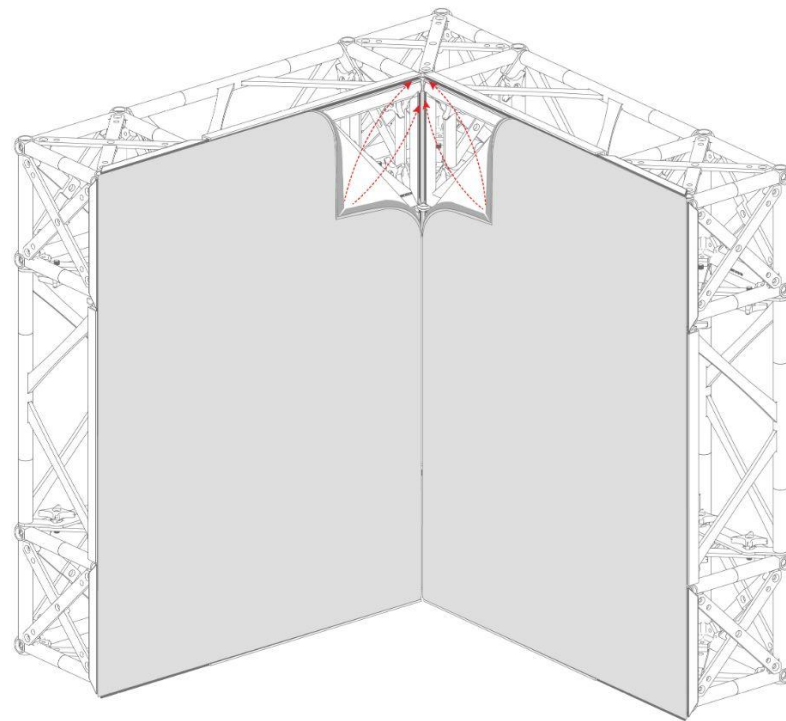
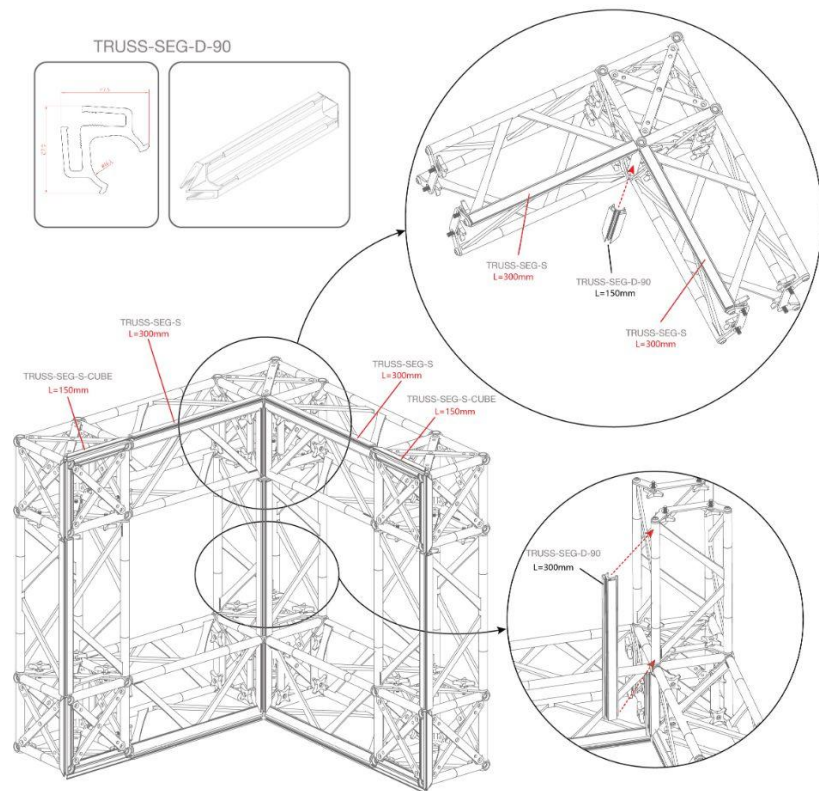
# TRUSS-SEG-S & TRUSS-SEG-S-CUBE

TRUSS-SEG-S

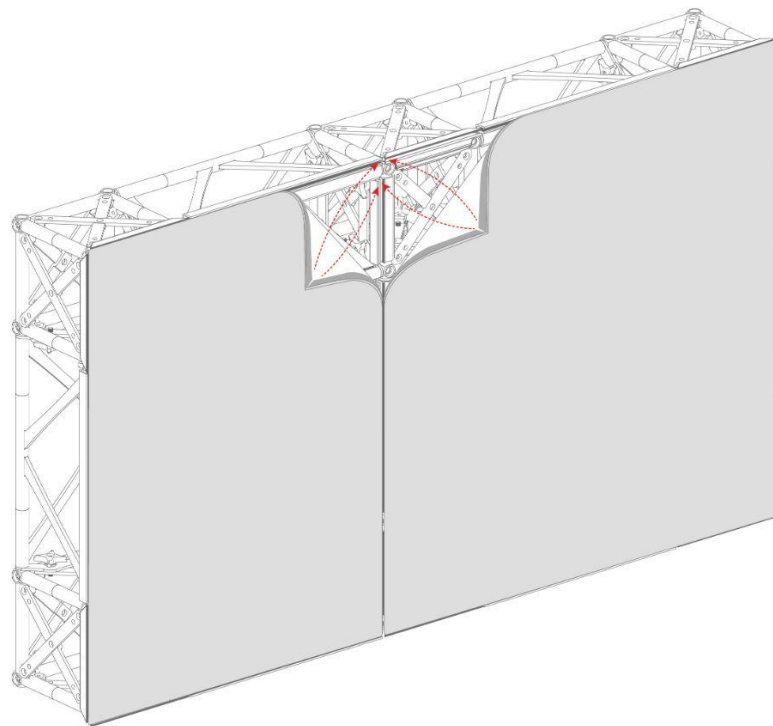
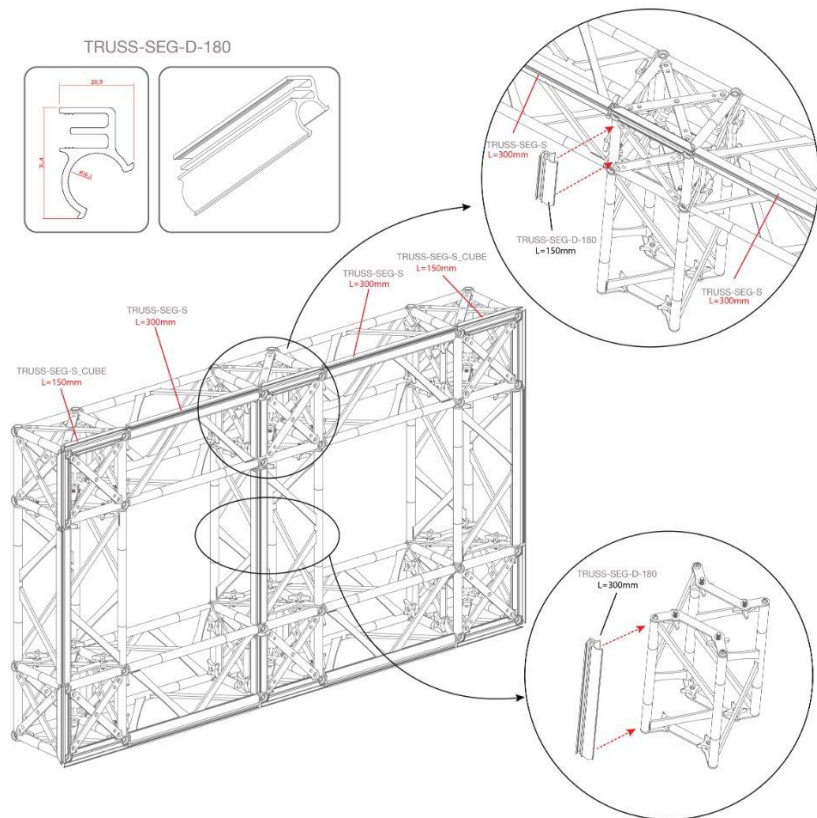
TRUSS-SEG-S-CUBE



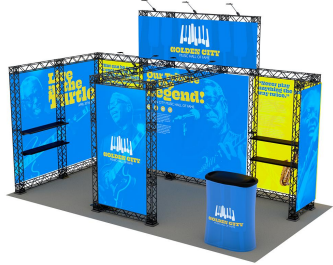
# TRUSS-SEG-D-90 & TRUSS-SEG-D-90-CRNR



# TRUSS-SEG-D-180



# CONFIGURATIONS

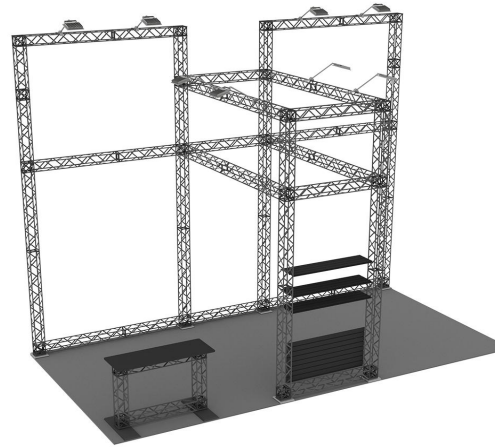


- We are launching with 6 standard configurations for the following trade show booth sizes\*:
  - 20ft x 10ft
  - 20ft x 20ft
  - 30ft x 20ft
- “Inline” and “Island” have been added to the product names as suggestions to what type of trade show booths these can be utilized in
- Please check your tradeshow guidelines to make sure the configurations conform to the show regulations.
- The sizing listed in the product SKUs refer to booth size and not the actual dimensions of the configuration. Please see product page and spec sheet for actual display dimensions
- Standard configurations can be customized/modified
- Fully custom configurations are also available

# ORIGAMI2010-A

## Key Features

- Designed to fit in a 20ft x 10ft booth space, but works great as a divider in a 20ft x 20ft or larger booth space. The opening in the middle makes a great pathway between both sides of a larger booth.
- Please check your trade show guidelines to make sure this configuration conforms to the show regulations.
- Includes (qty 1) Origami Truss Counter
- Includes (qty 8) LED Front Lights (SKU: TRUSS-LIGHT)
- Includes (qty 4) TRUSS-SLAT which can be used as shelving or slat walls. These are mounted to the backside of the front bridge support
- Large walls feature double sided graphic display, while the header and front bridge support display single sided graphics
- Showsite labor recommended for set up



Top View



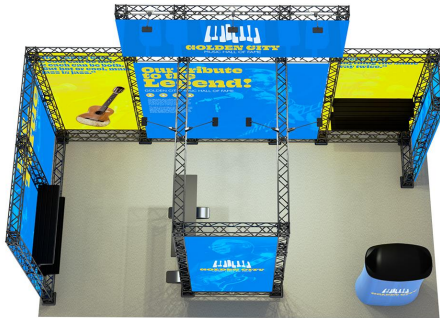
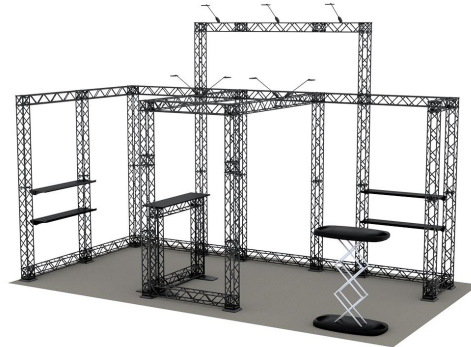
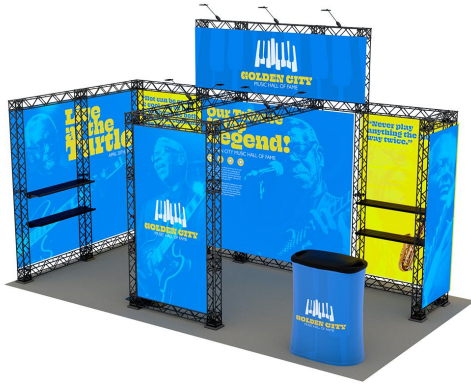
Back View



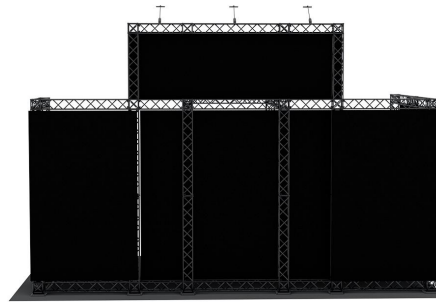
# ORIGAMI2010-B

## Key Features

- Designed to fit in a 20ft x 10ft booth space. Please check your trade show guidelines to make sure this configuration conforms to the show regulations.
- Includes (qty 1) Gopher Pop Up Counter (SKU: GPOP)
- Includes (qty 1) Origami Truss Counter
- Includes (qty 10) LED Front Lights (SKU: TRUSS-LIGHT)
- Includes (qty 4) TRUSS-SLAT which can be used as shelving or slat walls
- Includes (qty 1) Lightbox frame. Mounted to front bridge support frame
- Single sided graphic display. Back of display shows the black backing of the fabric.
- Ladder recommended for setup



Top View

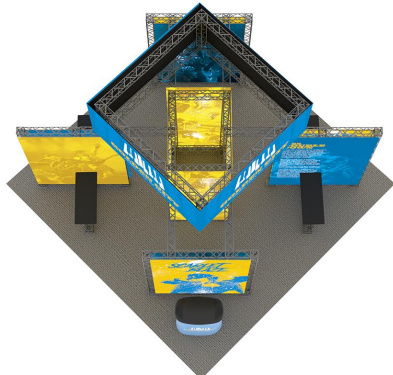
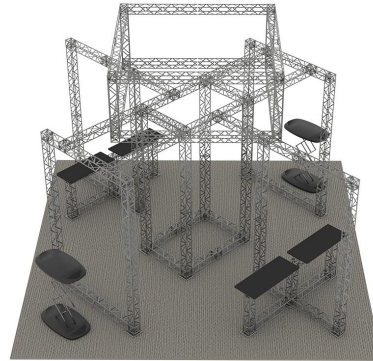


Back View

# ORIGAMI2020-C

## Key Features

- Designed to fit in a 20ft x 20ft booth space. Please check your trade show guidelines to make sure this configuration conforms to the show regulations.
- Includes (qty 2) Gopher Pop Up Counter (SKU: GPOP)
- Includes (qty 4) Origami Truss Counter
- Includes (qty 2) Lightbox frames. Mounted to the backside of the bridge support frames
- Great layout for 20ft x 20ft island booth that allows for great traffic flow
- Center area can be used for storage
- Double sided graphic display
- Showsite labor recommended for set up



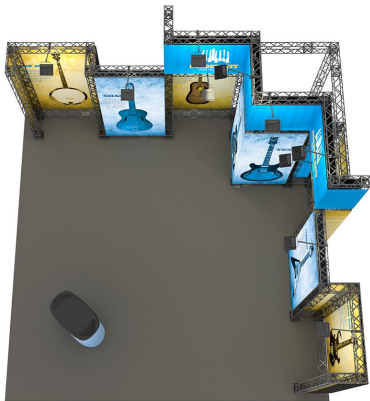
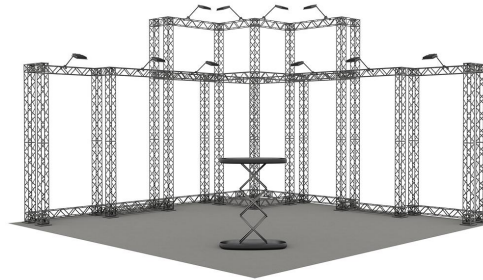
Top View



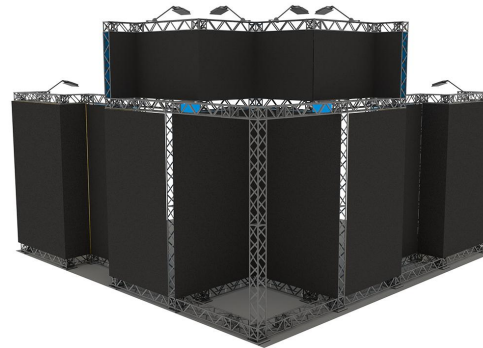
# ORIGAMI2020-D

## Key Features

- Designed to fit in a 20ft x 20ft booth space. Please check your trade show guidelines to make sure this configuration conforms to the show regulations.
- Includes (qty 1) Gopher Pop Up Counter (SKU: GPOP)
- Includes (qty 10) LED Front Lights (SKU: TRUSS-LIGHT)
- Great open booth layout for 20ft x 20ft island booth
- Single sided graphic display. Back of display shows the black backing of the fabric.
- Tall ladder recommended for setup



Top View

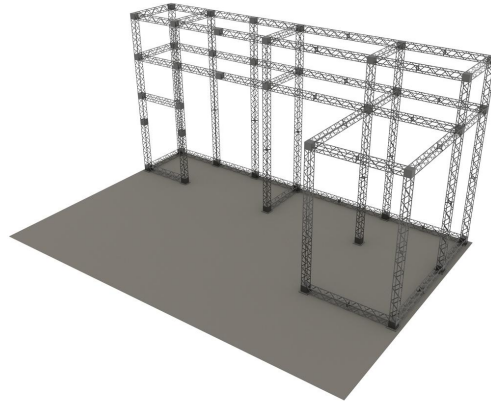
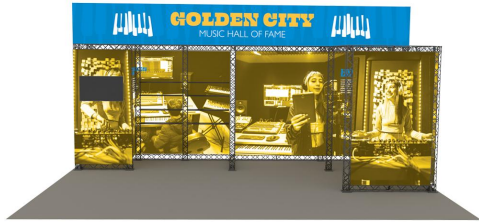


Back View

# ORIGAMI3020-E

## Key Features

- Designed to fit in a 30ft x 20ft booth space. Please check your trade show guidelines to make sure this configuration conforms to the show regulations.
- Includes (qty 4) TRUSS-SLAT which can be used as shelving or slat walls
- Includes (qty 1) Monitor Mount (SKU: TRUSS-MM)
- Includes (qty 1) Lightbox frame
- Includes (qty 8) LED Front Lights (SKU: TRUSS-LIGHT)
- Has conference room area for meeting
- Great open booth layout for 20ft x 20ft island booth
- Single sided graphic display. Back of display shows the black backing of the fabric.
- Tall ladder or showsite labor recommended for setup

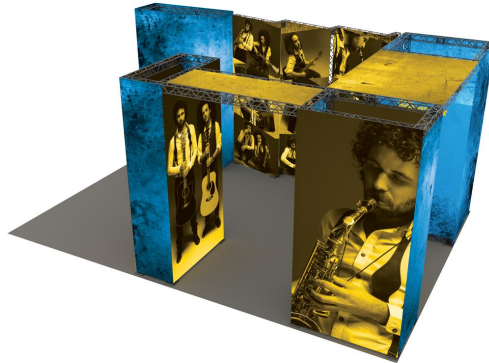
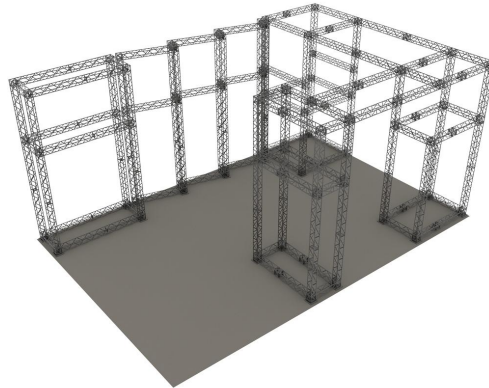


# ORIGAMI3020-F

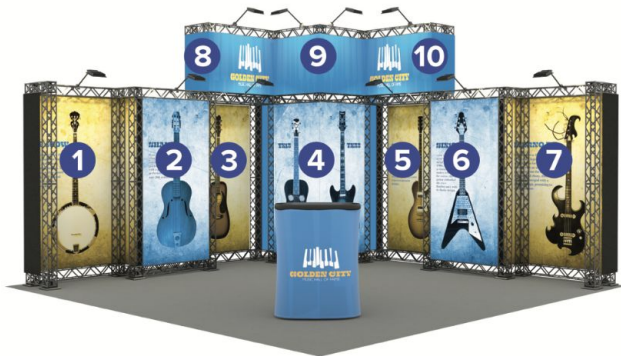
## Key Features

- Designed to fit in a 30ft x 20ft booth space. Please check your trade show guidelines to make sure this configuration conforms to the show regulations.
- Includes (qty 1) Monitor Mount (SKU: TRUSS-MM)
- Includes (qty 11) LED Front Lights (SKU: TRUSS-LIGHT)
- Has 4 rooms that can be used for storage
- Great open booth layout for 30ft x 20ft island booth
- Single sided graphic display. Back of display shows the black backing of the fabric.
- Showsite labor recommended for set up

Top View



## TEMPLATE & GRAPHIC INSTALL GUIDE



1. REVERSE MOUNT (INCLUDES ATTACHED END CAPS)
2. FRONT MOUNT
3. FRONT MOUNT
4. FRONT MOUNT (CORNER & COVERS BOTH FRAMES)
5. REVERSE MOUNT
6. FRONT MOUNT
7. REVERSE MOUNT (INCLUDES ATTACHED END CAPS)
8. FRONT MOUNT (CORNER & COVERS BOTH FRAMES)
9. FRONT MOUNT (CORNER & COVERS BOTH FRAMES)
10. FRONT MOUNT (CORNER & COVERS BOTH FRAMES)



OVERHEAD VIEW LISTS BOTTOM LEVEL FRAMES ONLY

FRONT MOUNT: GRAPHIC INSTALLS ON FRONT OF FRAME

REVERSE MOUNT: GRAPHIC INSTALLS ON BACKSIDE OF FRAME W/GRAPHIC FACING FORWARD

NUMBERS ON THE IMAGE ABOVE INDICATE THE TEMPLATE LOCATION # ON FRAME  
 PLEASE ADD TEMPLATE LOCATION # TO END OF FILENAME. EX: "ORIGAMI2020-D-1"

# TEMPLATES

- Each standard Origami Truss configuration includes a template guide that outlines which template goes where in the configuration and any special notes regarding that panel/template
- There are also notes in regards to the orientation of the graphics since they can be mounted 2 different ways
  - Front Mount: Graphic installs on the front of the frame (Like standard SEG graphics)
  - Reverse Mount: Graphic installs on the back of the frame with the graphic facing forward
- At the bottom of the template guides there are notes on how to name your files so our Graphics and Production teams know which graphic corresponds to which template/location on the configuration
- Origami Truss graphics are manually proofed and not a quick proof product

# LOAD BEARING

**\*NOTE:** All load bearing info listed is with weight hanging from the middle of the frame using horizontal TRUSS-120CM profiles

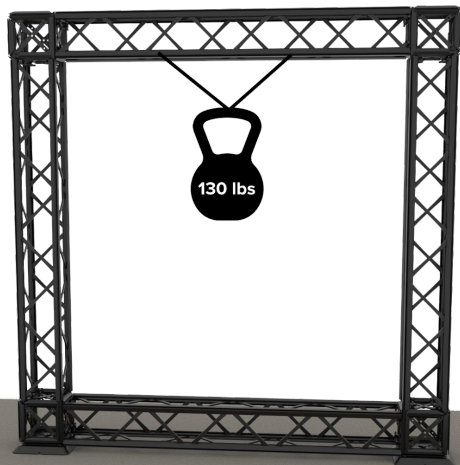


Figure A: 130 lbs max weight on single TRUSS-120CM

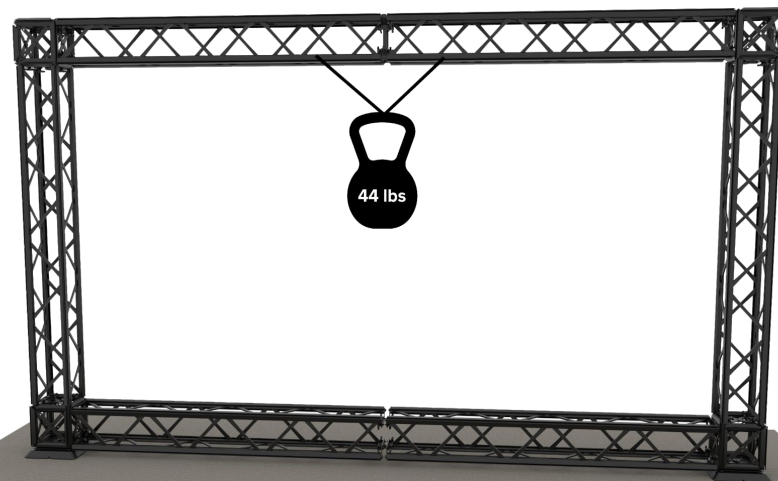


Figure B: 44 lbs max weight with (2) TRUSS-120CM with a TRUSS-FLAT connector

# GRAPHIC INFO



## Black & White Fabric - OC

Thickness	Printing Process	Finishing	Maximum Media Width
7.67 oz	Dye Sublimation Paper Transfer	Soft Look Bright Colors	126"

Non-Backlit Applications



## Dye Sub Backlit - OC

Thickness	Printing Process	Finishing	Maximum Media Width
5.25 oz	Dye Sublimation Paper Transfer	Soft Look Bright Colors	117"

Backlit Applications

- **Material (Non-Backlit):** Black & White Fabric
- **Material (Backlit):** Dye Sub Backlit Fabric (for configurations with lightboxes)
- **Print Process:**
  - Non Backlit: Paper Transfer Dye Sublimation
  - Backlit: Direct to Fabric Dye Sublimation
- **Finishing:** 12mm x 3mm silicone beading is sewn around the perimeter of the fabric graphic with clear thread. Silicone beading is hidden from view once installed
- **Graphic Options:**
  - Single Sided Graphics
  - Double Sided Graphics
- **Production Time:** See website for current production times
- **Locations:** See website for current location offerings



# SHIPPING & WARRANTY

## Shipping

- Contact us for shipping options

## Warranty

- 1 year warranty on graphics
- Lifetime warranty on hardware

## Returns

- RMA's will be shipped back to CA or PA

