

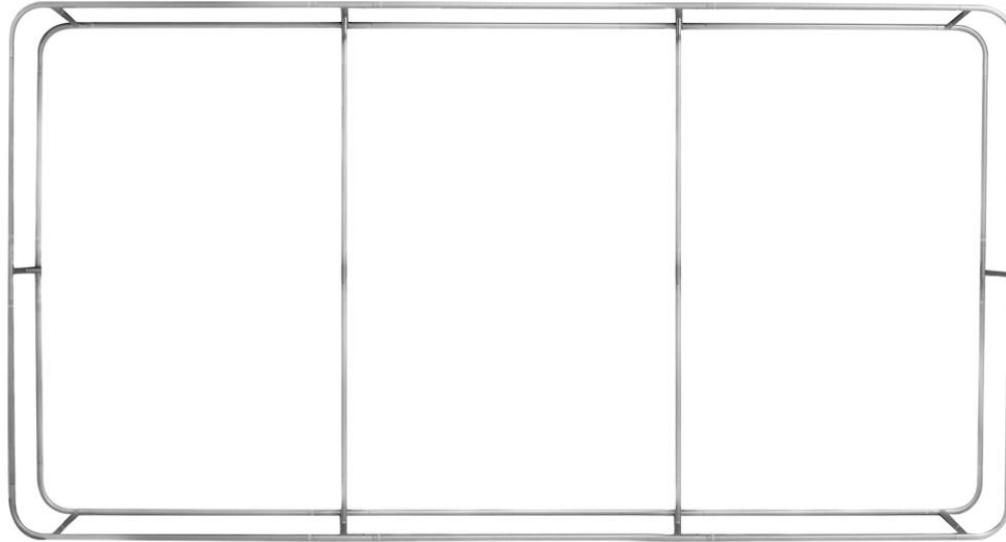
WALLBOX



Introducing the new Wallbox Fabric Display, a portable unlike anything you've ever seen. Your exhibitors will be in awe of its mighty size! You might need a friend to help you set it up, but don't let this giant dissuade you it's completely toolless! Using the same framework as our line of Skybox Hanging Banners, set up is a snap! With push button snap locks, the tubes connect together without the need for tools. Custom dye sublimated fabric graphics fully wrap the entire frame. We offer two graphic options for the wallbox. Double sided graphic option includes dye sub printed front panel, back panel, and end caps, with plain black fabric on the top and bottom. Single sided graphic option includes dye sub printed front panel and end caps with your choice of blank white or black fabric for the backside, and plain black fabric on the top and bottom. The graphic is finished pillowcase style with a zipper at the bottom for easy installation and a clean finished look. A travel bag is included to transport and store your display in between events.

OVERVIEW

- This is the new version of the Wallbox. All frames are made in house at our PFC location.,
- Hardware components from new version are not compatible with previous/discontinued version
- Graphic dimensions have remained the same so graphics are cross compatible
- 30mm aluminum tubing with plastic connectors
- Tool free frame assembly via push button connection
- Includes travel bag
- Available in 4 standard widths: 8ft, 10ft, 15ft, and 20ft
- Available in 2 standard heights: 8ft and 10ft
- Custom sizing is available
- Displays dye sublimated stretch fabric graphics with pillowcase style finishing
- Single and double sided graphic options available.
- Available as Graphic Package, Graphic Only, and Hardware only



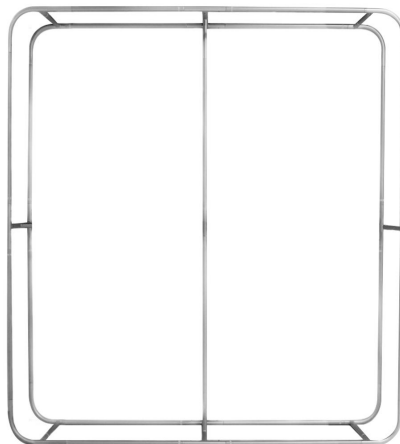
Tube Connection



Press button & insert swaged end into receiving end of tubing



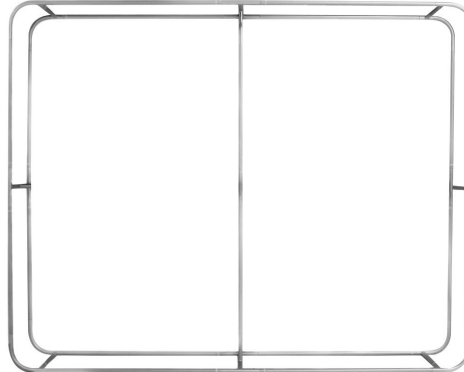
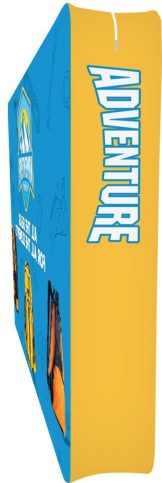
Plastic Connector for Union Tubes



8FT

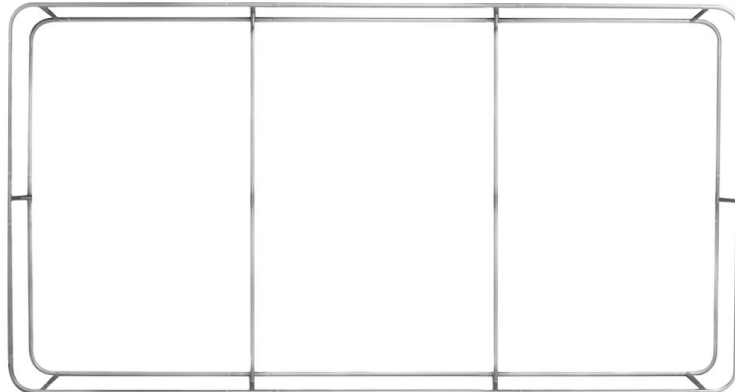
- **2 Standard sizes available:**
 - 8ft W x 8ft H
 - 8ft W x 10ft H
- **SKUs:**
 - WB-8X10-G1-B
 - WB-8X10-G1-W
 - WB-8X10-G2
 - WB-8X10-GO1-B
 - WB-8X10-GO1-W
 - WB-8X10-GO2
 - WB-8X10-HO
 - WB-8X8-G1-B
 - WB-8X8-G1-W
 - WB-8X8-G2
 - WB-8X8-GO1-B
 - WB-8X8-GO1-W
 - WB-8X8-GO2
 - WB-8X8-HO
- 1 Center Vertical Support Strut
- Includes Travel Bag

10FT



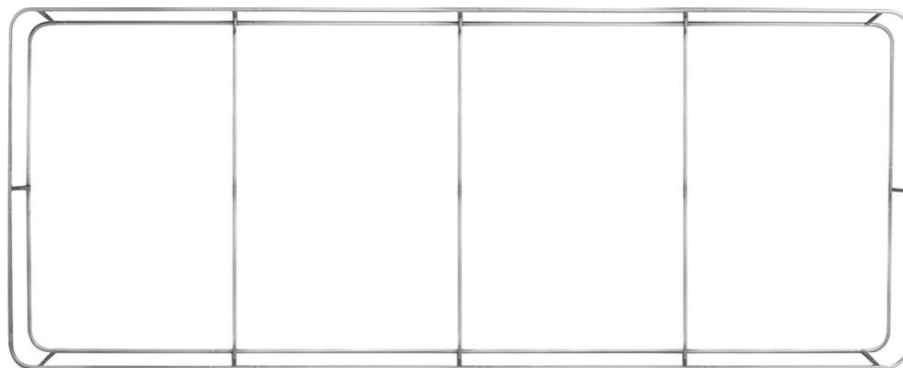
- **2 Standard sizes available:**
 - 10ft W x 8ft H
 - 10ft W x 10ft H
- **SKUs:**
 - WB-10X10-G1-B
 - WB-10X10-G1-W
 - WB-10X10-G2
 - WB-10X10-GO1-B
 - WB-10X10-GO1-W
 - WB-10X10-GO2
 - WB-10X10-HO
 - WB-10X8-G1-B
 - WB-10X8-G1-W
 - WB-10X8-G2
 - WB-10X8-GO1-B
 - WB-10X8-GO1-W
 - WB-10X8-GO2
 - WB-10X8-HO
- 1 Center Vertical Support Strut
- Includes Travel Bag

15FT



- **2 Standard sizes available:**
 - 15ft W x 8ft H
 - 15ft W x 10ft H
- **SKUs**
 - WB-15X10-G1-B
 - WB-15X10-G1-W
 - WB-15X10-G2
 - WB-15X10-GO1-B
 - WB-15X10-GO1-W
 - WB-15X10-GO2
 - WB-15X10-HO
 - WB-15X8-G1-B
 - WB-15X8-G1-W
 - WB-15X8-G2
 - WB-15X8-GO1-B
 - WB-15X8-GO1-W
 - WB-15X8-GO2
 - WB-15X8-HO
 - 2 Vertical Support Struts
 - Includes Travel Bag





20FT

- **2 Standard sizes available:**
 - 20ft W x 8ft H
 - 20ft W x 10ft H
- **SKUs**
 - WB-20X10-G1-B
 - WB-20X10-G1-W
 - WB-20X10-G2
 - WB-20X10-GO1-B
 - WB-20X10-GO1-W
 - WB-20X10-GO2
 - WB-20X10-HO
 - WB-20X8-G1-B
 - WB-20X8-G1-W
 - WB-20X8-G2
 - WB-20X8-GO1-B
 - WB-20X8-GO1-W
 - WB-20X8-GO2
 - WB-20X8-HO
 - 2 Vertical Support Struts
 - Includes Travel Bag



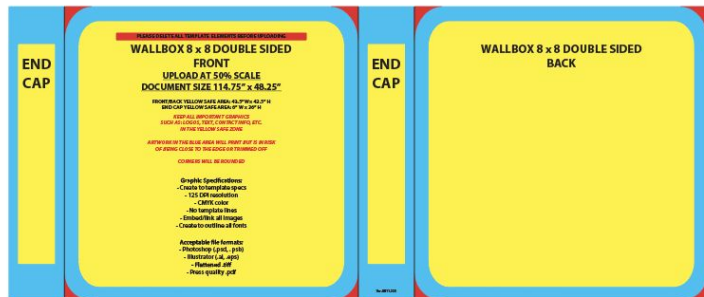
HARDWARE DETAILS

- All Wallbox hardware is produced in house at our PFC location
- We are able to produce tube frames in house with 30mm and 34mm diameter tubing
- Our production process includes:
 - Tube cutting
 - 90° tube bending
 - Tube reducing/swaging (for tube connection)
 - Drilling/punching (for accessories and spring buttons)
 - Chamfering (cleaning up tube edges after cutting)
- Custom sizing and configurations are/will be available



TEMPLATES

- Separate templates for Single and Double Sided
- Front and back are on same artboard for double sided
- This is a Quick Proof product
- Make sure to check the scale % of templates since some are 50% and 25% due to document size limitations in illustrator.



GRAPHIC INFO

- **Material:** Stretch Fabric (FAB-STRETCH)
- **Print Process:** Paper Transfer Dye Sub
- **Finishing:** Pillowcase graphic finishing with #10 zipper closure at bottom. Top and bottom of the graphic is finished with stock black stretch fabric material.
- **Graphic Options:**
 - Single sided has printed front and end caps with your choice of blank white or black back panel.
 - Double sided has printed front, back and end cap panels.
- **Production Time:** See product page for current lead times.
- **Locations:** See product page for location availability



Stretch - OC

Thickness	Printing Process	Finishing	Maximum Media Width
8.08 oz	Dye Sublimation Paper Transfer	Soft Look Bright Colors	94"

SHIPPING & WARRANTY



Shipping

- Check Product Page for Location Availability per Option

Warranty

- 1 year warranty on graphics
- Lifetime warranty on hardware

Returns

- RMA's will be shipped back to CA or PA

Shipping Dimensions

- See Spec Sheets for Shipping Info