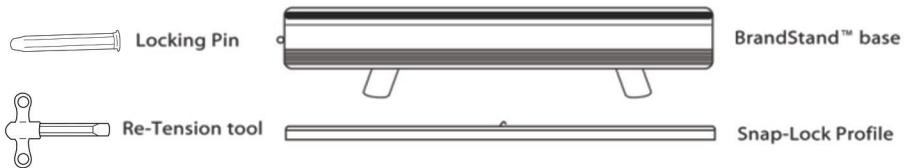


Graphic Installation

BrandStand 1 & 2™

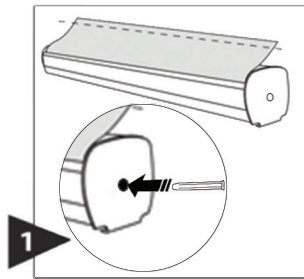


CAUTION:

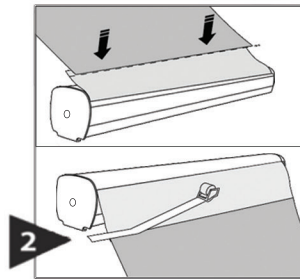
Do not remove the locking pin until the profile is attached to the graphic and the graphic is attached to the leader.

New Graphic Installation Instructions

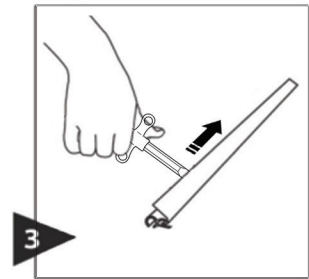
Please note leader needs to be held firmly for locking pin to be easily removed



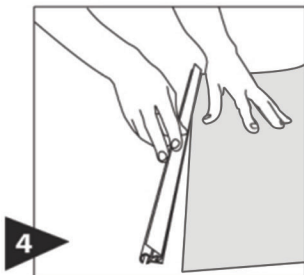
1 Pull graphic out until the leader is exposed. Insert locking pin to disable the roller.



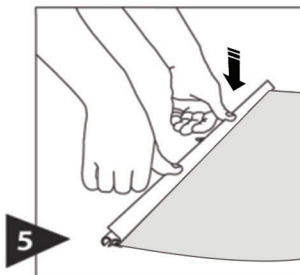
2 Remove graphic and attach new one. Place clear packaging tape over seam.



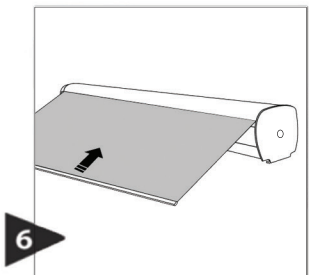
3 Remove endcaps off the profile bar. Use the edge of Re-Tension Tool to open the snap-lock profile.



4 Once the snap-lock profile is open, insert top portion of graphic into profile.

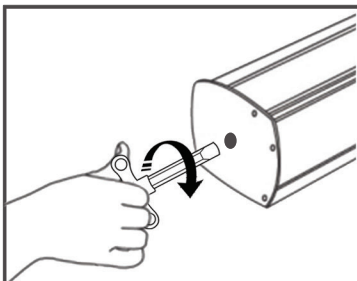


5 Apply even pressure to the snap-lock profile to lock graphic into place.



6 Grip image and unit securely and remove locking pin. Slowly guide image back into unit.

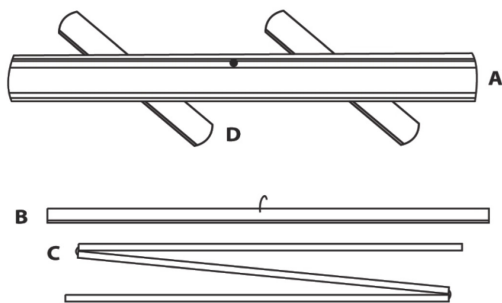
Re-Tensioning Instructions



Insert re-tension tool into the right side opening. Holding tool firmly, twist 33 full turns clockwise to re-tension.

Setup Instructions

BrandStand 1 & 2™

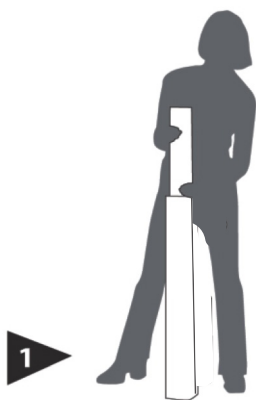


A - Display Base Unit

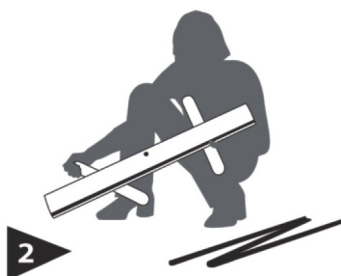
B - Snap-Lock Profile

C - Tri-Fold Pole

D - Stabilizing Feet



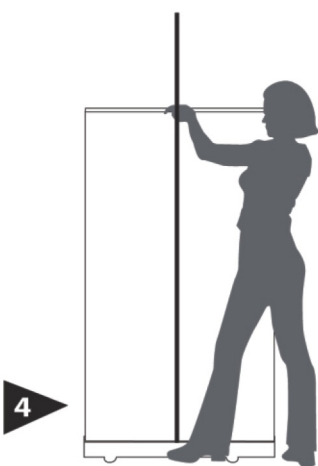
1
Remove the banner stand from the bag.



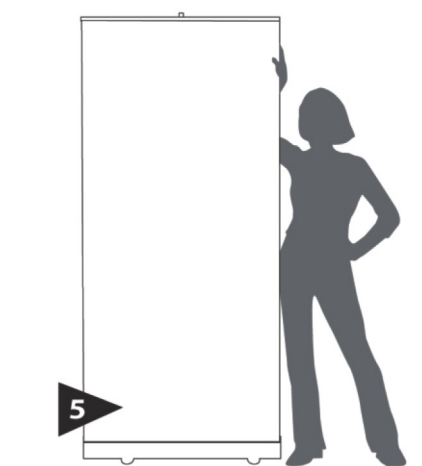
2
Turn stabilizing feet to 90° angle.



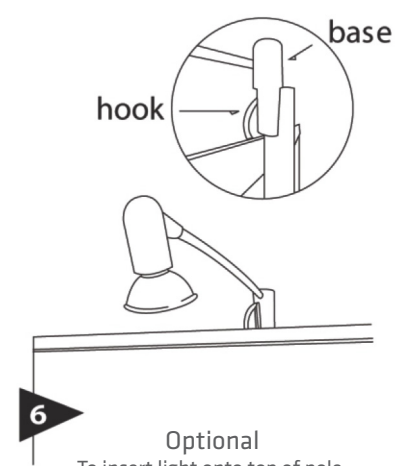
3
Assemble 3 piece pole and insert into hole located on the base.



4
Pull graphic out of base and fasten hook into top of pole.



5
Place display into position. To close, unfasten top hook and firmly grip while gently retracting.



6
Optional
To insert light onto top of pole, align profile hook through center groove of light base.