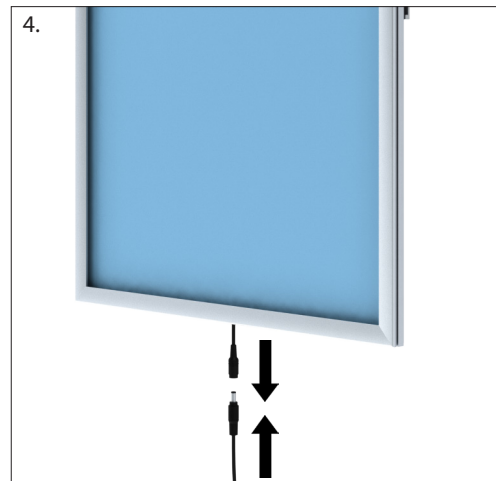
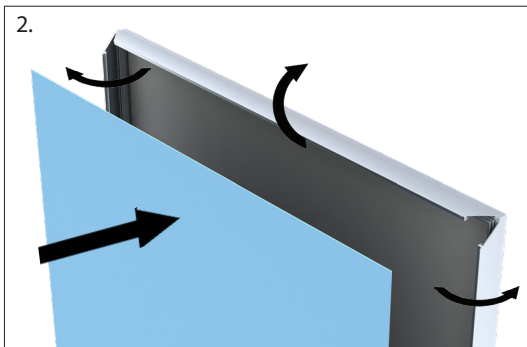
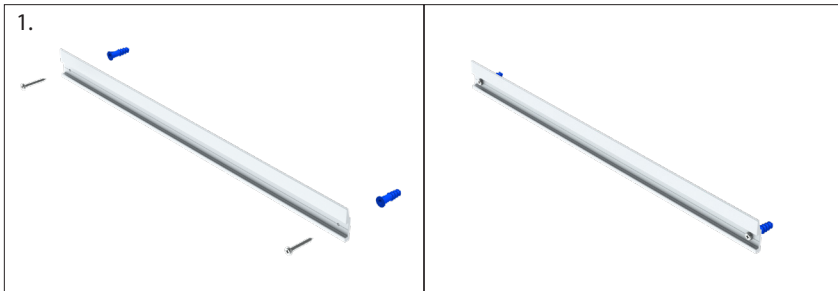


SupraSlim SnapFrame LED Light Box™ - SUL Series

Before beginning, read precautions on back of page

1. Mount the french cleat bracket(s) to the wall using screws and anchors appropriate for your wall.
2. Lift open the sides of the frame, put on gloves and carefully insert the graphic, making sure not to slide the graphic inside the frame.
3. Slide the frame on top of the wall bracket(s) using the french cleat bracket(s) mounted on the frame.
4. Connect the male and female connectors of power cord, then plug cord into power source.



Before beginning,
read precautions on
back of page



SupraSlim SnapFrame LED Light Box™ - SUL Series

Important Handling Instructions

1



Unpacking Instructions

- Handle with care when unpacking
- Big frames will need two people
- Cloth gloves are suggested (included)
- Unpack in a **clean and dust-free** environment

2



Graphic/Duratrans and Liner Insertion

- Insert into frame, **do not slide across acrylic**
- All has to be **clean and debris-free**
- Clean with lint-free cloth before inserting into frame

3



Cleaning Instructions

- Use cloth gloves when handling
- Use lint-free cloth to wipe clean
- Do not use ammonia-based cleaners (such as window cleaners)

4



Storage Instructions when not being directly installed

- Repack frame in it's original packaging
- Place frame on a flat surface, facing upright
- Do not pile anything on top of the frame
- Do not tilt the frame

5



Modification

- Do not alter frame or frame rails in any way