

VAIL-40S FABRIC FRAME

RESORT EXTRUSIONS

PRODUCT CODE: VAIL-40S



On frame On graphic



Outside Solid Finish



Triangle Corner Connectors



Silicone Edge Graphic



Tool Free Corner Connector (Optional Upgrade)

PRODUCT DESCRIPTION

The Vail fabric frames make up the perfect blend of class and versatility. The edges of the fabric press into the frame making graphic installation and removal a simple task. The Vail's outside solid finish serves as a perfect alternative to the already popular Aspen frame. Available in custom width and height lengths that extend beyond 8' with the use of a split connector.

DISPLAY DIMENSIONS 24"W x 24"H x 1.6"D to 96"W x 96"H x 1.6"D

GRAPHIC SIZE 24"W x 24"H to 96"W x 96"H

GRAPHIC MATERIAL

Satin Fabric

GRAPHIC FINISHING

Silicone edge beading sewn to the perimeter of the graphic.

DISPLAY CONSTRUCTION

Aluminum frame and components.

SHIPPING DIMENSIONS & WEIGHT (PER BOX)

DIMENSIONS 4"L x 4"W x 24" to 4"L x 4"W x 96"H

WEIGHT CHART (per box)

	2'H	3'H	4'H	5'H	6'H	7'H	8'H
2'W	7.5 lbs	9 lbs	11 lbs	12.5 lbs	14 lbs	15.5 lbs	17 lbs
3'W	9 lbs	10.5 lbs	13 lbs	14.5 lbs	16 lbs	17.5 lbs	19 lbs
4'W	11 lbs	13 lbs	14.5 lbs	16 lbs	17.5 lbs	20 lbs	22 lbs
5'W	12.5 lbs	14.5 lbs	16 lbs	18 lbs	20 lbs	22 lbs	24 lbs
6'W	14 lbs	16 lbs	17.5 lbs	20 lbs	22 lbs	24 lbs	26 lbs
7'W	15.5 lbs	17.5 lbs	20 lbs	22 lbs	24 lbs	26 lbs	28 lbs
8'W	17 lbs	19 lbs	22 lbs	24 lbs	26 lbs	28 lbs	30.5 lbs

*includes triangle corner connectors and 1 graphic.

LARGE QUANTITY FREIGHT

FREIGHT SHIPPING

Below 48" length
40 boxes per
48"L x 40"W x 41"H skid

Above 48" length
40 boxes per
96"L x 40"W x 41"H skid

FREIGHT WEIGHT (per skid)

	2'H	3'H	4'H	5'H	6'H	7'H	8'H
2'W	335 lbs	395 lbs	479 lbs	570 lbs	630 lbs	690 lbs	750 lbs
3'W	395 lbs	455 lbs	555 lbs	650 lbs	710 lbs	770 lbs	830 lbs
4'W	479 lbs	555 lbs	650 lbs	710 lbs	770 lbs	870 lbs	915 lbs
5'W	570 lbs	650 lbs	710 lbs	790 lbs	870 lbs	915 lbs	1030 lbs
6'W	630 lbs	710 lbs	770 lbs	870 lbs	915 lbs	1030 lbs	1110 lbs
7'W	690 lbs	770 lbs	870 lbs	915 lbs	1030 lbs	1110 lbs	1190 lbs
8'W	750 lbs	830 lbs	915 lbs	1030 lbs	1110 lbs	1190 lbs	1290 lbs

*includes triangle corner connectors, graphic, and pallet(s).

GRAPHIC TURN AROUND TIME

Standard 2 business days (up to 2 graphics)

AVAILABLE ACCESSORIES

Black or Silver Light (Small / Large)	Tool Free Corner and Center Connector
Vail Feet (12", 16", and 20")	Yeti Side Feet
Wall Mount	Split Connector
T135 LED Light	Resort Ladder Light

AVAILABILITY CA Only

VAIL-40D FABRIC FRAME

RESORT EXTRUSIONS
PRODUCT CODE: VAIL-40D



Outside Solid Finish



Triangle Corner Connectors



Double-sided
Silicone Edge Graphics



Tool Free Corner Connector
(Optional Upgrade)

PRODUCT DESCRIPTION

The Vail-40D fabric frame is set up for double-sided graphics. The edges of the fabric press into both sides of the frame making graphic installation and removal a simple task. The Vail's outside solid finish serves as a perfect alternative to the already popular Aspen frame. Available in custom width and height lengths that extend beyond 8' with the use of a split connector.

DISPLAY DIMENSIONS 24"W x 24"H x 1.6"D to 96"W x 96"H x 1.6"D

GRAPHIC SIZE 24"W x 24"H to 96"W x 96"H

GRAPHIC MATERIAL

Satin Fabric

GRAPHIC FINISHING

Silicone edge beading sewn to the perimeter of the graphic.

DISPLAY CONSTRUCTION

Aluminum frame and components.

SHIPPING DIMENSIONS & WEIGHT (PER BOX)

DIMENSIONS 4"L x 4"W x 24" to 4"L x 4"W x 96"H

WEIGHT CHART (per box)

	2'H	3'H	4'H	5'H	6'H	7'H	8'H
2'W	8.5 lbs	10 lbs	12.5 lbs	14 lbs	15.5 lbs	17 lbs	18.5 lbs
3'W	10 lbs	11.5 lbs	15 lbs	16.5 lbs	18 lbs	19.5 lbs	21 lbs
4'W	12.5 lbs	15 lbs	16.5 lbs	18 lbs	19.5 lbs	23 lbs	25.5 lbs
5'W	14 lbs	16.5 lbs	18 lbs	20.5 lbs	23 lbs	25.5 lbs	28 lbs
6'W	15.5 lbs	18 lbs	19.5 lbs	23 lbs	25.5 lbs	28 lbs	30.5 lbs
7'W	17 lbs	19.5 lbs	23 lbs	25.5 lbs	28 lbs	30.5 lbs	33 lbs
8'W	18.5 lbs	21 lbs	25.5 lbs	28 lbs	30.5 lbs	33 lbs	36.5 lbs

*includes triangle corner connectors and 2 graphics.

LARGE QUANTITY FREIGHT

FREIGHT SHIPPING

Below 48" length 40 boxes per 48"L x 40"W x 41"H skid	Above 48" length 40 boxes per 96"L x 40"W x 41"H skid
---	---

FREIGHT WEIGHT (per skid)

	2'H	3'H	4'H	5'H	6'H	7'H	8'H
2'W	375 lbs	435 lbs	535 lbs	630 lbs	690 lbs	750 lbs	810 lbs
3'W	440 lbs	495 lbs	635 lbs	730 lbs	790 lbs	850 lbs	910 lbs
4'W	535 lbs	635 lbs	730 lbs	790 lbs	850 lbs	990 lbs	1090 lbs
5'W	630 lbs	730 lbs	790 lbs	890 lbs	990 lbs	1090 lbs	1190 lbs
6'W	690 lbs	790 lbs	850 lbs	990 lbs	1090 lbs	1190 lbs	1290 lbs
7'W	750 lbs	850 lbs	990 lbs	1090 lbs	1190 lbs	1290 lbs	1390 lbs
8'W	810 lbs	910 lbs	1090 lbs	1190 lbs	1290 lbs	1390 lbs	1530 lbs

*includes triangle corner connectors, graphics, and pallet(s).

GRAPHIC TURN AROUND TIME

Standard 2 business days (up to 2 graphics)

AVAILABLE ACCESSORIES

Black or Silver Light (Small / Large)	Tool Free Corner and Center Connector
Vail Feet (12", 16", and 20")	Yeti Side Feet
Wall Mount	Split Connector
T135 LED Light	Resort Ladder Light

AVAILABILITY CA Only

VAIL-60S FABRIC FRAME

RESORT EXTRUSIONS

PRODUCT CODE: VAIL-60S



On frame On graphic



Outside Solid Finish



Triangle Corner Connectors



Silicone Edge Graphic



Tool Free Corner Connector (Optional Upgrade)

PRODUCT DESCRIPTION

The Vail-60S fabric frame is set up for a single-sided graphic. The edges of the fabric press into the channel of the frame making graphic installation and removal a simple task. The Vail's outside solid finish serves as a perfect alternative to the already popular Aspen frame. Available in custom width and height lengths that extend beyond 8' with the use of a split connector.

DISPLAY DIMENSIONS	24"W x 24"H x 2.4"D to 96"W x 96"H x 2.4"D
--------------------	--

GRAPHIC SIZE	24"W x 24"H to 96"W x 96"H
--------------	----------------------------

GRAPHIC MATERIAL

Satin Fabric

GRAPHIC FINISHING

Silicone edge beading sewn to the perimeter of the graphic.

DISPLAY CONSTRUCTION

Aluminum frame and components.

SHIPPING DIMENSIONS & WEIGHT (PER BOX)

DIMENSIONS	4"L x 4"W x 24" to 4"L x 4"W x 96"H
------------	-------------------------------------

WEIGHT CHART (per box)

	2'H	3'H	4'H	5'H	6'H	7'H	8'H
2'W	9 lbs	10.5 lbs	14 lbs	15.5 lbs	18 lbs	21 lbs	23 lbs
3'W	10.5 lbs	14 lbs	16.5 lbs	19 lbs	21.5 lbs	24 lbs	26.5 lbs
4'W	14 lbs	16.5 lbs	18.5 lbs	20.5 lbs	22.5 lbs	24.5 lbs	27.5 lbs
5'W	15.5 lbs	19 lbs	20.5 lbs	22.5 lbs	24 lbs	27 lbs	29.5 lbs
6'W	18 lbs	21.5 lbs	22.5 lbs	24 lbs	27 lbs	29.5 lbs	31.5 lbs
7'W	21 lbs	24 lbs	24.5 lbs	27 lbs	29.5 lbs	32.5 lbs	35 lbs
8'W	23 lbs	26.5 lbs	27.5 lbs	29.5 lbs	31.5 lbs	35 lbs	37 lbs

*includes triangle corner connectors and 1 graphic.

LARGE QUANTITY FREIGHT

FREIGHT SHIPPING

Below 48" length 40 boxes per 48"L x 40"W x 41"H skid	Above 48" length 40 boxes per 96"L x 40"W x 41"H skid
---	---

FREIGHT WEIGHT (per skid)

	2'H	3'H	4'H	5'H	6'H	7'H	8'H
2'W	395 lbs	455 lbs	595 lbs	690 lbs	790 lbs	910 lbs	990 lbs
3'W	455 lbs	595 lbs	695 lbs	830 lbs	930 lbs	1030 lbs	1130 lbs
4'W	595 lbs	695 lbs	775 lbs	890 lbs	970 lbs	1050 lbs	1170 lbs
5'W	690 lbs	830 lbs	890 lbs	970 lbs	1030 lbs	1150 lbs	1250 lbs
6'W	790 lbs	930 lbs	970 lbs	1030 lbs	1150 lbs	1250 lbs	1330 lbs
7'W	910 lbs	1030 lbs	1050 lbs	1150 lbs	1250 lbs	1370 lbs	1470 lbs
8'W	990 lbs	1130 lbs	1170 lbs	1250 lbs	1330 lbs	1470 lbs	1550 lbs

*includes triangle corner connectors, graphic, and pallet(s).

GRAPHIC TURN AROUND TIME

Standard 2 business days (up to 2 graphics)

AVAILABLE ACCESSORIES

Black or Silver Light (Small / Large)	Tool Free Corner and Center Connector
Vail Feet (12", 16", and 20")	Yeti Side Feet
Wall Mount	Split Connector
T135 LED Light	Resort Ladder Light

AVAILABILITY

CA Only

VAIL-60D FABRIC FRAME

RESORT EXTRUSIONS

PRODUCT CODE: VAIL-60D



On frame · On graphic



Outside Solid Finish



Triangle Corner Connectors



Double-sided Silicone Edge Graphics



Tool Free Corner Connector (Optional Upgrade)

PRODUCT DESCRIPTION

The Vail-60D fabric frame is set up for a double-sided graphic. The edges of the fabric press into the channel of the frame making graphic installation and removal a simple task. The Vail's outside solid finish serves as a perfect alternative to the already popular Aspen frame. Available in custom width and height lengths that extend beyond 8' with the use of a split connector.

DISPLAY DIMENSIONS	24"W x 24"H x 2.4"D to 96"W x 96"H x 2.4"D
GRAPHIC SIZE	24"W x 24"H to 96"W x 96"H

GRAPHIC MATERIAL

Satin Fabric

GRAPHIC FINISHING

Silicone edge beading sewn to the perimeter of the graphic.

DISPLAY CONSTRUCTION

Aluminum frame and components.

SHIPPING DIMENSIONS & WEIGHT (PER BOX)

DIMENSIONS	4"L x 4"W x 24" to 4"L x 4"W x 96"H
------------	-------------------------------------

WEIGHT CHART (per box)

	2'H	3'H	4'H	5'H	6'H	7'H	8'H
2'W	10 lbs	12 lbs	15.5 lbs	17 lbs	20.5 lbs	25 lbs	27.5 lbs
3'W	12 lbs	15.5 lbs	17 lbs	21.5 lbs	25 lbs	28.5 lbs	32 lbs
4'W	15.5 lbs	18 lbs	20 lbs	23 lbs	25 lbs	29 lbs	33 lbs
5'W	17 lbs	21 lbs	23 lbs	25.5 lbs	27 lbs	31.5 lbs	35.5 lbs
6'W	20.5 lbs	24 lbs	25.5 lbs	27.5 lbs	31.5 lbs	34.5 lbs	37 lbs
7'W	25 lbs	28 lbs	28.5 lbs	31.5 lbs	34.5 lbs	37.5 lbs	41 lbs
8'W	27.5 lbs	31 lbs	32.5 lbs	34.5 lbs	36 lbs	40.5 lbs	43 lbs

*includes triangle corner connectors and 2 graphics.

LARGE QUANTITY FREIGHT

FREIGHT SHIPPING

Below 48" length 40 boxes per 48"L x 40"W x 41"H skid	Above 48" length 40 boxes per 96"L x 40"W x 41"H skid
---	---

FREIGHT WEIGHT (per skid)

	2'H	3'H	4'H	5'H	6'H	7'H	8'H
2'W	435 lbs	515 lbs	655 lbs	750 lbs	790 lbs	1070 lbs	1170 lbs
3'W	515 lbs	655 lbs	750 lbs	930 lbs	1070 lbs	1210 lbs	1350 lbs
4'W	655 lbs	790 lbs	870 lbs	990 lbs	1070 lbs	1230 lbs	1390 lbs
5'W	750 lbs	910 lbs	990 lbs	1090 lbs	1150 lbs	1330 lbs	1490 lbs
6'W	790 lbs	995 lbs	1090 lbs	1170 lbs	1330 lbs	1450 lbs	1550 lbs
7'W	1070 lbs	1190 lbs	1210 lbs	1330 lbs	1450 lbs	1570 lbs	1710 lbs
8'W	1170 lbs	1310 lbs	1370 lbs	1450 lbs	1510 lbs	1690 lbs	1790 lbs

*includes triangle corner connectors, graphics, and pallet(s).

GRAPHIC TURN AROUND TIME

Standard 2 business days (up to 2 graphics)

AVAILABLE ACCESSORIES

Black or Silver Light (Small / Large)	Tool Free Corner and Center Connector
Vail Feet (12", 16", and 20")	Yeti Side Feet
Wall Mount	Split Connector
T135 LED Light	Resort Ladder Light

AVAILABILITY CA Only

VAIL-100D FABRIC FRAME

RESORT EXTRUSIONS
PRODUCT CODE: VAIL-100D



On frame · On graphic



Outside Solid Finish



Triangle Corner Connectors



Double-sided
Silicone Edge Graphics



Tool Free Corner Connector
(Optional Upgrade)

PRODUCT DESCRIPTION

The Vail-100D fabric frame is a double-sided extrusion. The edges of the fabric press into the channel of the frame making graphic installation and removal a simple task. The Vail's outside solid finish serves as a perfect alternative to the already popular Aspen frame. Available in custom width and height lengths that extend beyond 8' with the use of a split connector.

DISPLAY DIMENSIONS	24"W x 24"H x 3.9"D to 96"W x 96"H x 3.9"D
GRAPHIC SIZE	24"W x 24"H to 96"W x 96"H

GRAPHIC MATERIAL

Satin Fabric

GRAPHIC FINISHING

Silicone edge beading sewn to the perimeter of the graphic.

DISPLAY CONSTRUCTION

Aluminum frame and components.

SHIPPING DIMENSIONS & WEIGHT (PER BOX)

DIMENSIONS	7"L x 7"W x 24" to 7"L x 7"W x 96"H
------------	-------------------------------------

WEIGHT CHART (per box)

	2'H	3'H	4'H	5'H	6'H	7'H	8'H
2'W	10 lbs	12 lbs	15.5 lbs	17 lbs	20.5 lbs	25 lbs	27.5 lbs
3'W	12 lbs	15.5 lbs	17 lbs	21.5 lbs	25 lbs	28.5 lbs	32 lbs
4'W	15.5 lbs	18 lbs	20 lbs	23 lbs	25.5 lbs	29 lbs	33 lbs
5'W	17 lbs	21 lbs	23 lbs	25.5 lbs	27.5 lbs	31.5 lbs	35.5 lbs
6'W	20.5 lbs	24 lbs	25.5 lbs	27.5 lbs	31.5 lbs	34.5 lbs	37 lbs
7'W	25 lbs	28 lbs	29 lbs	31.5 lbs	34.5 lbs	37.5 lbs	41 lbs
8'W	27.5 lbs	31 lbs	32.5 lbs	34.5 lbs	36 lbs	40.5 lbs	43 lbs

*includes triangle corner connectors and 2 graphics.

LARGE QUANTITY FREIGHT

FREIGHT SHIPPING

Below 48" length 35 boxes per 48"L x 40"W x 41"H skid	Above 48" length 35 boxes per 96"L x 40"W x 41"H skid
---	---

FREIGHT WEIGHT (per skid)

	2'H	3'H	4'H	5'H	6'H	7'H	8'H
2'W	385 lbs	455 lbs	578 lbs	665 lbs	788 lbs	945 lbs	1033 lbs
3'W	455 lbs	578 lbs	630 lbs	805 lbs	945 lbs	1068 lbs	1190 lbs
4'W	578 lbs	665 lbs	735 lbs	875 lbs	963 lbs	1085 lbs	1208 lbs
5'W	665 lbs	805 lbs	875 lbs	963 lbs	1033 lbs	1173 lbs	1313 lbs
6'W	788 lbs	910 lbs	963 lbs	1033 lbs	1173 lbs	1288 lbs	1365 lbs
7'W	945 lbs	1050 lbs	1085 lbs	1173 lbs	1288 lbs	1383 lbs	1505 lbs
8'W	1033 lbs	1155 lbs	1208 lbs	1278 lbs	1330 lbs	1505 lbs	1575 lbs

*includes triangle corner connectors, graphics, and pallet(s).

GRAPHIC TURN AROUND TIME

Standard 2 business days (up to 2 graphics)

AVAILABLE ACCESSORIES

Black or Silver Light (Small / Large)	Tool Free Corner and Center Connector
Vail Feet (12", 16", and 20")	Yeti Side Feet
Wall Mount	Edge Lit Light
T135 LED Light	Resort Ladder Light
AVAILABILITY	CA Only

VAIL-120D FABRIC FRAME

RESORT EXTRUSIONS
PRODUCT CODE: VAIL-120D



On frame · On graphic



Outside Solid Finish



Triangle Corner Connectors



Silicone Edge Graphic



Tool Free Corner Connector
(Optional Upgrade)

PRODUCT DESCRIPTION

The Vail-120D fabric frame is a double-sided extrusion. The edges of the fabric press into the channel of the frame making graphic installation and removal a simple task. The Vail's outside solid finish serves as a perfect alternative to the already popular Aspen frame. Available in custom width and height lengths that extend beyond 8' with the use of a split connector.

DISPLAY DIMENSIONS	24"W x 24"H x 4.7"D to 96"W x 96"H x 4.7"D
GRAPHIC SIZE	24"W x 24"H to 96"W x 96"H

GRAPHIC MATERIAL

Satin Fabric

GRAPHIC FINISHING

Silicone edge beading sewn to the perimeter of the graphic.

DISPLAY CONSTRUCTION

Aluminum frame and components.

SHIPPING DIMENSIONS & WEIGHT (PER BOX)

DIMENSIONS	7"L x 7"W x 24" to 7"L x 7"W x 96"H
------------	-------------------------------------

WEIGHT CHART (per box)

	2'H	3'H	4'H	5'H	6'H	7'H	8'H
2'W	10 lbs	12 lbs	14 lbs	16 lbs	19 lbs	22.5 lbs	25 lbs
3'W	12 lbs	14 lbs	16 lbs	19 lbs	22 lbs	25 lbs	28 lbs
4'W	14 lbs	16 lbs	18.5 lbs	21 lbs	23.5 lbs	27 lbs	30 lbs
5'W	16 lbs	19 lbs	21 lbs	23.5 lbs	26.5 lbs	29 lbs	32 lbs
6'W	19 lbs	22 lbs	23.5 lbs	26.5 lbs	29 lbs	31.5 lbs	34.5 lbs
7'W	22.5 lbs	25 lbs	27 lbs	29 lbs	31.5 lbs	34 lbs	36.5 lbs
8'W	25 lbs	28 lbs	30 lbs	32 lbs	34.5 lbs	36.5 lbs	39 lbs

*includes triangle corner connectors and 1 graphic.

LARGE QUANTITY FREIGHT

FREIGHT SHIPPING

Below 48" length 35 boxes per 48"L x 40"W x 41"H skid	Above 48" length 35 boxes per 96"L x 40"W x 41"H skid
---	---

FREIGHT WEIGHT (per skid)

	2'H	3'H	4'H	5'H	6'H	7'H	8'H
2'W	385 lbs	455 lbs	525 lbs	630 lbs	830 lbs	858 lbs	945 lbs
3'W	455 lbs	525 lbs	595 lbs	735 lbs	840 lbs	945 lbs	1050 lbs
4'W	525 lbs	595 lbs	775 lbs	805 lbs	893 lbs	1015 lbs	1120 lbs
5'W	630 lbs	700 lbs	770 lbs	893 lbs	998 lbs	1085 lbs	1190 lbs
6'W	735 lbs	840 lbs	893 lbs	998 lbs	1085 lbs	1173 lbs	1278 lbs
7'W	858 lbs	945 lbs	1015 lbs	1085 lbs	1173 lbs	1260 lbs	1348 lbs
8'W	945 lbs	1050 lbs	1120 lbs	1190 lbs	1278 lbs	1348 lbs	1435 lbs

*includes triangle corner connectors, graphics, and pallet(s).

GRAPHIC TURN AROUND TIME

Standard 2 business days (up to 2 graphics)

AVAILABLE ACCESSORIES

Black or Silver Light (Small / Large)	Tool Free Corner and Center Connector
Vail Feet (12", 16", and 20")	Yeti Side Feet
Wall Mount	Edge Lit Light
T135 LED Light	Resort Ladder Light

AVAILABILITY	CA Only
--------------	---------

VAIL-120DB FABRIC FRAME

RESORT EXTRUSIONS

PRODUCT CODE: VAIL-120DB



On frame · On graphic



Outside Solid Finish



Triangle Corner Connectors



Silicone Edge Graphic



Tool Free Corner Connector (Optional Upgrade)

PRODUCT DESCRIPTION

The VAIL-120DB is a double-sided extrusion. This extrusion has a solid outside finish and is just as thick as the VAIL-120D. This display is easy to mount on the wall because it is lightweight, but can also hang overhead or stand independently. The VAIL-120DB is especially good for edge-lights since its spine is shorter, holding the lights very close to the edges of the graphic. This extrusion is compatible with edge-lights or ladder lights (can be back-lit). Available in custom width and height lengths that extend beyond 8' with the use of a split connector.

DISPLAY DIMENSIONS	24"W x 24"H x 4.7"D to 96"W x 96"H x 4.7"D
GRAPHIC SIZE	24"W x 24"H to 96"W x 96"H

GRAPHIC MATERIAL

Satin Fabric

GRAPHIC FINISHING

Silicone edge beading sewn to the perimeter of the graphic.

DISPLAY CONSTRUCTION

Aluminum frame and components.

SHIPPING DIMENSIONS & WEIGHT (PER BOX)

DIMENSIONS	7"L x 7"W x 24" to 7"L x 7"W x 96"H
------------	-------------------------------------

WEIGHT CHART (per box)

	2'H	3'H	4'H	5'H	6'H	7'H	8'H
2'W	10 lbs	12 lbs	14 lbs	16 lbs	19 lbs	22.5 lbs	25 lbs
3'W	12 lbs	14 lbs	16 lbs	19 lbs	22 lbs	25 lbs	28 lbs
4'W	14 lbs	16 lbs	18.5 lbs	21 lbs	23.5 lbs	27 lbs	30 lbs
5'W	16 lbs	19 lbs	21 lbs	23.5 lbs	26.5 lbs	29 lbs	32 lbs
6'W	19 lbs	22 lbs	23.5 lbs	26.5 lbs	29 lbs	31.5 lbs	34.5 lbs
7'W	22.5 lbs	25 lbs	27 lbs	29 lbs	31.5 lbs	34 lbs	36.5 lbs
8'W	25 lbs	28 lbs	30 lbs	32 lbs	34.5 lbs	36.5 lbs	39 lbs

*includes triangle corner connectors and 1 graphic.

LARGE QUANTITY FREIGHT

FREIGHT SHIPPING

Below 48" length 35 boxes per 48"L x 40"W x 41"H skid	Above 48" length 35 boxes per 96"L x 40"W x 41"H skid
---	---

FREIGHT WEIGHT (per skid)

	2'H	3'H	4'H	5'H	6'H	7'H	8'H
2'W	385 lbs	455 lbs	525 lbs	630 lbs	830 lbs	858 lbs	945 lbs
3'W	455 lbs	525 lbs	595 lbs	735 lbs	840 lbs	945 lbs	1050 lbs
4'W	525 lbs	595 lbs	775 lbs	805 lbs	893 lbs	1015 lbs	1120 lbs
5'W	630 lbs	700 lbs	770 lbs	893 lbs	998 lbs	1085 lbs	1190 lbs
6'W	735 lbs	840 lbs	893 lbs	998 lbs	1085 lbs	1173 lbs	1278 lbs
7'W	858 lbs	945 lbs	1015 lbs	1085 lbs	1173 lbs	1260 lbs	1348 lbs
8'W	945 lbs	1050 lbs	1120 lbs	1190 lbs	1278 lbs	1348 lbs	1435 lbs

*includes triangle corner connectors, graphics, and pallet(s).

GRAPHIC TURN AROUND TIME

Standard 2 business days (up to 2 graphics)

AVAILABLE ACCESSORIES

Black or Silver Light (Small / Large)	Tool Free Corner and Center Connector
Vail Feet (12", 16", and 20")	Yeti Side Feet
Wall Mount	Edge Lit Light
T135 LED Light	Resort Ladder Light

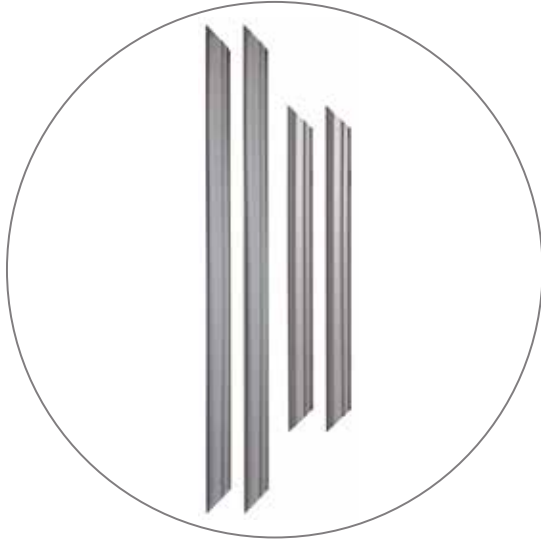
AVAILABILITY	CA Only
--------------	---------

PARTS LIST / REQUIRED TOOLS

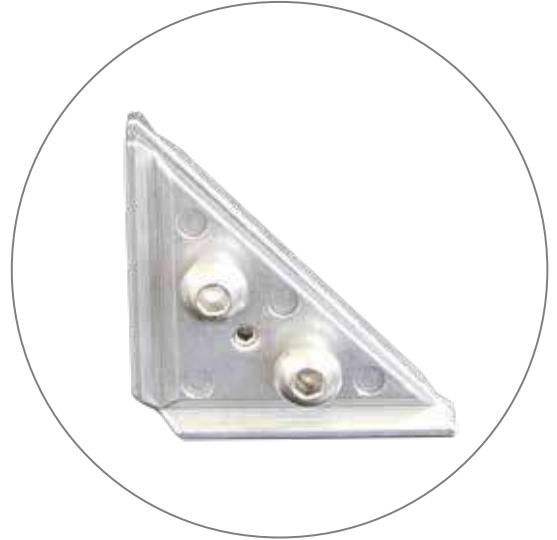
RESORT EXTRUSIONS



On frame On graphic



(Qty.4) Extrusions



(Qty.4) Triangle Corner Connectors



(Qty.2) 3mm and 5mm Allen Key
(included)



Tool Free Corner and Center Connectors



Split Connector
*For extrusion lengths exceeding 8'



Wall Mounts



Ceiling Hooks



Vail Feet - 12", 16", and 20"



Yeti Side Feet



T135 LED Light



Resort Ladder Light



Edge Lit Light



Small Silver Light
(50 W)



Small Black Light
(50 W)



Large Silver Light
(150 W)



Large Black Light
(150 W)

First - Build the Bottom Half

1. Lay Out Your Pieces:



a. We recommend to begin build on flat, soft surface.



b. *You'll need 2 people to assemble large frames.

2. Locate the Bottom and Side Extrusions:

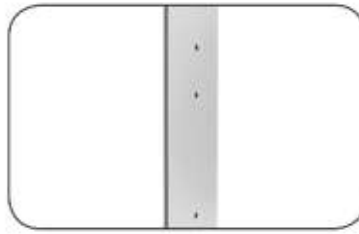


a. See colored numbers on each extrusion piece.

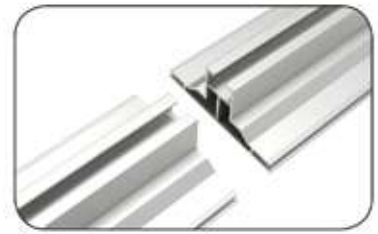
b. Match like colored numbers together. (e.g. 3-3, 4-4).



c. **Note:** Bottom extrusion(s) will have holes for feet type: *Vail* or *Aspen Flat*.



d. **Note:** Side extrusions will have holes toward bottom for feet type: *Yeti Side Feet*.



e. **Note:** Frames 9 feet or wider will have at least 2 bottom extrusions that need to be connected together.

3. Attach Split Connectors to Bottom Extrusions: FOR FRAMES 9 FT or WIDER ONLY. Smaller frames, Skip to #4.



a. **Tool Free:** With both levers up, slide into side of bottom extrusion channel that faces the frame's middle. Then attach other bottom extrusion onto the Tool Free Split Connector. Press both levers down to secure.



b. **Tooled:** Slide into side of bottom extrusion channel that faces the frame's middle. Then attach other bottom extrusion onto the Tooled Split Connector. Tighten screws with included *torx* key.



4. Attach Corner Connectors:



a. **Tool Free:** With both levers up, slide into bottom extrusion channel. Then attach side extrusion onto the Tool Free Connector. Press both levers down to secure.



b. **Triangle:** Slide into bottom extrusion channel. Then attach side extrusion onto the Triangle Connector. Tighten screws with included *5mm allen wrench*.



c. **L:** Align front lock plate with back pressure plate, backtoback. Slide into bottom extrusion channel. Then attach side extrusion onto the L Connector. Tighten screws with included *3mm allen wrench*.

Next - Add the Feet

1. Attach Vail Feet or Aspen Flat Feet:



- Remove wing-nuts from bolts.
- Align feet holes with holes on bottom extrusion.
- Replace wing-nuts and tighten by hand.

2. Attach Yeti Side Feet:



- Remove wing-nuts from bolts.
- Align foot holes with holes on each side extrusion.
- Replace wing-nuts and tighten by hand.

3. Now Stand the Frame on its Feet:



Vail Feet

Yeti Feet

Last - Build the Top Half

1. Locate the Top & Side Extrusions:



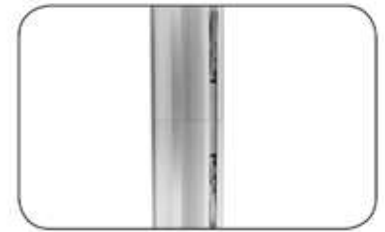
- See colored numbers on each extrusion piece.
- Match like colored numbers together. (e.g. 3-3, 4-4).
- Note: Frames 9 feet or taller will have at least 2 side extrusions that need to be connected together. (See directly below #2.)

2. Attach Split Connectors to Top Extrusions:



FOR FRAMES 9 FT or WIDER ONLY. Smaller frames, Skip to #3.

4. Attach Split Connectors to Side Extrusions:



3. Attach Corner Connectors:



Frames 8 ft or smaller, you're done.

FOR FRAMES 9 FT or TALLER ONLY

- Follow directions for Center Connector in the Bottom Half directions.
- Insert Center Connector into channel in side extrusions.
- With 2 people holding each side of the top half, attach top half to bottom half of frame.

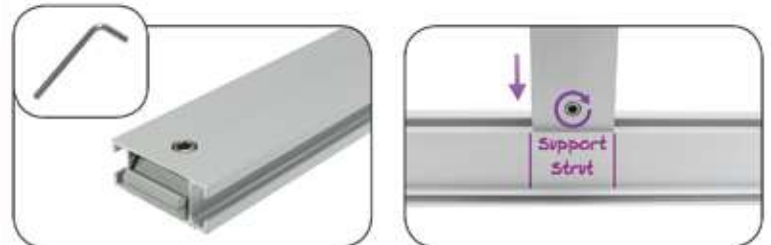
Extra Last Step: Make and Attach Support Strut - FOR FRAMES 9 FT or WIDER ONLY

1. Locate the 2 Vail 40C Extrusions & Center Connector:



- Note:** These extrusions are slender and smooth on both sides with 2 holes on each end.
- Remove screws from Center Connector.
- Insert Center Connector and align holes with holes on extrusion.
- Repeat to connect other extrusion to make one long piece.

2. Attach Support Strut to Frame:



- Vail End Lock is already attached to opposite ends of Support Strut.
- Find "Support Strut" label marked on the top and bottom extrusions.
- Align Support Strut within marked lines, and insert Vail End Lock into top and bottom grooves of frame.
- Tighten screws with 4mm allen wrench to secure.