

STREET POLE BANNER 24" X 36"

OUTDOOR BANNER STANDS

PRODUCT CODE: STB-24x36G



PRODUCT DESCRIPTION

Our Street Pole Banners are an effective way to display your message for street and sidewalk traffic to see. This is the perfect solution to promote street fairs, festivals, seasonal events, etc. Graphics are UV printed on double sided vinyl so your message will be visible from both sides. Pole pockets are sewn to the top and bottom of the banner and make for a quick and easy installation. Each Street Pole Banner hardware kit includes two mounting brackets, two fiberglass poles, four 304 stainless steel clamps, and is ready to display 1 double sided banner. If you would like to display more than 1 banner you can add multiple sets to the same street pole. The brackets are also drilled for screws if you want to attach the bracket to a wall instead of a street pole. Available in 3 pole widths: 24", 31.5" and 36" and 3 graphic heights: 36", 48", and 60". Compatible with round and square street poles 7.8" to 11.8" diameter.

GRAPHIC SIZE	24"W x 36"H
--------------	-------------

GRAPHIC MATERIAL

Double sided scrim vinyl

GRAPHIC FINISHING

2" Pole Pocket Top and Bottom

DISPLAY CONSTRUCTION

Cast aluminum brackets, with fiberglass poles and 304 stainless steel clamps

SHIPPING WEIGHTS & DIMENSIONS

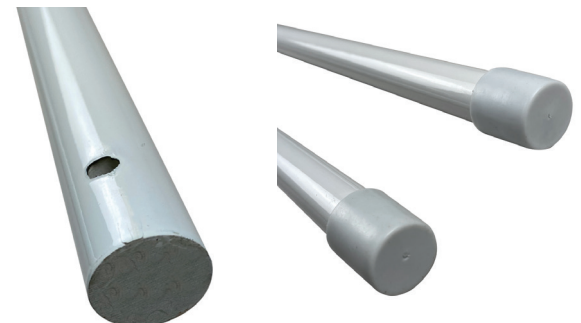
Shipping Weight	7 lbs (stand only) 1 lbs (graphic only) 8 lbs (frame and graphic)
Shipping Dimensions	40.75" L x 3" W x 2.75" H

GRAPHIC TURN AROUND TIME

3 business days after proof approval for up to 10 sets

AVAILABILITY	CA, PA, and PFC	
MIN/MAX STREET POLE DIAMETER	7.8" Min	11.8" Max
BEAUFORT WIND SCALE RATING	4 to 5	

Beaufort Number	Wind Speed (miles per hour)	Description	Wind Effects on Land
0	<1	Calm	Calm. Smoke rises vertically.
1	1-3	Light Air	Wind motion visible in smoke.
2	4-7	Light Breeze	Wind felt on exposed skin. Leaves rustle.
3	8-12	Gentle Breeze	Leaves and smaller twigs in constant motion.
4	13-18	Moderate Breeze	Dust and loose paper are raised. Small branches begin to move.
5	19-24	Fresh Breeze	Small trees begin to sway.
6	25-31	Strong Breeze	Large branches are in motion. Whistling is heard in overhead wires. Umbrella use is difficult.
7	32-38	Near Gale	Whole trees in motion. Some difficulty experienced walking into the wind.
8	39-46	Gale	Twigs and small branches break from trees. Cars veer on road.



Solid Fiberglass Poles

Pole End Caps

STREET POLE BANNER 24" X 48"

OUTDOOR BANNER STANDS

PRODUCT CODE: STB-24x48G



PRODUCT DESCRIPTION

Our Street Pole Banners are an effective way to display your message for street and sidewalk traffic to see. This is the perfect solution to promote street fairs, festivals, seasonal events, etc. Graphics are UV printed on double sided vinyl so your message will be visible from both sides. Pole pockets are sewn to the top and bottom of the banner and make for a quick and easy installation. Each Street Pole Banner hardware kit includes two mounting brackets, two fiberglass poles, four 304 stainless steel clamps, and is ready to display 1 double sided banner. If you would like to display more than 1 banner you can add multiple sets to the same street pole. The brackets are also drilled for screws if you want to attach the bracket to a wall instead of a street pole. Available in 3 pole widths: 24", 31.5" and 36" and 3 graphic heights: 36", 48", and 60". Compatible with round and square street poles 7.8" to 11.8" diameter.

GRAPHIC SIZE 24"W x 48"H

GRAPHIC MATERIAL

Double sided scrim vinyl

GRAPHIC FINISHING

2" Pole Pocket Top and Bottom

DISPLAY CONSTRUCTION

Cast aluminum brackets, with fiberglass poles and 304 stainless steel clamps

SHIPPING WEIGHTS & DIMENSIONS

Shipping Weight 7 lbs (stand only)
1 lbs (graphic only)
8 lbs (frame and graphic)

Shipping Dimensions 40.75" L x 3" W x 2.75" H

GRAPHIC TURN AROUND TIME

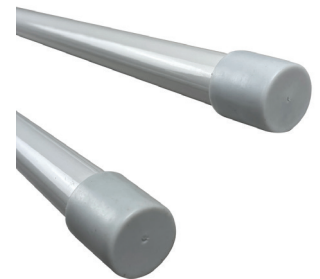
3 business days after proof approval for up to 10 sets

AVAILABILITY CA, PA, and PFC

MIN/MAX STREET POLE DIAMETER 7.8" Min 11.8" Max

BEAUFORT WIND SCALE RATING 4 to 5

Beaufort Number	Wind Speed (miles per hour)	Description	Wind Effects on Land
0	<1	Calm	Calm. Smoke rises vertically.
1	1-3	Light Air	Wind motion visible in smoke.
2	4-7	Light Breeze	Wind felt on exposed skin. Leaves rustle.
3	8-12	Gentle Breeze	Leaves and smaller twigs in constant motion.
4	13-18	Moderate Breeze	Dust and loose paper are raised. Small branches begin to move.
5	19-24	Fresh Breeze	Small trees begin to sway.
6	25-31	Strong Breeze	Large branches are in motion. Whistling is heard in overhead wires. Umbrella use is difficult.
7	32-38	Near Gale	Whole trees in motion. Some difficulty experienced walking into the wind.
8	39-46	Gale	Twigs and small branches break from trees. Cars veer on road.



Solid Fiberglass Poles

Pole End Caps

STREET POLE BANNER 24" X 60"

OUTDOOR BANNER STANDS

PRODUCT CODE: STB-24x60G



PRODUCT DESCRIPTION

Our Street Pole Banners are an effective way to display your message for street and sidewalk traffic to see. This is the perfect solution to promote street fairs, festivals, seasonal events, etc. Graphics are UV printed on double sided vinyl so your message will be visible from both sides. Pole pockets are sewn to the top and bottom of the banner and make for a quick and easy installation. Each Street Pole Banner hardware kit includes two mounting brackets, two fiberglass poles, four 304 stainless steel clamps, and is ready to display 1 double sided banner. If you would like to display more than 1 banner you can add multiple sets to the same street pole. The brackets are also drilled for screws if you want to attach the bracket to a wall instead of a street pole. Available in 3 pole widths: 24", 31.5" and 36" and 3 graphic heights: 36", 48", and 60". Compatible with round and square street poles 7.8" to 11.8" diameter.

GRAPHIC SIZE 24"W x 60"H

GRAPHIC MATERIAL

Double sided scrim vinyl

GRAPHIC FINISHING

2" Pole Pocket Top and Bottom

DISPLAY CONSTRUCTION

Cast aluminum brackets, with fiberglass poles and 304 stainless steel clamps

SHIPPING WEIGHTS & DIMENSIONS

Shipping Weight 7 lbs (stand only)
2 lbs (graphic only)
9 lbs (frame and graphic)

Shipping Dimensions 40.75" L x 3" W x 2.75" H

GRAPHIC TURN AROUND TIME

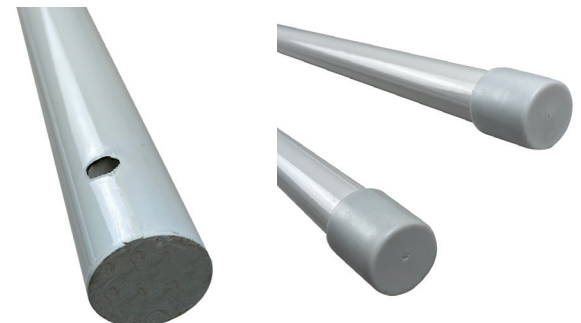
3 business days after proof approval for up to 10 sets

AVAILABILITY CA, PA, and PFC

MIN/MAX STREET POLE DIAMETER 7.8" Min 11.8" Max

BEAUFORT WIND SCALE RATING 4 to 5

Beaufort Number	Wind Speed (miles per hour)	Description	Wind Effects on Land
0	<1	Calm	Calm. Smoke rises vertically.
1	1-3	Light Air	Wind motion visible in smoke.
2	4-7	Light Breeze	Wind felt on exposed skin. Leaves rustle.
3	8-12	Gentle Breeze	Leaves and smaller twigs in constant motion.
4	13-18	Moderate Breeze	Dust and loose paper are raised. Small branches begin to move.
5	19-24	Fresh Breeze	Small trees begin to sway.
6	25-31	Strong Breeze	Large branches are in motion. Whistling is heard in overhead wires. Umbrella use is difficult.
7	32-38	Near Gale	Whole trees in motion. Some difficulty experienced walking into the wind.
8	39-46	Gale	Twigs and small branches break from trees. Cars veer on road.



Solid Fiberglass Poles

Pole End Caps

STREET POLE BANNER 31.5" X 36"

OUTDOOR BANNER STANDS

PRODUCT CODE: STB-31x36G



PRODUCT DESCRIPTION

Our Street Pole Banners are an effective way to display your message for street and sidewalk traffic to see. This is the perfect solution to promote street fairs, festivals, seasonal events, etc. Graphics are UV printed on double sided vinyl so your message will be visible from both sides. Pole pockets are sewn to the top and bottom of the banner and make for a quick and easy installation. Each Street Pole Banner hardware kit includes two mounting brackets, two fiberglass poles, four 304 stainless steel clamps, and is ready to display 1 double sided banner. If you would like to display more than 1 banner you can add multiple sets to the same street pole. The brackets are also drilled for screws if you want to attach the bracket to a wall instead of a street pole. Available in 3 pole widths: 24", 31.5" and 36" and 3 graphic heights: 36", 48", and 60". Compatible with round and square street poles 7.8" to 11.8" diameter.

GRAPHIC SIZE 31.5"W x 36"H

GRAPHIC MATERIAL

Double sided scrim vinyl

GRAPHIC FINISHING

2" Pole Pocket Top and Bottom

DISPLAY CONSTRUCTION

Cast aluminum brackets, with fiberglass poles and 304 stainless steel clamps

SHIPPING WEIGHTS & DIMENSIONS

Shipping Weight 9 lbs (stand only)
1 lbs (graphic only)
10 lbs (frame and graphic)

Shipping Dimensions 40.75" L x 3" W x 2.75" H

GRAPHIC TURN AROUND TIME

3 business days after proof approval for up to 10 sets

AVAILABILITY CA, PA, and PFC

MIN/MAX STREET POLE DIAMETER 7.8" Min 11.8" Max

BEAUFORT WIND SCALE RATING 4 to 5

Beaufort Number	Wind Speed (miles per hour)	Description	Wind Effects on Land
0	<1	Calm	Calm. Smoke rises vertically.
1	1-3	Light Air	Wind motion visible in smoke.
2	4-7	Light Breeze	Wind felt on exposed skin. Leaves rustle.
3	8-12	Gentle Breeze	Leaves and smaller twigs in constant motion.
4	13-18	Moderate Breeze	Dust and loose paper are raised. Small branches begin to move.
5	19-24	Fresh Breeze	Small trees begin to sway.
6	25-31	Strong Breeze	Large branches are in motion. Whistling is heard in overhead wires. Umbrella use is difficult.
7	32-38	Near Gale	Whole trees in motion. Some difficulty experienced walking into the wind.
8	39-46	Gale	Twigs and small branches break from trees. Cars veer on road.



Solid Fiberglass Poles

Pole End Caps

STREET POLE BANNER 31.5" X 48"

OUTDOOR BANNER STANDS

PRODUCT CODE: STB-31x48G

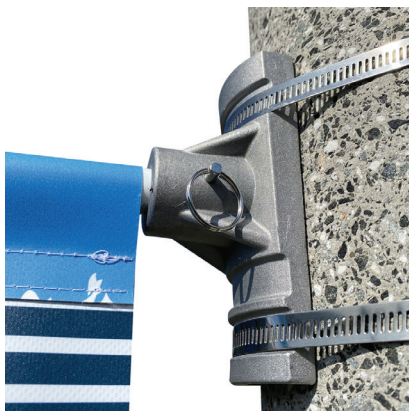


PRODUCT DESCRIPTION

Our Street Pole Banners are an effective way to display your message for street and sidewalk traffic to see. This is the perfect solution to promote street fairs, festivals, seasonal events, etc. Graphics are UV printed on double sided vinyl so your message will be visible from both sides. Pole pockets are sewn to the top and bottom of the banner and make for a quick and easy installation. Each Street Pole Banner hardware kit includes two mounting brackets, two fiberglass poles, four 304 stainless steel clamps, and is ready to display 1 double sided banner. If you would like to display more than 1 banner you can add multiple sets to the same street pole. The brackets are also drilled for screws if you want to attach the bracket to a wall instead of a street pole. Available in 3 pole widths: 24", 31.5" and 36" and 3 graphic heights: 36", 48", and 60". Compatible with round and square street poles 7.8" to 11.8" diameter.

GRAPHIC SIZE	31.5"W x 48"H	
GRAPHIC MATERIAL		
Double sided scrim vinyl		
GRAPHIC FINISHING		
2" Pole Pocket Top and Bottom		
DISPLAY CONSTRUCTION		
Cast aluminum brackets, with fiberglass poles and 304 stainless steel clamps		
SHIPPING WEIGHTS & DIMENSIONS		
Shipping Weight	9 lbs (stand only) 2 lbs (graphic only) 11 lbs (frame and graphic)	
Shipping Dimensions	40.75" L x 3" W x 2.75" H	
GRAPHIC TURN AROUND TIME		
3 business days after proof approval for up to 10 sets		
AVAILABILITY	CA, PA, and PFC	
MIN/MAX STREET POLE DIAMETER	7.8" Min	11.8" Max
BEAUFORT WIND SCALE RATING	4 to 5	

Beaufort Number	Wind Speed (miles per hour)	Description	Wind Effects on Land
0	<1	Calm	Calm. Smoke rises vertically.
1	1-3	Light Air	Wind motion visible in smoke.
2	4-7	Light Breeze	Wind felt on exposed skin. Leaves rustle.
3	8-12	Gentle Breeze	Leaves and smaller twigs in constant motion.
4	13-18	Moderate Breeze	Dust and loose paper are raised. Small branches begin to move.
5	19-24	Fresh Breeze	Small trees begin to sway.
6	25-31	Strong Breeze	Large branches are in motion. Whistling is heard in overhead wires. Umbrella use is difficult.
7	32-38	Near Gale	Whole trees in motion. Some difficulty experienced walking into the wind.
8	39-46	Gale	Twigs and small branches break from trees. Cars veer on road.



Solid Fiberglass Poles

Pole End Caps

STREET POLE BANNER 31.5" X 60"

OUTDOOR BANNER STANDS

PRODUCT CODE: STB-31x60G



PRODUCT DESCRIPTION

Our Street Pole Banners are an effective way to display your message for street and sidewalk traffic to see. This is the perfect solution to promote street fairs, festivals, seasonal events, etc. Graphics are UV printed on double sided vinyl so your message will be visible from both sides. Pole pockets are sewn to the top and bottom of the banner and make for a quick and easy installation. Each Street Pole Banner hardware kit includes two mounting brackets, two fiberglass poles, four 304 stainless steel clamps, and is ready to display 1 double sided banner. If you would like to display more than 1 banner you can add multiple sets to the same street pole. The brackets are also drilled for screws if you want to attach the bracket to a wall instead of a street pole. Available in 3 pole widths: 24", 31.5" and 36" and 3 graphic heights: 36", 48", and 60". Compatible with round and square street poles 7.8" to 11.8" diameter.

GRAPHIC SIZE	31.5"W x 60"H
--------------	---------------

GRAPHIC MATERIAL

Double sided scrim vinyl

GRAPHIC FINISHING

2" Pole Pocket Top and Bottom

DISPLAY CONSTRUCTION

Cast aluminum brackets, with fiberglass poles and 304 stainless steel clamps

SHIPPING WEIGHTS & DIMENSIONS

Shipping Weight	9 lbs (stand only)
	2 lbs (graphic only)
	11 lbs (frame and graphic)

Shipping Dimensions	40.75" L x 3" W x 2.75" H
---------------------	---------------------------

GRAPHIC TURN AROUND TIME

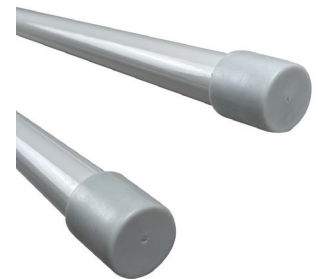
3 business days after proof approval for up to 10 sets

AVAILABILITY	CA, PA, and PFC
--------------	-----------------

MIN/MAX STREET POLE DIAMETER	7.8" Min	11.8" Max
------------------------------	----------	-----------

BEAUFORT WIND SCALE RATING	4 to 5
----------------------------	--------

Beaufort Number	Wind Speed (miles per hour)	Description	Wind Effects on Land
0	<1	Calm	Calm. Smoke rises vertically.
1	1-3	Light Air	Wind motion visible in smoke.
2	4-7	Light Breeze	Wind felt on exposed skin. Leaves rustle.
3	8-12	Gentle Breeze	Leaves and smaller twigs in constant motion.
4	13-18	Moderate Breeze	Dust and loose paper are raised. Small branches begin to move.
5	19-24	Fresh Breeze	Small trees begin to sway.
6	25-31	Strong Breeze	Large branches are in motion. Whistling is heard in overhead wires. Umbrella use is difficult.
7	32-38	Near Gale	Whole trees in motion. Some difficulty experienced walking into the wind.
8	39-46	Gale	Twigs and small branches break from trees. Cars veer on road.



Solid Fiberglass Poles

Pole End Caps

STREET POLE BANNER 36" X 36"

OUTDOOR BANNER STANDS

PRODUCT CODE: STB-36x36G



PRODUCT DESCRIPTION

Our Street Pole Banners are an effective way to display your message for street and sidewalk traffic to see. This is the perfect solution to promote street fairs, festivals, seasonal events, etc. Graphics are UV printed on double sided vinyl so your message will be visible from both sides. Pole pockets are sewn to the top and bottom of the banner and make for a quick and easy installation. Each Street Pole Banner hardware kit includes two mounting brackets, two fiberglass poles, four 304 stainless steel clamps, and is ready to display 1 double sided banner. If you would like to display more than 1 banner you can add multiple sets to the same street pole. The brackets are also drilled for screws if you want to attach the bracket to a wall instead of a street pole. Available in 3 pole widths: 24", 31.5" and 36" and 3 graphic heights: 36", 48", and 60". Compatible with round and square street poles 7.8" to 11.8" diameter.

GRAPHIC SIZE 36"W x 36"H

GRAPHIC MATERIAL

Double sided scrim vinyl

GRAPHIC FINISHING

2" Pole Pocket Top and Bottom

DISPLAY CONSTRUCTION

Cast aluminum brackets, with fiberglass poles and 304 stainless steel clamps

SHIPPING WEIGHTS & DIMENSIONS

Shipping Weight 9 lbs (stand only)
1 lbs (graphic only)
10 lbs (frame and graphic)

Shipping Dimensions 40.75" L x 3" W x 2.75" H

GRAPHIC TURN AROUND TIME

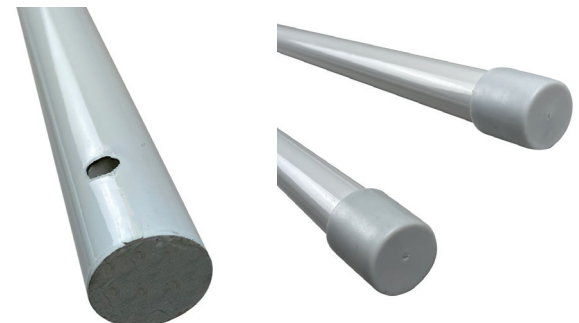
3 business days after proof approval for up to 10 sets

AVAILABILITY CA, PA, and PFC

MIN/MAX STREET POLE DIAMETER 7.8" Min 11.8" Max

BEAUFORT WIND SCALE RATING 4 to 5

Beaufort Number	Wind Speed (miles per hour)	Description	Wind Effects on Land
0	<1	Calm	Calm. Smoke rises vertically.
1	1-3	Light Air	Wind motion visible in smoke.
2	4-7	Light Breeze	Wind felt on exposed skin. Leaves rustle.
3	8-12	Gentle Breeze	Leaves and smaller twigs in constant motion.
4	13-18	Moderate Breeze	Dust and loose paper are raised. Small branches begin to move.
5	19-24	Fresh Breeze	Small trees begin to sway.
6	25-31	Strong Breeze	Large branches are in motion. Whistling is heard in overhead wires. Umbrella use is difficult.
7	32-38	Near Gale	Whole trees in motion. Some difficulty experienced walking into the wind.
8	39-46	Gale	Twigs and small branches break from trees. Cars veer on road.



Solid Fiberglass Poles

Pole End Caps

STREET POLE BANNER 36" X 48"

OUTDOOR BANNER STANDS

PRODUCT CODE: STB-36x48G



PRODUCT DESCRIPTION

Our Street Pole Banners are an effective way to display your message for street and sidewalk traffic to see. This is the perfect solution to promote street fairs, festivals, seasonal events, etc. Graphics are UV printed on double sided vinyl so your message will be visible from both sides. Pole pockets are sewn to the top and bottom of the banner and make for a quick and easy installation. Each Street Pole Banner hardware kit includes two mounting brackets, two fiberglass poles, four 304 stainless steel clamps, and is ready to display 1 double sided banner. If you would like to display more than 1 banner you can add multiple sets to the same street pole. The brackets are also drilled for screws if you want to attach the bracket to a wall instead of a street pole. Available in 3 pole widths: 24", 31.5" and 36" and 3 graphic heights: 36", 48", and 60". Compatible with round and square street poles 7.8" to 11.8" diameter.

GRAPHIC SIZE 36"W x 48"H

GRAPHIC MATERIAL

Double sided scrim vinyl

GRAPHIC FINISHING

2" Pole Pocket Top and Bottom

DISPLAY CONSTRUCTION

Cast aluminum brackets, with fiberglass poles and 304 stainless steel clamps

SHIPPING WEIGHTS & DIMENSIONS

Shipping Weight 9 lbs (stand only)
2 lbs (graphic only)
11 lbs (frame and graphic)

Shipping Dimensions 40.75" L x 3" W x 2.75" H

GRAPHIC TURN AROUND TIME

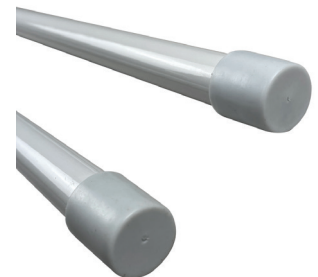
3 business days after proof approval for up to 10 sets

AVAILABILITY CA, PA, and PFC

MIN/MAX STREET POLE DIAMETER 7.8" Min 11.8" Max

BEAUFORT WIND SCALE RATING 4 to 5

Beaufort Number	Wind Speed (miles per hour)	Description	Wind Effects on Land
0	<1	Calm	Calm. Smoke rises vertically.
1	1-3	Light Air	Wind motion visible in smoke.
2	4-7	Light Breeze	Wind felt on exposed skin. Leaves rustle.
3	8-12	Gentle Breeze	Leaves and smaller twigs in constant motion.
4	13-18	Moderate Breeze	Dust and loose paper are raised. Small branches begin to move.
5	19-24	Fresh Breeze	Small trees begin to sway.
6	25-31	Strong Breeze	Large branches are in motion. Whistling is heard in overhead wires. Umbrella use is difficult.
7	32-38	Near Gale	Whole trees in motion. Some difficulty experienced walking into the wind.
8	39-46	Gale	Twigs and small branches break from trees. Cars veer on road.



Solid Fiberglass Poles

Pole End Caps

STREET POLE BANNER 36" X 60"

OUTDOOR BANNER STANDS

PRODUCT CODE: STB-36x60G



PRODUCT DESCRIPTION

Our Street Pole Banners are an effective way to display your message for street and sidewalk traffic to see. This is the perfect solution to promote street fairs, festivals, seasonal events, etc. Graphics are UV printed on double sided vinyl so your message will be visible from both sides. Pole pockets are sewn to the top and bottom of the banner and make for a quick and easy installation. Each Street Pole Banner hardware kit includes two mounting brackets, two fiberglass poles, four 304 stainless steel clamps, and is ready to display 1 double sided banner. If you would like to display more than 1 banner you can add multiple sets to the same street pole. The brackets are also drilled for screws if you want to attach the bracket to a wall instead of a street pole. Available in 3 pole widths: 24", 31.5" and 36" and 3 graphic heights: 36", 48", and 60". Compatible with round and square street poles 7.8" to 11.8" diameter.

GRAPHIC SIZE 36"W x 60"H

GRAPHIC MATERIAL

Double sided scrim vinyl

GRAPHIC FINISHING

2" Pole Pocket Top and Bottom

DISPLAY CONSTRUCTION

Cast aluminum brackets, with fiberglass poles and 304 stainless steel clamps

SHIPPING WEIGHTS & DIMENSIONS

Shipping Weight 9 lbs (stand only)
2 lbs (graphic only)
11 lbs (frame and graphic)

Shipping Dimensions 40.75" L x 3" W x 2.75" H

GRAPHIC TURN AROUND TIME

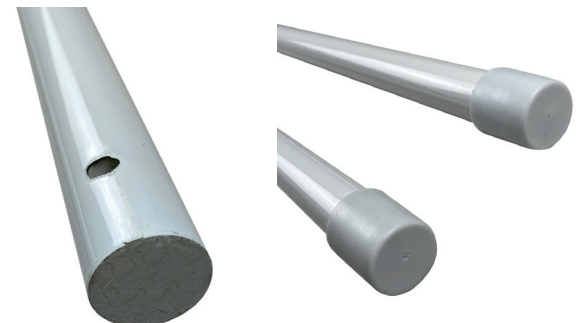
3 business days after proof approval for up to 10 sets

AVAILABILITY CA, PA, and PFC

MIN/MAX STREET POLE DIAMETER 7.8" Min 11.8" Max

BEAUFORT WIND SCALE RATING 4 to 5

Beaufort Number	Wind Speed (miles per hour)	Description	Wind Effects on Land
0	<1	Calm	Calm. Smoke rises vertically.
1	1-3	Light Air	Wind motion visible in smoke.
2	4-7	Light Breeze	Wind felt on exposed skin. Leaves rustle.
3	8-12	Gentle Breeze	Leaves and smaller twigs in constant motion.
4	13-18	Moderate Breeze	Dust and loose paper are raised. Small branches begin to move.
5	19-24	Fresh Breeze	Small trees begin to sway.
6	25-31	Strong Breeze	Large branches are in motion. Whistling is heard in overhead wires. Umbrella use is difficult.
7	32-38	Near Gale	Whole trees in motion. Some difficulty experienced walking into the wind.
8	39-46	Gale	Twigs and small branches break from trees. Cars veer on road.



Solid Fiberglass Poles

Pole End Caps



PARTS LIST



(qty 2)
Mounting Brackets
w/pins



(qty 4)
Stainless Steel Clamps
1m/39.4in Long



(qty 2)
Fiberglass Poles
(24" 31.5", and 36" Lengths)



TEMPLATE GUIDE

HOW TO SET UP POLE POCKET BLEED WITH IMAGE/NON SOLID BACKGROUND COLOR GRAPHICS



FRONT

BACK

YES

Image area on back graphic that's covered by pole pocket material is copied and pasted onto front and rotated 180° so image will line up with back graphic once folded over and sewn



NO

STREET POLE BANNER - 24"

OUTDOOR BANNER STANDS



On Frame



On Graphic



TEMPLATE

WE RECOMMEND SOLID COLOR FOR BLEED/POLE POCKET AREA
POLE POCKET - WILL BE PRINTED AND FOLDED OVER. WILL BE VISIBLE ON BACKSIDE

FOLD LINE
SEW LINE

POLE POCKET BLEED WILL COVER THIS AREA

PLEASE DELETE ALL TEMPLATE ELEMENTS BEFORE UPLOADING

**STREET POLE BANNER
24" X 36"
FRONT**

**UPLOAD AT 100% SCALE
DOCUMENT SIZE 49" x 41"**

YELLOW SAFE AREA: 22"W x 31" H

KEEP ALL IMPORTANT GRAPHICS
SUCH AS: LOGOS, TEXT, CONTACT INFO, ETC.
IN THE YELLOW SAFE ZONE

ARTWORK IN THE BLUE AREA WILL PRINT BUT IS IN RISK
OF BEING CLOSE TO THE EDGE OR TRIMMED OFF

Graphic Specifications:

- Create to template specs
- 125 DPI resolution
- CMYK color
- No template lines
- Embed/link all images
- Create to outline all fonts

Acceptable file formats:

- Photoshop (.psd, .psb)
- Illustrator (.ai, .eps)
- Flattened .tiff
- Press quality .pdf

FOLD LINE
SEW LINE

WE RECOMMEND SOLID COLOR FOR BLEED/POLE POCKET AREA
POLE POCKET - WILL BE PRINTED AND FOLDED OVER. WILL BE VISIBLE ON BACKSIDE

POLE POCKET BLEED WILL COVER THIS AREA

Ver-0929.22

WE RECOMMEND SOLID COLOR FOR BLEED/POLE POCKET AREA
POLE POCKET - WILL BE PRINTED AND FOLDED OVER. WILL BE VISIBLE ON BACKSIDE

FOLD LINE
SEW LINE

POLE POCKET BLEED WILL COVER THIS AREA

PLEASE DELETE ALL TEMPLATE ELEMENTS BEFORE UPLOADING

**STREET POLE BANNER
24" X 60"
FRONT**

**UPLOAD AT 100% SCALE
DOCUMENT SIZE 49" x 65"**

YELLOW SAFE AREA: 22"W x 55" H

KEEP ALL IMPORTANT GRAPHICS
SUCH AS: LOGOS, TEXT, CONTACT INFO, ETC.
IN THE YELLOW SAFE ZONE

ARTWORK IN THE BLUE AREA WILL PRINT BUT IS IN RISK
OF BEING CLOSE TO THE EDGE OR TRIMMED OFF

Graphic Specifications:

- Create to template specs
- 125 DPI resolution
- CMYK color
- No template lines
- Embed/link all images
- Create to outline all fonts

Acceptable file formats:

- Photoshop (.psd, .psb)
- Illustrator (.ai, .eps)
- Flattened .tiff
- Press quality .pdf

FOLD LINE
SEW LINE

WE RECOMMEND SOLID COLOR FOR BLEED/POLE POCKET AREA
POLE POCKET - WILL BE PRINTED AND FOLDED OVER. WILL BE VISIBLE ON BACKSIDE

POLE POCKET BLEED WILL COVER THIS AREA

Ver-0930.22

WE RECOMMEND SOLID COLOR FOR BLEED/POLE POCKET AREA
POLE POCKET - WILL BE PRINTED AND FOLDED OVER. WILL BE VISIBLE ON BACKSIDE

FOLD LINE
SEW LINE

POLE POCKET BLEED WILL COVER THIS AREA

PLEASE DELETE ALL TEMPLATE ELEMENTS BEFORE UPLOADING

**STREET POLE BANNER
24" X 48"
FRONT**

**UPLOAD AT 100% SCALE
DOCUMENT SIZE 49" x 53"**

YELLOW SAFE AREA: 22"W x 43" H

KEEP ALL IMPORTANT GRAPHICS
SUCH AS: LOGOS, TEXT, CONTACT INFO, ETC.
IN THE YELLOW SAFE ZONE

ARTWORK IN THE BLUE AREA WILL PRINT BUT IS IN RISK
OF BEING CLOSE TO THE EDGE OR TRIMMED OFF

Graphic Specifications:

- Create to template specs
- 125 DPI resolution
- CMYK color
- No template lines
- Embed/link all images
- Create to outline all fonts

Acceptable file formats:

- Photoshop (.psd, .psb)
- Illustrator (.ai, .eps)
- Flattened .tiff
- Press quality .pdf

FOLD LINE
SEW LINE

WE RECOMMEND SOLID COLOR FOR BLEED/POLE POCKET AREA
POLE POCKET - WILL BE PRINTED AND FOLDED OVER. WILL BE VISIBLE ON BACKSIDE

POLE POCKET BLEED WILL COVER THIS AREA

Ver-0930.22

STREET POLE BANNER - 31.5"

OUTDOOR BANNER STANDS



On Frame



On Graphic



TEMPLATE

WE RECOMMEND SOLID COLOR FOR BLEED/POLE POCKET AREA
POLE POCKET - WILL BE PRINTED AND FOLDED OVER. WILL BE VISIBLE ON BACKSIDE

SEW LINE
FOLD LINE

POLE POCKET BLEED WILL COVER THIS AREA

PLEASE DELETE ALL TEMPLATE ELEMENTS BEFORE UPLOADING

**STREET POLE BANNER
31.5" X 36"
FRONT**

**UPLOAD AT 100% SCALE
DOCUMENT SIZE 64" x 41"**

YELLOW SAFE AREA: 29.5"W x 31"H

KEEP ALL IMPORTANT GRAPHICS
SUCH AS LOGOS, TEXT, CONTACT INFO, ETC.
IN THE YELLOW SAFE ZONE

ARTWORK IN THE BLUE AREA WILL PRINT BUT IS AT RISK
OF BEING CLOSE TO THE EDGE OR TRIMMED OFF

Graphic Specifications:
- Create to template specs
- 125 DPI resolution
- CMYK color
- No template lines
- Embed/link all images
- Create to outline all fonts

Acceptable file formats:
- Photoshop (.psd, .psb)
- Illustrator (.ai, .eps)
- Flattened .tiff
- Press quality .pdf

FOLD LINE
SEW LINE

POLE POCKET BLEED WILL COVER THIS AREA

WE RECOMMEND SOLID COLOR FOR BLEED/POLE POCKET AREA
POLE POCKET - WILL BE PRINTED AND FOLDED OVER. WILL BE VISIBLE ON BACKSIDE

**STREET POLE BANNER
31.5" X 36"
BACK**

POLE POCKET BLEED WILL COVER THIS AREA

WE-005022

WE RECOMMEND SOLID COLOR FOR BLEED/POLE POCKET AREA
POLE POCKET - WILL BE PRINTED AND FOLDED OVER. WILL BE VISIBLE ON BACKSIDE

SEW LINE
FOLD LINE

POLE POCKET BLEED WILL COVER THIS AREA

PLEASE DELETE ALL TEMPLATE ELEMENTS BEFORE UPLOADING

**STREET POLE BANNER
31.5" X 60"
FRONT**

**UPLOAD AT 100% SCALE
DOCUMENT SIZE 64" x 65"**

YELLOW SAFE AREA: 29.5"W x 55"H

KEEP ALL IMPORTANT GRAPHICS
SUCH AS LOGOS, TEXT, CONTACT INFO, ETC.
IN THE YELLOW SAFE ZONE

ARTWORK IN THE BLUE AREA WILL PRINT BUT IS AT RISK
OF BEING CLOSE TO THE EDGE OR TRIMMED OFF

Graphic Specifications:
- Create to template specs
- 125 DPI resolution
- CMYK color
- No template lines
- Embed/link all images
- Create to outline all fonts

Acceptable file formats:
- Photoshop (.psd, .psb)
- Illustrator (.ai, .eps)
- Flattened .tiff
- Press quality .pdf

FOLD LINE
SEW LINE

POLE POCKET BLEED WILL COVER THIS AREA

WE RECOMMEND SOLID COLOR FOR BLEED/POLE POCKET AREA
POLE POCKET - WILL BE PRINTED AND FOLDED OVER. WILL BE VISIBLE ON BACKSIDE

**STREET POLE BANNER
31.5" X 60"
BACK**

POLE POCKET BLEED WILL COVER THIS AREA

WE-005022

WE RECOMMEND SOLID COLOR FOR BLEED/POLE POCKET AREA
POLE POCKET - WILL BE PRINTED AND FOLDED OVER. WILL BE VISIBLE ON BACKSIDE

SEW LINE
FOLD LINE

POLE POCKET BLEED WILL COVER THIS AREA

PLEASE DELETE ALL TEMPLATE ELEMENTS BEFORE UPLOADING

**STREET POLE BANNER
31.5" X 48"
FRONT**

**UPLOAD AT 100% SCALE
DOCUMENT SIZE 64" x 53"**

YELLOW SAFE AREA: 29.5"W x 43"H

KEEP ALL IMPORTANT GRAPHICS
SUCH AS LOGOS, TEXT, CONTACT INFO, ETC.
IN THE YELLOW SAFE ZONE

ARTWORK IN THE BLUE AREA WILL PRINT BUT IS AT RISK
OF BEING CLOSE TO THE EDGE OR TRIMMED OFF

Graphic Specifications:
- Create to template specs
- 125 DPI resolution
- CMYK color
- No template lines
- Embed/link all images
- Create to outline all fonts

Acceptable file formats:
- Photoshop (.psd, .psb)
- Illustrator (.ai, .eps)
- Flattened .tiff
- Press quality .pdf

FOLD LINE
SEW LINE

POLE POCKET BLEED WILL COVER THIS AREA

WE RECOMMEND SOLID COLOR FOR BLEED/POLE POCKET AREA
POLE POCKET - WILL BE PRINTED AND FOLDED OVER. WILL BE VISIBLE ON BACKSIDE

**STREET POLE BANNER
31.5" X 48"
BACK**

POLE POCKET BLEED WILL COVER THIS AREA

WE-005022

STREET POLE BANNER - 36"

OUTDOOR BANNER STANDS



TEMPLATE

WE RECOMMEND SOLID COLOR FOR BLEED/POLE POCKET AREA
POLE POCKET - WILL BE PRINTED AND FOLDED OVER. WILL BE VISIBLE ON BACKSIDE

FOLD LINE

POLE POCKET BLEED WILL COVER THIS AREA

PLEASE DELETE ALL TEMPLATE ELEMENTS BEFORE UPLOADING

STREET POLE BANNER
36" X 36"
FRONT
UPLOAD AT 100% SCALE
DOCUMENT SIZE 73" X 41"

YELLOW SAFE AREA: 34" W x 31" H

KEEP ALL IMPORTANT GRAPHICS SUCH AS LOGOS, TEXT, CONTACT INFO, ETC. IN THE YELLOW SAFE ZONE

ARTWORK IN THE BLUE AREA WILL PRINT BUT IS IN RISK OF BEING CLOSE TO THE EDGE OR TRIMMED OFF

Graphic Specifications:

- Create to template specs
- 125 DPI resolution
- CMYK color
- No template lines
- Embed/link all images
- Create to outline all fonts

Acceptable file formats:

- Photoshop (.psd, .psb)
- Illustrator (.ai, .eps)
- Flattened .tiff
- Press quality .pdf

SEW LINE

WE RECOMMEND SOLID COLOR FOR BLEED/POLE POCKET AREA
POLE POCKET - WILL BE PRINTED AND FOLDED OVER. WILL BE VISIBLE ON BACKSIDE

www.99ac.com

WE RECOMMEND SOLID COLOR FOR BLEED/POLE POCKET AREA
POLE POCKET - WILL BE PRINTED AND FOLDED OVER. WILL BE VISIBLE ON BACKSIDE

FOLD LINE

POLE POCKET BLEED WILL COVER THIS AREA

PLEASE DELETE ALL TEMPLATE ELEMENTS BEFORE UPLOADING

STREET POLE BANNER
36" X 60"
FRONT
UPLOAD AT 100% SCALE
DOCUMENT SIZE 73" X 65"

YELLOW SAFE AREA: 34" W x 53" H

KEEP ALL IMPORTANT GRAPHICS SUCH AS LOGOS, TEXT, CONTACT INFO, ETC. IN THE YELLOW SAFE ZONE

ARTWORK IN THE BLUE AREA WILL PRINT BUT IS IN RISK OF BEING CLOSE TO THE EDGE OR TRIMMED OFF

Graphic Specifications:

- Create to template specs
- 125 DPI resolution
- CMYK color
- No template lines
- Embed/link all images
- Create to outline all fonts

Acceptable file formats:

- Photoshop (.psd, .psb)
- Illustrator (.ai, .eps)
- Flattened .tiff
- Press quality .pdf

SEW LINE

WE RECOMMEND SOLID COLOR FOR BLEED/POLE POCKET AREA
POLE POCKET - WILL BE PRINTED AND FOLDED OVER. WILL BE VISIBLE ON BACKSIDE

www.99ac.com

WE RECOMMEND SOLID COLOR FOR BLEED/POLE POCKET AREA
POLE POCKET - WILL BE PRINTED AND FOLDED OVER. WILL BE VISIBLE ON BACKSIDE

FOLD LINE

POLE POCKET BLEED WILL COVER THIS AREA

PLEASE DELETE ALL TEMPLATE ELEMENTS BEFORE UPLOADING

STREET POLE BANNER
36" X 48"
FRONT
UPLOAD AT 100% SCALE
DOCUMENT SIZE 73" X 53"

YELLOW SAFE AREA: 34" W x 41" H

KEEP ALL IMPORTANT GRAPHICS SUCH AS LOGOS, TEXT, CONTACT INFO, ETC. IN THE YELLOW SAFE ZONE

ARTWORK IN THE BLUE AREA WILL PRINT BUT IS IN RISK OF BEING CLOSE TO THE EDGE OR TRIMMED OFF

Graphic Specifications:

- Create to template specs
- 125 DPI resolution
- CMYK color
- No template lines
- Embed/link all images
- Create to outline all fonts

Acceptable file formats:

- Photoshop (.psd, .psb)
- Illustrator (.ai, .eps)
- Flattened .tiff
- Press quality .pdf

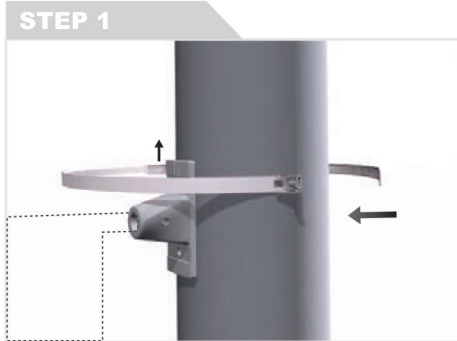
SEW LINE

WE RECOMMEND SOLID COLOR FOR BLEED/POLE POCKET AREA
POLE POCKET - WILL BE PRINTED AND FOLDED OVER. WILL BE VISIBLE ON BACKSIDE

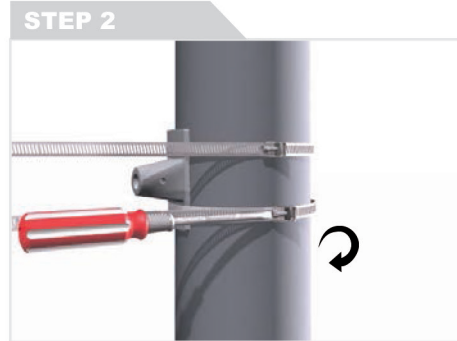
www.99ac.com



SET UP INSTRUCTIONS (ALL SIZES)



STEP 1
Place brackets on street pole & secure with stainless steel clamps (2pc clamp per bracket)



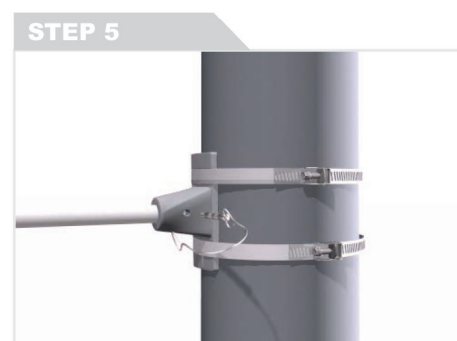
STEP 2
Tighten clamps with screwdriver or an electric drill with a screwdriver bit for quicker install



STEP 3
Insert poles through pole pockets of graphic



STEP 4
Insert poles into holes on bracket (bracket position may need adjustment)



STEP 5
Insert pin to lock poles into place