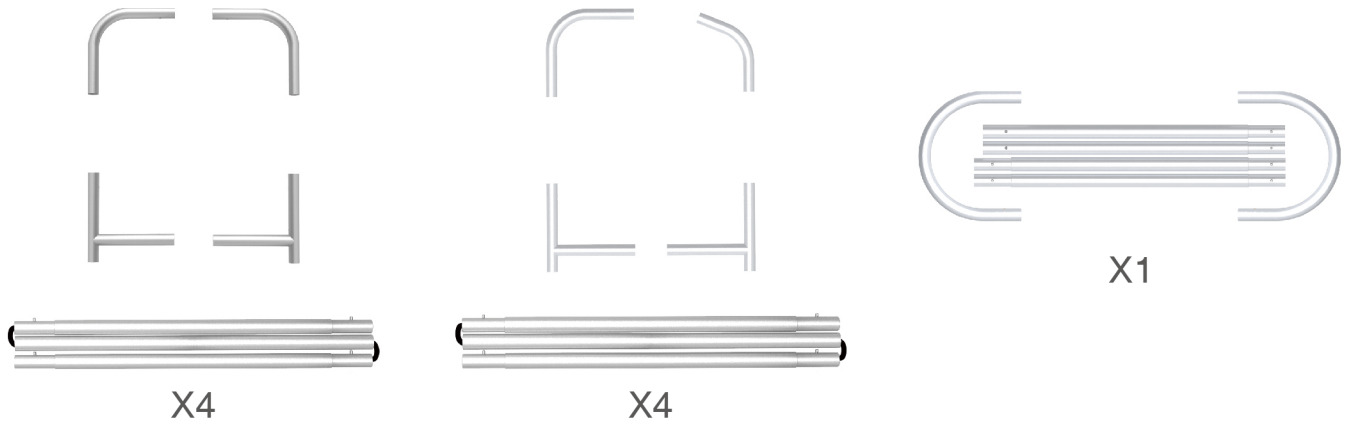


PARTS

(1) Hardware

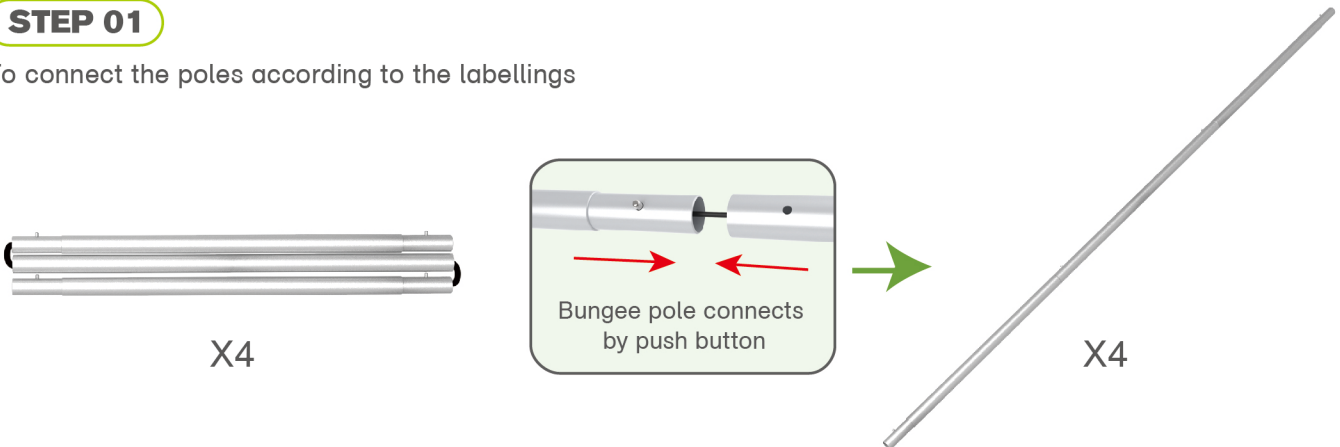


(2) Graphic printing fabric banner



STEP 01

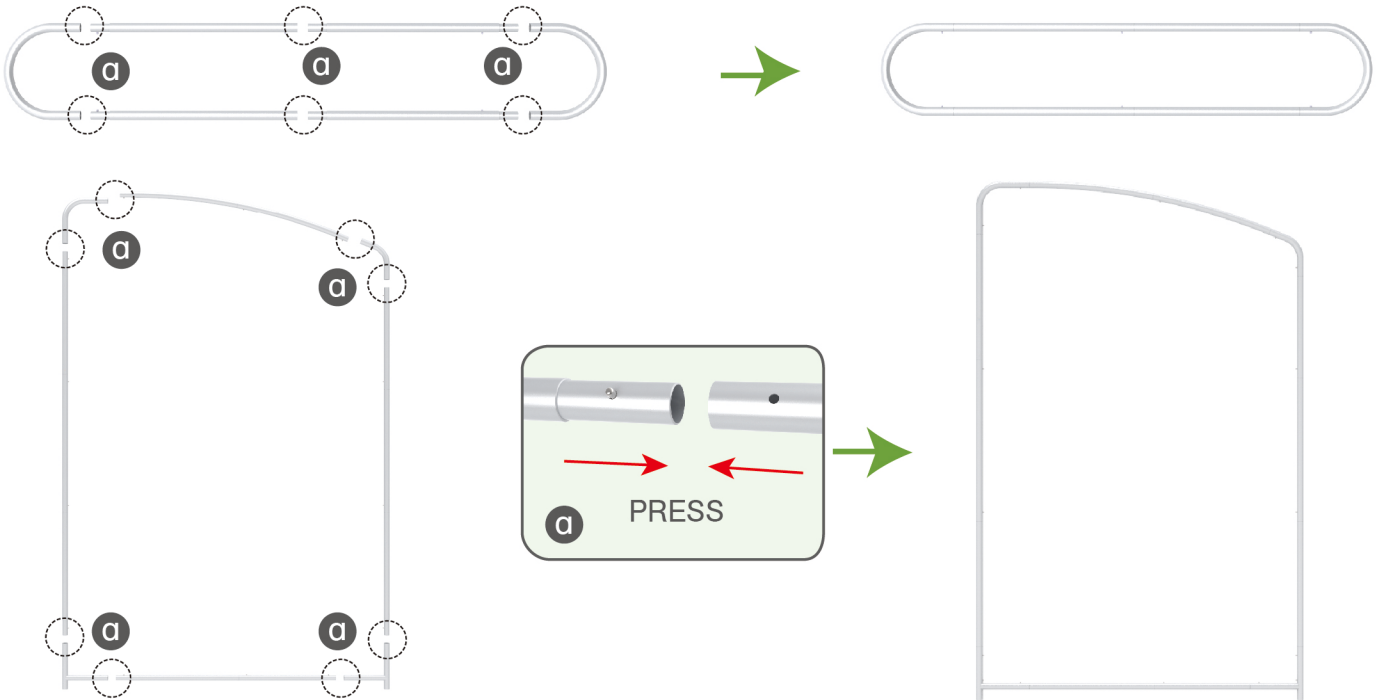
To connect the poles according to the labellings



PARTS

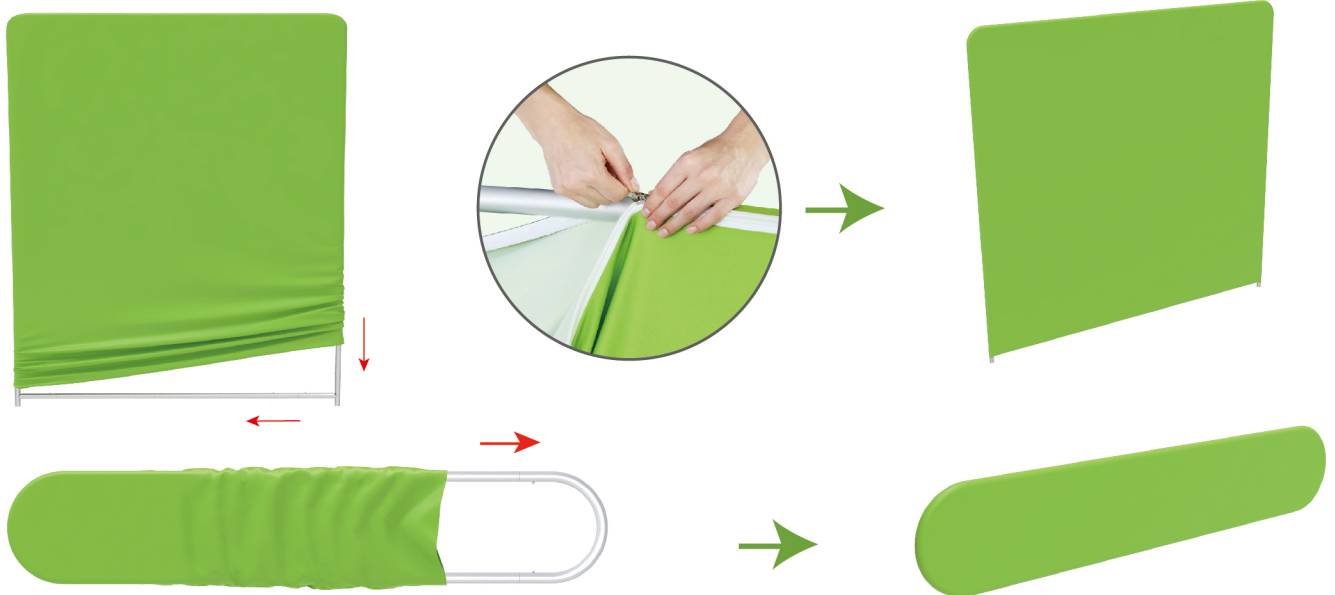
STEP 02

To connect long poles by corner pieces according to the labellings



STEP 03

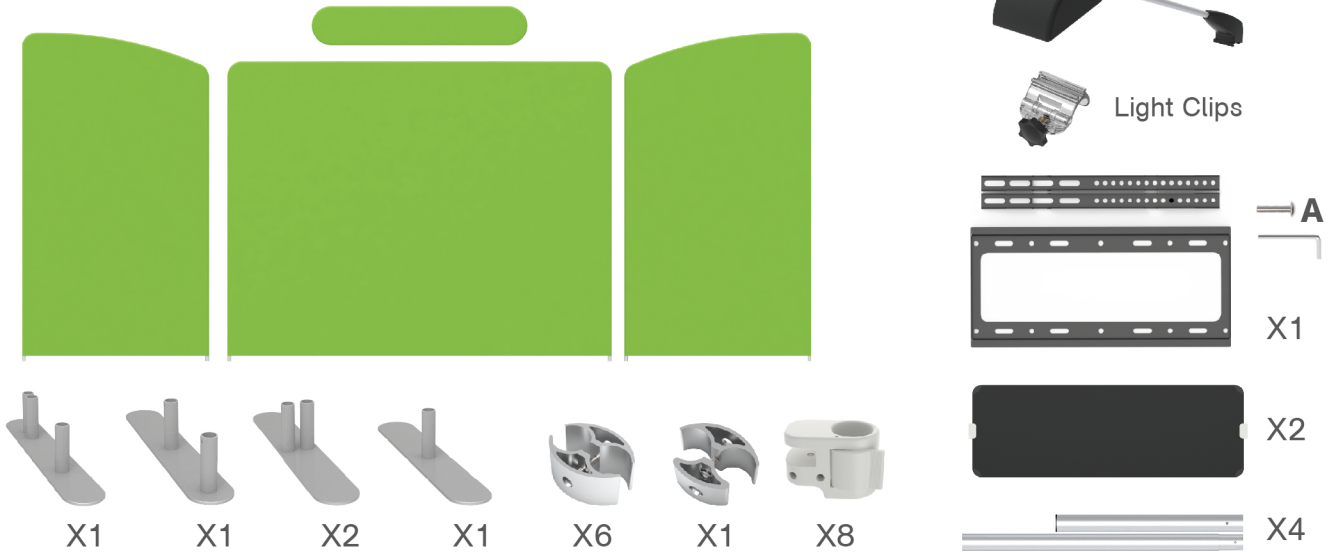
To slide the fabric banner on the frame from top and zip up at bottom



Same Steps for the rest back walls

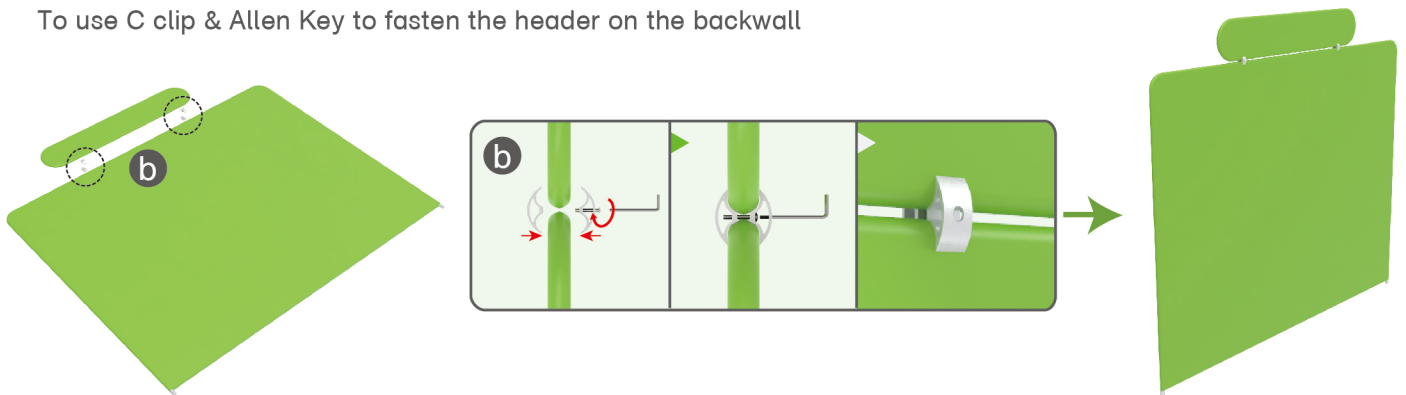
PARTS

Booth Set Assembly



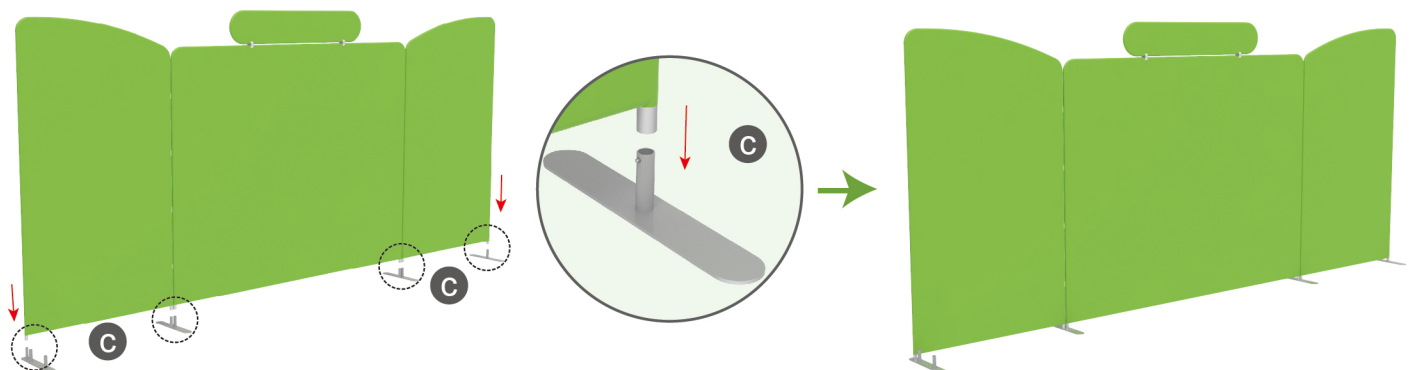
STEP 01

To use C clip & Allen Key to fasten the header on the backwall



STEP 02

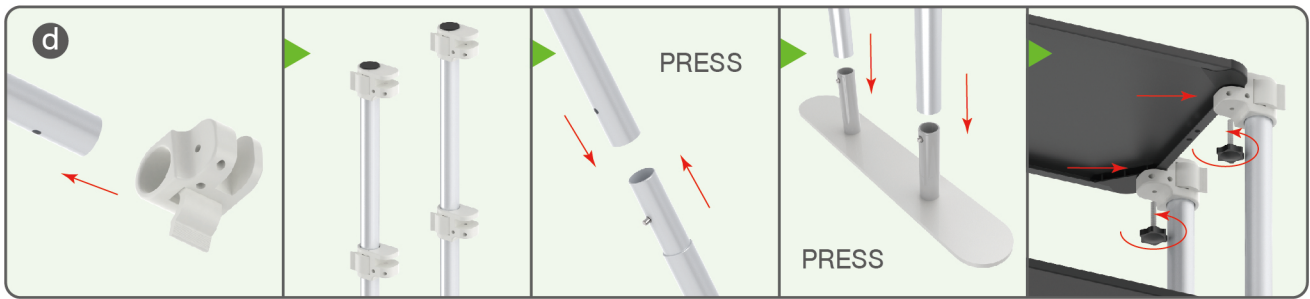
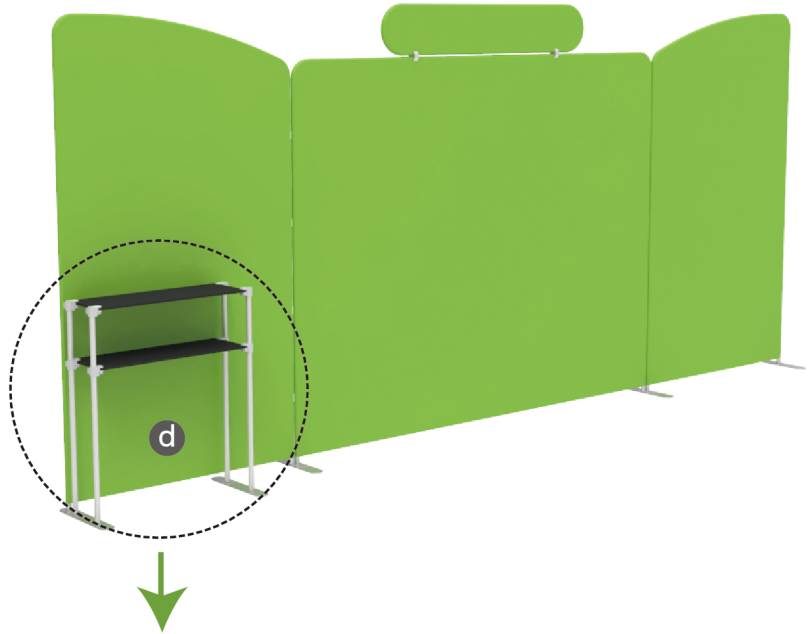
To install the "double-head" feet in position to make backwalls stand together



PARTS

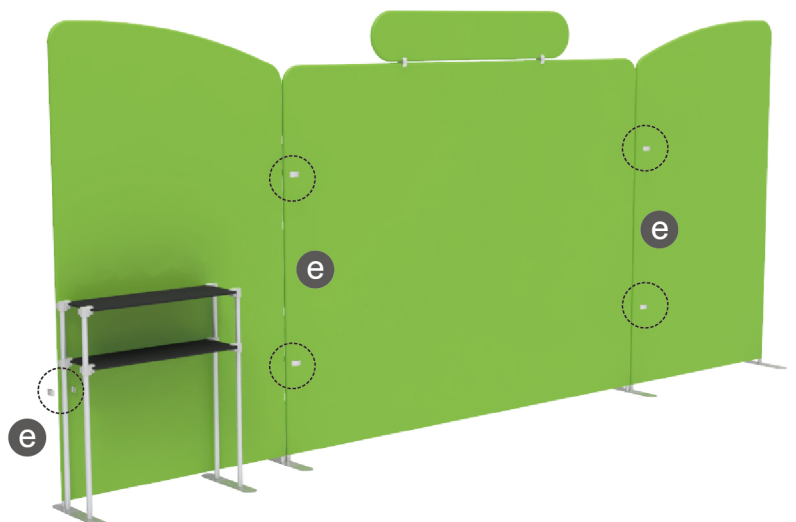
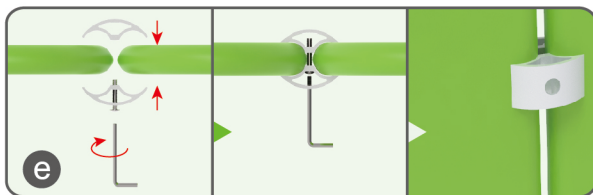
STEP 03

To install the shelves in position



STEP 04

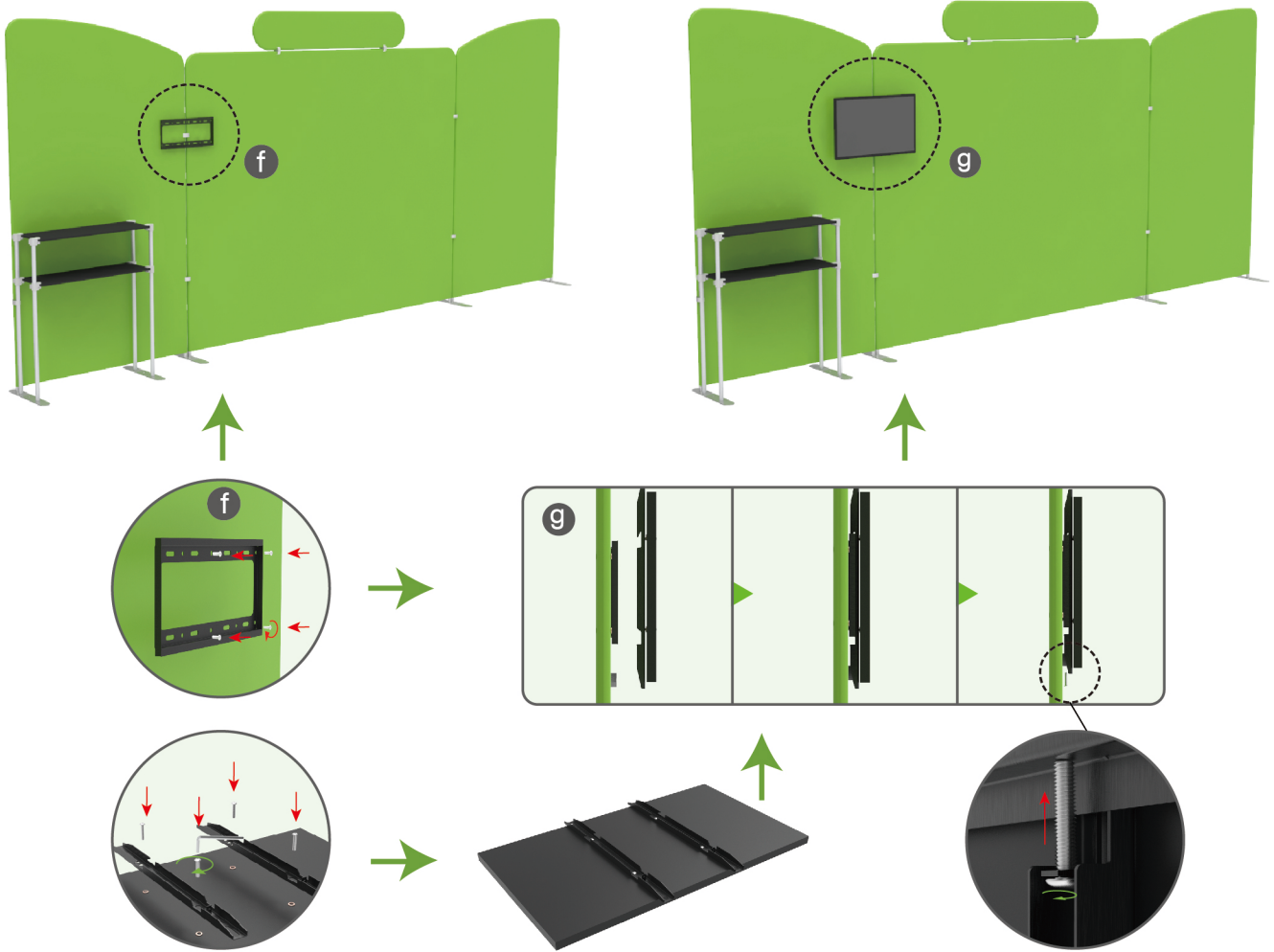
To put the C clip into the gap between backwalls and fasten by screws



PARTS

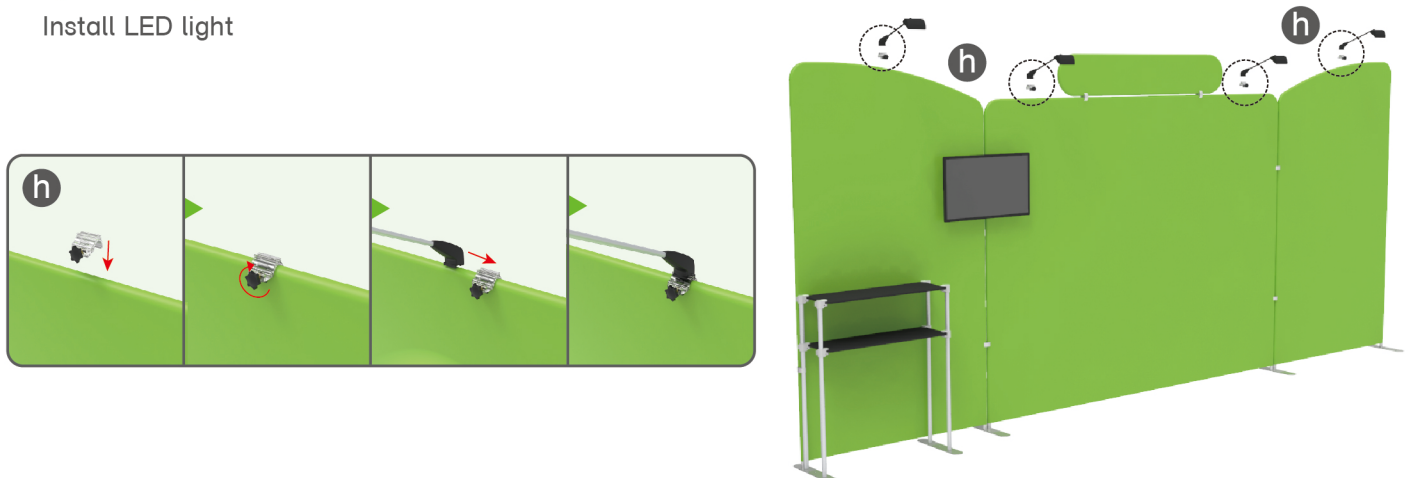
STEP 05

To install the TV mount in position



STEP 06

Install LED light



PARTS

SAME STEPS FOR 10X20ft Booth-K



10X20ft-Booth-H



10X20ft-Booth-K