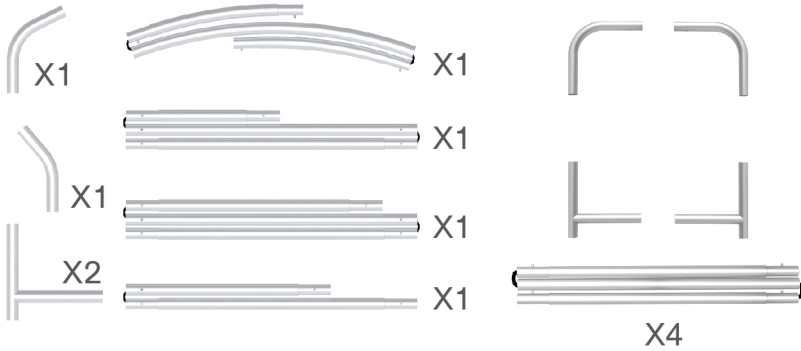


PARTS

(1) Hardware

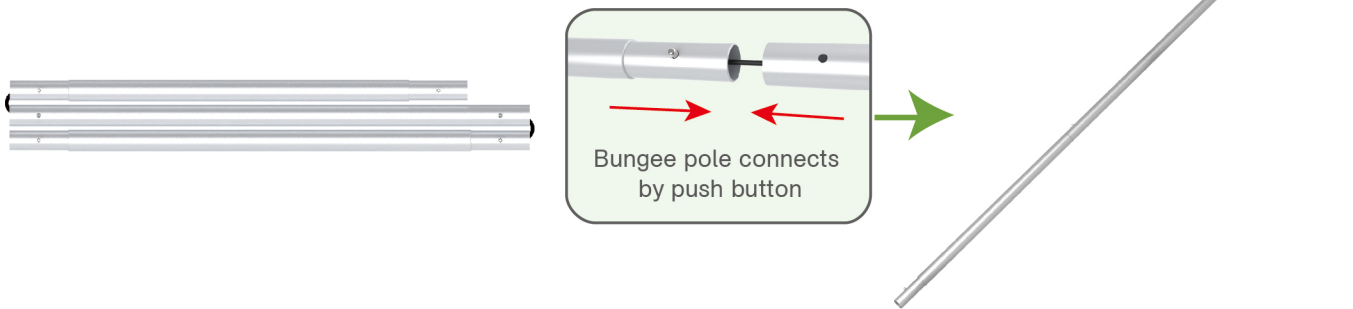


(2) Graphic printing fabric banner



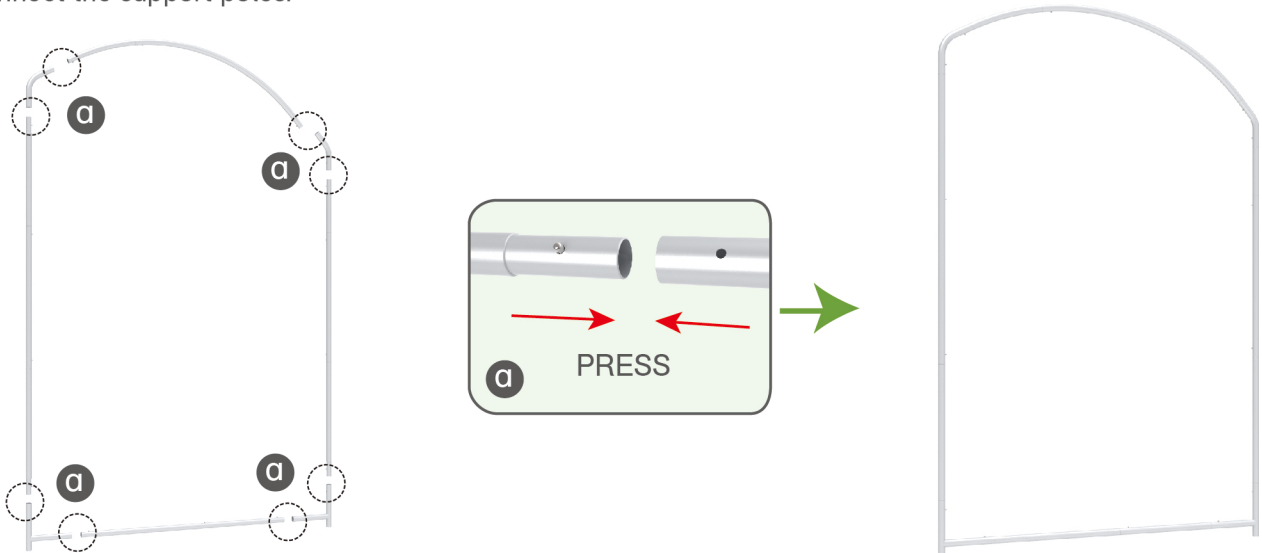
STEP 01

To connect the poles according to the labellings



STEP 02

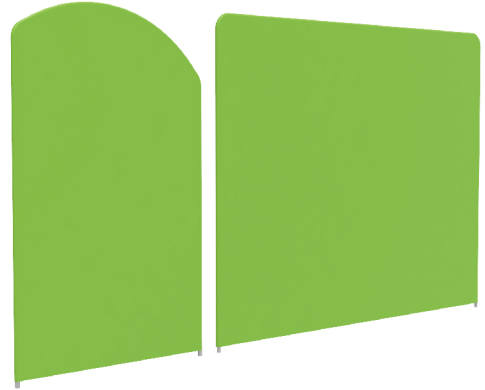
Connect the support poles.



PARTS

STEP 03

To slide the fabric banner on the frame from top and zip up at bottom



Same Steps for the rest back walls

Booth Set Assembly



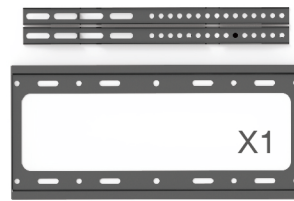
LED Light



Light Clips



X4



X1

⇒ A



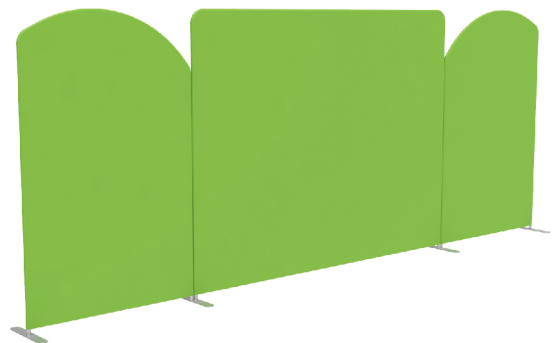
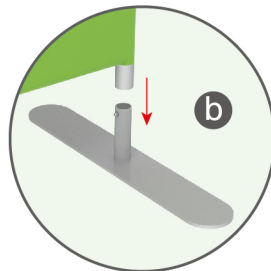
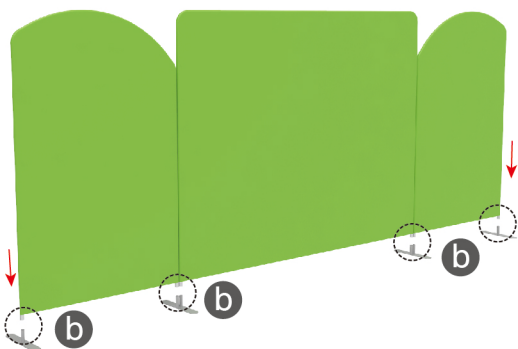
X2



X2

STEP 01

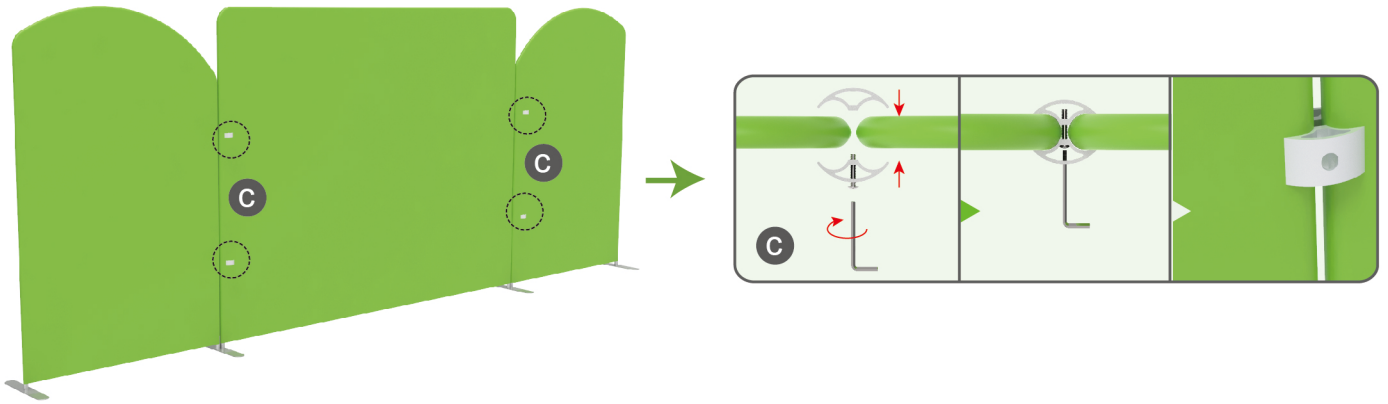
To assemble the stand feet in position



PARTS

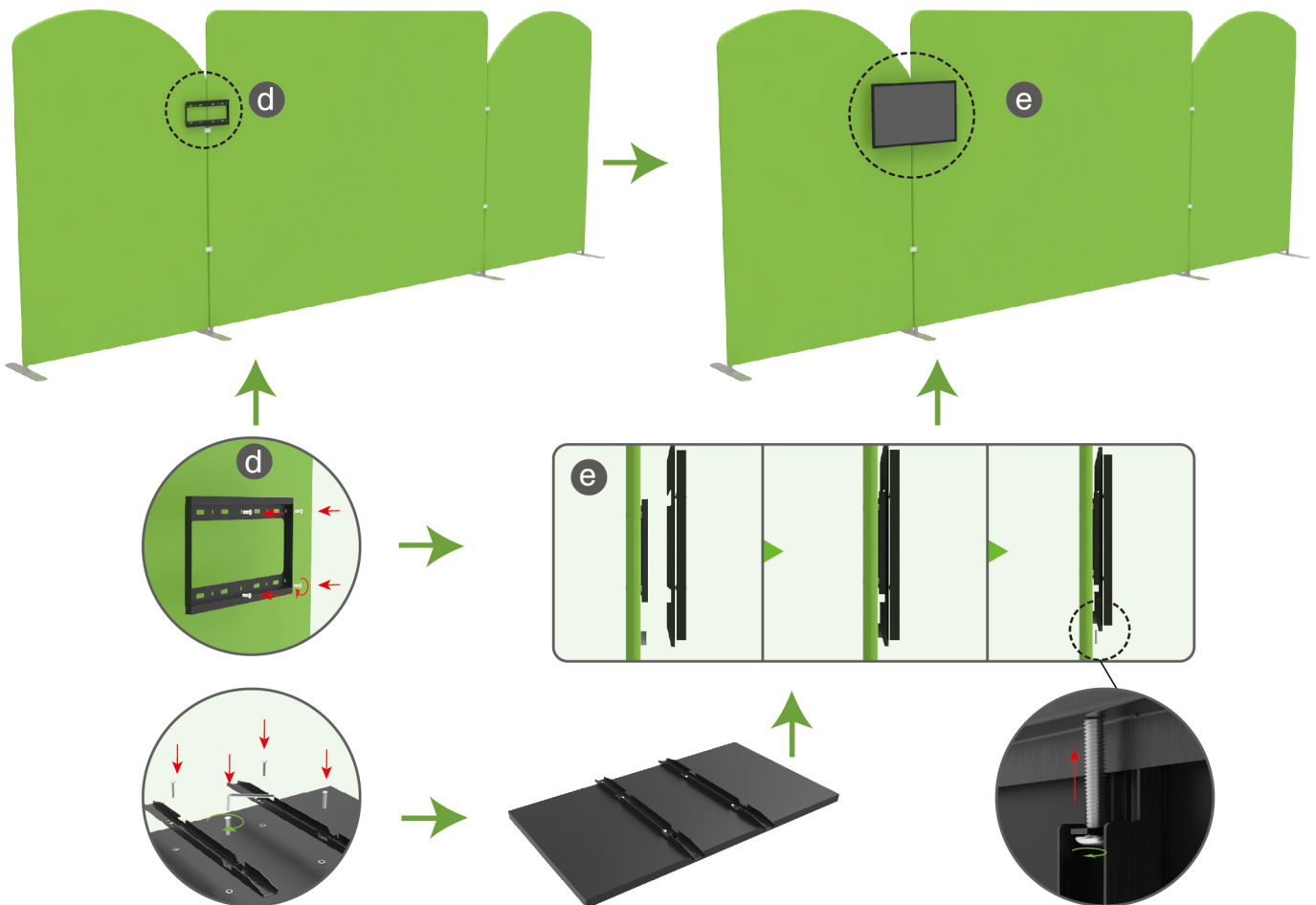
STEP 02

To use C clip to connect 2 display stand perfectly



STEP 03

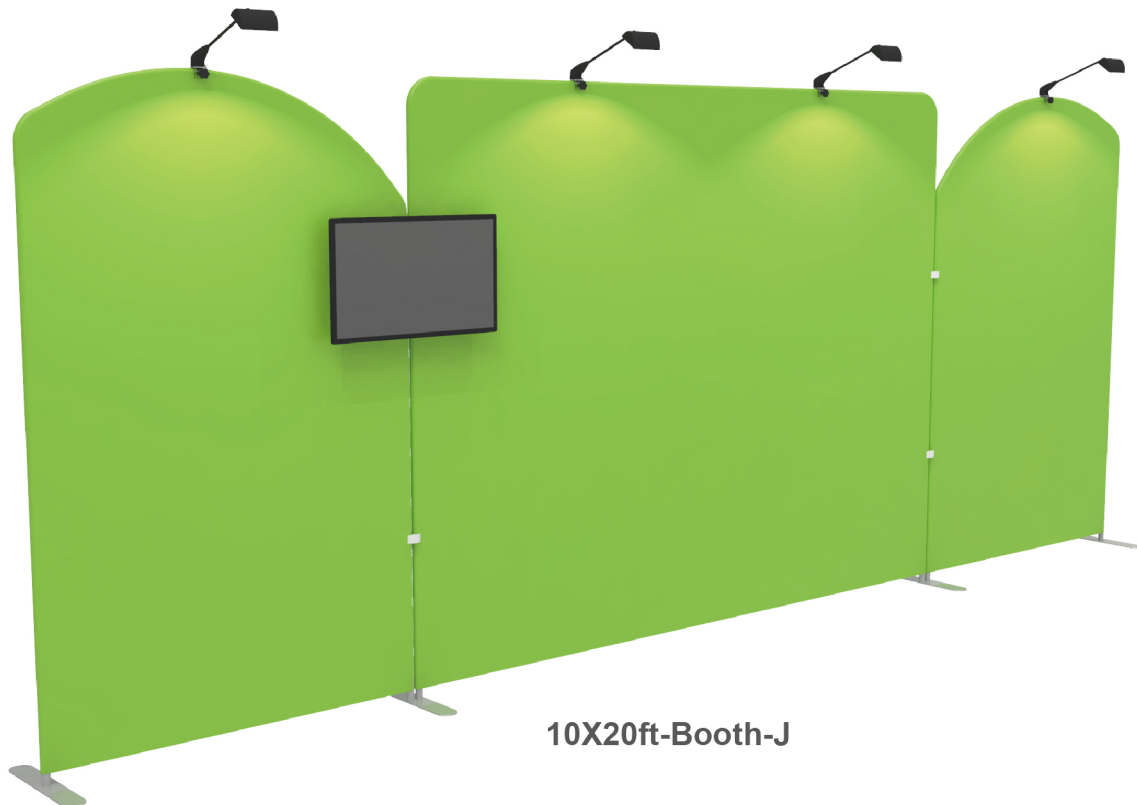
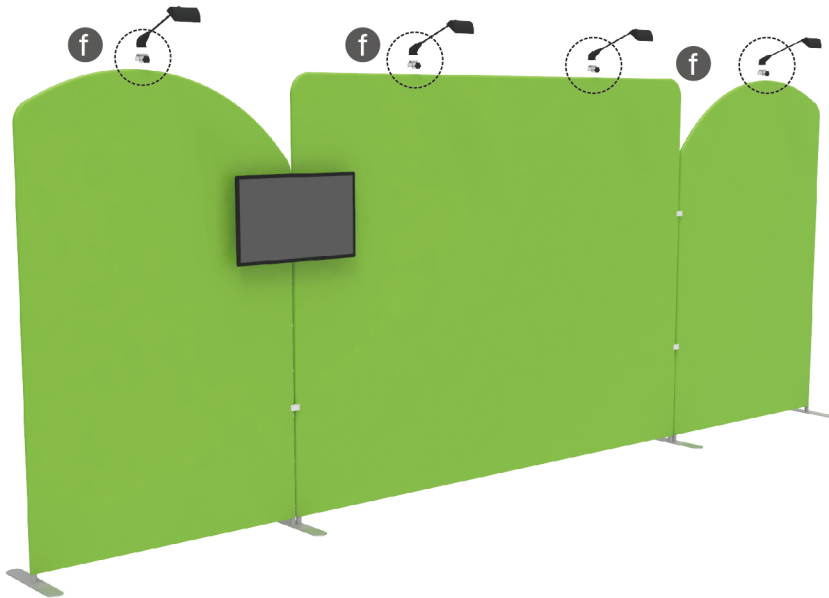
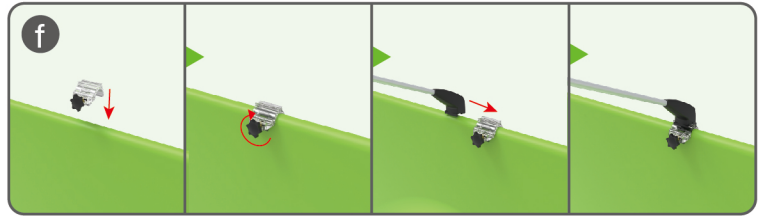
To install the TV mount in position



PARTS

STEP 04

Install LED light



10X20ft-Booth-J