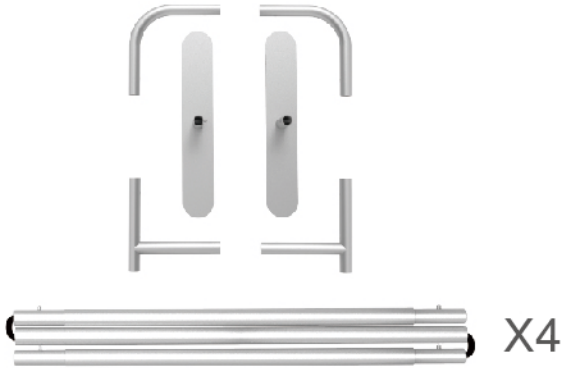


PARTS

(1) Hardware

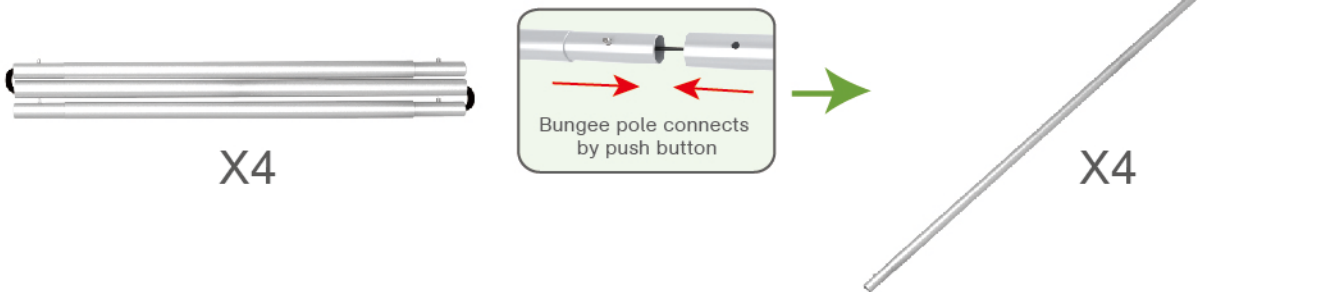


(2) Graphic printing fabric banner



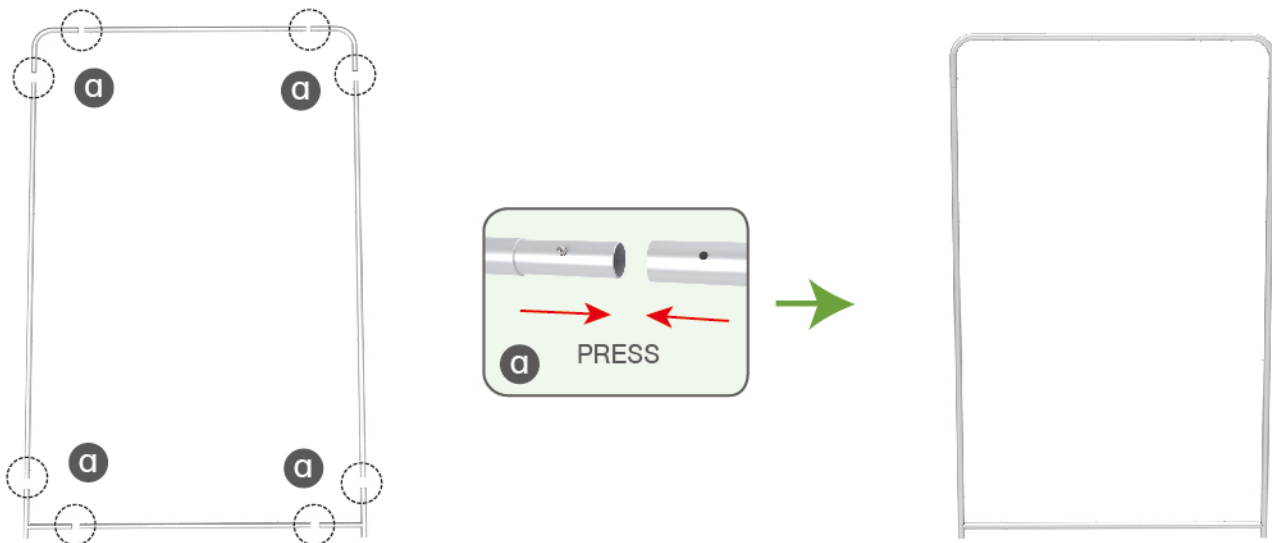
STEP 01

To connect the poles according to the labellings



STEP 02

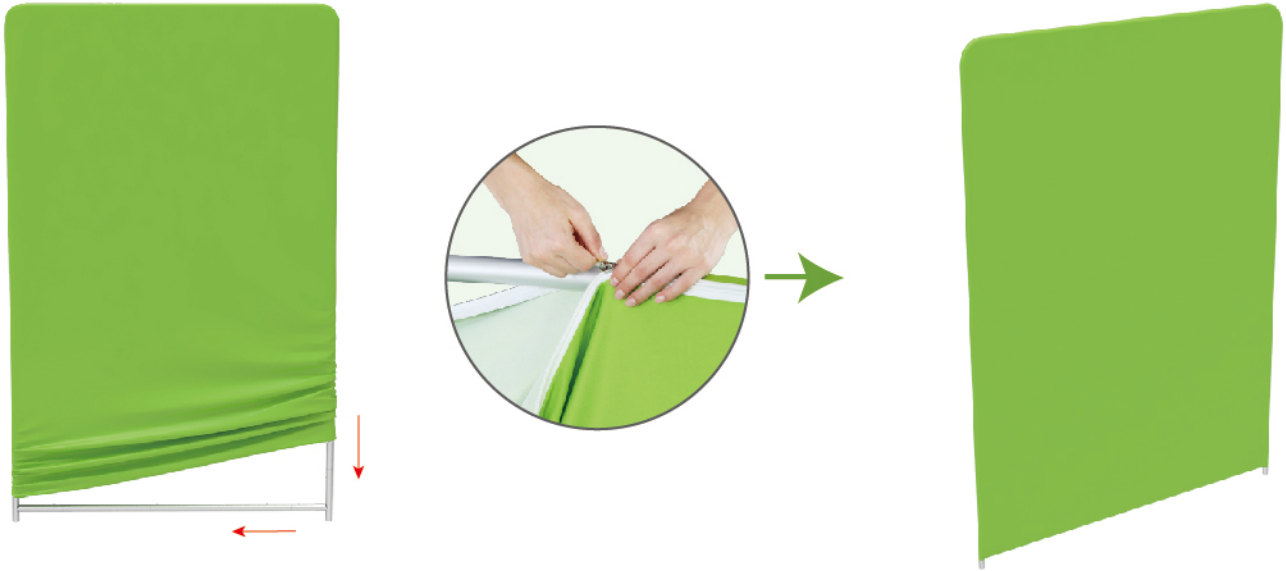
To use corner pieces to connect the poles to be display stand



PARTS

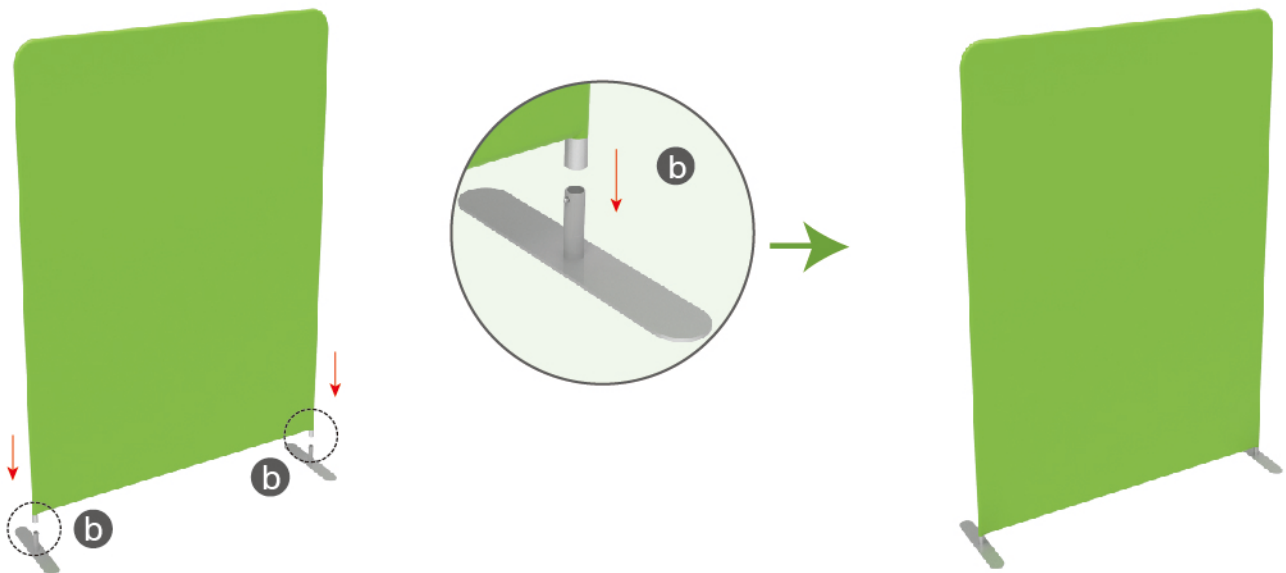
STEP 03

To slide the fabric banner on the frame from top and zip up at bottom



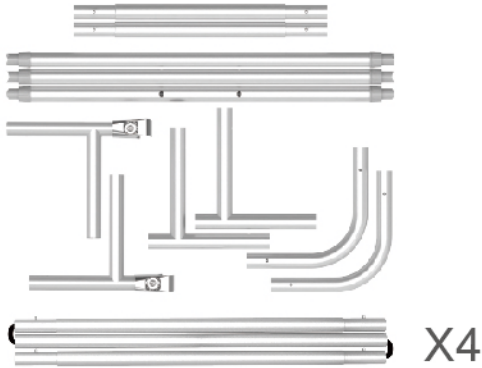
STEP 04

To assemble the stand feet in position



PARTS

(1) Hardware

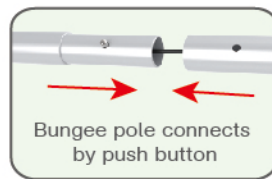


(2) Graphic printing fabric banner



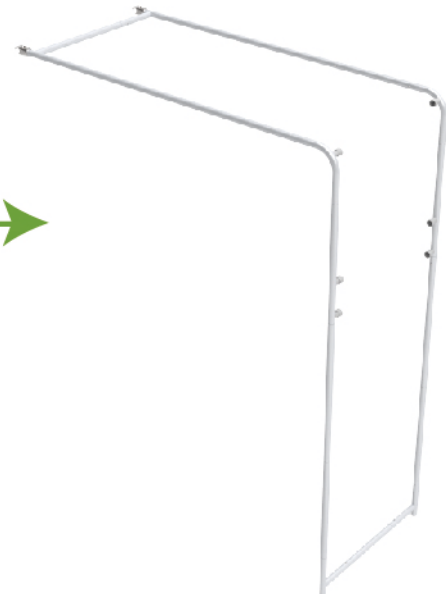
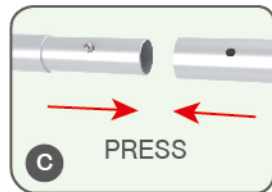
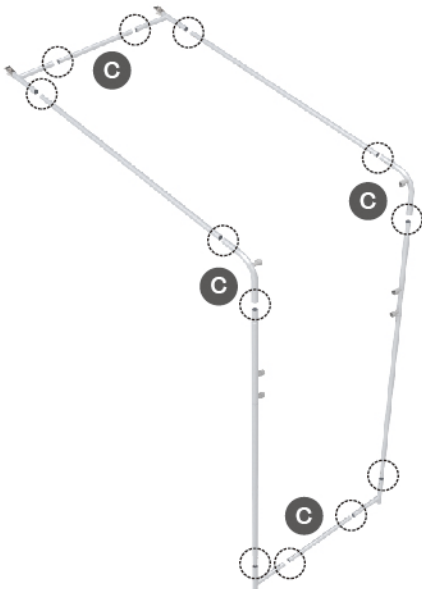
STEP 01

To connect the poles according to the labellings



STEP 02

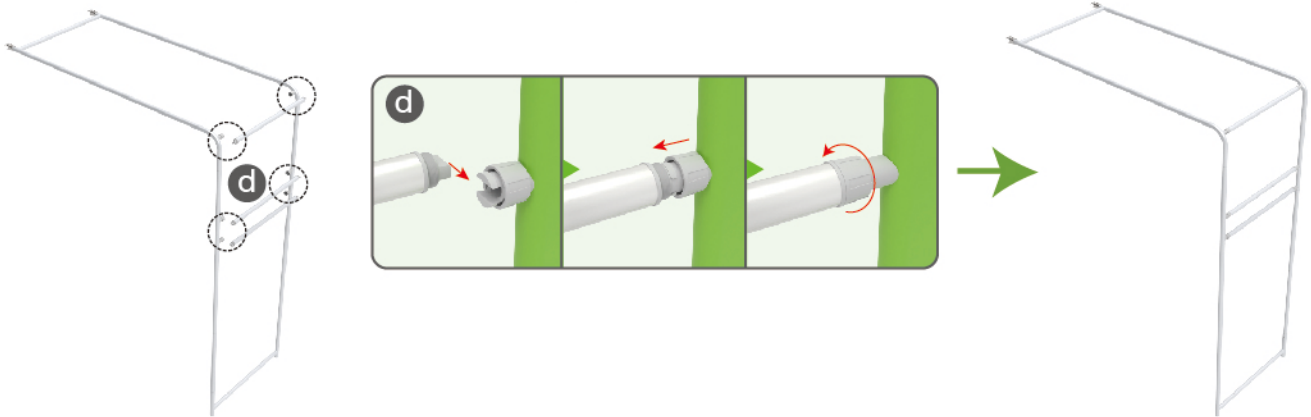
To use corner pieces to connect the poles to be display stand



PARTS

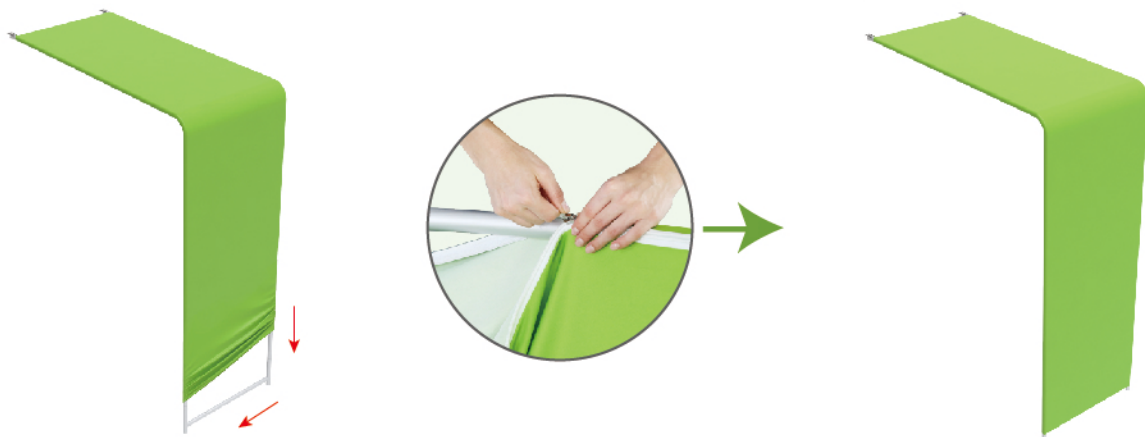
STEP 03

To install the cross bar according to the labellings



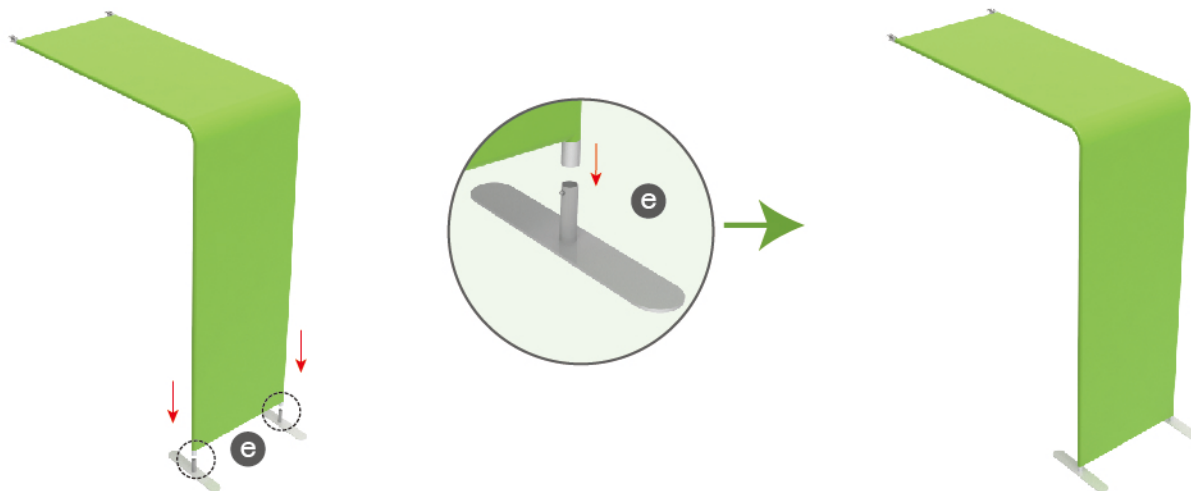
STEP 04

To lie down the stand and wrap the fabric banner from side to sides and zip up



STEP 05

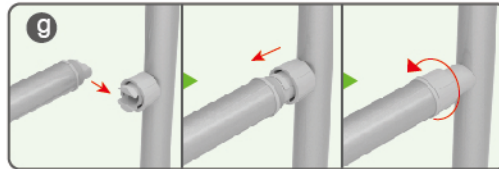
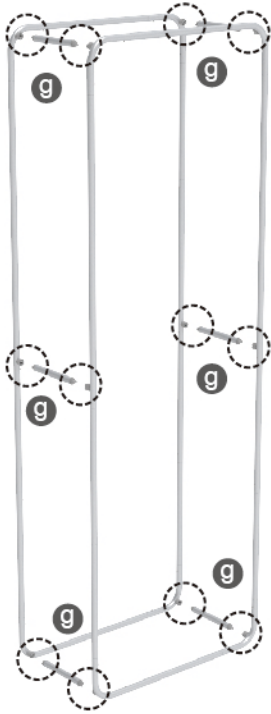
To assemble the feet in position



PARTS

STEP 03

To install the cross bar according to the labellings



STEP 04

To lie down the stand and wrap the fabric banner from side to sides and zip up



PARTS

(1) Hardware

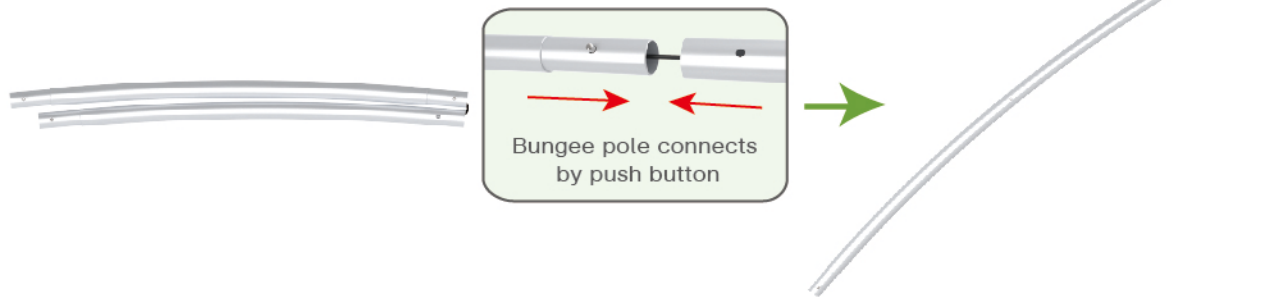


(2) Graphic printing fabric banner



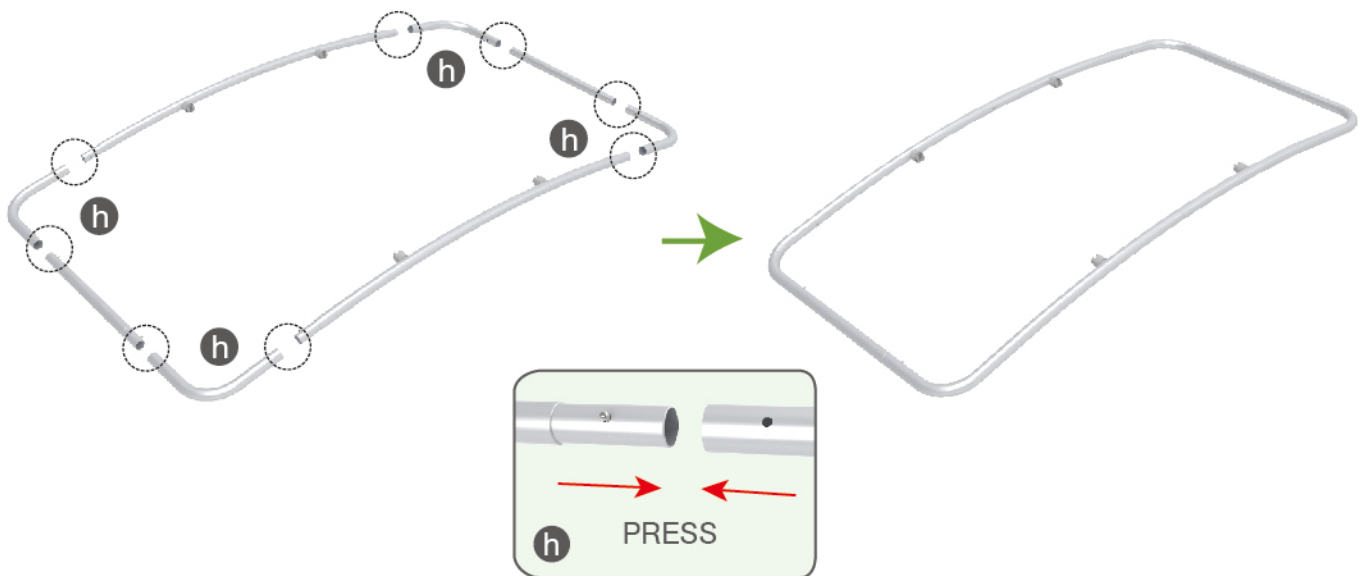
STEP 01

To connect the poles according to the labellings



STEP 02

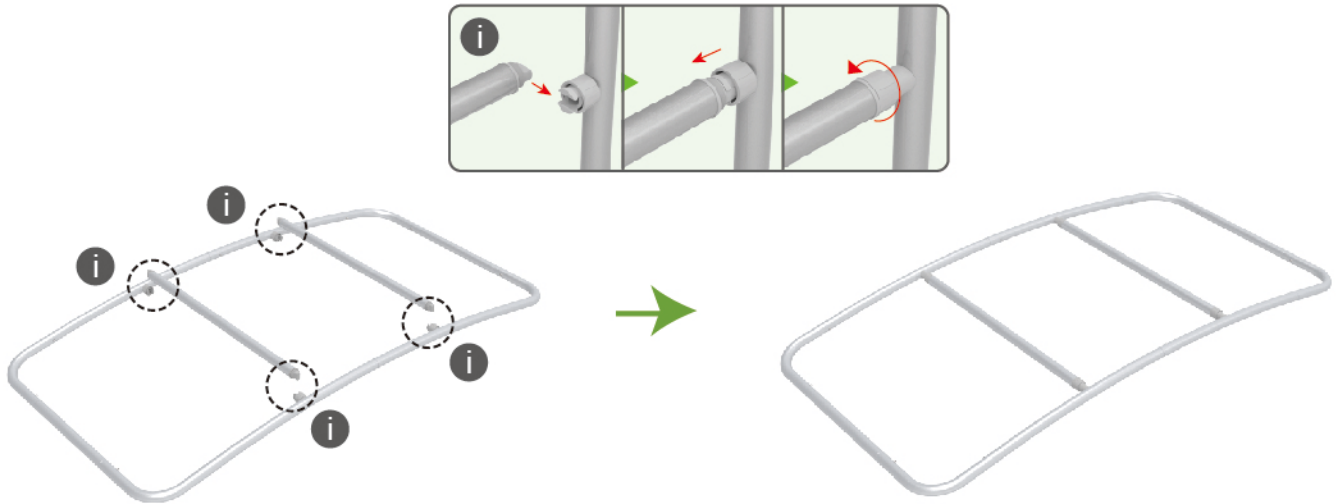
To use corner pieces to connect the poles to be display stand



PARTS

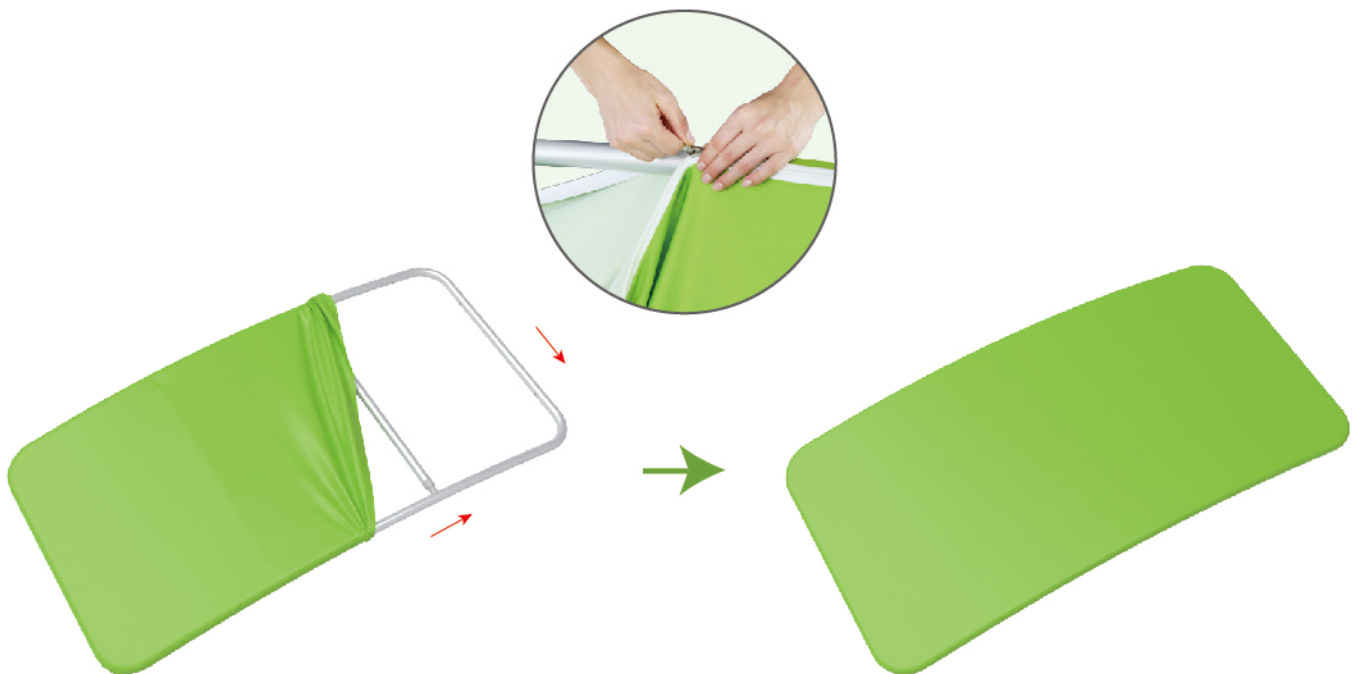
STEP 03

To install the cross bar according to the labellings



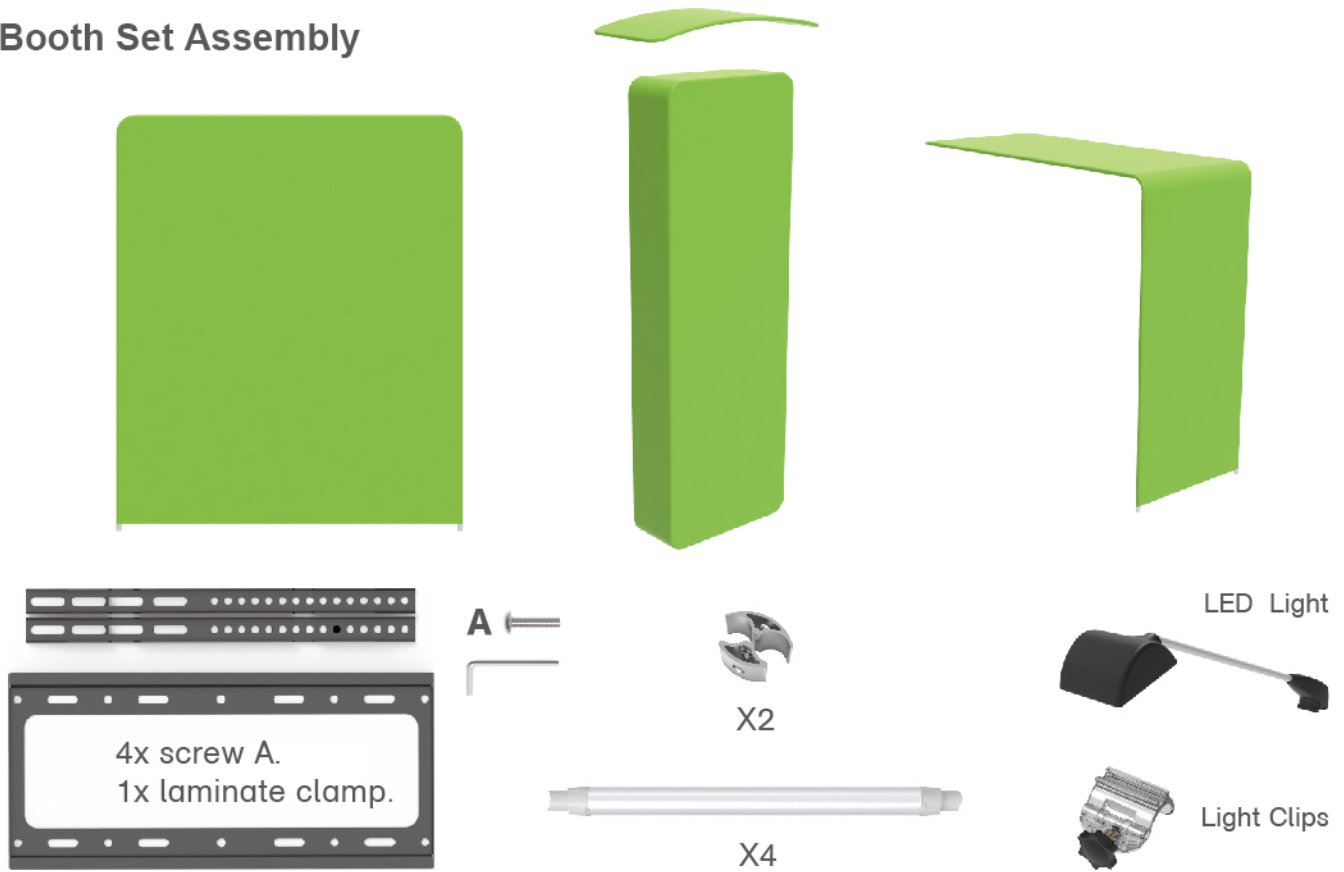
STEP 04

To slide over the fabric banner from side to sides and zip up



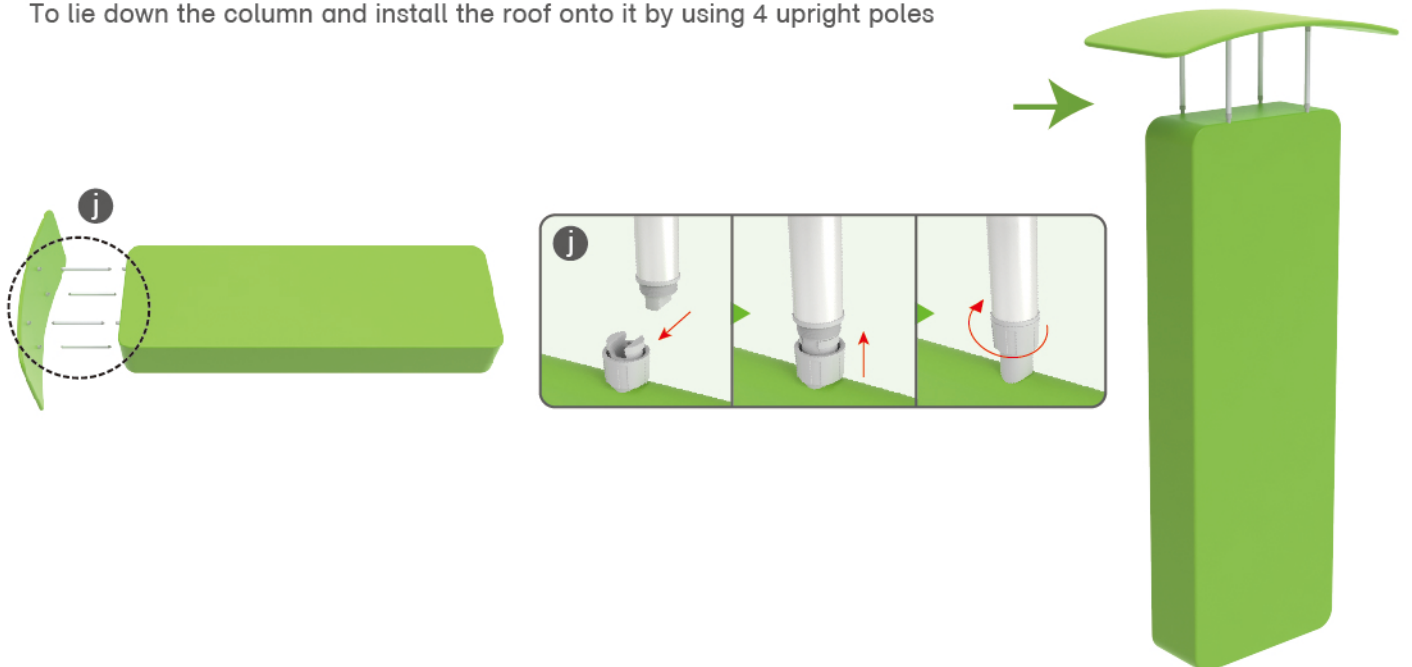
PARTS

Booth Set Assembly



STEP 01

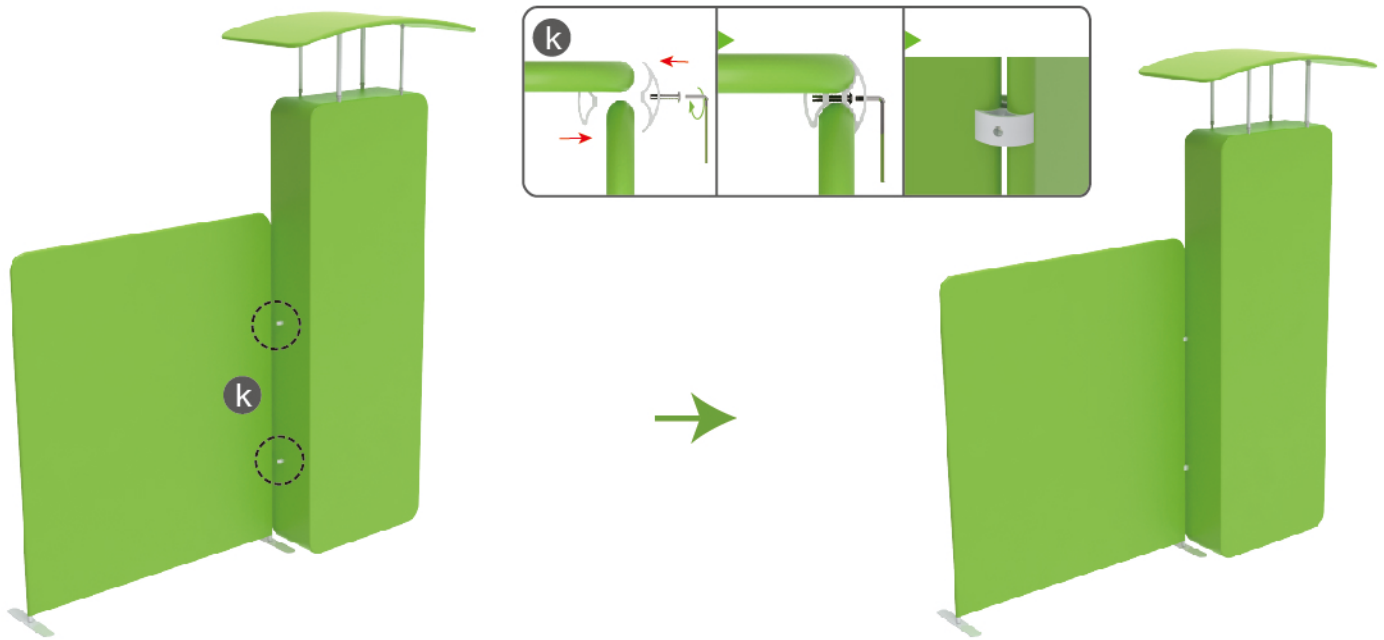
To lie down the column and install the roof onto it by using 4 upright poles



PARTS

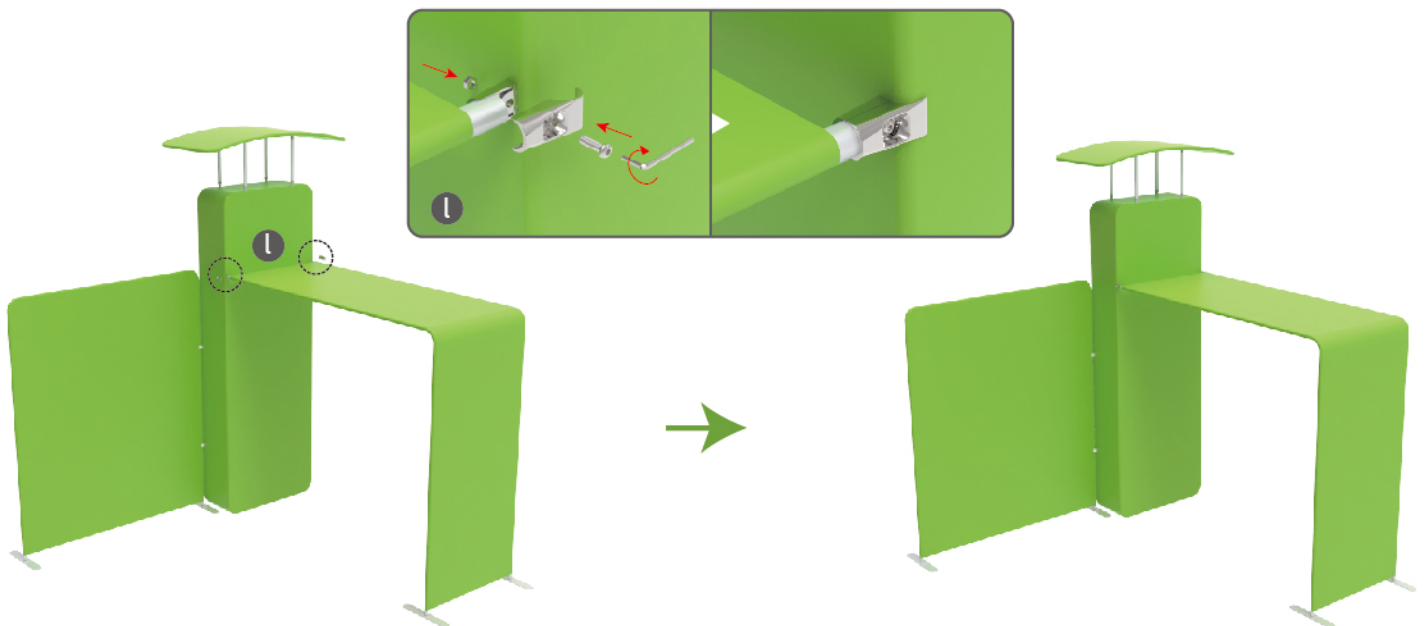
STEP 02

To use C clip to connect the backwall with the column perfectly



STEP 03

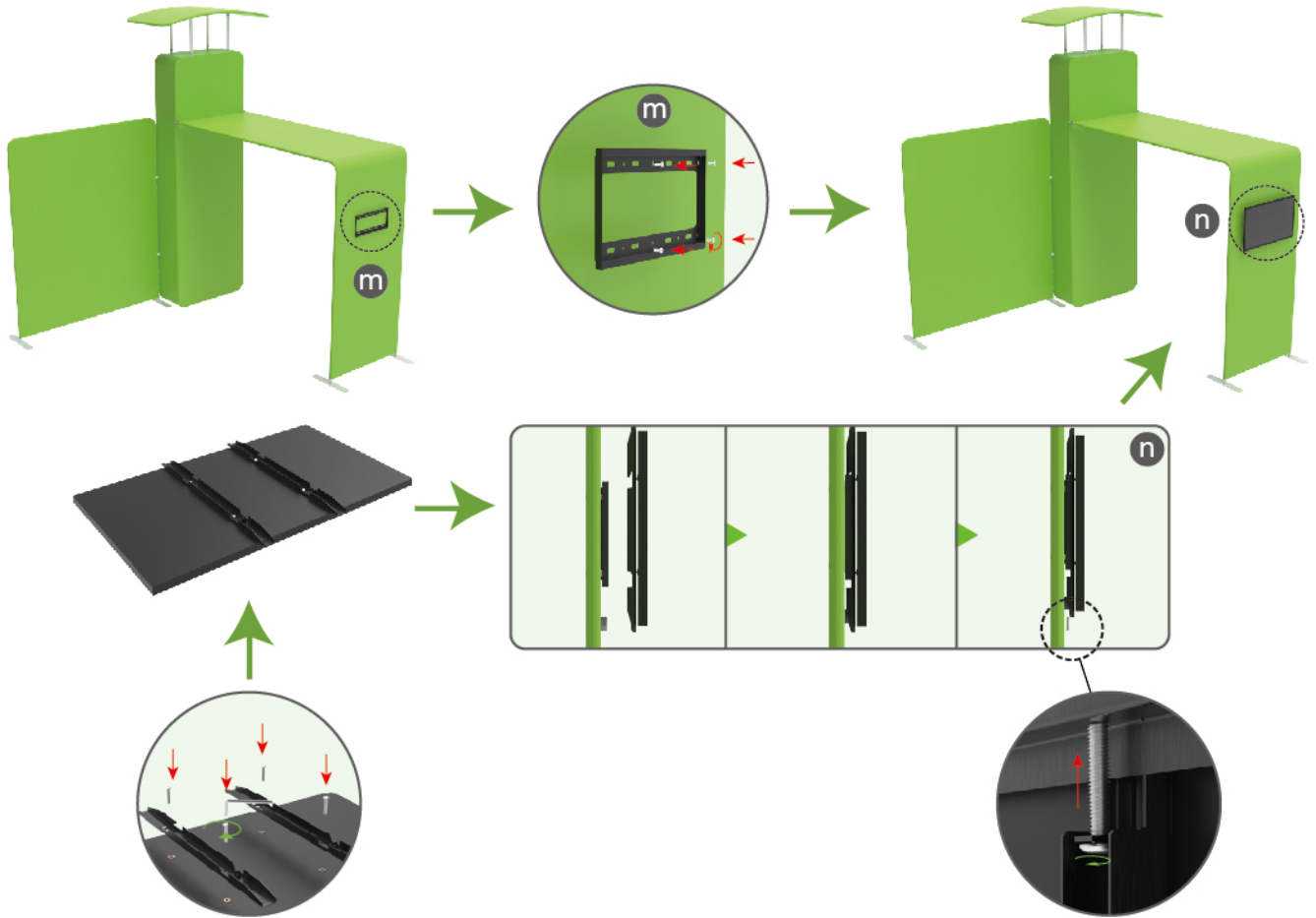
To use the clamp to install the arch stand to column



PARTS

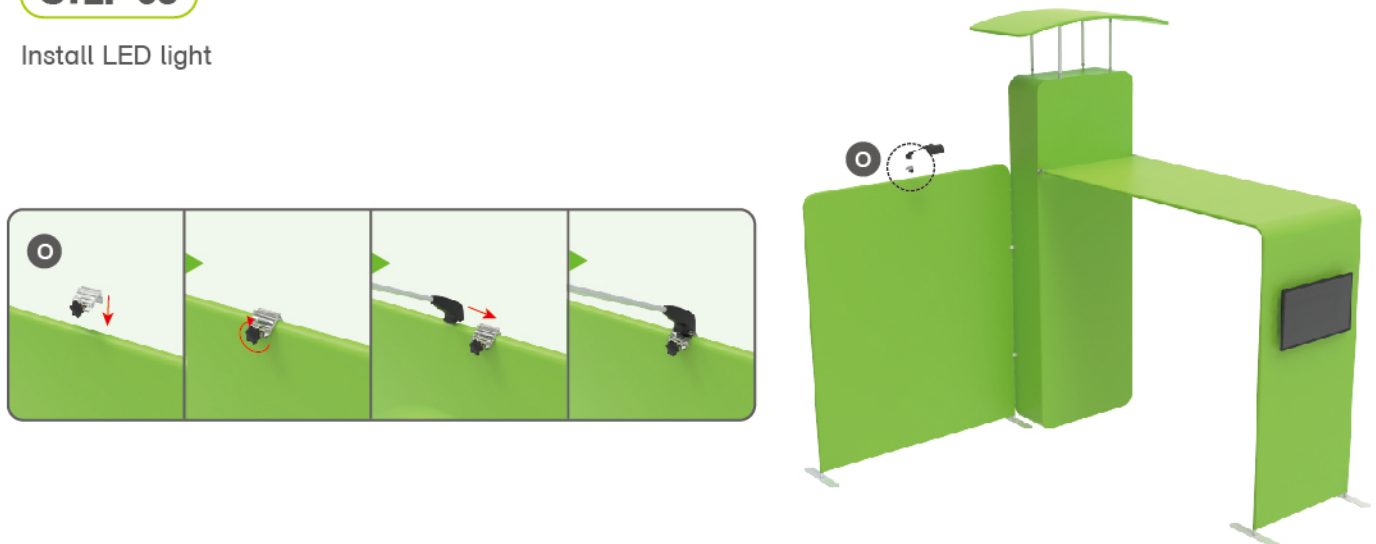
STEP 04

To install the TV mount in position



STEP 05

Install LED light

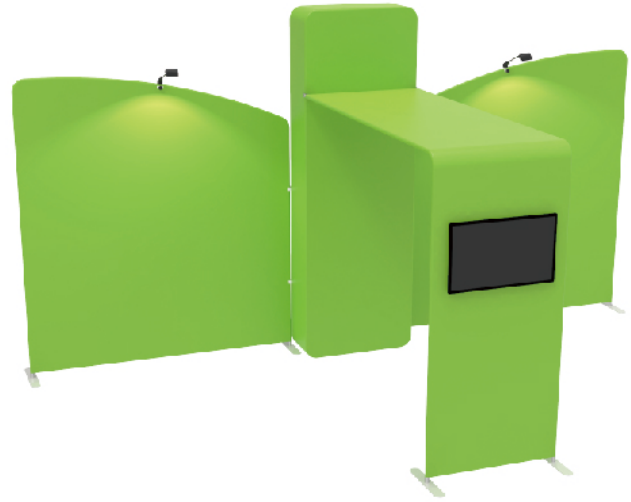


PARTS

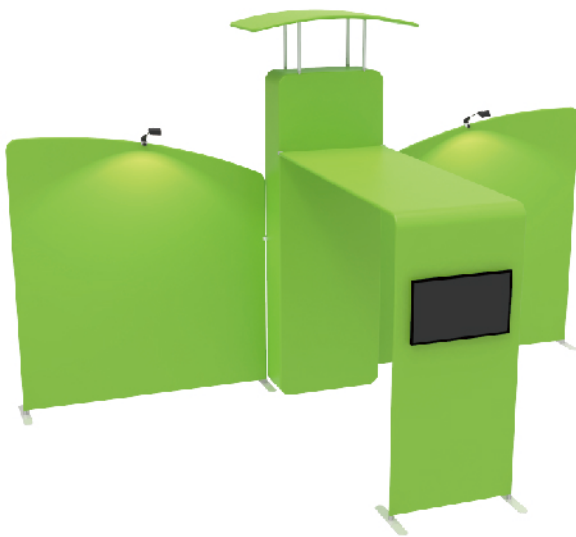
Same Assembly Steps for below Booths



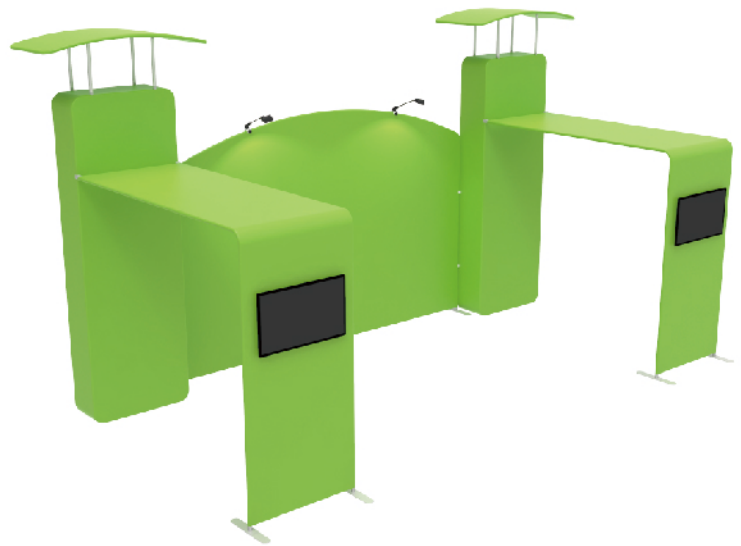
10X10FT-BOOTH-07



10X20FT-BOOTH-Q



10X20FT-BOOTH-12



10X20FT-BOOTH-14