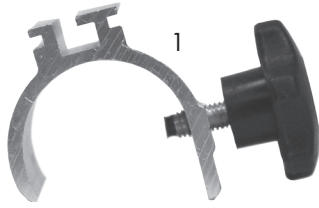


# Light Clip for EuroFit Displays

## Product Parts

1 - Light Clip\*



\*Fits all EuroFit displays with 1.25" diameter tubing.

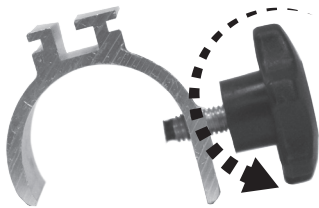


Shown with Ultimate Led Light.  
Light sold separately.

## Product Set-Up

### Step 1

Loosen thumbwheel enough to allow for clearance to fit over frame and graphic.



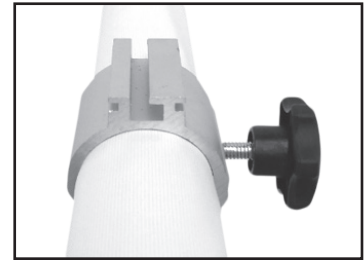
### Step 3

Tighten thumbwheel to secure in place. Do Not Over Tighten.



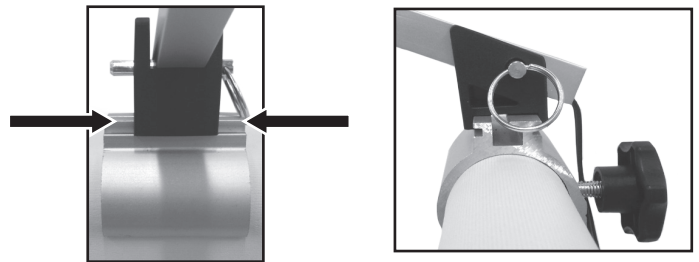
### Step 2

Place Light Clip (1) at the top of your display. Not intended for vertical mounting.



### Step 4

Slide your light onto the rail of the Light Clip.



## Storage & Care

Store in a cool, dry location. To clean, wipe with damp cloth.