

# Inversion Hanging Retractor

24", 36", 48"

## Product Parts

- 1 - Case
- 2 - Retractor Base
- 3 - Snap Rail
- 4 - Key



## Display Set-Up

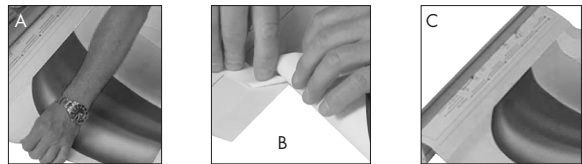
### Step 1

Remove both endcaps from the Snap Rail (3) and snap open. Fully insert the bottom edge of the graphic into the groove of the Snap Rail (3) close the Snap Rail (3) & replace the endcaps.



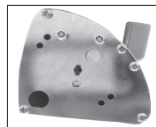
### Step 2

(A) Lay the banner flat, printed side up and align the banner to the top of the leader. (B) Connect the graphic to the leader by connecting the loop on the banner to the hook on the leader (C).

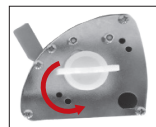


### Step 3

With graphic facing up and Retractor Base (2) nearest you, remove cover on right side. Fully insert Key (4) into key slot and turn in direction of arrow. It takes several turns to build enough tension to get graphic to pull into Retractor Base (2). Keep other hand on graphic while continuing to turn Key (4) slowly allowing graphic to fully enter Retractor Base (2). Remove key then replace cover.



Left Side



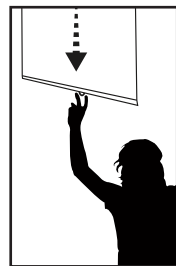
Right Side  
Key slot

### Step 4

Using the two attached rings on base securely mount your Inversion Hanging Banner in desired location. We recommend medium strength wire (not included). Mount your hardware a minimum of 72 inches (6 feet) from floor.

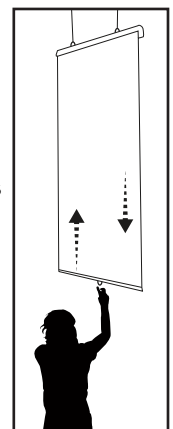
### Step 5

Using attached ring on Snap Rail (3) gently pull graphic out of Retractor Base (2) to desired length.



### Step 6

To retract graphic back into Retractor Base (2) give a quick downward tug on ring. This motion is similar to retracting a window shade.



## Storage & Care

Place all product parts into Carry Case and store in a cool dry location.