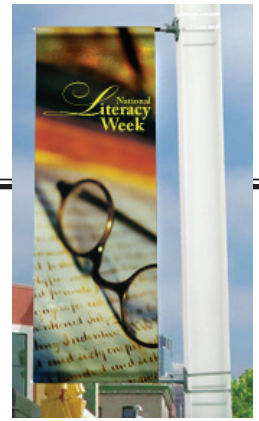


Instructions For:

Versatile Banner Bracket System



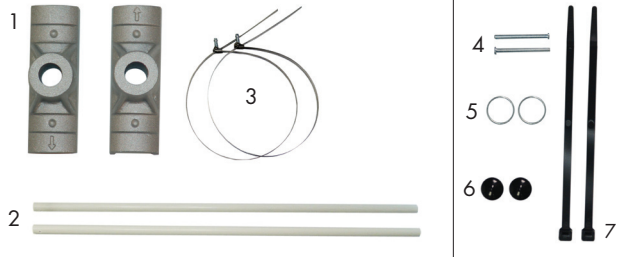
Product Specifications

Graphic sizes will vary - **Do not exceed 24 Square Feet**

Requirements: 2" Top and Bottom Pole Pockets with #2 Grommets

Product Parts

- 1 - Castings
- 2 - Fiberglass Arms
- 3 - 40" Stainless Steel Bands (x4)
- 4 - Pins
- 5 - Rings
- 6 - End Caps
- 7 - Nylon Ties



*Screw/nut driver will be needed

Step 1

Take out all parts.

Step 2

Attach top Casting (1) to pole. Be sure the arrow is facing up - away from the banner.

Secure the top Casting (1) to the Pole with two Stainless Steel bands (3). Tighten the bands until they hold the bracket securely and lock it into place with a screwdriver or nut driver. Clip off any excess band length.



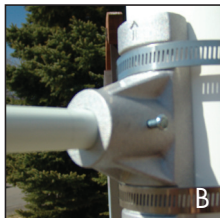
Note: On the Top Casting the arrow is facing away from banner

Step 3

Insert the end of a Fiberglass Arm (2) with the hole in it into the top Casting (1) **Image A**. Line up the holes on the arm to the holes on the sides of the Casting.

Secure by inserting a Pin (4) through the holes in the Casting and the Arm as shown in **Image B**.

Attach a Ring (5) through the hole at the end of the Pin (4) **Image C**.



Step 5

Place Rubber Cap (6) over the end of the Fiberglass Arm (2).



Step 6

Measure the length of your banner to determine where to place the Lower Casting.

Repeat Step 2 - 4 to attach the Lower Casting (1) and Fiber Glass Arm (2)
Be sure the arrow is facing down - away from the banner.



Note: On the Lower Casting the arrow is facing down away from banner

Step 8

Slide your banner onto the Fiberglass Arms (2).

Secure the banner on the top and bottom by threading a Nylon Tie (7) through the Ring (5) and the grommet on your banner.

