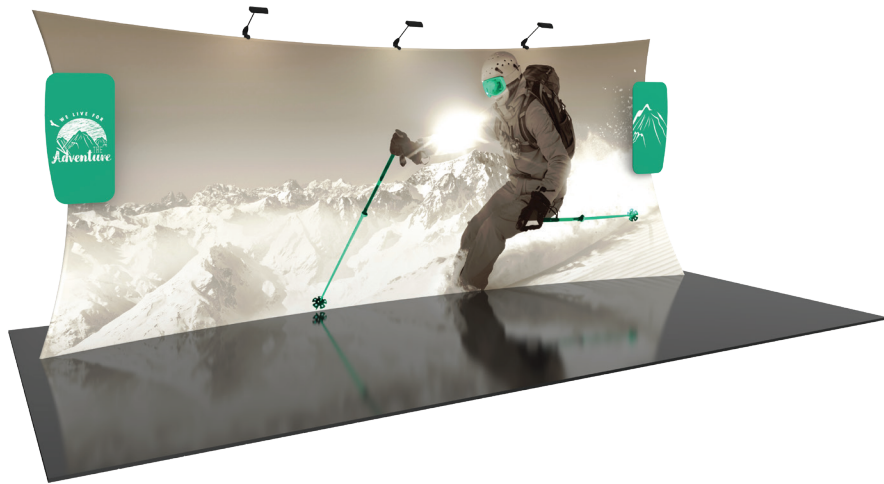


# Formulate Designer Series 20' Backwall - Kit 10

## FMLT-DS-20-10

Formulate® Designer Series 20ft displays have unique stylistic features and shapes, are portable and easy to assemble. The aluminum tube frame features snap-buttons and/ or spigot connections and zipper pillowcase fabric graphics. All displays come in portable, wheeled transit cases. Simply pull the pillowcase fabric graphic(s) over the frame and zip.



## features and benefits:

- Premium aluminum tube frames with snap button / spigot assembly
- Easy to store and ship
- Quick to set up
- Weighted legs for added stability
- One pillowcase fabric graphic
- Two sintra accent graphics
- Three Lumina 200 display lights included
- Lifetime limited hardware warranty against manufacturer defects

## dimensions:

### Hardware

Assembled unit:  
229.93" w x 94.19" h x 33.29" d  
5841mm(w) x 2393mm(h) x 846mm(d)

Approximate weight with cases:  
87 lbs / 39.5 kgs

### Shipping

Packing case(s):  
1 OCE-2  
1 OCH2

Shipping dimensions:  
OCE-2: Expandable case length (l) may vary  
40" - 66" l x 18" h x 18" d  
1016mm-1677mm(l) x 458mm(h) x 458mm(d)

OCH2:  
52" l x 30" h x 14" d  
1321mm(l) x 762mm(h) x 356mm(d)

Approximate total shipping weight  
(includes cases & graphics):  
108 lbs / 49 kgs

### Graphic

Refer to related graphic template for more information.

Visit:  
[www.exhibitors-handbook.com/graphic-templates](http://www.exhibitors-handbook.com/graphic-templates)

## additional information:

Graphic material:  
dye-sublimation zipper pillowcase fabric

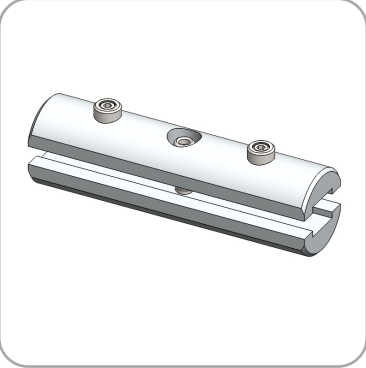
We are continually improving and modifying our product range and reserve the right to vary the specifications without prior notice. All dimensions and weights quoted are approximate and we accept no responsibility for variance. E&OE. See Graphic Templates for graphic bleed specifications.

# Included In Your Kit

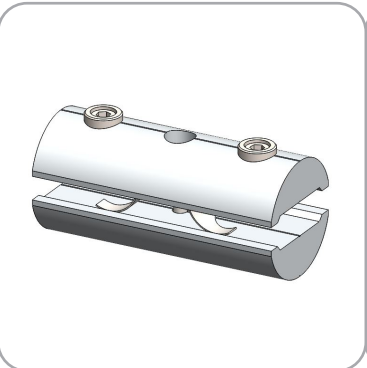
Tools, Components, & Connectors



HEX KEY SET x1



ES30 x6

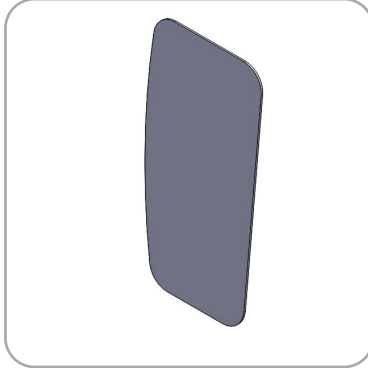


ES50-1 x16

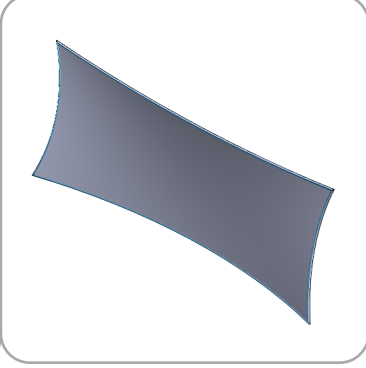


LUM-LED-ORL-B x3

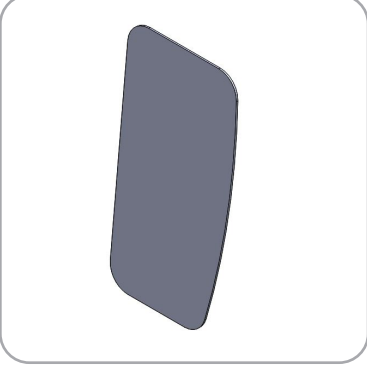
Graphics



FMLT-DS-20-10-A-G



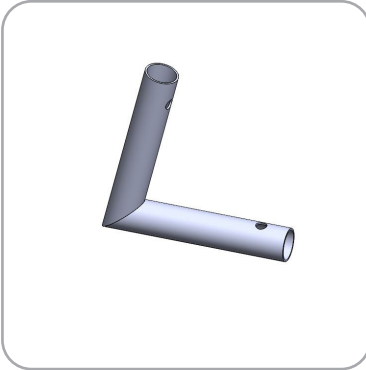
FMLT-DS-20-10-B-G



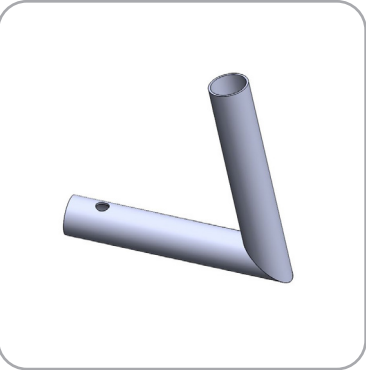
FMLT-DS-20-10-C-G

# Included In Your Kit

Tubes



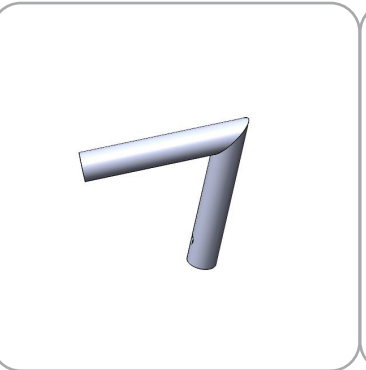
FMLT-DS-20-10-T1 x1



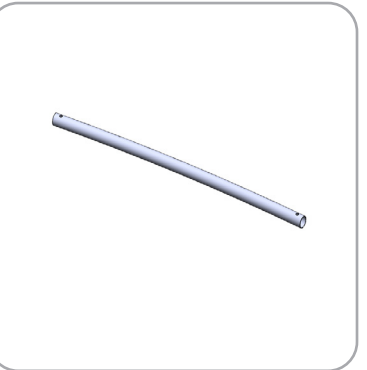
FMLT-DS-20-10-T2 x1



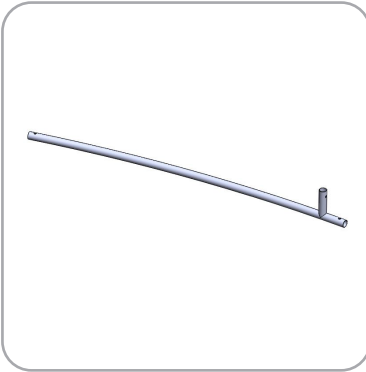
FMLT-DS-20-10-T3 x1



FMLT-DS-20-10-T4 x1



FMLT-DS-20-10-T5 x2



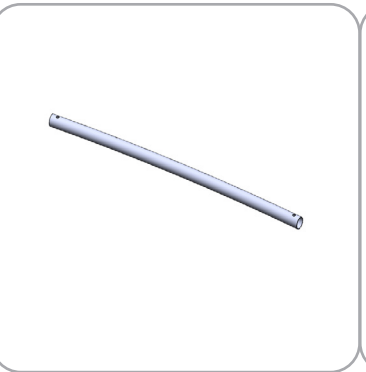
FMLT-DS-20-10-T6 x1



FMLT-DS-20-10-T7 x1



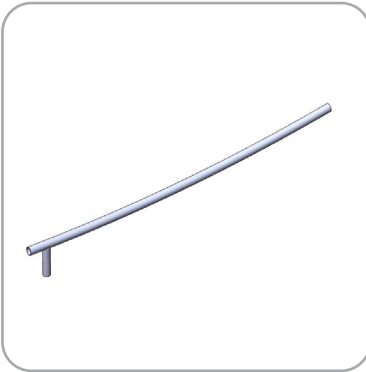
FMLT-DS-20-10-T8 x4



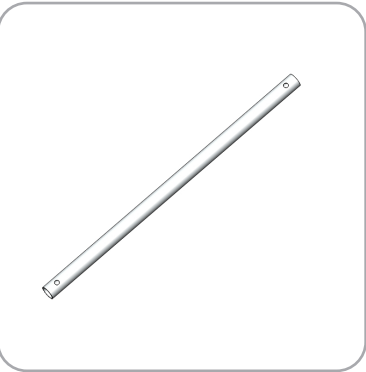
FMLT-DS-20-10-T9 x2



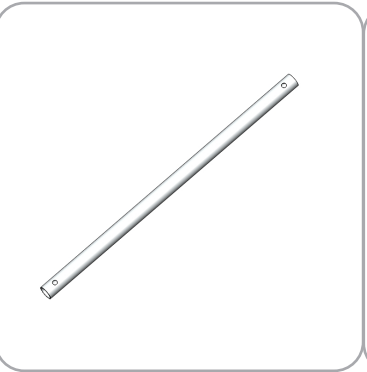
FMLT-DS-20-10-T10 x1



FMLT-DS-20-10-T11 x1



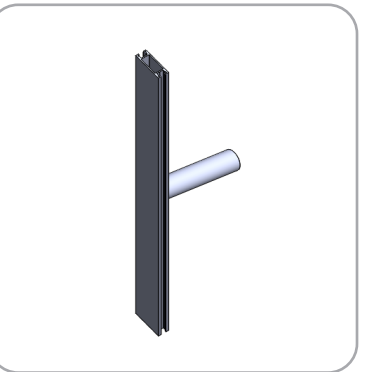
FMLT-DS-20-10-T12 x2



FMLT-DS-20-10-T13 x2



FMLT-DS-20-10-T14 x2

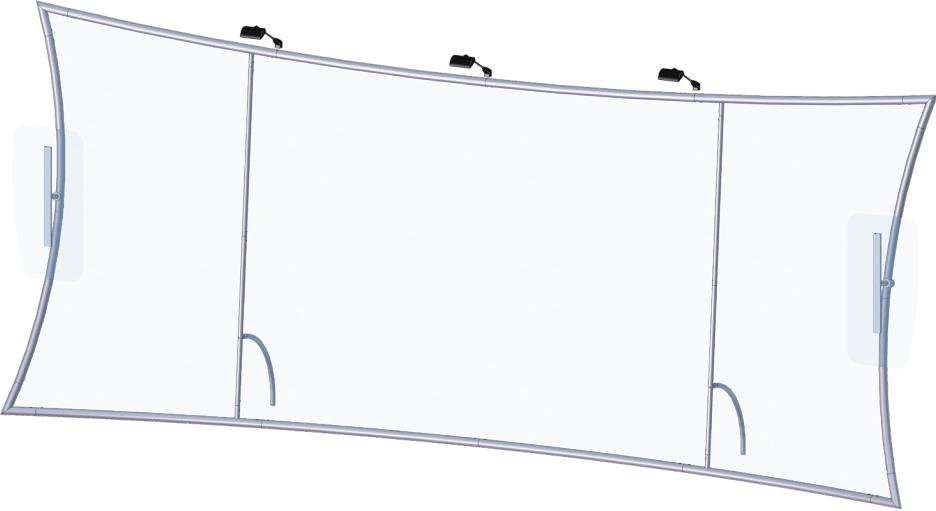
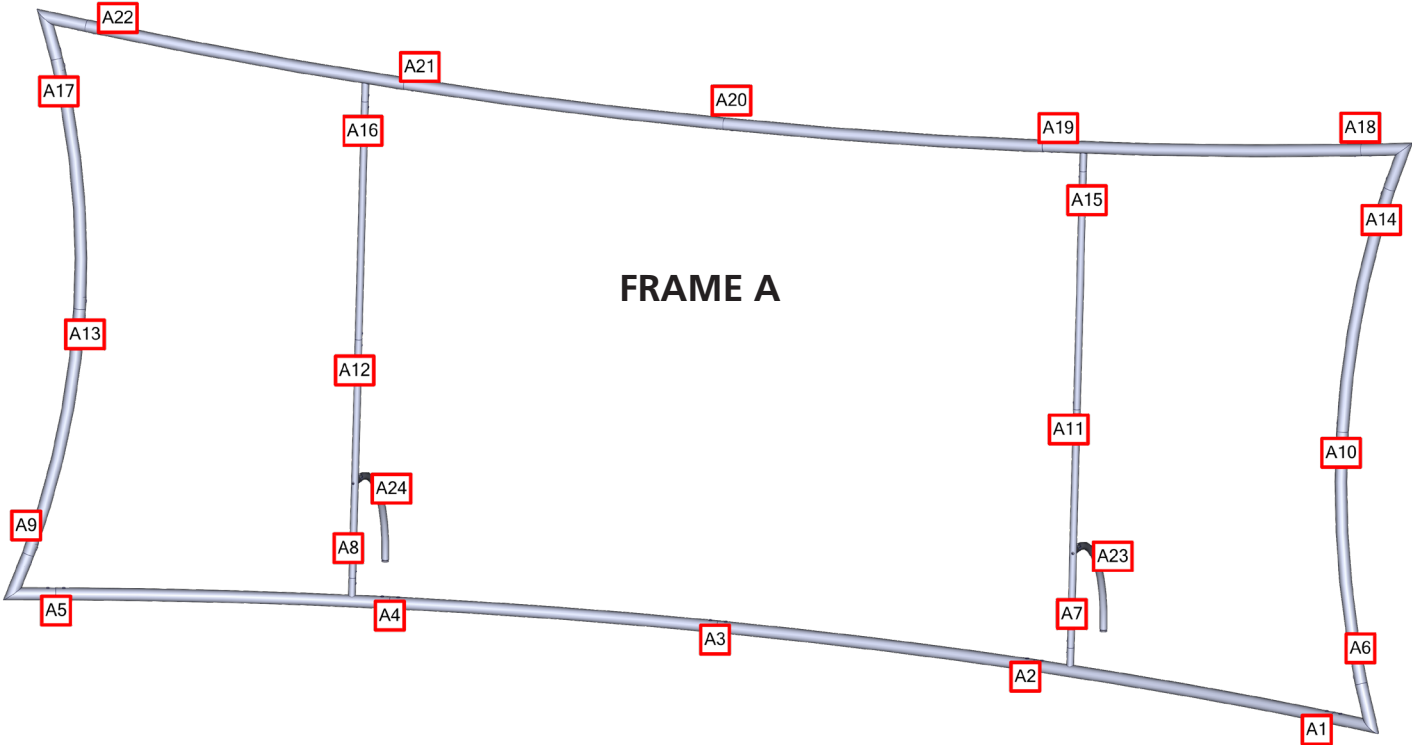


FMLT-DS-20-10-T15 x2



# Labeling Diagram

FMLT-DS-20-10

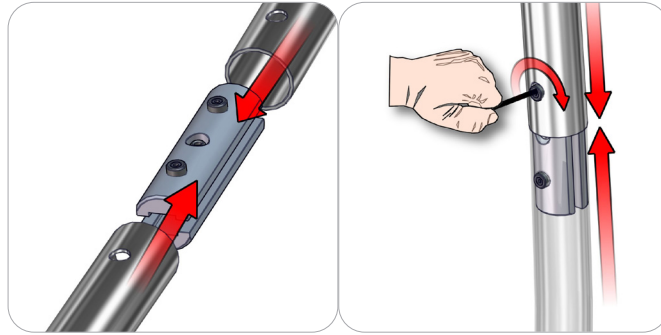


OVERVIEW

# Connection Methods

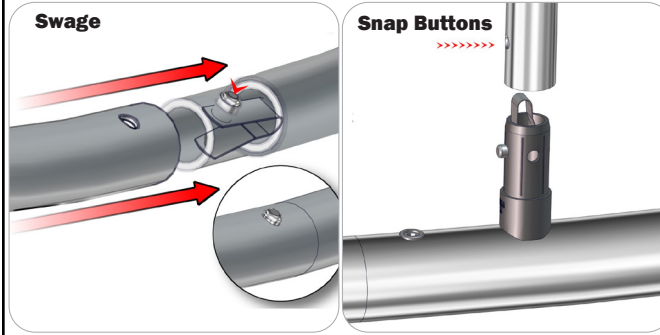
Formulate™ structures use a number of different yet simple connection methods. Your kit will include one or more of the connection methods shown below. Steps within the Kit Assembly will reference a specific method for each connection point.

## Connection Method 1: ES30 / ES50 / ES75



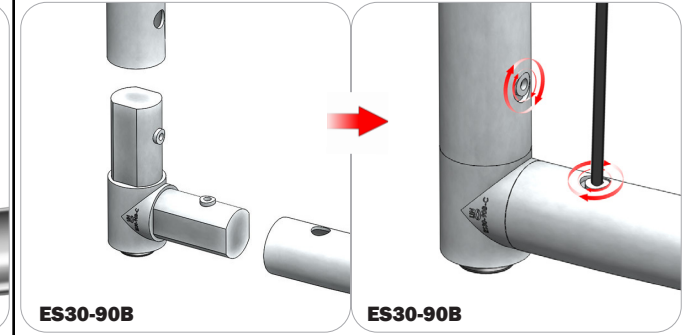
Compress the unlocked connector and slide one tube onto each end. Lock both screws carefully using your hex key tool. Be sure to lock securely, but do not overtighten.

## Connection Method 2: Snap Buttons & Swage



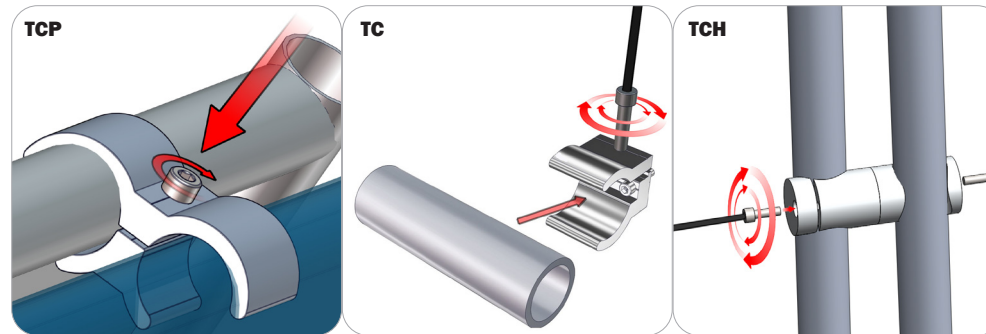
Locate the snap button on the connector or swage tube. Locate the hole on the corresponding tube. Press the snap button with your thumb and slide the tube and connector together so that the snap button snaps fully into the lock hole. To disassemble, press the snap button and pull apart.

## Connection Method 3: ES30-90B / ES30-I / ES30-C



Compress one unlocked end of the connector and slide it through one tube end. Compress the other end of the connector and slide the second tube on. Lock both screws carefully using your hex key tool. Be sure to lock securely, but do not overtighten.

## Connection Method 4: Tube Clamps



Be sure to fully assemble all frames before using clamps. With the clamp unlocked, place one tube of the first frame into the mouth of the clamp. Place the second tube (if applicable) into the second mouth of the clamp. With both frame's tubes in the clamp, be sure to lock securely, but do not overtighten.

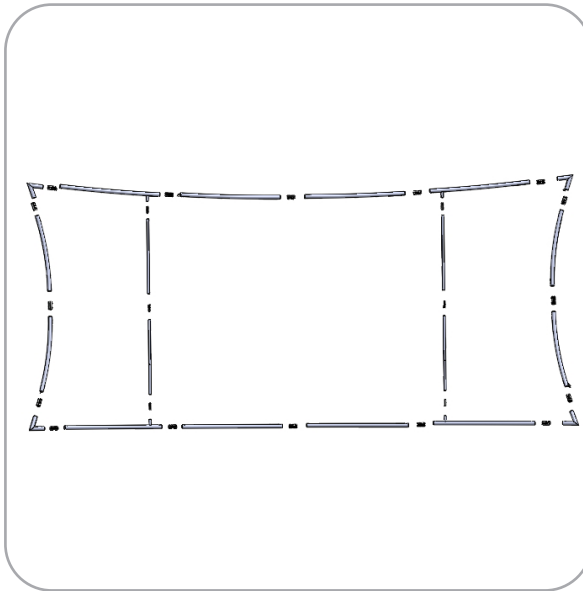
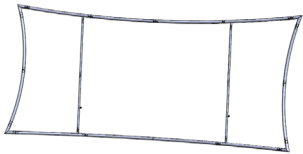
# Kit Assembly

## Step by Step

### Step 1.

Gather the components necessary for assembling Frame A and lay them flat on the floor. Assemble in the order the Labeling Diagram instructs. Lock your connectors into place using the provided hex key set.

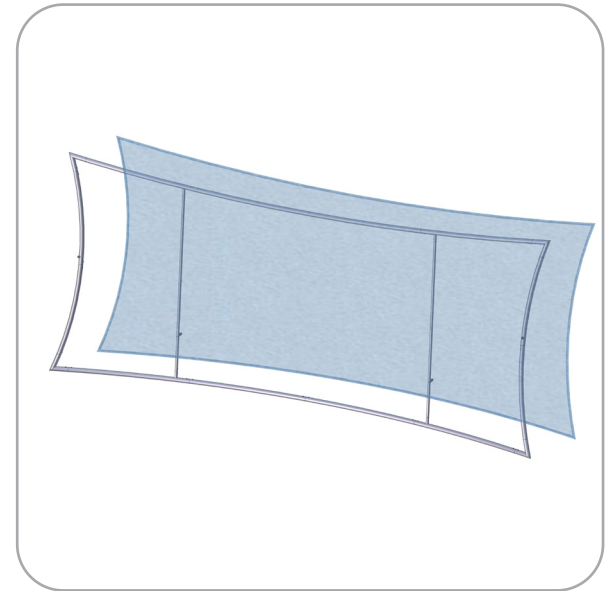
Please reference Connection Method 1 for more details.



### Step 2.

With the frame laying flat on the floor, locate your pillowcase A graphic. With the pillowcase unzipped, encase the frame by covering the frame from top to bottom.

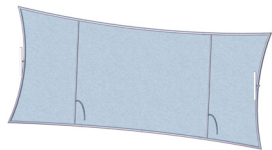
Zipper Located on left side and bottom of Graphic A.



### Step 3.

Attach the legs by snapping them into the TC-30-C connectors located on the rear side of your frame.

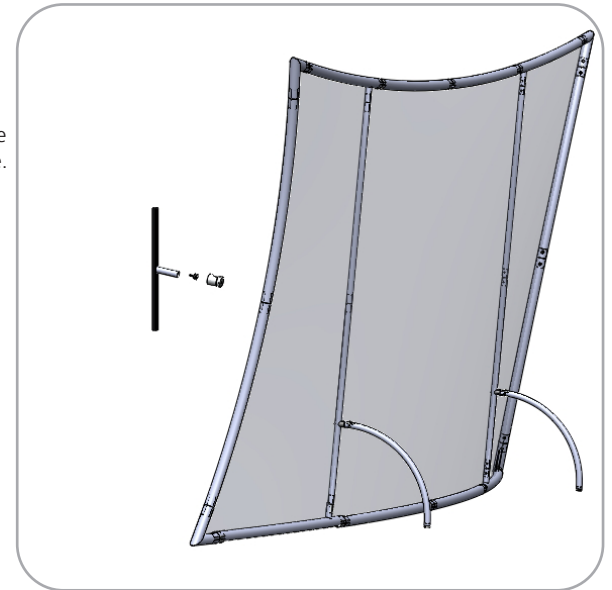
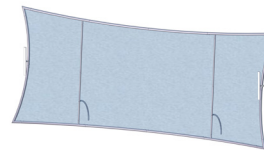
Please reference Connection Method 2 for more details.



### Step 4.

With the provided hex key set, attach the FMLT-DS-20-10-T15's assemblies onto Frame A. One the left side and one on the right side.

Please reference Connection Method 4 for more details.



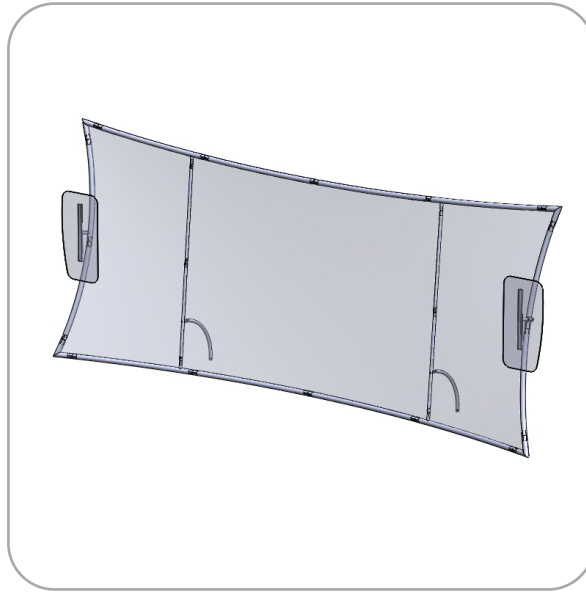
# Kit Assembly

## Step by Step

### Step 5.

Using velcro, attach the sintra accent graphics to the flat face of the FMLT-DS-20-10-T15's.

VELCRO



### Step 6.

Attach the lights using the provided clamps.

Please reference Connection Method 4 for more details.

