

Setup Instructions

Waveline Counter CA700



TOOLS

No tools required

PARTS

(A) hard shipping case lid



(B) hard shipping case base



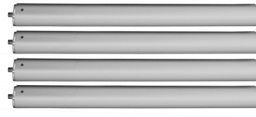
(C) counter top



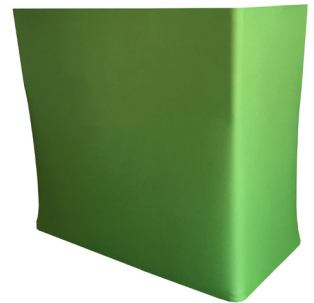
(D) 4 male vertical support poles



(E) 4 female vertical support poles



(F) fabric graphic



STEP 01

Put case flat on the floor and undo the two straps.



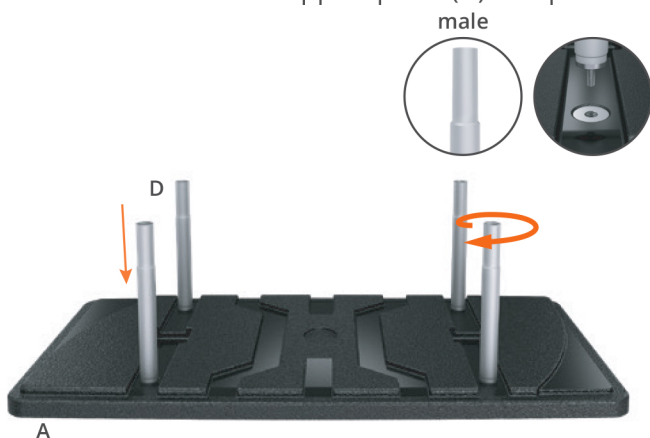
STEP 02

Lift the case lid (A) and remove the contents in the case.



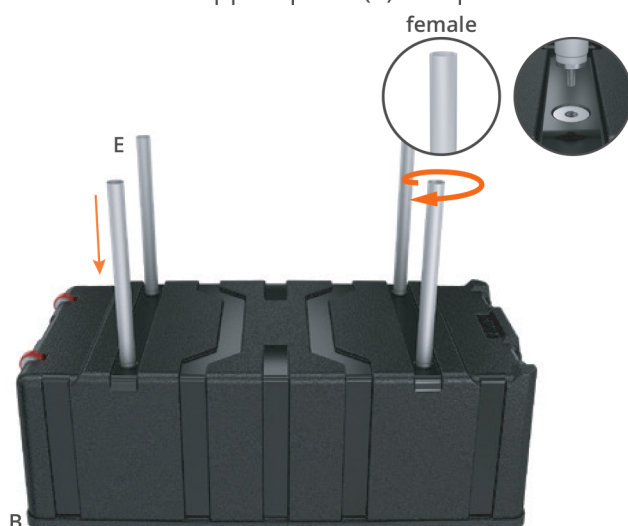
STEP 03

Put the case lid (A) on the floor first. Screw the male vertical support poles (D) into place.



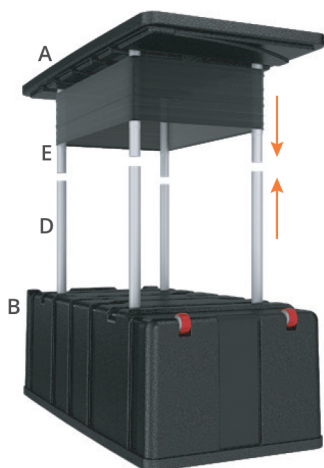
STEP 04

Put the base (B) on the floor with wheels up and screw the female vertical support poles (E) into place.



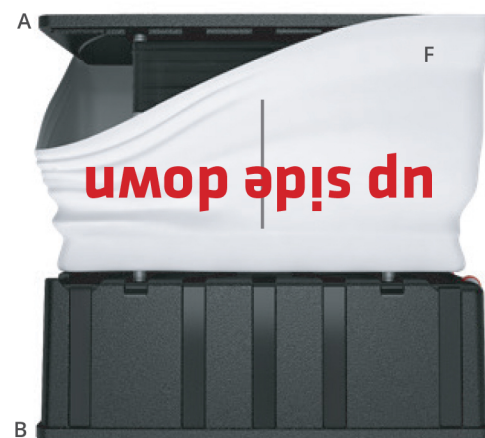
STEP 05

While base (B) is on the floor, align the case lid (A) support poles (E) with the base (B) support poles (D). Press together firmly to secure. Optional: Install storage pocket onto case lid first.



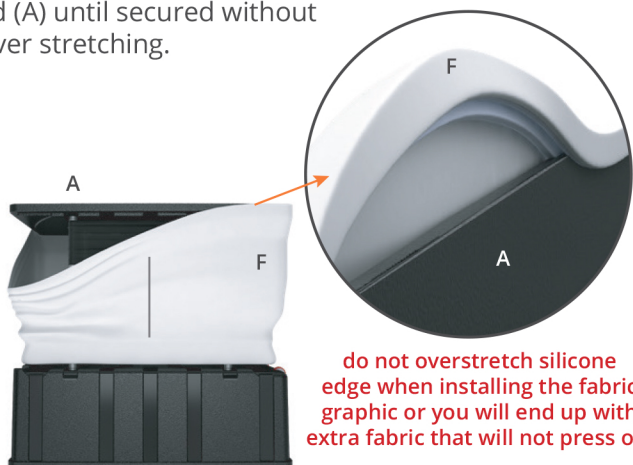
STEP 06

Place case in a clean area upside down to place the fabric graphic (F) over the case. Start at the top with fabric graphic (F) upside down. Make sure zipper is in the middle.



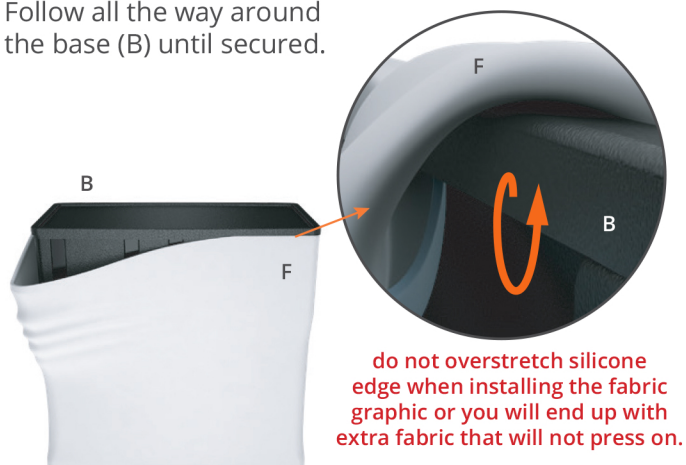
STEP 07

Pull the silicone grooved edge of the fabric graphic (F) over the top of the case lid (A) and push onto the edge. Push the groove all the way around the case lid (A) until secured without over stretching.



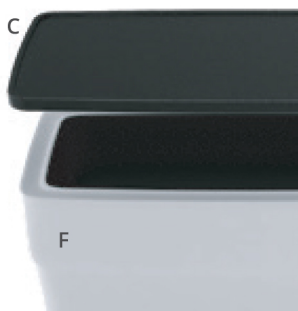
STEP 08

Turn the entire case set-up over and pull the edge of the fabric graphic (F) over the top of the base (B) and tuck under the lip into the groove of base (B). Follow all the way around the base (B) until secured.



STEP 09

Make sure that all wrinkles are out and the fabric graphic (F) looks straight. Press the counter top (C) onto the case to secure.



STEP 10

Complete.



QUICK VIEW

Hardware configuration.



STORAGE

The zipper on the back is used to access storage space.

