

# Trio

**Trio Bannerstand: TRIO**  
**Trio Bannerstand w/Lit Pocket: TRIO-LP**

An excellent choice for a telescopic banner stand, the Trio supports a single and double-sided graphic. It is made of anodized aluminum and has an optional literature pocket to add even more functionality. It is very stable and is quick and easy to set-up.



We are continually improving and modifying our product range and reserve the right to vary the specifications without prior notice. All dimensions and weights quoted are approximate and we accept no responsibility for variance. E&OE. See Graphic Templates for graphic bleed specifications.

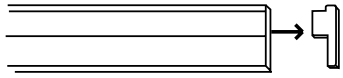
**features and benefits:**

- **NEW**
- Tri-pod bannerstand
- Variable graphic height  
= 28.75" up to 84"h
- Hardware supports single or double-sided graphic
- Stable, anodized aluminum
- Quick and easy to set-up
- One year limited warranty against manufacturer defects

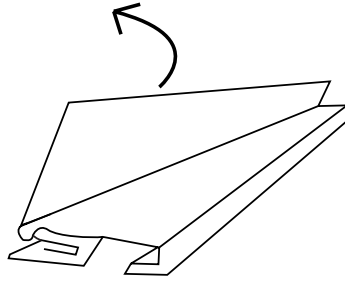
**dimensions:**

Hardware	Graphic
31.5" w x 38.74" up to 94.49" h x 25.28" d 800mm(w) x 984mm up to 2400mm(h) x 642mm(d)	Total visible area: 31.5" w x 84" h 800mm(w) x 2134mm(h)
Weight (including graphic): 7 lbs / 3.18 kg	Refer to related graphic template for more information
	Visit: <a href="http://www.exhibitors-handbook.com/graphic-templates/">www.exhibitors-handbook.com/graphic-templates/</a>
Shipping	
Shipping dimensions - ships in one box: 38.58" l x 13" w x 13" h 980mm(l) x 330mm(w) x 330mm(h)	
Shipping weight: 7.7 lbs / 3.5 kg	
	additional information:
	Recommended substrate: 13oz. smooth vinyl, 7oz. light cotton, 14oz. anti-curl vinyl, 8oz. oxford
	Trio3 pocket literature dispenser is optional
	Each pocket is 10" w x 12" h 254mm(w) x 305mm(h)
	Entire literature dispenser: 31.25" x 12.5" h 793.75mm(w) x 318mm(h)
	Recommended light: Lumina 2

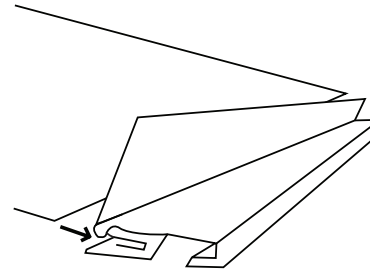
## Trio Graphic Attachment



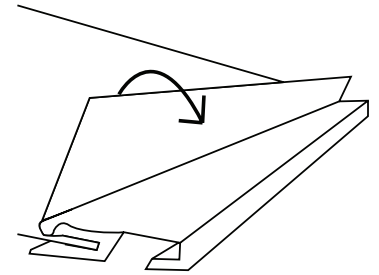
Remove black cap from snap rail attachment 1



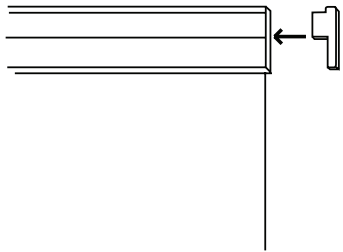
Open snap rail attachment 2



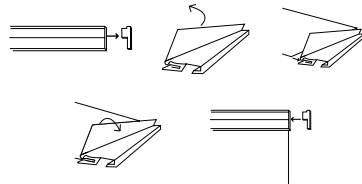
Insert graphic into snap rail attachment 3



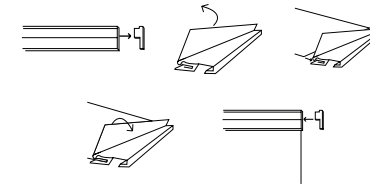
Close snap rail attachment to hold graphic in place 4



Insert black cap into snap rail attachment 5

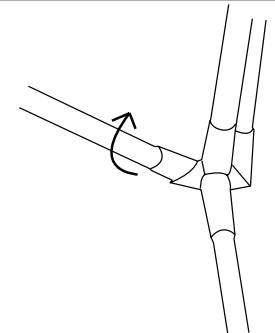


Repeat steps 1-5 for bottom rail 6

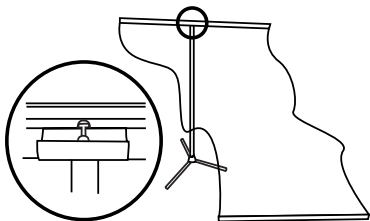


Repeat steps 1-6 for double-sided 7

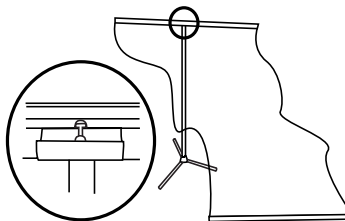
## Trio Assembly



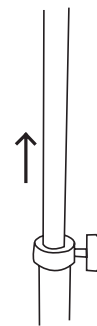
Rotate legs downward to snap into place 1



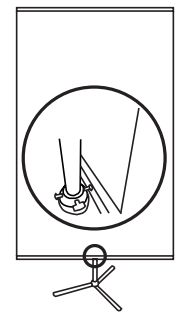
Hook top of graphic rail onto top of pole 2



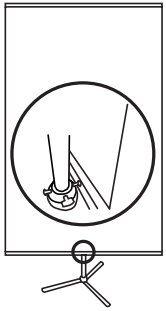
Repeat for double-sided 3



Raise pole 4



Once desired height is achieved, raise the section on the pole with hooks and hook into groove on bottom graphic rail 5



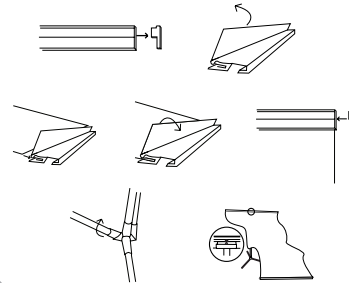
Repeat step 5 for double-sided 6



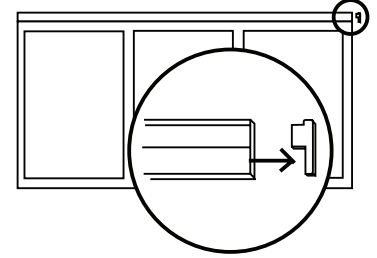
Unit is complete 7

## Lit Pocket Assembly

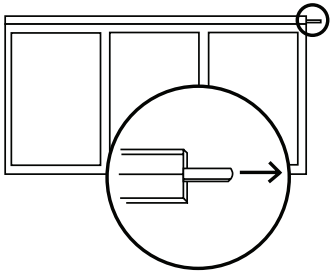
Follow steps 1-5 of graphic attachment and steps 1-2 of Trio Assembly



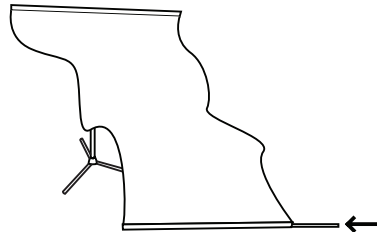
1



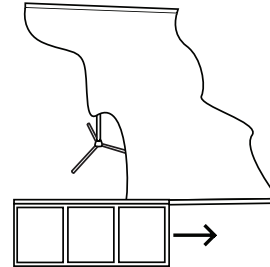
Remove black cap from lit pocket rail 2



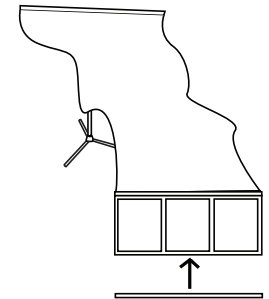
Remove thin rail from lit pocket rail 3



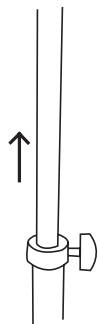
Insert thin rail into bottom of graphic 4



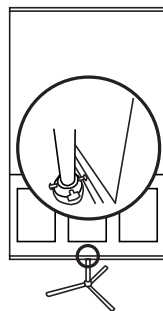
Slide lit pocket onto bottom of graphic. 5



Attach snap tail to bottom of graphic 6



Raise pole 7



Once desired height is achieved, raise the section on the pole with hooks and hook into groove on bottom graphic rail 8



Unit is complete 9