

**Step 1:** Attach lower column to base plate with (2) **Short Knobs**; Cover with **Gusset Caps**



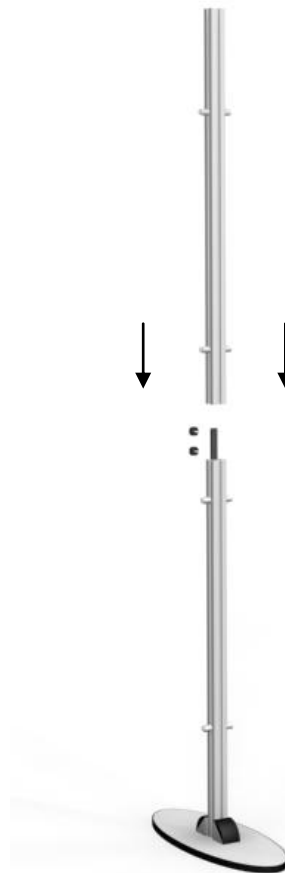
**Gusset Cap**



**Short Knob**



**Step 2:** Connect the upper column to the lower column using (2) **Short Knobs**



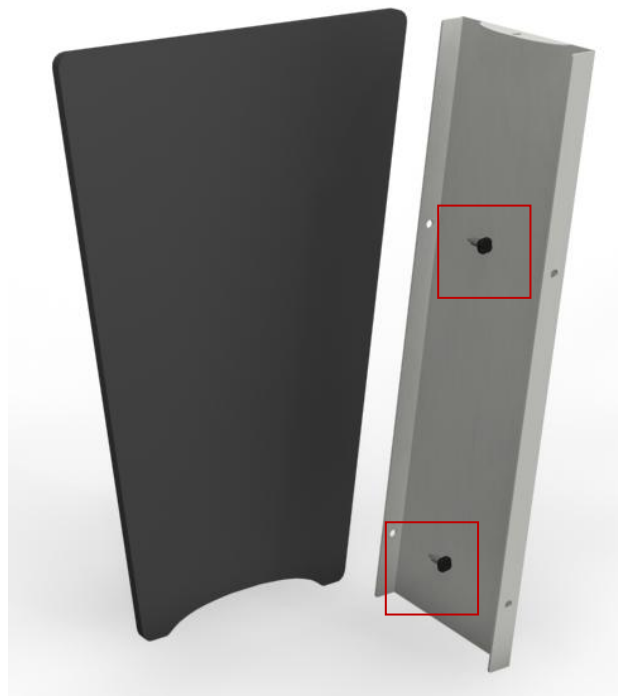
**Short Knob**



**Step 3:** Attach the wings to the columns using **Gripper Knobs**



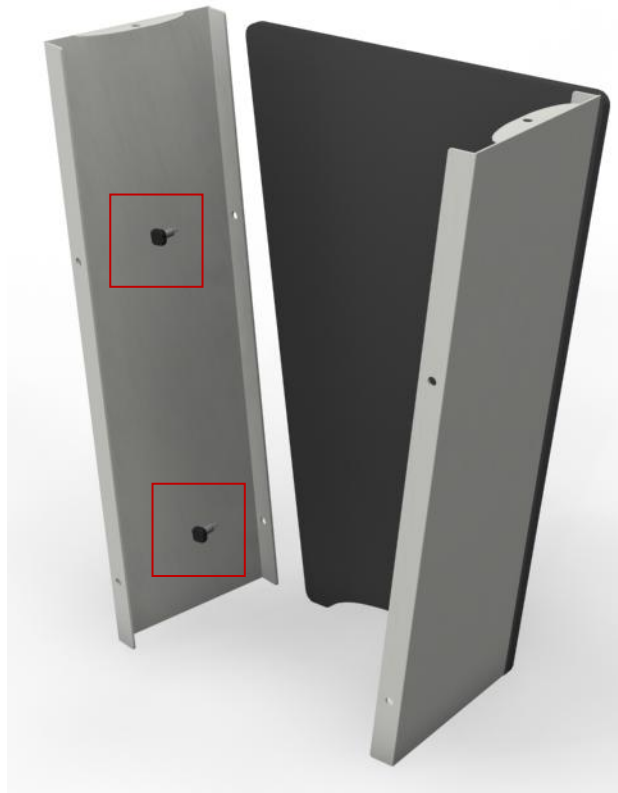
**Step 4:** Begin assembling NLC counter; Attach the front and side panels using (2) **Long Knobs**



**Long Knob**



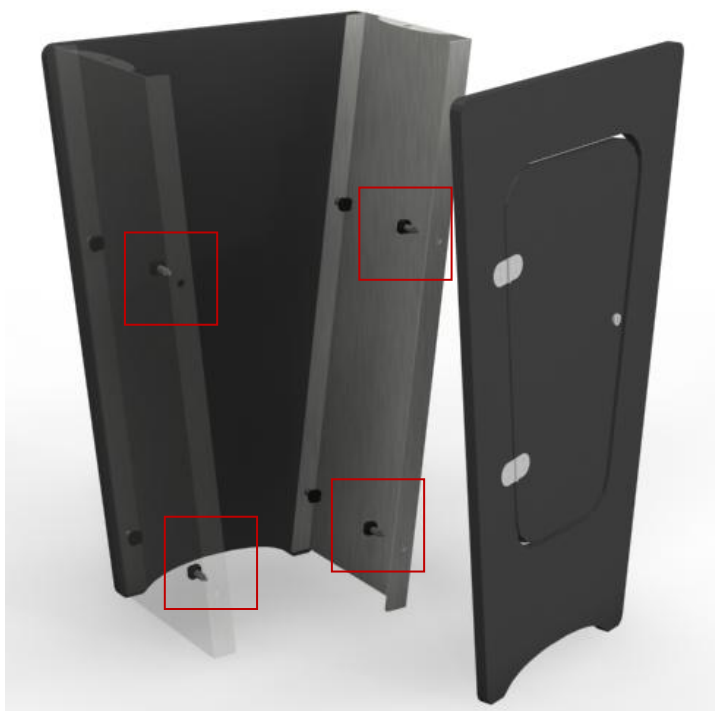
**Step 5:** Attach the other side panel with (2) **Long Knobs**



**Long Knob**



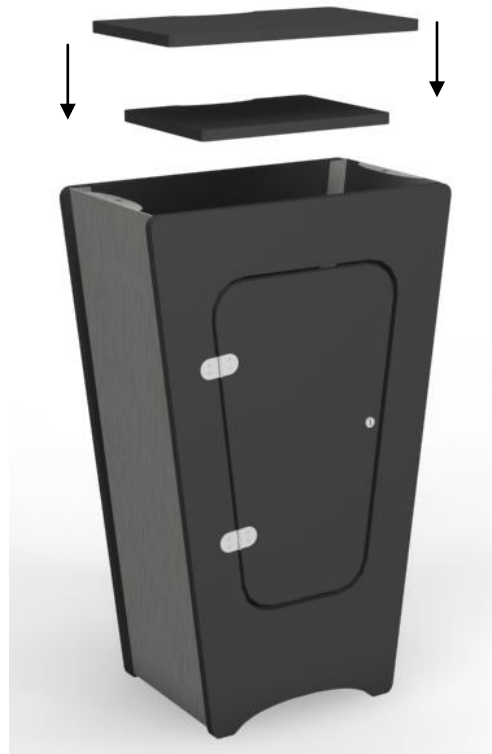
**Step 6:** Reaching through the opening on top; Connect the door panel with (4) **Long Knobs**



**Long Knob**



**Step 7:** Lower the shelves into position



**Step 8:** Reaching through the door; Lower the counter top into position and secure with (2) Long Knobs



**Long Knob**



**Step 9:** Place the NLC counter into position



**Finished**

