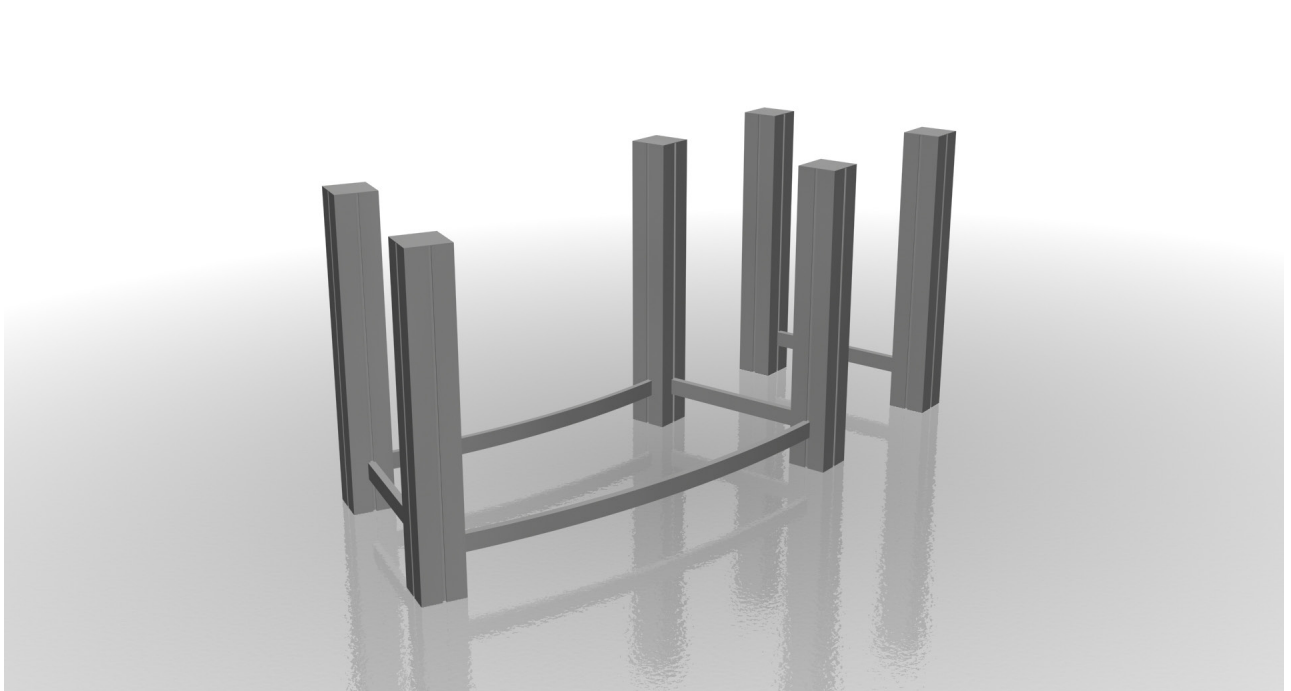


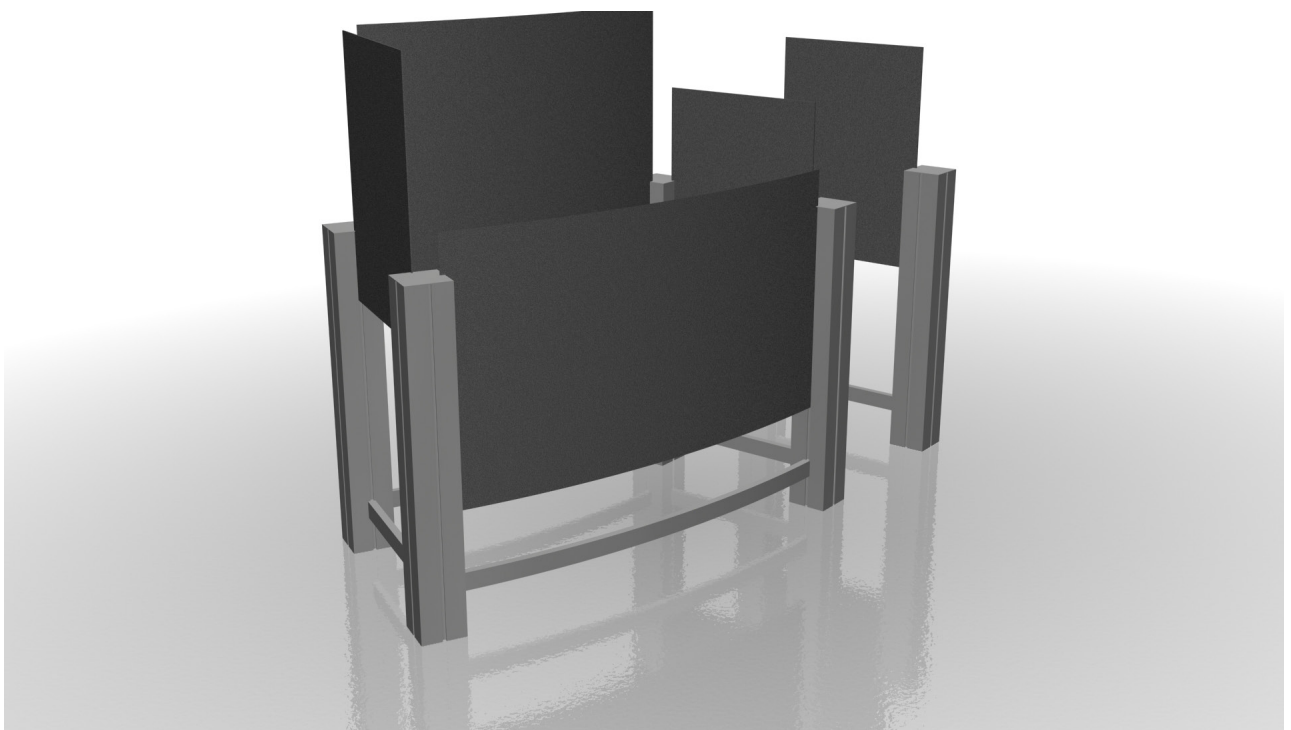
# XRLine

---

**Step 1.** Attach lower cross bars to verticals.



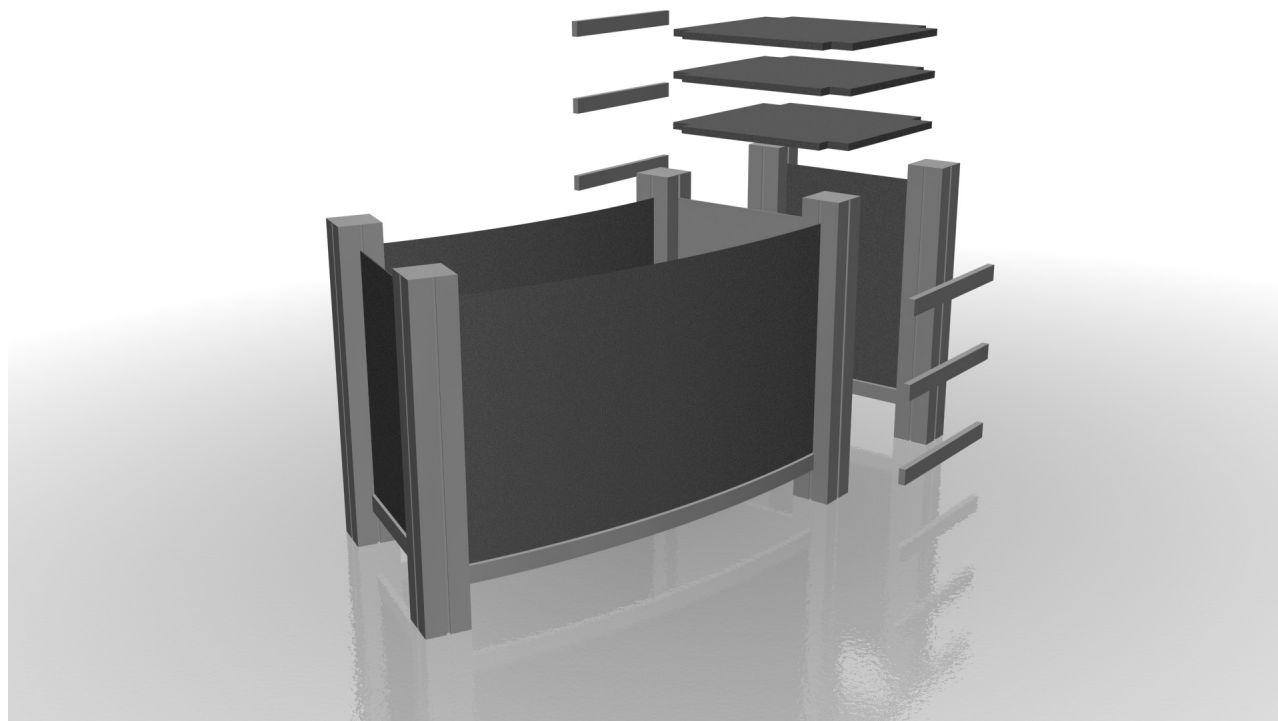
**Step 2.** Insert panels.



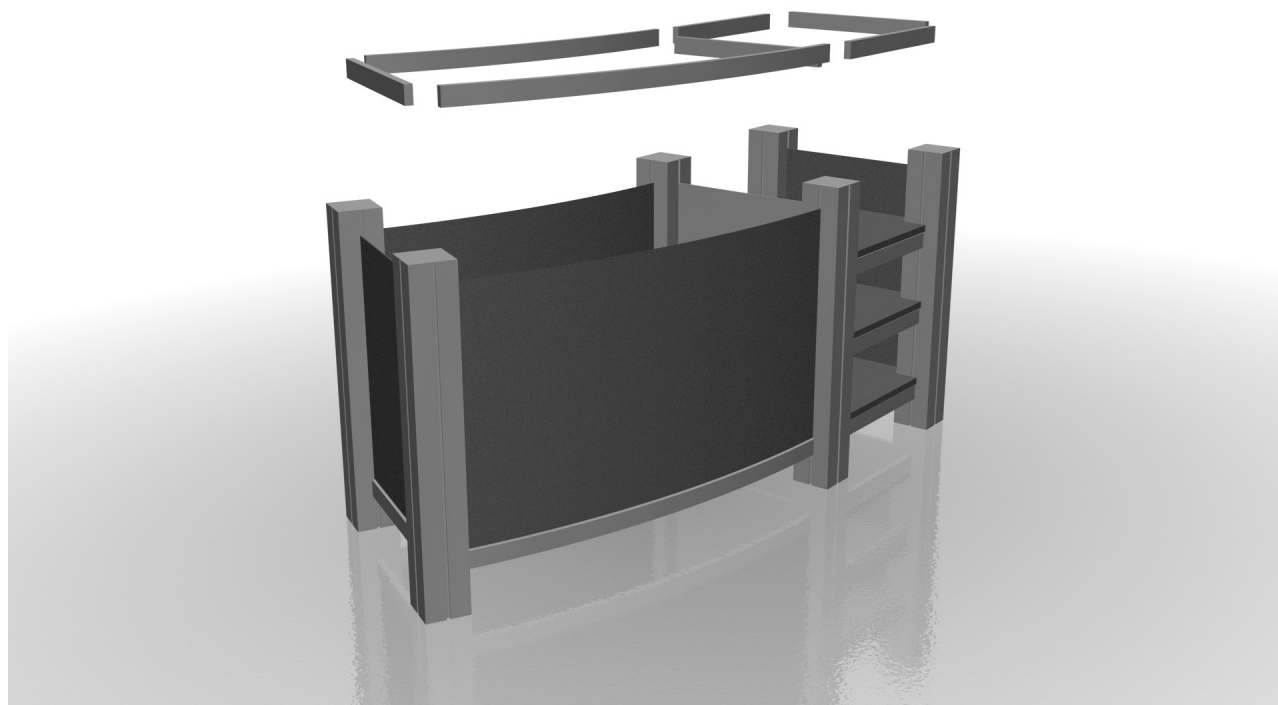
# XRLine

---

**Step 3.** Insert shelf cross bars to verticals, and slide shelves down.



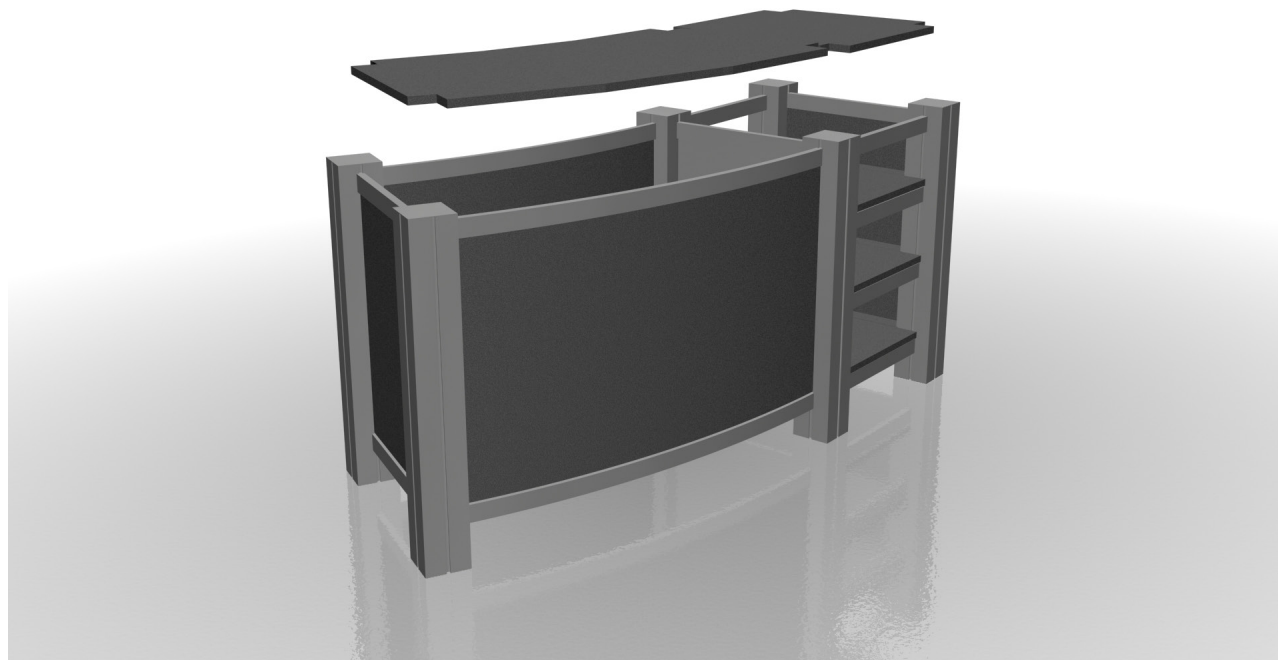
**Step 4.** Insert top cross bars to verticals.



# XRLine

---

**Step 5.** Place top into counter.



**Step 6.** Attach top panel to counter using standoffs.

