

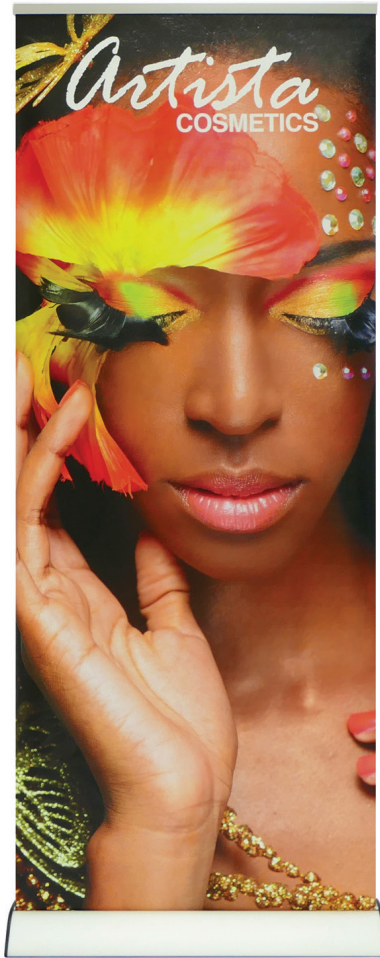
# BRUMBY ROLL UP RETRACTABLE BANNER STAND

RETRACTABLE BANNER STANDS

PRODUCT CODE: BRRUP



On frame



Travel Bag

## PRODUCT DESCRIPTION

The Brumby Roll Up is our new Mid Range roll up with a half moon shaped base. Graphics attach by clamp bar on top and by double stick tape on bottom. Base is finished in anodized aluminum and black plastic end plates.

DISPLAY DIMENSION	33.5" W x 80" H x 8" D
GRAPHIC DIMENSIONS	33.5" W x 80" H

## GRAPHIC MATERIAL

Super Flat Vinyl

## GRAPHIC FINISHING

5" Bleed at the bottom

## DISPLAY CONSTRUCTION

Sturdy Aluminum Construction

## SHIPPING WEIGHTS & DIMENSIONS

SINGLE BOX - 1 Unit

Shipping Weight	11 lbs (stand only) 12 lbs (frame and graphic)
Shipping Dimensions	36.5" H x 9" W x 5" D

MASTER BOX - 4 Units

Shipping Weight	35 lbs (stand only) 45 lbs (frame and graphic)
Shipping Dimensions	38" H x 13.5" W x 9" D

## LARGE QUANTITY FREIGHT

Master Box - Freight Shipping	28 boxes per 48" L x 40" W x 69" H skids
Master Box - Freight Weight	980 lbs (frame only) 1,260 lbs (frame & graphic)

## GRAPHIC TURN AROUND TIME

1 business days after proof approval

## AVAILABLE ACCESSORIES

LED Clamp Light (110 Volts)	Clamp Light (35 Watts)
AVAILABILITY	CA and PA



LED Clamp Light (Optional)



Clamp Light (Optional)

Note: Graphics aren't interchangeable

# BRUMBY ROLL UP RETRACTABLE BANNER STAND

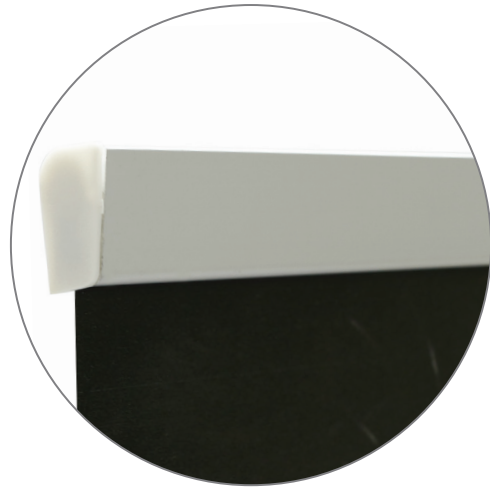
RETRACTABLE BANNER STANDS

PRODUCT CODE: BRRUP

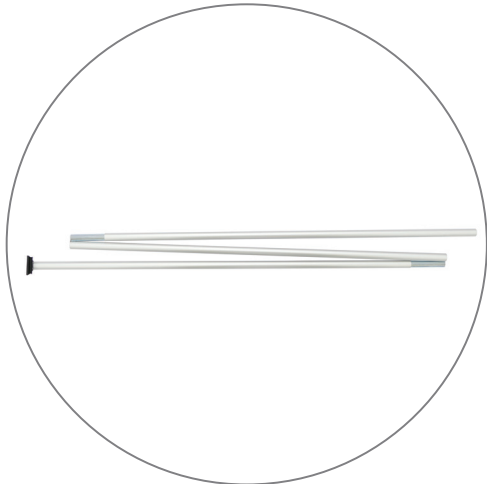
## PARTS LIST



Qty 1 - Brumby Roll Up Stand



Qty 1 - Clamp Bar



Qty 1 - Support Pole



Qty 1 - Travel Bag

# BRUMBY ROLL UP RETRACTABLE BANNER STAND

RETRACTABLE BANNER STANDS  
PRODUCT CODE: BRRUP

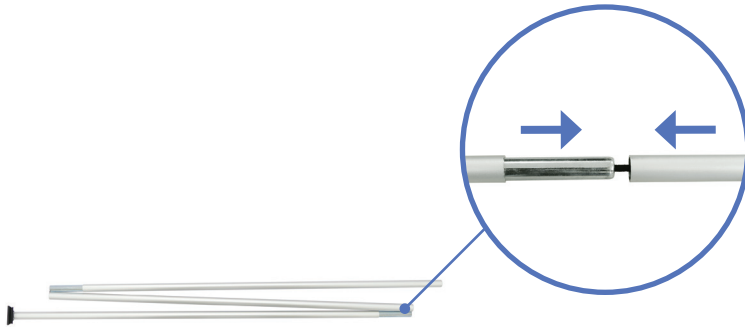
## SET UP INSTRUCTIONS

### Prepare Banner Stand

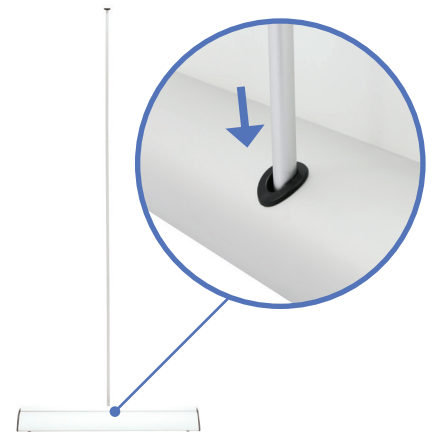


a. Remove Brumby Roll Up out of bag.

### Install Telescopic Pole



a. Assemble telescopic pole.



b. Insert telescopic pole into hole of the base stand.

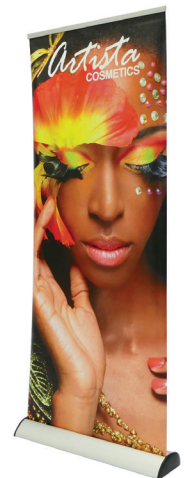
### Pull Up Banner



a. Pull banner out of base.



b. Attach telescopic pole to the clamp bar.



c. Complete stand.