

# ECONOROLL 24" SILVER

RETRACTABLE BANNER STANDS

PRODUCT CODE: ER24SLV



On Graphic On Frame



Econo Travel Bag

## PRODUCT DESCRIPTION

The Econo Roll delivers a professional looking display at an economical price. Set up and break down of the display takes seconds and conveniently stores in its included padded travel bag. Banner attached to the bottom of stand by double-sided tape and to the top by clamp bar.

DISPLAY DIMENSIONS	25" W x 80" H x 15" D
GRAPHIC SIZE	24" W x 80" H

## GRAPHIC MATERIAL

Super Flat Vinyl

## GRAPHIC FINISHING

5" Bleed at the bottom

## DISPLAY CONSTRUCTION

Sturdy Aluminum Construction

## SHIPPING WEIGHTS & DIMENSIONS

SINGLE BOX - 1 Unit

Shipping Weight	6 lbs (stand only) 7 lbs (frame and graphic)
Shipping Dimensions	40" H x 6" W x 6" D

MASTER BOX - 6 Units

Shipping Weight	36 lbs (stand only) 42 lbs (frame and graphic)
Shipping Dimensions	27" H x 13" W x 9" D

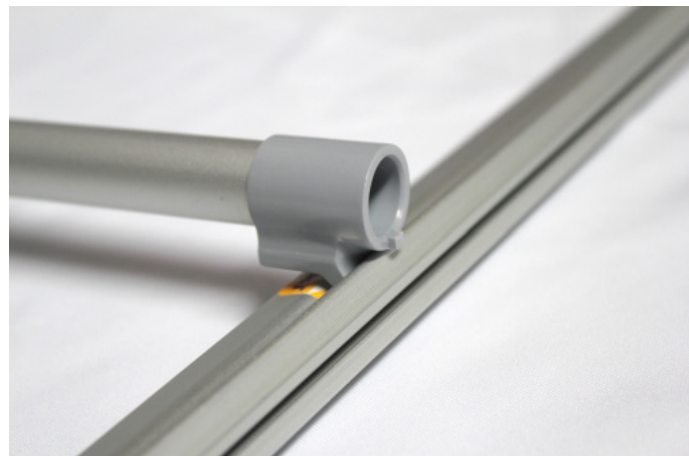
## LARGE QUANTITY FREIGHT

Master Box - Freight Shipping	25 boxes per 48" L x 40" W x 51" H skid
Master Box - Freight Weight	900 lbs (frame only) 1050 lbs (frame & graphic)

## GRAPHIC TURN AROUND TIME

2 business days after proof approval for up to qty 20

AVAILABILITY	CA, PA, and PFC
--------------	-----------------



# ECONOROLL 31.5" SILVER

RETRACTABLE BANNER STANDS  
 PRODUCT CODE: ER31.5SLV



On Graphic On Frame



Front



Back



Econo Travel Bag

## PRODUCT DESCRIPTION

The Econo Roll delivers a professional looking display at an economical price. Set up and break down of the display takes seconds and conveniently stores in its included padded travel bag. Banner attached to the bottom of stand by double-sided tape and to the top by clamp bar.

DISPLAY DIMENSIONS	32.5" W x 80" H x 15" D
GRAPHIC SIZE	31.5" W x 80" H

## GRAPHIC MATERIAL

Super Flat Vinyl

## GRAPHIC FINISHING

5" Bleed at the bottom

## DISPLAY CONSTRUCTION

Sturdy Aluminum Construction

## SHIPPING WEIGHTS & DIMENSIONS

SINGLE BOX - 1 Unit	
Shipping Weight	6 lbs (stand only) 7 lbs (frame and graphic)
Shipping Dimensions	36" H x 4" W x 4" D
MASTER BOX - 6 Units	
Shipping Weight	39 lbs (stand only) 45 lbs (frame and graphic)
Shipping Dimensions	35" H x 13" W x 9" D

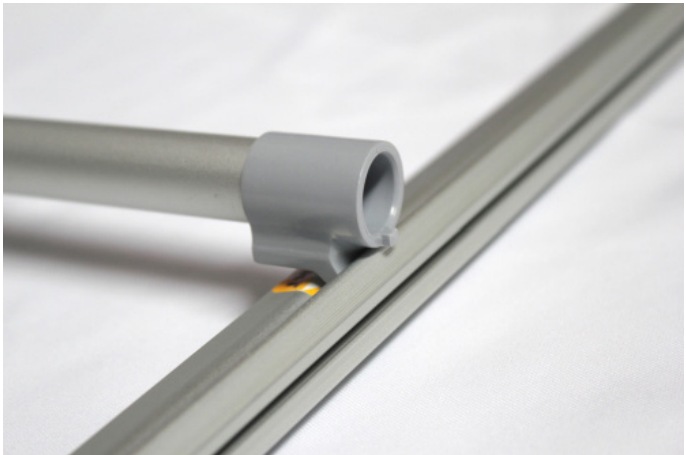
## LARGE QUANTITY FREIGHT

Master Box - Freight Shipping	22 boxes per 48" L x 40" W x 59" H skid
Master Box - Freight Weight	858 lbs (frame only) 717 lbs (frame & graphic)

## GRAPHIC TURN AROUND TIME

2 business days after proof approval for up to qty 20

AVAILABILITY	CA, PA, and PFC
--------------	-----------------



# ECONOROLL 33.5" SILVER

RETRACTABLE BANNER STANDS  
 PRODUCT CODE: ER33.5SLV



On Graphic On Frame



Front



Back



Econo Travel Bag

## PRODUCT DESCRIPTION

The Econo Roll delivers a professional looking display at an economical price. Set up and break down of the display takes seconds and conveniently stores in its included padded travel bag. Banner attached to the bottom of stand by double-sided tape and to the top by clamp bar.

DISPLAY DIMENSIONS	34.5" W x 80" H x 15" D
GRAPHIC SIZE	33.5" W x 80" H

## GRAPHIC MATERIAL

Super Flat Vinyl

## GRAPHIC FINISHING

5" Bleed at the bottom

## DISPLAY CONSTRUCTION

Sturdy Aluminum Construction

## SHIPPING WEIGHTS & DIMENSIONS

SINGLE BOX - 1 Unit	
Shipping Weight	7 lbs (stand only) 8 lbs (frame and graphic)
Shipping Dimensions	36" H x 5" W x 5" D
MASTER BOX - 6 Units	
Shipping Weight	38 lbs (stand only) 48 lbs (frame and graphic)
Shipping Dimensions	36" H x 13" W x 9" D

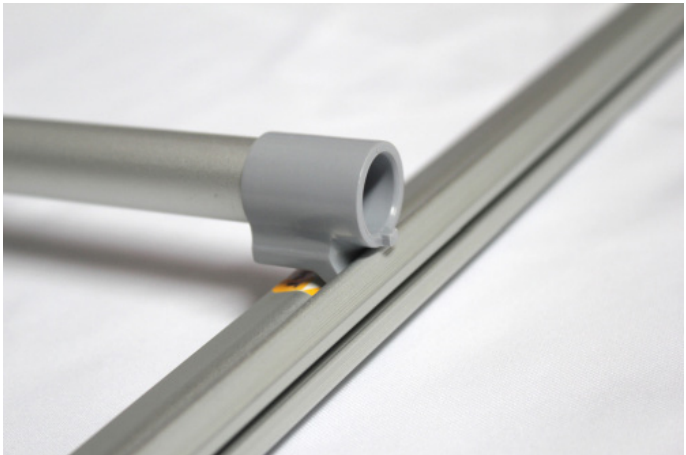
## LARGE QUANTITY FREIGHT

Master Box - Freight Shipping	28 boxes per 48" L x 40" W x 77" H skids
Master Box - Freight Weight	1,109 lbs (frame only) 1,389 lbs (frame & graphic)

## GRAPHIC TURN AROUND TIME

2 business days after proof approval for up to qty 20

AVAILABILITY	CA, PA, and PFC
--------------	-----------------





# ECONOROLL 33.5" BLACK

RETRACTABLE BANNER STANDS  
 PRODUCT CODE: ER33.5BLK



Front



Back



Econo Travel Bag

## PRODUCT DESCRIPTION

The Econo Roll delivers a professional looking display at an economical price. Set up and break down of the display takes seconds and conveniently stores in its included padded travel bag. Banner attached to the bottom of stand by double-sided tape and to the top by clamp bar.

DISPLAY DIMENSIONS	34.5" W x 80" H x 15" D
GRAPHIC SIZE	33.5" W x 80" H

## GRAPHIC MATERIAL

Super Flat Vinyl

## GRAPHIC FINISHING

5" Bleed at the bottom

## DISPLAY CONSTRUCTION

Sturdy Aluminum Construction

## SHIPPING WEIGHTS & DIMENSIONS

SINGLE BOX - 1 Unit	
Shipping Weight	7 lbs (stand only) 8 lbs (frame and graphic)
Shipping Dimensions	36" H x 5" W x 5" D
MASTER BOX - 6 Units	
Shipping Weight	38 lbs (stand only) 48 lbs (frame and graphic)
Shipping Dimensions	36" H x 13" W x 9" D

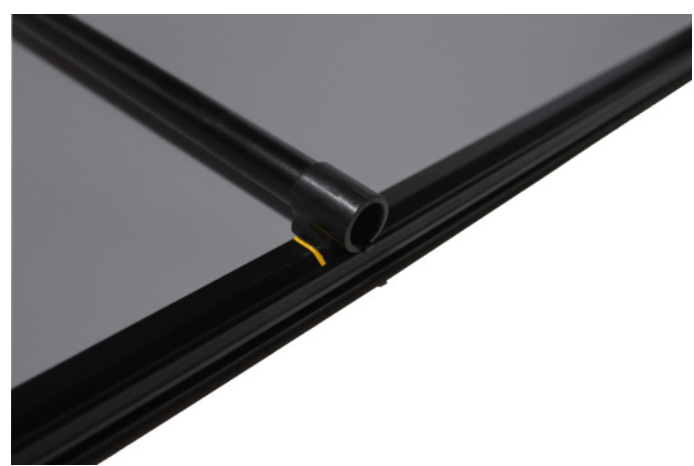
## LARGE QUANTITY FREIGHT

Master Box - Freight Shipping	28 boxes per 48" L x 40" W x 77" H skids
Master Box - Freight Weight	1,109 lbs (frame only) 1,389 lbs (frame & graphic)

## GRAPHIC TURN AROUND TIME

2 business days after proof approval for up to qty 20

AVAILABILITY	CA, PA, and PFC
--------------	-----------------



# ECONOROLL 36" SILVER

RETRACTABLE BANNER STANDS

PRODUCT CODE: ER36SLV



On Graphic On Frame



Front



Back



Econo Travel Bag

## PRODUCT DESCRIPTION

The Econo Roll delivers a professional looking display at an economical price. Set up and break down of the display takes seconds and conveniently stores in its included padded travel bag. Banner attached to the bottom of stand by double-sided tape and to the top by clamp bar.

DISPLAY DIMENSIONS	37" W x 80" H x 15" D
GRAPHIC SIZE	36" W x 80" H

## GRAPHIC MATERIAL

Super Flat Vinyl

## GRAPHIC FINISHING

5" Bleed at the bottom

## DISPLAY CONSTRUCTION

Sturdy Aluminum Construction

## SHIPPING WEIGHTS & DIMENSIONS

SINGLE BOX - 1 Unit

Shipping Weight	8 lbs (stand only) 9 lbs (frame and graphic)
Shipping Dimensions	36" H x 4" W x 4" D

MASTER BOX - 6 Units

Shipping Weight	48 lbs (stand only) 54 lbs (frame and graphic)
Shipping Dimensions	40" H x 13" W x 9" D

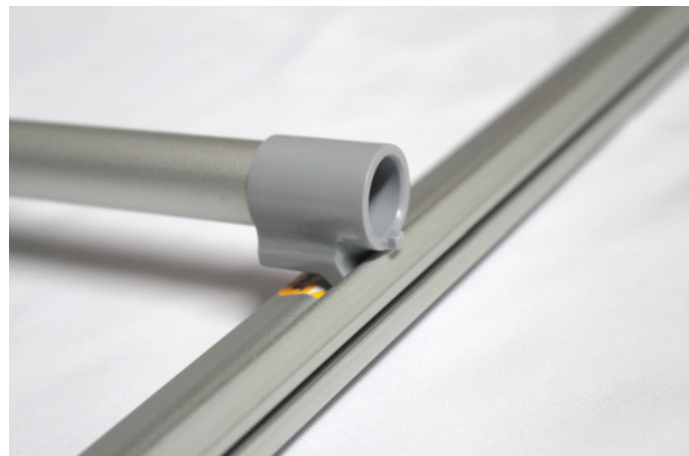
## LARGE QUANTITY FREIGHT

Master Box - Freight Shipping	22 boxes per 48" L x 40" W x 50" H skid
Master Box - Freight Weight	858 lbs (frame only) 717 lbs (frame & graphic)

## GRAPHIC TURN AROUND TIME

2 business days after proof approval for up to qty 20

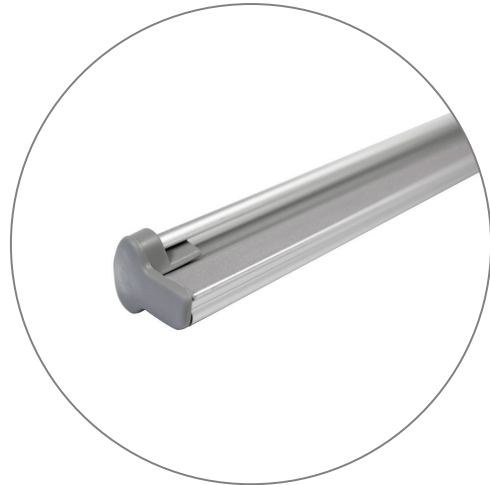
AVAILABILITY	CA, PA, and PFC
--------------	-----------------



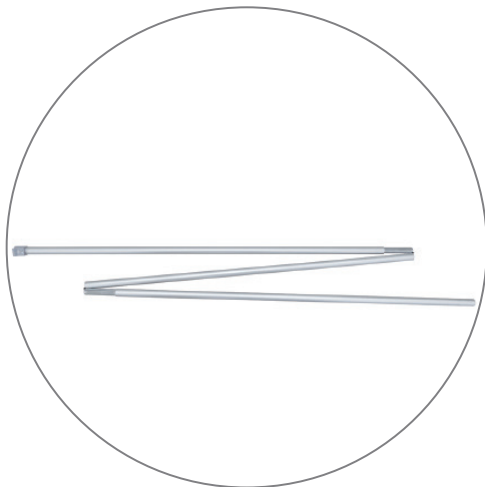
## PARTS LIST



(qty 1) Econoroll Retractable Stand



(qty 1) Clamp Bar

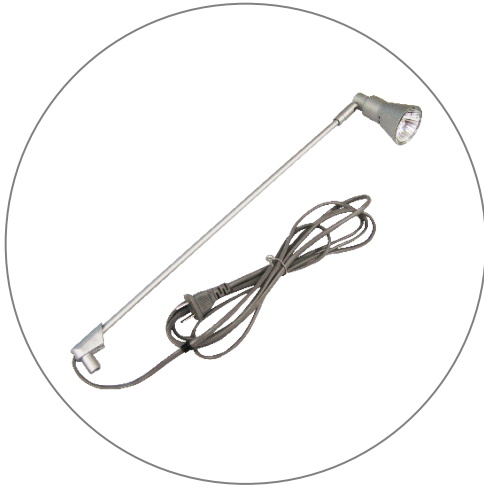


(qty 1) Support Pole



(qty 1) Econo Travel Bag

## ACCESSORIES



Silver Light (50 W)  
SLIGHT



Black Light (50 W)  
BLIGHT



Silver Clamp Light LED  
CLEDLIGHT



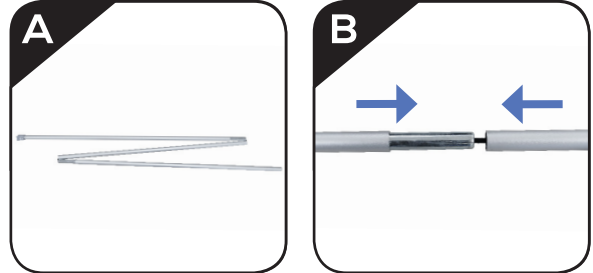
Silver Clamp Light (35 W)  
CLIGHT

# SET UP INSTRUCTIONS

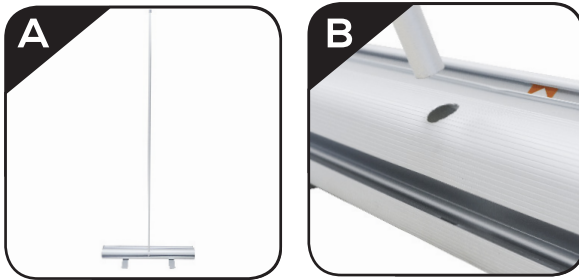
**Step 1**  
TWIST THE FEET.



**Step 2**  
ASSEMBLE TELESCOPIC POLE



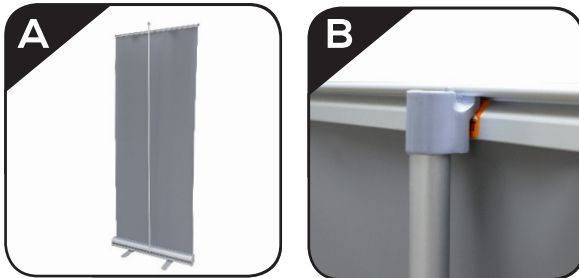
**Step 3**  
INSERT TELESCOPIC POLE INTO HOLE



**Step 4**  
PULL BANNER OUT OF THE BASE



**Step 5**  
ATTACH TELESCOPIC POLE TO THE CLAMP BAR



**Step 6**  
COMPLETE STAND.

