

# LIGHTBOX DISPLAYS

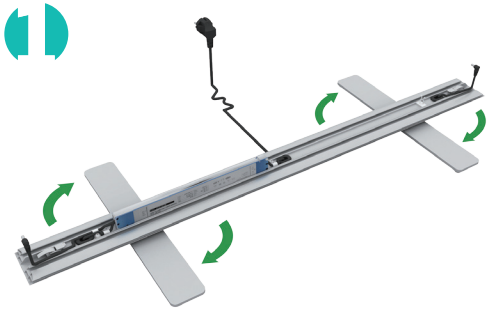
ONE CHOICE - 3 PACK LIGHTBOX DISPLAY

DOUBLE-SIDED

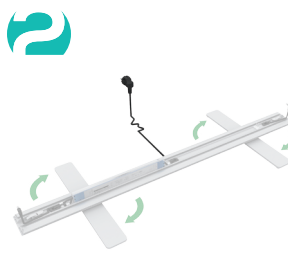
PRODUCT CODE: OC-3LIGHTBOXG2



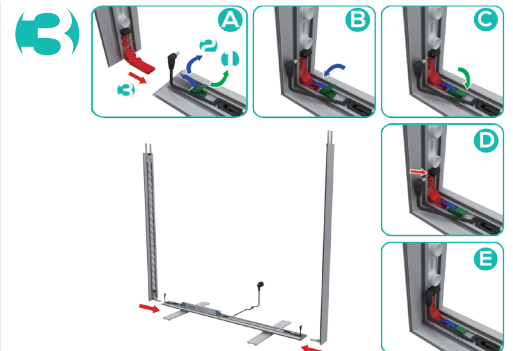
## INSTRUCTIONS



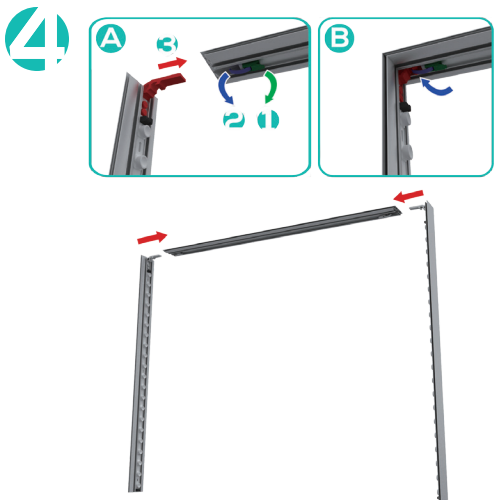
- See numbers on each extrusion piece. Match number together (e.g. 3-3). From the bottom extrusion, twist the feet.



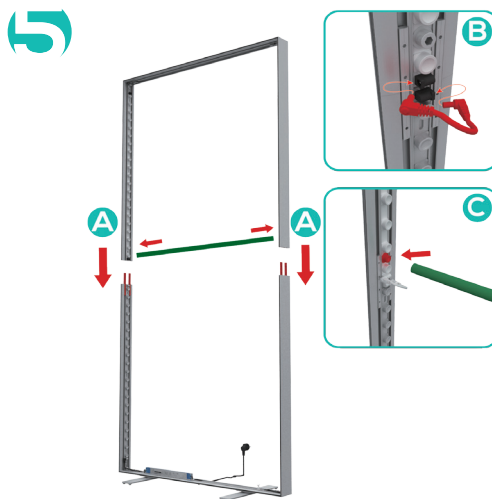
- Connect the transformer power cords together. Then tighten the knob to secure the cords.



- Slide side extrusions into bottom extrusion channel. Use latch to press down on the L connector. Then press down the second latch to secure. Connect LED strip cable to LED edge light connectors.



- Slide side extrusions into top extrusion channel. Use latch to press down on the L connector. Then press down the second latch to secure.



- Place the top half of the extrusion and slide onto the split connector of the bottom half extrusion. Connect LED Wire Connector to LED strips. Install Support Pole on each side of the inner frame.



- In each corner, insert the silicone edge beading into the groove of the frame. Then insert the the remainder of the beading on each side. Repeat build for other frames.



Scan QR Code To View More Resources.

**NOTE:** Instructions can be seen on the Light Box case.

# LIGHTBOX DISPLAYS

ONE CHOICE - 3 PACK LIGHTBOX DISPLAY

DOUBLE-SIDED

PRODUCT CODE: OC-3LIGHTBOXG2



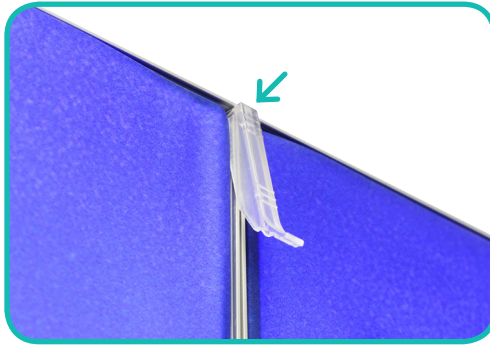
## INSTRUCTIONS

7



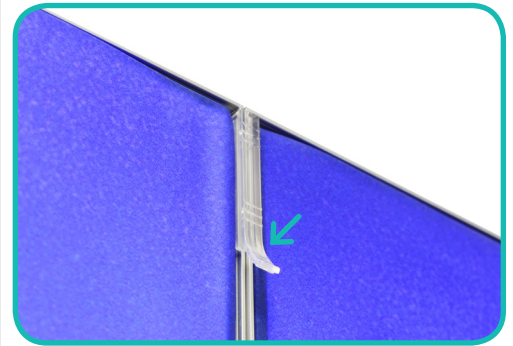
- Place the frames side by side. Make sure the frames are flush together.

8



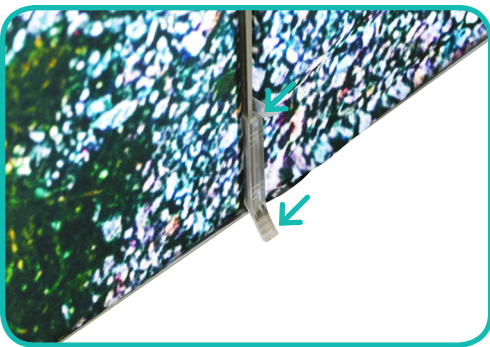
- Insert the Connection Clip on the top frame between the top grooves by pressing down on one end of the clip.

9



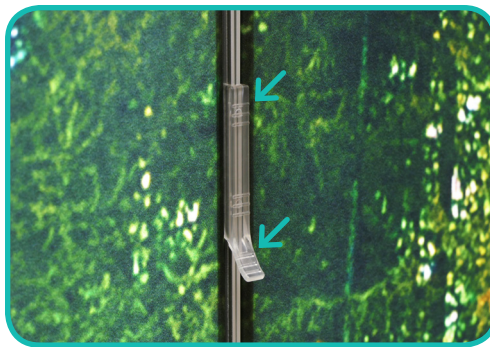
- Then press down the end of the tip. Repeat on the backside of the frame.

10



- Insert the Connection Clip on the bottom frame between the grooves by pressing down on one end of the clip. Then press down the end of the tip. Repeat on the backside of the frame.

11



- Insert the Connection Clip on the middle frame between the grooves by pressing down on one end of the clip. Then press down the end of the tip. Repeat on the backside of the frame.\*

12



- Repeat connection process for other side of the frame. Complete connecting the frames. Then, plug the power cords to nearest outlet to light up frame.



Scan QR Code To View More Resources.

**\*TROUBLESHOOT:** If a certain section in the middle frames are not flushed, find the closes flushed frames above the middle section. Then insert the clip and slide the Connection Clip down in the middle of the frames to secure.