

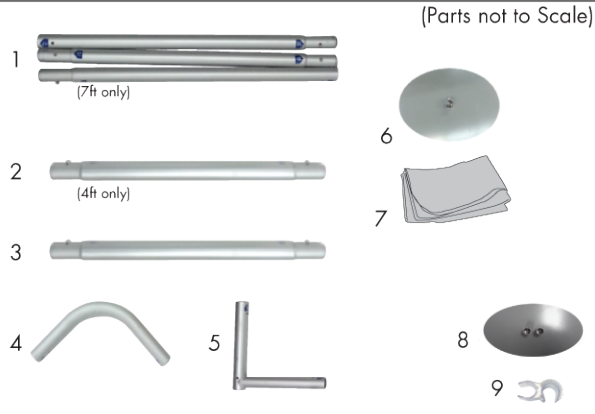
# Eurofit Barrier 4ft and 7ft

## Product Parts

- 1 - 3-piece Shock-Corded Horizontal Bar (x2)  
(7ft Only)
- 2 - Top and Bottom Horizontal Bar (x2)  
(4ft Only)
- 3 - Vertical Side Bar (x2)
- 4 - Top Corner (x2)
- 5 - Bottom Corner (x2)
- 6 - Foot (x2)
- 7 - Graphic

## Optional Extension Kit (sold separately)

- 8 - Connector Foot
- 9 - Connector (x2)



## Display Set-Up

### Step 1

If assembling the 7ft display, unfold the 3 Shock-Corded Bars (1) and secure them with their push buttons.

Connect the frame pieces by matching the numbers on the end of each pole, using the push buttons.



### Step 2

Connect the Feet (6) to the bottom of the Bottom Corners (5).

### Step 3

Fit the Graphic (7) to the frame and pull it down evenly.

## Connecting Multiple Displays

Remove Feet (6) from one end of two frames. Connect bottom corners to optional Connector Foot (8). Once Graphics (7) are applied, add Connectors (9) to secure the corner.



## Storage and Care

Store in a cool dry location. To clean the frame, wipe with a damp cloth. Wash the graphic on a cold, gentle cycle. Air-dry only and never dry clean. Steam Clean for wrinkles.