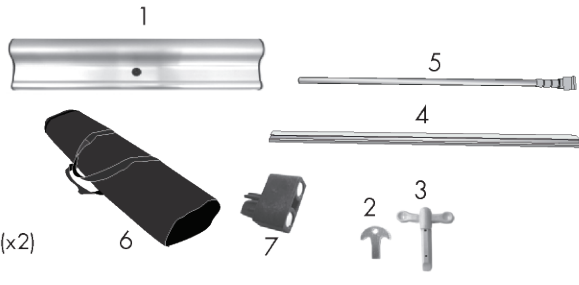


Magnalink Retractor

Product Parts

- 1 - Base
- 2 - Detensioning Key
- 3 - Tensioning Key
- 4 - Snap Rail
- 5 - Telescoping Pole*
- 6 - Case
- 7 - Magnetic Snap Rail Endcap (x2)



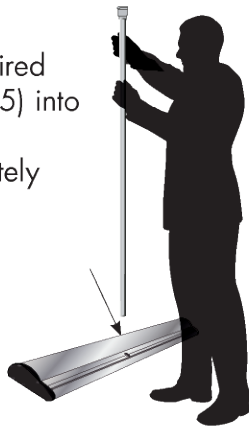
*Two poles supplied with 60" hardware. 16" hardware (Floor or Tabletop) comes with single a shock-corded and Telescoping pole.



Display Set-Up

Step 1

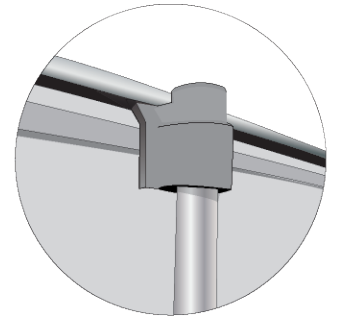
With Base (1) placed at your desired location, insert Telescoping Pole (5) into hole on the back of the Base (1). Ensure the pole is seated completely into the bottom of the Base.



Step 2

Lift the Snap Rail (4) up from the base, pulling out the graphic. Carefully continue pulling evenly and attach the Snap Rail (4) to the top of the Telescoping Pole (5), using the groove.

Keep a firm grip on the snap rail and be careful not to let the graphic roll back into the base.



Step 3

To raise the 16" graphic further, unlock the flip lever on Telescoping Pole (5), raise pole and relock flip lever.

For the 33.5" and 60", follow this step for the remaining 3 levers.



Multi Panel Display Set-Up

Step 1

Butt Bases (1) together and adjust graphics to be same level. Snap Rails (4) and Bases (1) will magnetically connect together.

Height adjustments on the 16" floor version are limited in comparison to the 33.5" and 60".

To make the 16" level with the 33.5" or 60" displays, remove the screw-knobs from the bottom of the hardware.



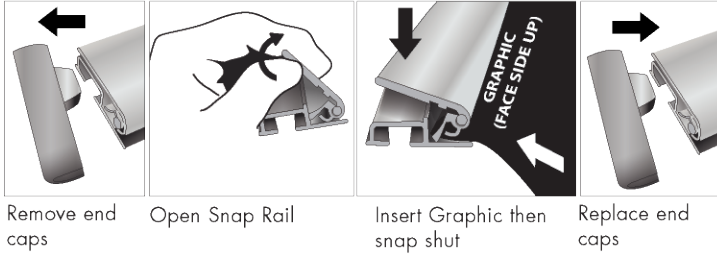
Note: connection will not be seamless.

Magnalink Retractor

Banner Install/Replacement ONLY

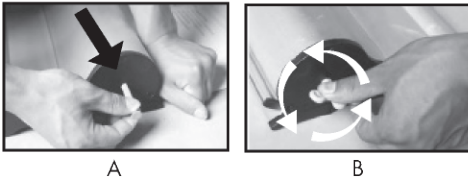
Step 1

Starting on a clean flat surface remove both Magnetic Snap Rail Endcaps (7) from the Snap Rail (4) and open it. Fully insert the top edge of the graphic into the groove of the Snap Rail (4) and snap it shut. Replace endcaps.



Step 3

Slightly pull graphic and firmly hold onto it and remove the spring key (A) (located on right side of Base (1)). Allow the graphic to go into the base. If you desire more tension you can fully insert Tensioning Key (B)(3) into opening. Slowly turn Tensioning Key (3) until enough tension is created, you will hear the spring "click" as you turn the key.



Step 2

Align the graphic with printed side up to the top of the hook on the leader. Firmly and evenly press the loop on graphic onto the hook of the leader.



Replacement of Existing Graphic

Step 1

If you are replacing an existing graphic, turn the Base (1) upside down and locate the Tension Release label and slot. Insert the Detensioning Key (2) and press. Expect that the detensioning of the spring will be loud. Once the Base (1) is detensioned repeat steps 1 through 3 for installation.



Storage and Care

Place all product parts into Carry Case and store in a cool dry location. To clean non-graphic hardware, wipe with a damp cloth.