

# Stellar Retractor

**Product Parts**

- 1 - Base
- 2 - Banner Rail
- 3 - Telescoping Pole
- 4 - Pin (inside)
- 5 - Loop Velcro
- 6 - Banner

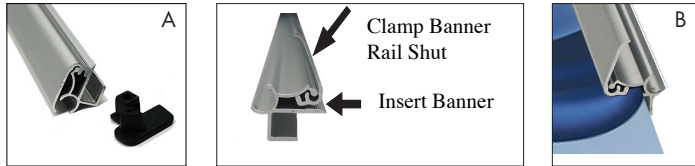
**\*Do Not Pull Pin Until Directed**



## Banner Install

### Step 1

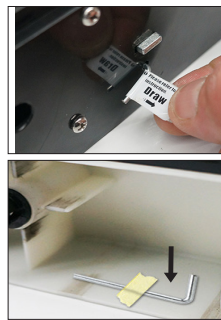
Remove both End Caps (A) from the Banner Rail (2) and snap it open. Fully insert the top edge of the Banner into the groove of the Banner Rail (2) and snap it shut (B).



### Step 3

Maintain tension on the banner while slowly removing the Pin (4). Allow the banner to gently roll into the canister.

**\*\*Store the Pin on the end cap of the base for future graphic changes.**



### Step 5

Insert the Telescoping Pole (3) into the hole in the center of the base. Ensure the pole is seated completely into the bottom of the base.



### Step 2

Remove the protective paper from the provided Loop Velcro (5) and adhere it to the bottom back of the banner. On the Base (1) remove the strip of protective paper to expose the velcro of the leader. Lay the Banner flat, printed side up and align the banner to the top of the velcro leader. Press the velcro of the banner onto the velcro of the leader.



### Step 4

If unit is un-level, adjust the four feet up or down by turning the feet.



### Step 6

Stand facing the back of the Base (1) and gently pull the Banner Rail (2) upwards. Insert the groove of the Banner Rail (2) into the groove at the top of the Telescoping Pole (3).



## Storage & Care

Place all product parts into Carry Case and store in a cool dry location. To clean hardware, wipe with damp cloth.