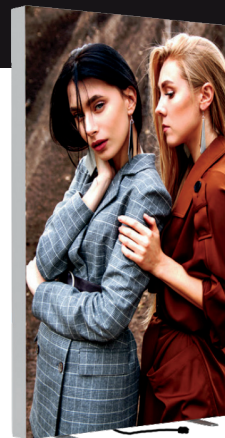
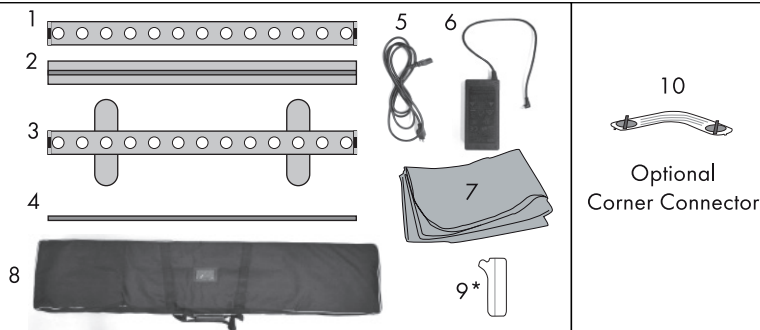


Fusion Glo

Product Parts

- 1 - Top Assembly
- 2 - Vertical Supports (x4) (4'x4' Model has x2)
- 3 - Bottom Assembly with Feet
- 4 - Center Support Pole (Except 4'x4' Model)
- 5 - Power Cord
- 6 - Power Cord Adapter
- 7 - Graphics (x2)
- 8 - Soft Case
- 9 - No-Gap Connectors (x4)*
- 10 - Optional Corner Connector



Display Set-Up

Step 1

Set Bottom Assembly (3) on floor and rotate both feet 90 degrees.

Step 2

Assemble Vertical Supports (2) to Bottom Assembly with Feet (3) by matching numbered stickers.

Step 3

Assemble Top Assembly (1) to each side of the Vertical Supports (2) by matching numbered stickers.

LED lights will NOT illuminate if not assembled following the numbered stickers.

Step 4

Insert the graphic's gasket edges into the frame, by inserting each corner into the frames four corners, then work around the frame alternating opposite sides until complete. **Loop** for removing Graphics (7) will be at bottom corner.

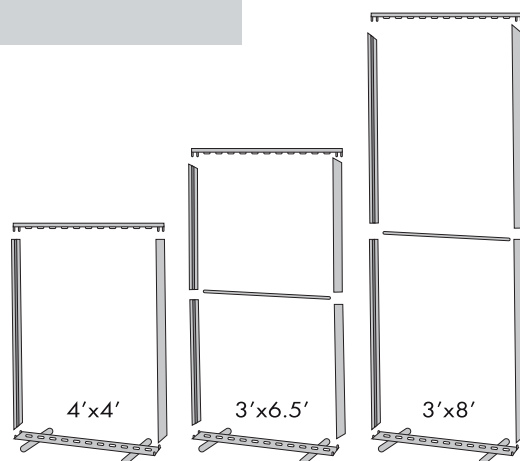
Step 5

Attach female end of Power Cord Adapter (6) to male connection located on the underside of the Bottom Assembly with Feet (3). Plug female end of Power Cord (5) into Power Cord Adapter (6). Plug Power Cord (5) into power source. The top and bottom of frame will light up when plugged in if correctly assembled.

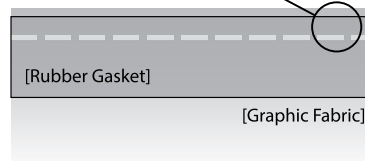
*The No-Gap Connectors allow for multiple frames to be connected.

Optional Corner Connector #254850

The Optional Corner Connector (10) can be used to connect multiple same sized hardware allowing the frames to make a 90 degree turn.



Insert stitched side of the gasket first



To remove the graphics, pull the loop found on the corner.



Two frames connected with No-Gap Connectors (9).

Storage & Care

Store in a cool, dry place. To clean hardware, wipe with a damp cloth. Do NOT dry clean graphic, can Steam Clean wrinkles.