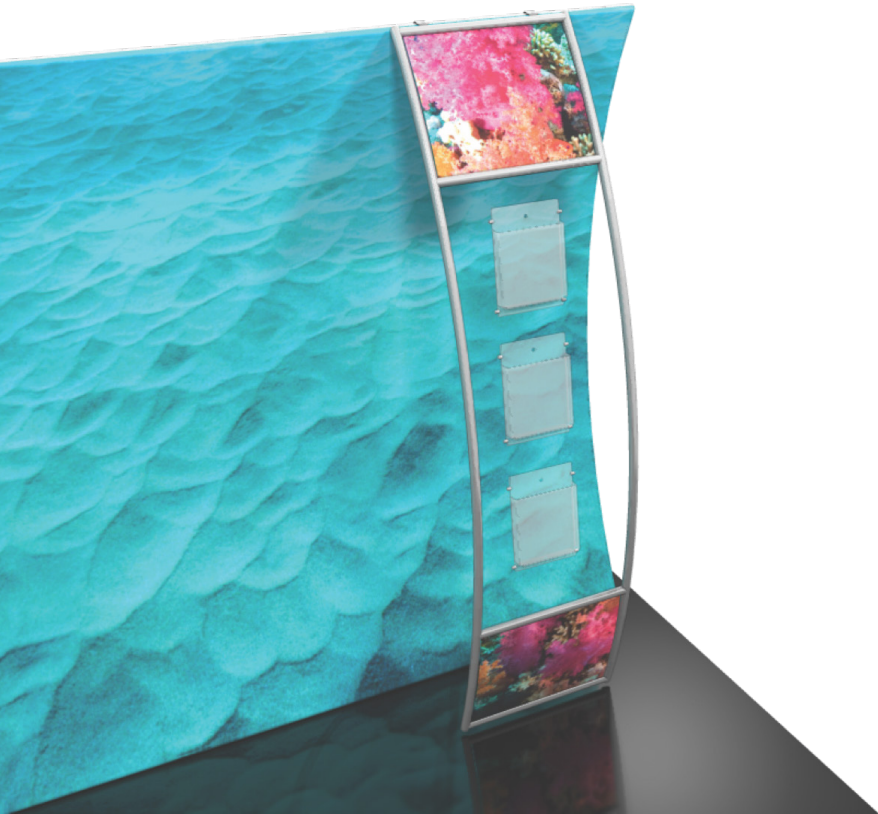


Formulate Literature Holder

FMLT-WLLH

Formulate® accents enhance the functionality of any 10ft or 20ft backwall and add more real estate for messaging too! With monitor supports, literature pockets, shelves, tables, counters and more, you are sure to find the accent that best suits your needs.



We are continually improving and modifying our product range and reserve the right to vary the specifications without prior notice. All dimensions and weights quoted are approximate and we accept no responsibility for variance. E&OE. See Graphic Templates for graphic bleed specifications.

features and benefits:

- State-of-the-art brushed 30mm aluminum tube frame with snap button assembly
- Three literature pockets
- Top and bottom printed infill panels
- Kit includes: one frame, two panel graphics, three literature pockets, and one wheeled molded storage case
- Lifetime hardware warranty against manufacturer defects

dimensions:

Hardware	Graphic
Assembled unit: 23.6"w x 93.4"h x 17.43"d 600mm(w) x 2372mm(h) x 443mm(d) Approximate weight (includes graphics): 16 lbs / 8 kgs	Refer to related graphic template for more information. Visit: www.exhibitors-handbook.com/graphic-templates
Shipping	additional information:
Packing case(s): 1 OCH Shipping dimensions: 50"l x 26"h x 12"d 1270mm(l) x 660mm(h) x 305mm(d) Approximate shipping weight 38 lbs / 18 kgs	Graphic Material: UV print on 3mm white PVC When included in a larger kit, a different packaging solution will be listed to accommodate all contents of the kit. Individual packaging no longer provided.

Included In Your Kit

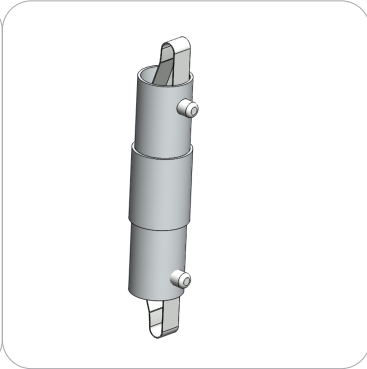
Tools, Components, & Connectors



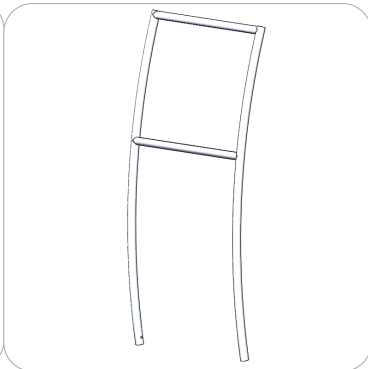
HEX KEY SET x1



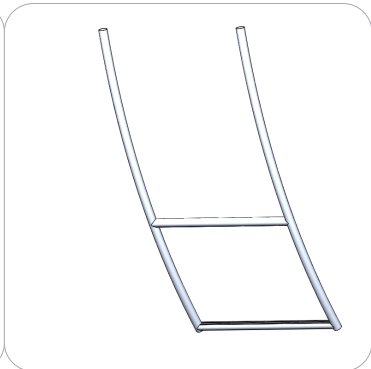
TCP-3030 x2



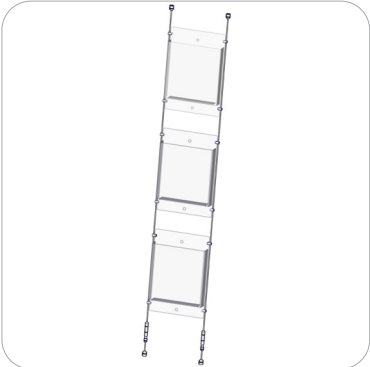
WL-T3 x2



WL-T1 x1

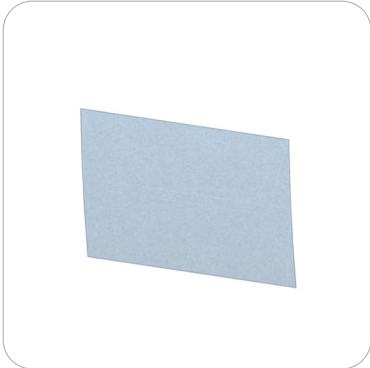


WL-T2 x1

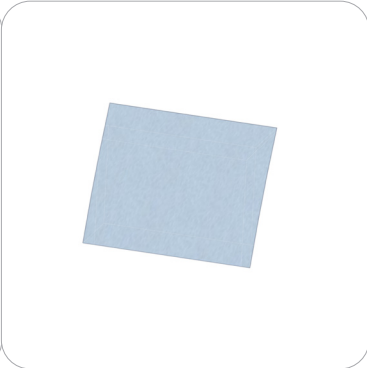


CK3 x1

Graphics



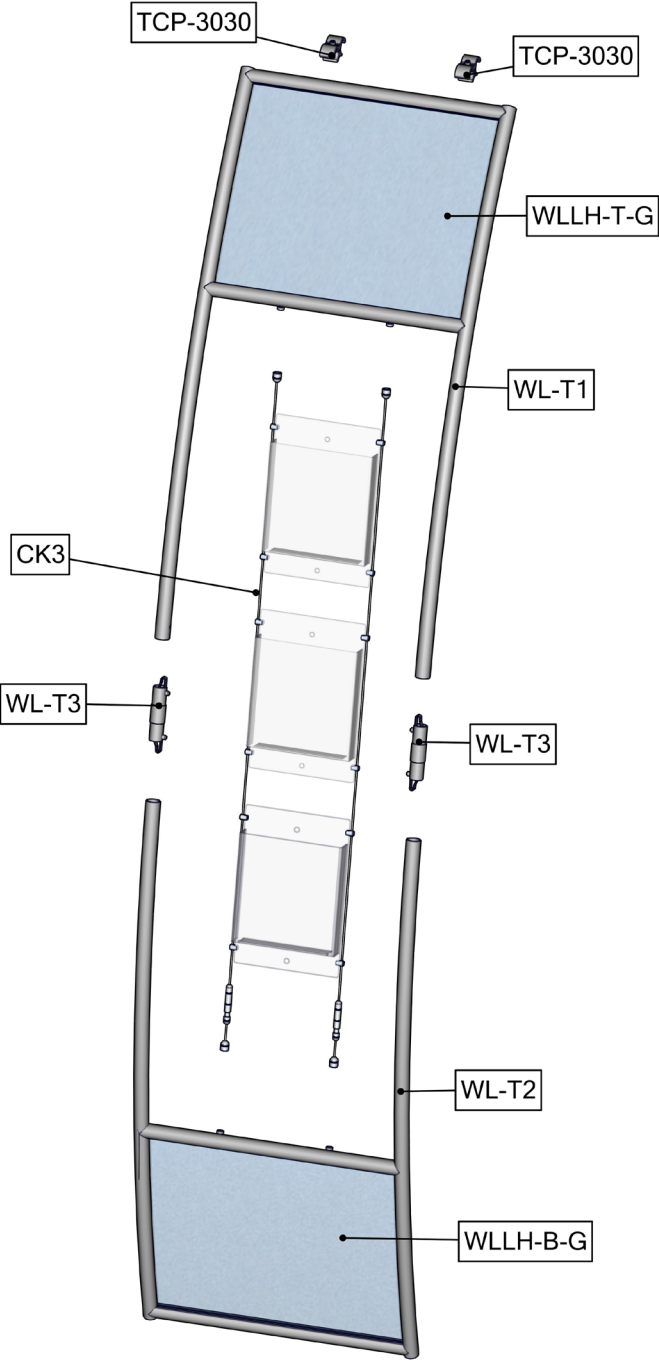
FMLT-WLLH-B-G x1



FMLT-WLLH-T-G x1

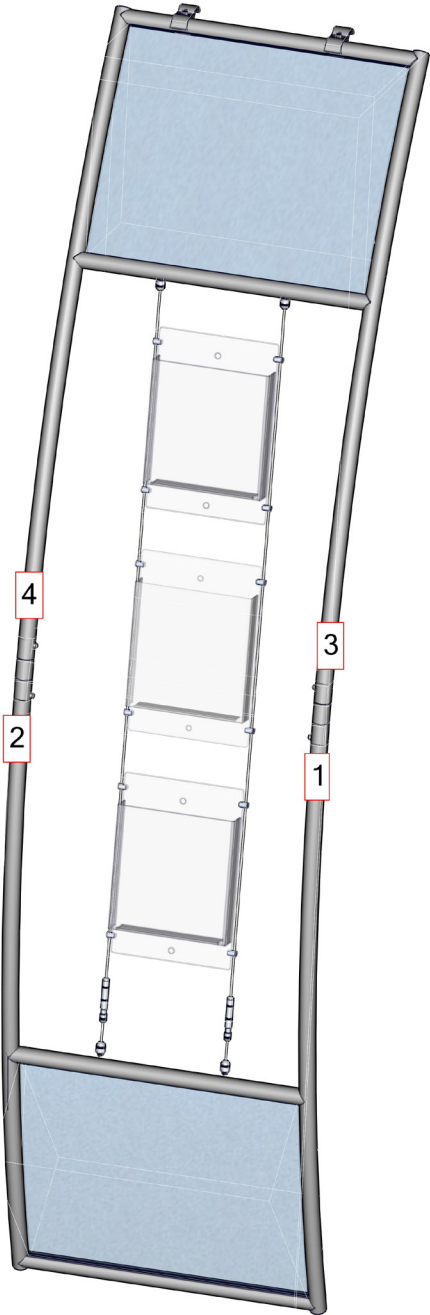
Exploded View

FMLT-WLLH



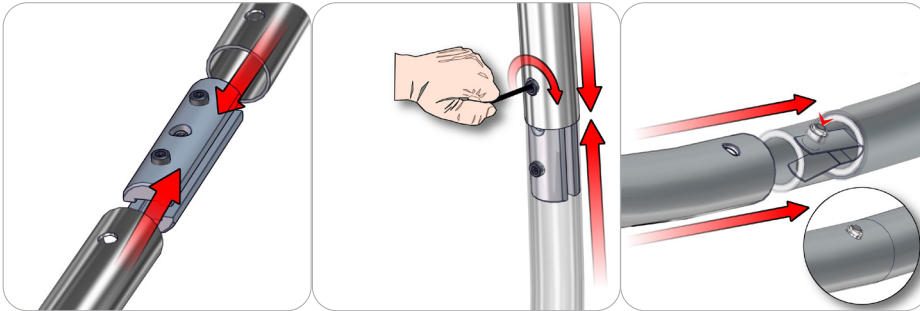
Labeling Diagram

FMLT-WLLH



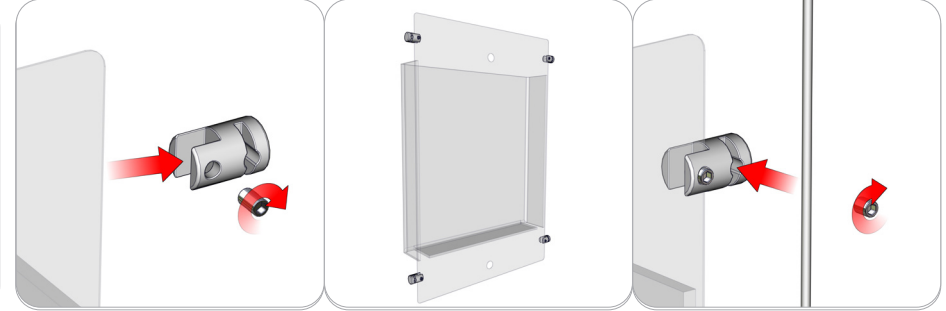
Connection Methods

Connection Method 1: WL-T3 / WL-T2 / WL-T1



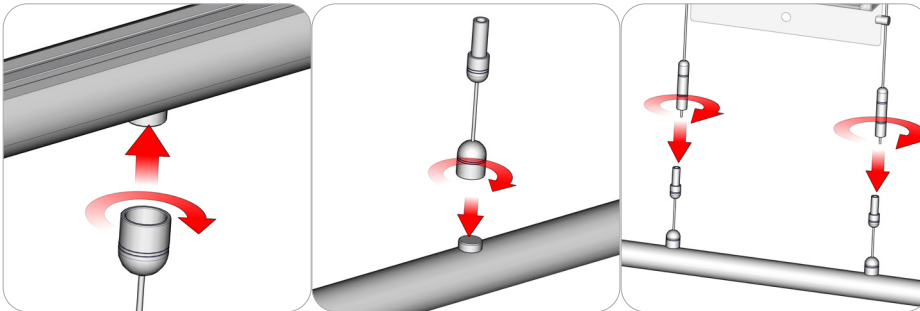
For spigot connections, compress the unlocked connector and slide into the tube lock access hole. Lock both screws carefully using your allen key tool. Be sure to lock securely, but do not over tighten. For snap button connections, locate the snap button on the connector or swage tube. Locate the hole on the corresponding tube. Press the snap button with your thumb and slide the tube and connector together so that the snap button snaps fully into the lock hole. To disassemble, press the snap button and pull apart.

Connection Method 2: ABH-01 / CKPS4 / CKCM



First, with a 2mm hex key, attach four of the CKPS4's onto the sides of the ABH-01 at channel 1, do not over tighten the screw. Second, make sure that all CKPS4's channel 2's face the same way. Third, put the CKCM cable in channel 2 of the CKPS4's and secure it with the set screw, do not over tighten. Adjust, the assembly by simply loosening the set screws.

Connection Method 3: CK3 / CKCM



First, take the top cable ends of the CK3 kit and screw the shells onto the frame. Second, take the bottom 2 short cables of the CK3 kit and screw those onto the frame. Third, take the bottom 2 long cables and screw them onto the short cable. Do not over tighten. Make sure the cable has tension.

Connection Method 4: TCP-3030



First, start by attaching the brackets to the literature holder. 2nd, tighten with Allen Key Tool. 3rd, Attach the literature holder to the frame using the brackets. Use the labeling diagram and explode view. make sure not to over tighten the brackets with Allen Key Tool.

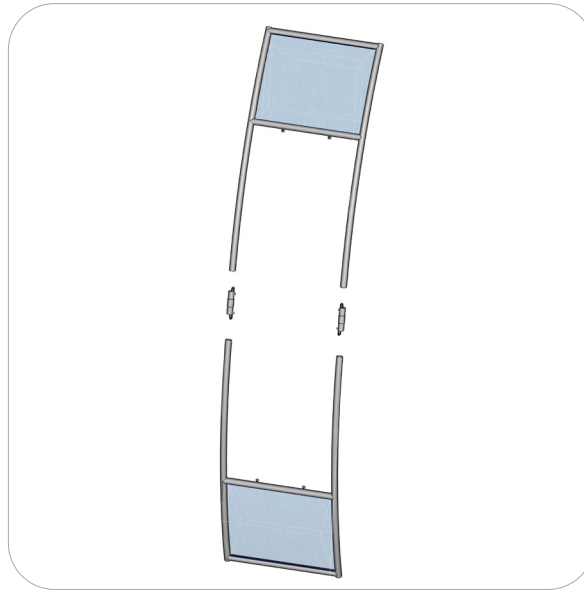
Kit Assembly

Step by Step

Step 1.

Gather the pieces and hardware needed to assemble the 2 frames together. Use the exploded view and labeling diagram for part numbers

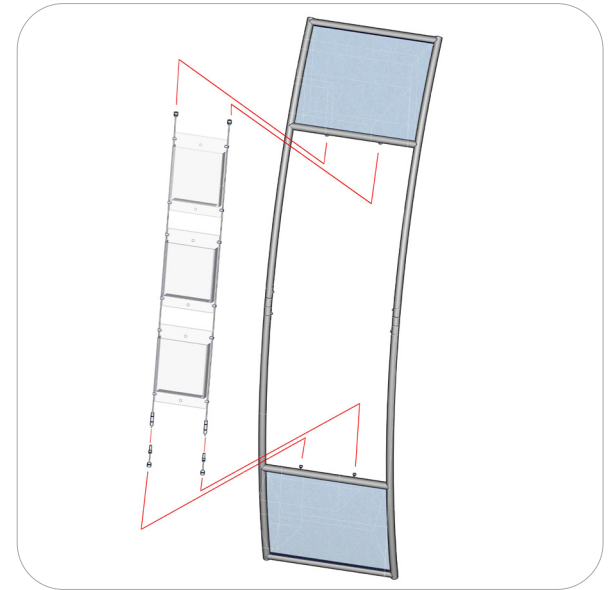
Reference Connection Method 1 for more details.



Step 2.

Gather the components to build the Literature holder in the center. Use the Exploded View and labeling diagram for part numbers.

Reference Connection Method(s) 2 and 3 for more details.



Step 3.

Gather the components to merge the 2 frames. Use the Exploded View and the Labeling Diagram for part labels.

Reference Connection Method 4 for more details.

