

Formulate Accent Ladder 10

FMLT-WL10

Formulate® Master Accents enhance the functionality of many Formulate Master 10' and 20' backwalls and add more real estate for messaging too! With monitor supports, literature pockets, shelves, tables, counters, and more, you are sure to find the accent that best suits your needs. Side tables and graphic headers are also available.



We are continually improving and modifying our product range and reserve the right to vary the specifications without prior notice. All dimensions and weights quoted are approximate and we accept no responsibility for variance. E&OE. See Graphic Templates for graphic bleed specifications.

features and benefits:

- Premium aluminum tube frames with spigot assembly
- Easy to store and ship
- Quick to set up
- Rectangular shaped fabric graphics
- Lifetime limited hardware warranty against manufacturer defects

dimensions:

Hardware

Assembled unit:
40"w x 92.25"h x 25.59"d
1016mm(w) x 2344mm(h) x 650mm(d)

Approximate weight with cases:
67 lbs / 31 kgs

Graphic

Refer to related graphic template for more information.

Visit:
www.exhibitors-handbook.com/graphic-templates

Shipping

Packing case(s):
1 OCH

Shipping dimensions:
50"l x 26"h x 12"d
1270mm(l) x 661mm(h) x 305mm(d)

Approximate total shipping weight:
89 lbs / 41 kgs

additional information:

Graphic material:
Dye-sublimation power stretch fabric with loop velcro

Shelf Dimensions:
33"w x 1"h x 11"d

Small monitors sizes: 17" - 37"
Max monitor weight of 40 lbs.

When included in a larger kit, a different packaging solution will be listed to accommodate all contents of the kit. Individual packaging no longer provided.

Shelf Colors:



silver



black



mahogany



natural

Included In Your Kit

Tools, Components, & Connectors



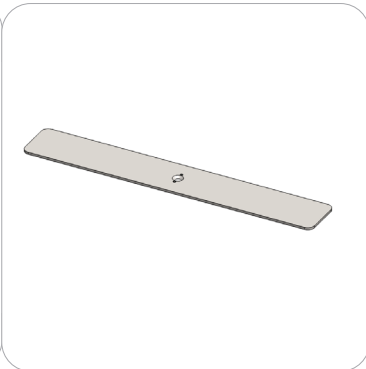
ALLEN KEY SET x1



ES30 x18



TCH-30-B2B-100-SD x2



PLT-BP-LN114-S2-650 x2



TC-30-90T x2



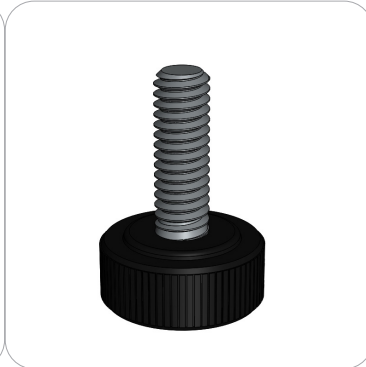
LN114-SCRW x2



TUBE-SM-MB x1

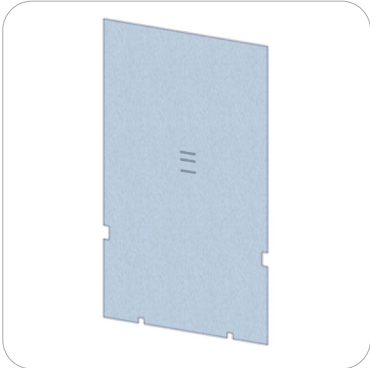


SHLF-FMLT-WL10 x1



8-32 X 5/8" THUMB SCREW x8

Graphics



FMLT-WL10-G x1

Included In Your Kit

Tubes



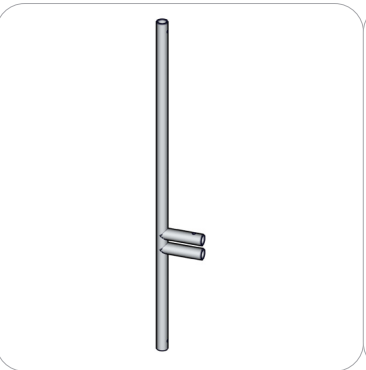
WL10-T1 x1



WL10-T2 x1



WL10-T3 x3



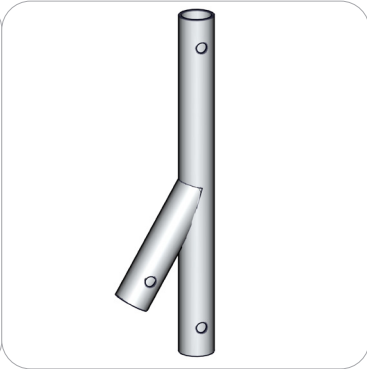
WL10-T4 x2



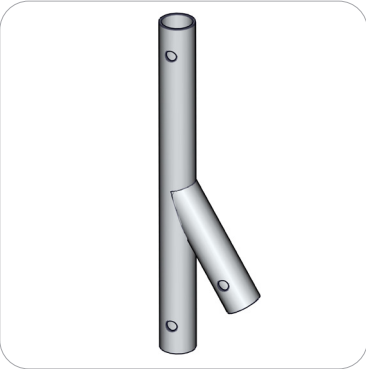
WL10-T5 x1



WL10-T6 x1



WL10-T7 x1



WL10-T8 x1



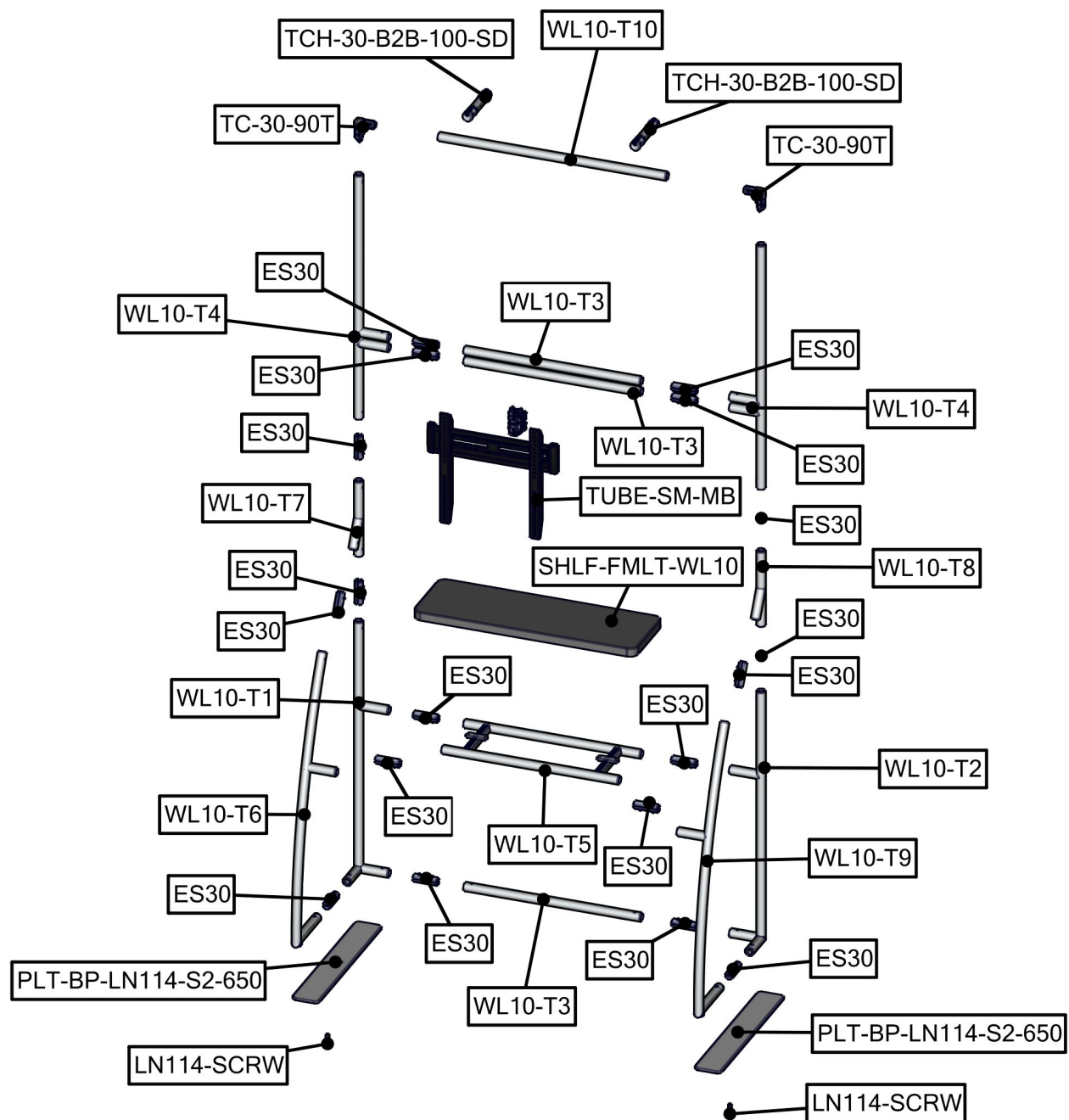
WL10-T9 x1



WL10-T10 x1

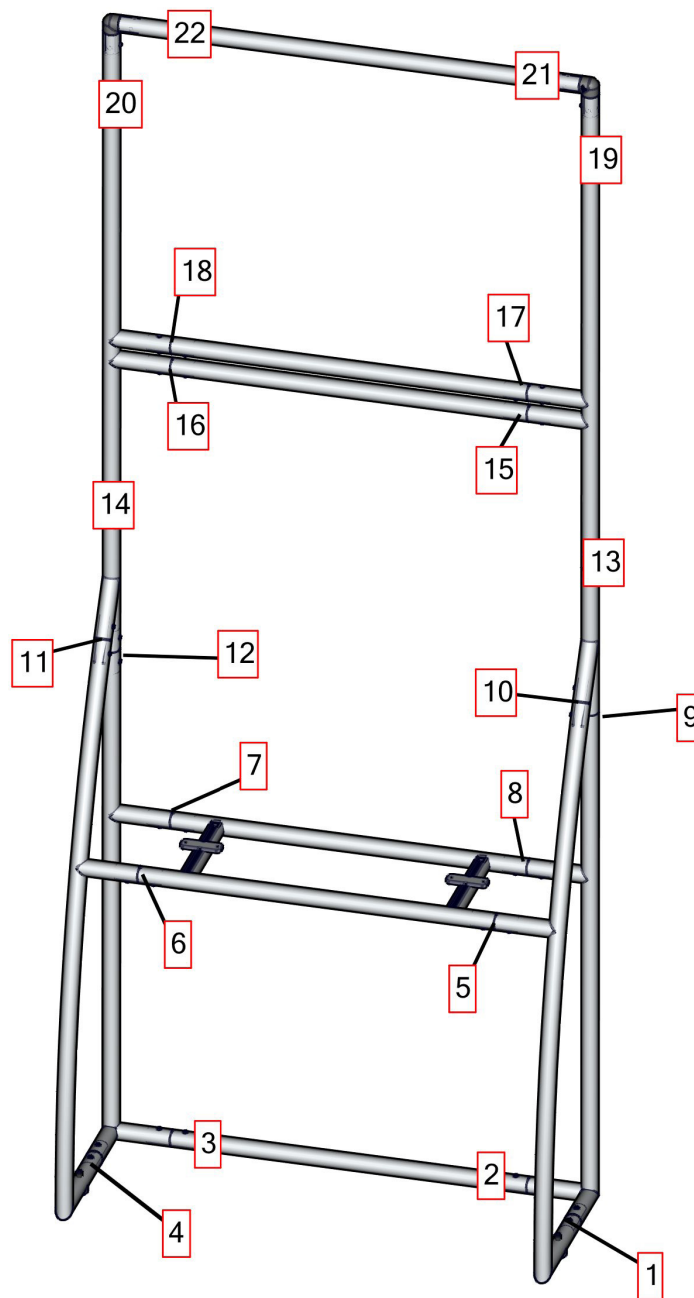
Exploded View

FMLT-WL10



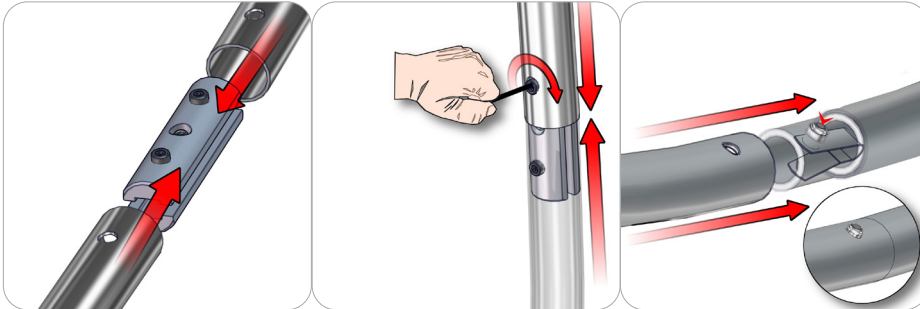
Labeling Diagram

FMLT-WL10



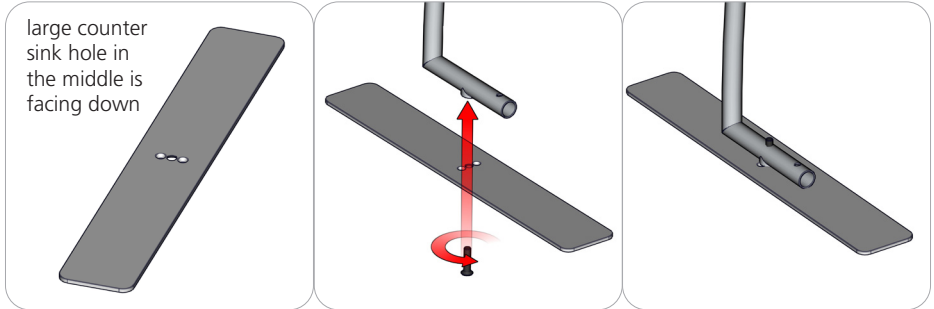
Connection Methods

Connection Method 1: ES30 / ES50 / SNAP BUTTONS



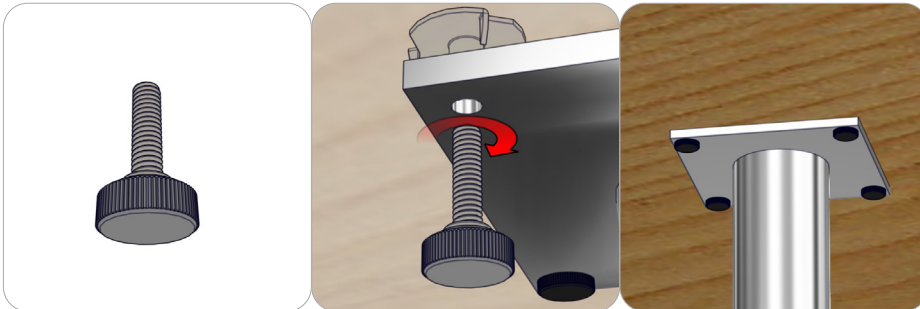
For spigot connections, compress the unlocked connector and slide into the tube lock access hole. Lock both screws carefully using your allen key tool. Be sure to lock securely, but do not over tighten. For snap button connections, locate the snap button on the connector or swage tube. Locate the hole on the corresponding tube. Press the snap button with your thumb and slide the tube and connector together so that the snap button snaps fully into the lock hole. To disassemble, press the snap button and pull apart.

Connection Method 2: PLT-BP-LN114-S2-650



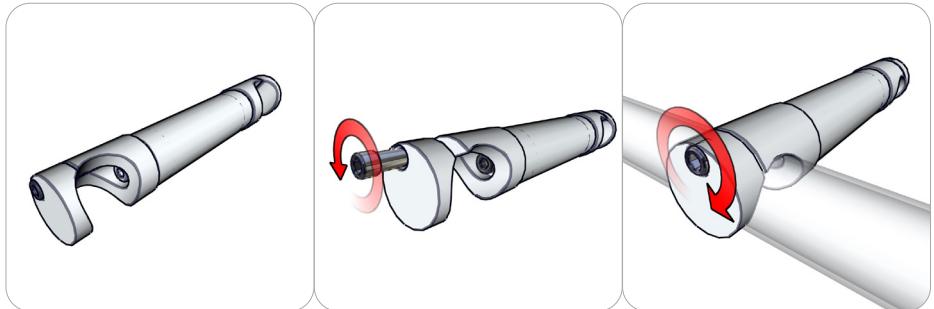
First, make sure you have the stabilizing base plate with the large counter sink hole facing down for a flush finish when inserting the screw from the under side. Second, fasten the plate onto the tube with the installed threaded insert. Use the provided allen key tool to make a tight fit. Do not over tighten. Loosen the screw to rotate the plate.

Connection Method 3: SHLF-FMLT-WL10 / Thumb screw



First, rest and align the under side of the shelf onto tube 5 mounting plates. Second, use the thumb screws provided to fasten the shelf onto tube 5 mounting plates.

Connection Method 4: TCH-30-B2B



First, use the allen key tool to loosen the end cap screws on each clamp. Do not remove them. Second, apply the clamps onto your frames and tighten the screw. Do not over tighten. Loosen the screws to adjust them.

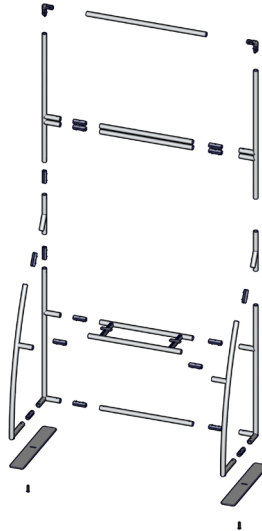
Kit Assembly

Step by Step

Step 1.

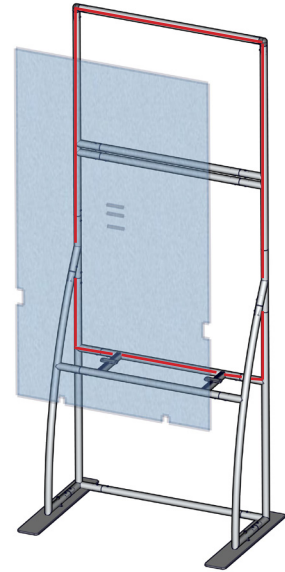
Gather the components to build the frame. Use the Exploded View and the Labeling Diagram for part labels.

Reference Connection Method(s) 1 and 2 for more details.



Step 2.

Apply hook velcro to the front face of the frame (red lines). Velcro apply the fabric graphic panel.



Step 3.

Gather the components to attach the monitor mount and the shelf. Use the Exploded View for part labels. The graphic panel has 3 slits for tube clamps and cable wires.

Reference the monitor mount supplemental sheets for more details and Connection Method 3 for the shelf.



Step 4.

Gather the components to attach the frame to your backwall. Use the Exploded View and the Labeling Diagram for part labels.

Reference Connection Method(s) 4 for more details.

Attach your monitor mount onto the bracket from step 3. Setup is complete.



Monitor Bracket Instructions

Tube Applications



TUBE-SM-MB

Sizes: 17" - 37"

Max weight varies per application

Assembled unit:

9"w x 16"h x 1.4"d
230mm (w) x 410mm (h) x 35mm (d)

Shipping dimensions:

14"l x 6"h x 4"d
356mm (l) x 152mm (h) x 102mm (d)

Approximate total shipping weight:

6 lbs / 2.7 kgs

VESA:

75 x 75 - 200 x 200mm



TUBE-M-MB

Sizes: 32" - 55"

Max weight varies per application

Assembled unit:

16"w x 16"h x 1.4"d
410mm (w) x 410mm (h) x 35mm (d)

Shipping dimensions:

24"l x 4"h x 4"d
610mm (l) x 102mm (h) x 102mm (d)

Approximate total shipping weight:

7 lbs / 3.2 kgs

VESA:

100 x 100 - 400 x 400mm



TUBE-LG-MB

Sizes: 40" - 65"

Max weight varies per application

Assembled unit:

24"w x 16"h x 1.4"d
610mm (w) x 410mm (h) x 35mm (d)

Shipping dimensions:

28"l x 6"h x 6"d
711mm (l) x 152mm (h) x 152mm (d)

Approximate total shipping weight:

8 lbs. / 3.6 kgs

VESA:

100 x 100 - 600 x 400mm

Included hardware:



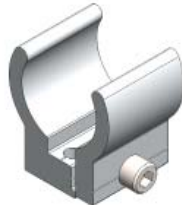
ACC60

x2



TCH-30

x2



TC-30MM-SILVER

x2



1/4"-20 x 1"

BOLT-1

x4



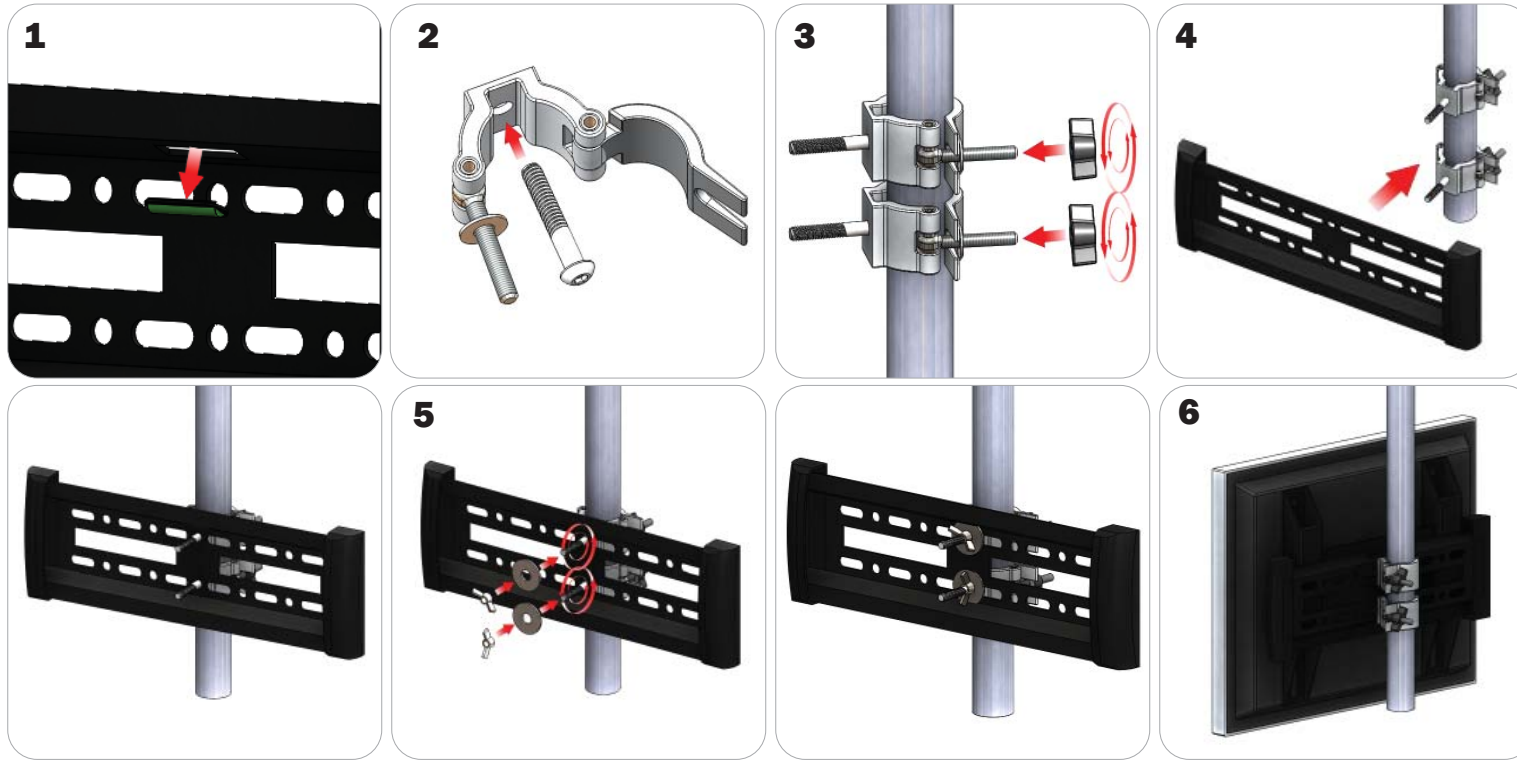
1/4"-20

Flange Wingnut

x4

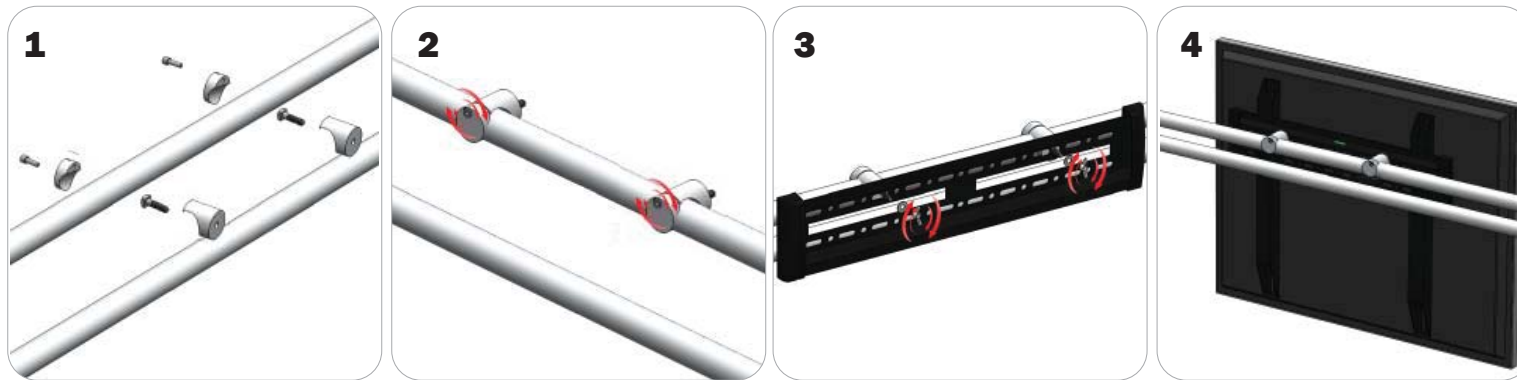
TUBE CONNECTION

ACC60 Clamp Connection



Locate all components needed to assemble the monitor mount with the ACC60 tube method. You will need (1) monitor bracket, (2) ACC60 clamps, (2) washers, and (2) wingnuts. **Step 1:** Apply pressure to the rear side of the leveling gauge clipped into the monitor mount to remove it. **Step 2:** Push the provided bolt through the hole in the ACC60 and place the ACC60 in the desired location. **Step 3:** Tighten the clamp to the tube using the plastic wingnut. **Step 4:** Set your monitor bracket onto the protruding bolts using the of the ACC60 using the center holes on the monitor bracket., adjust ACC60 position if necessary. **Step 5:** Lock your monitor bracket to the ACC60s by placing your washers and locking with provided wingnuts. **Step 6:** Reference the included manufacturer monitor mount instructions for fastening your monitor to the bracket.

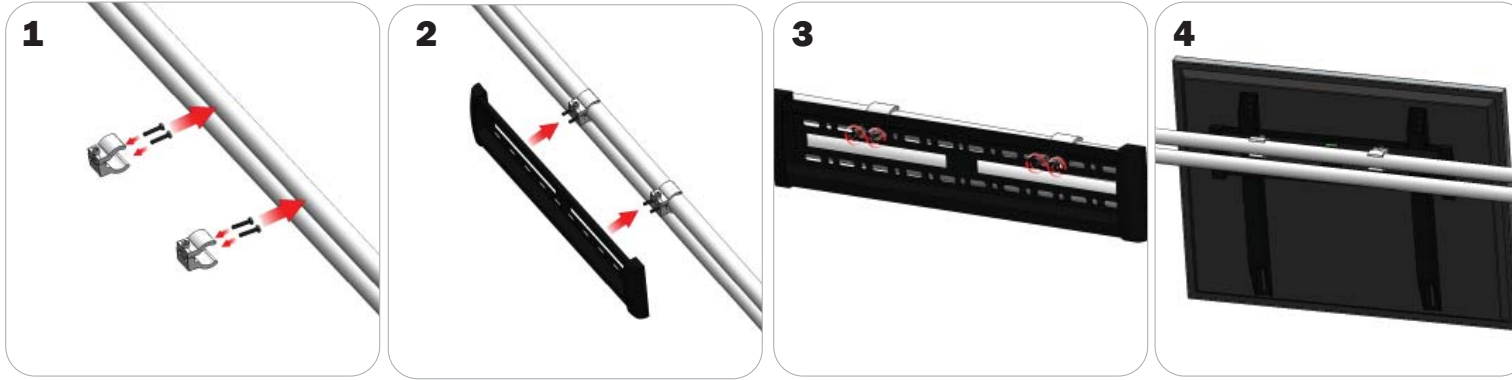
TCH Clamp Connection (Tablet Stands)



Locate all components needed to assemble the monitor mount with the TCH tube method. You will need (1) monitor bracket, (2) TCH clamps, (2) bolts, (2) washers, and (2) wingnuts. Determine your desired monitor location. **Step 1:** Fit the provided bolts through the TCH clamps then reassemble the clamp. **Step 2:** Lock the clamp onto the tube with the allen head screws on the clamp. **Step 3:** Align your monitor bracket so that the left and right holes slide onto the bolts behind them. Use your washers and wingnuts to lock your monitor bracket in place. **Step 4:** Reference the included manufacturer monitor mount instructions for fastening your monitor to the bracket.

TUBE CONNECTION

TC-30 Clamp Connection



Locate all components needed to assemble the monitor mount with the TC-30 tube clamp method. You will need (1) monitor bracket, (2) TC-30-SILVER clamps, (4) BOLT-1 screws, and (4) flange wingnuts. **Step 1:** Insert the pan-head screws through the holes of your TC-30 clamps. Attach the TC-30 clamps to the tubes but do not tighten. **Step 2:** Set your monitor bracket onto the protruding pan-head screws on your clamps using the holes in the monitor bracket. **Step 3:** Apply your flange wingnuts to the front of your monitor bracket to lock it to the clamps. Lock your clamps securely into place. **Step 4:** Reference the included manufacturer monitor mount instructions for fastening your monitor to the bracket.