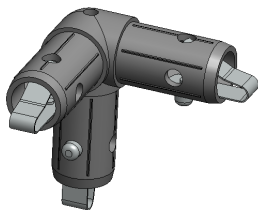
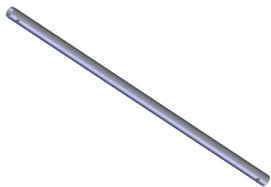


Included In Your Kit

Tools, Components, & Connectors



TC-30-3W x8



COL-T1 x8



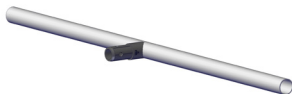
COL-T2 x8



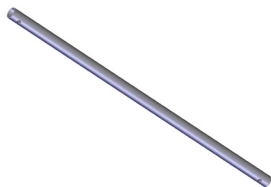
COL-T4 x4



COL-T3 x4



SP COL-T1 x2

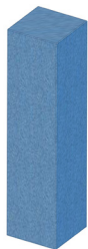


COL-T1-BL-T6 x1



E26 LIGHT BULB SOCKET FLEX ROD-32" x2

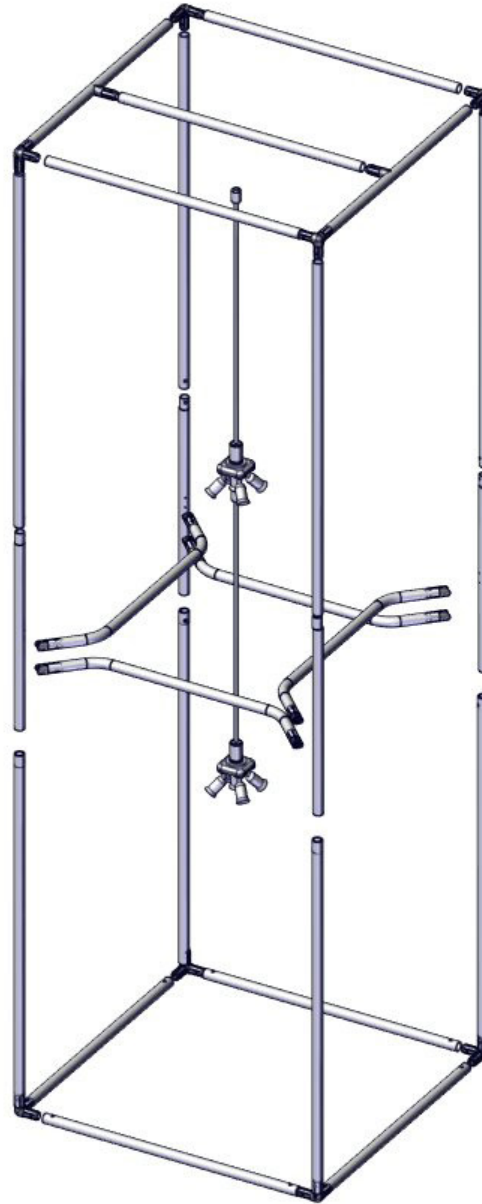
Graphics



COL-02-G x1

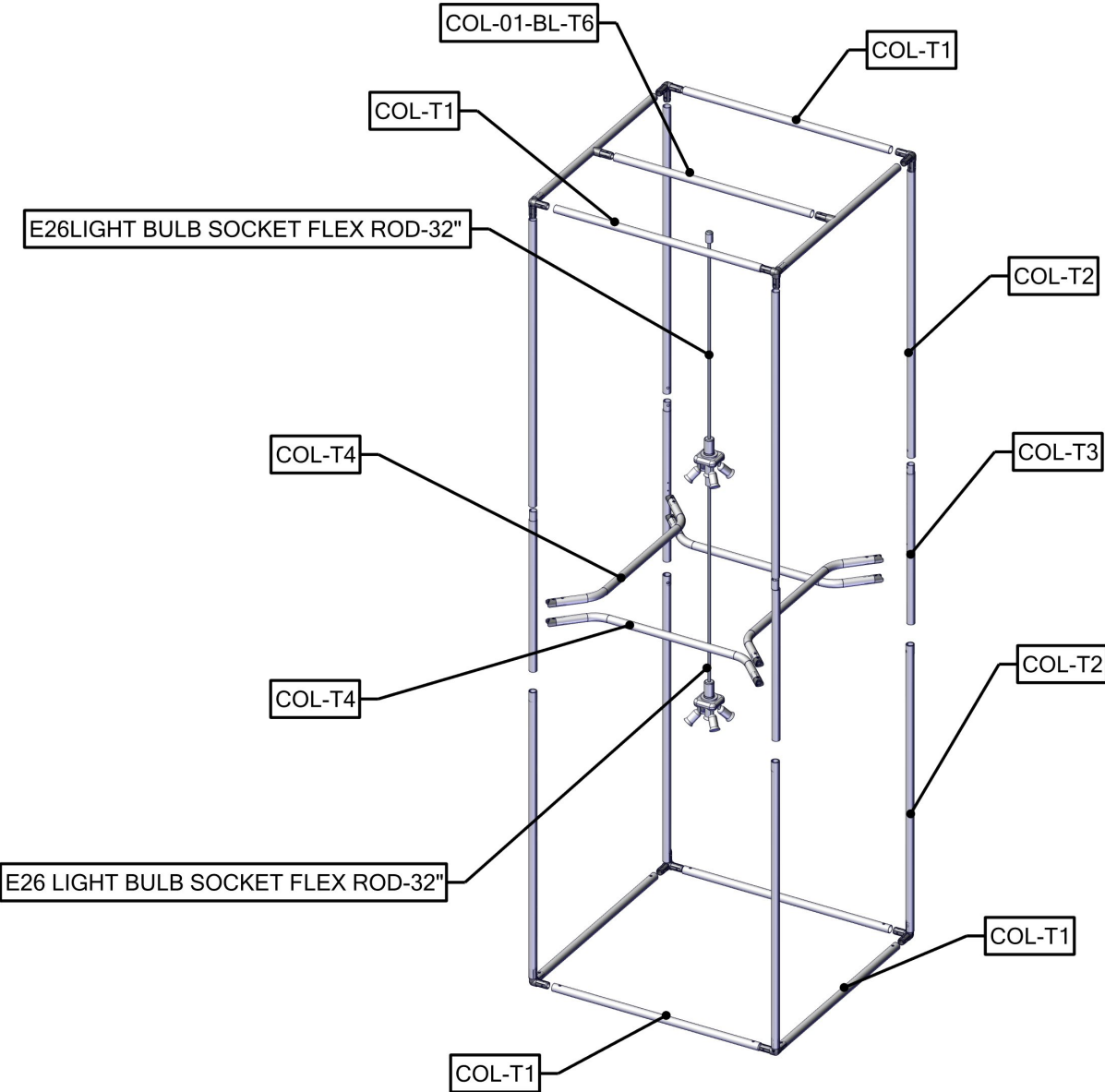
Exploded View

COL-02-BL



Labeling Diagram

COL-02-BL



Kit Assembly

Step by Step

Step 1.

Gather the components to build the frame. Use the Exploded View and the Labeling Diagram for part labels.

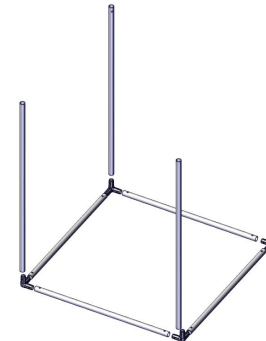
Reference Connection Method(s) 1, 2 and 3 for more details.



Step 2.

Gather the components to build the frame. Use the Exploded View and the Labeling Diagram for part labels.

Reference Connection Method(s) 1 for more detail.



Step 3.

Gather the components to build the frame. Use the Exploded View and the Labeling Diagram for part labels.

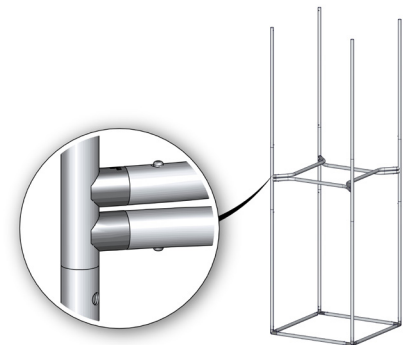
Reference Connection Method(s) 1, 2 for more detail.



Step 4.

Gather the components to build the frame. Use the Exploded View and the Labeling Diagram for part labels.

Reference Connection Method(s) 1, 2 for more detail.



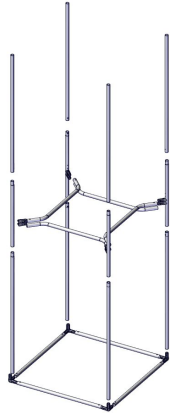
Kit Assembly

Step by Step

Step 5.

Gather the components to build the _____. Use the Exploded View and the Labeling Diagram for part labels.

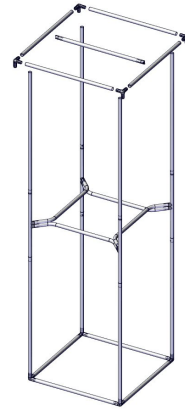
Reference Connection Method(s) 2 for more details.



Step 6.

Gather the components to build the _____. Use the Exploded View and the Labeling Diagram for part labels.

Reference Connection Method(s) 2 for more details.

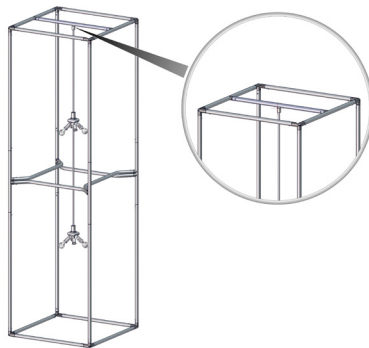


Step 3.

The cord is wrapped about the middle tube and scured in place with a white plastic clip.

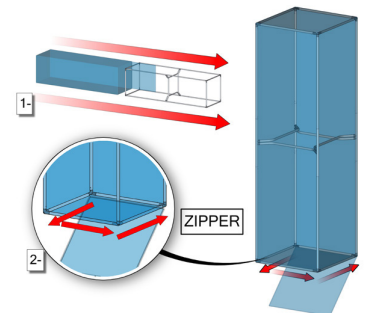
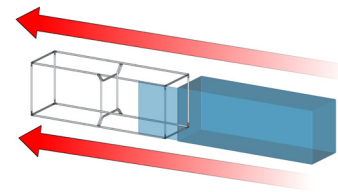


WHITE CLIP



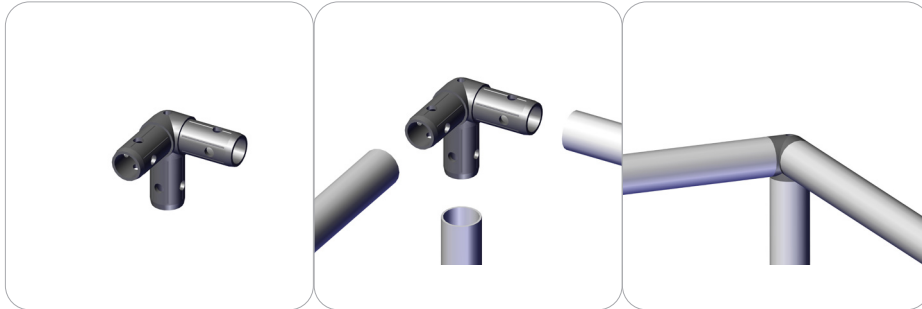
Step 4.

To attach graphic lay tower on it side. Would be advised with 2 people to insure the graphic stays clean. Slide over top of tower. Final step when graphic is on correctly, zipper at the bottom as shown in picture, should be zipper counter clockwise.



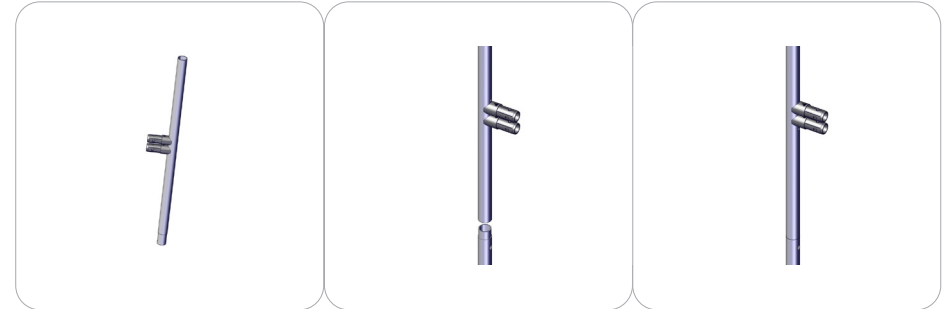
Connection Methods

Connection Method 1: COL-T1/ COL-T2/ TC-30-3W



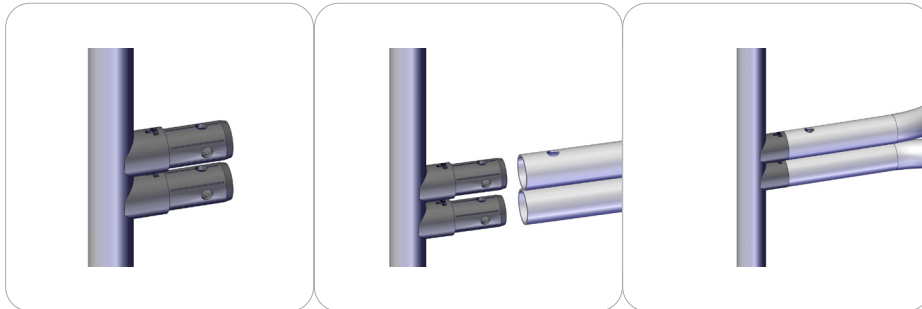
Connect tubes (COL-T1) and side tube (COL-T2) to TC-30-3W. Make sure the tubes properly snap into place. Repeat previous step until all four sides of bottom are assembled.

Connection Method 2: PMFC2 / PHFC2



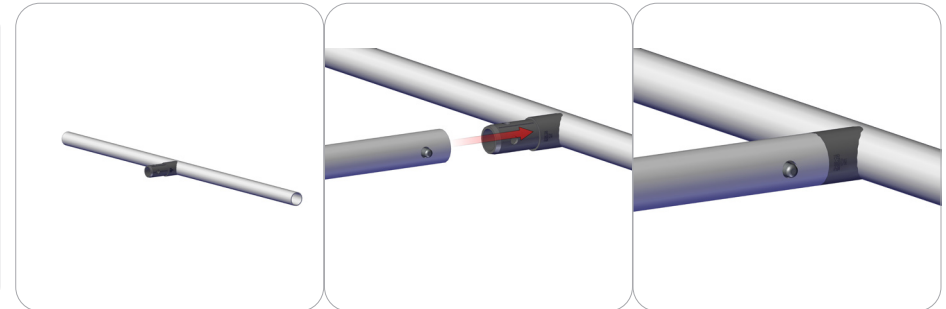
Connect tube (COL-T3) to (COL-T2) Make sure the tubes properly snap into place.

Connection Method 3: COL-T3/ COL-T4



Connect curved spreader tubes (COL-T4) to side tubes (COL-T3). Continue connecting middle section of tube to bottom frame section.

Connection Method 4: COL-01-BL-T6/ SP COL-T1



Connect COL-01-BL-T6 to SP COL-T1. Be sure the tubes properly snap into place. This connection is at the top of the tower.