

Formulate 8' Four Sided Tower

COL-03-BL

Mix and match the Formulate® line of towers to add architecture and drama to any event or interior space. Rectangular-shaped towers come in 12ft, 10ft and 8ft heights and 3ft square at the top and bottom. They combine the latest developments in fabric printed technology with aluminum tube frames to add dimension, decor and sculpture to any event, stage set, tradeshow booth or interior space. Formulate towers accommodate internal LED lighting to create a glowing effect.



TOP VIEW

We are continually improving and modifying our product range and reserve the right to vary the specifications without prior notice. All dimensions and weights quoted are approximate and we accept no responsibility for variance. E&OE. See Graphic Templates for graphic bleed specifications.

features and benefits:

- State-of-the-art 30mm aluminum tube frame with snap button assembly
- Easy to store and ship
- Quick to set up
- Kit includes: one frame, one dye-sublimated zipper pillowcase graphic, internal lighting components, and one wheeled storage case
- Lifetime hardware warranty against manufacturer defects

dimensions:

Hardware

Assembled unit:
36" w x 96" h x 36" d
915mm(w) x 2439mm(h) x 15mm(d)

Approximate weight (includes graphic):
24 lbs / 11 kg

Graphic

Refer to related graphic template for more information.

Visit:
www.exhibitors-handbook.com/graphic-templates

Shipping

Packing case(s):
1 OCL

Shipping dimensions:
OCL:
56" l x 19" h x 19" d
1422mm(l) x 483mm(h) x 483mm(d)

Approximate shipping weight (with case):
44 lbs / 20 kg

additional information:

Graphic material:
Dye-sublimation zipper pillowcase fabric

When included in a larger kit, a different packaging solution will be listed to accommodate all contents of the kit. Individual packaging no longer provided.

Included In Your Kit

Tools, Components, & Connectors



TC-30-3W x8



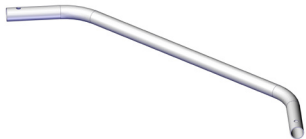
COL-T1 x8



COL-T2 x4



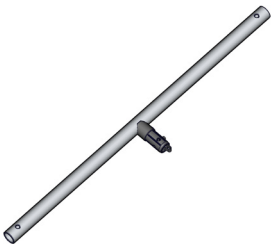
COL-T2-SW x4



COL-T4 x4



COL-01-BL-T6 x1



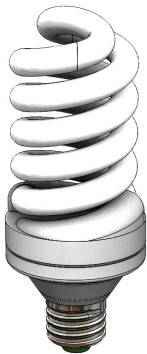
SP-COL-T1 x2



LIGHT-HANGING-EXTENSION-32 x2



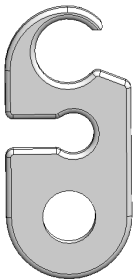
LIGHT-HANGING-5WAY-SOCKET x2



LIGHT-HANGING-BULB x4

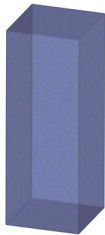


LIGHT-HANGING-CABLE x1



WHITE CLIP x1

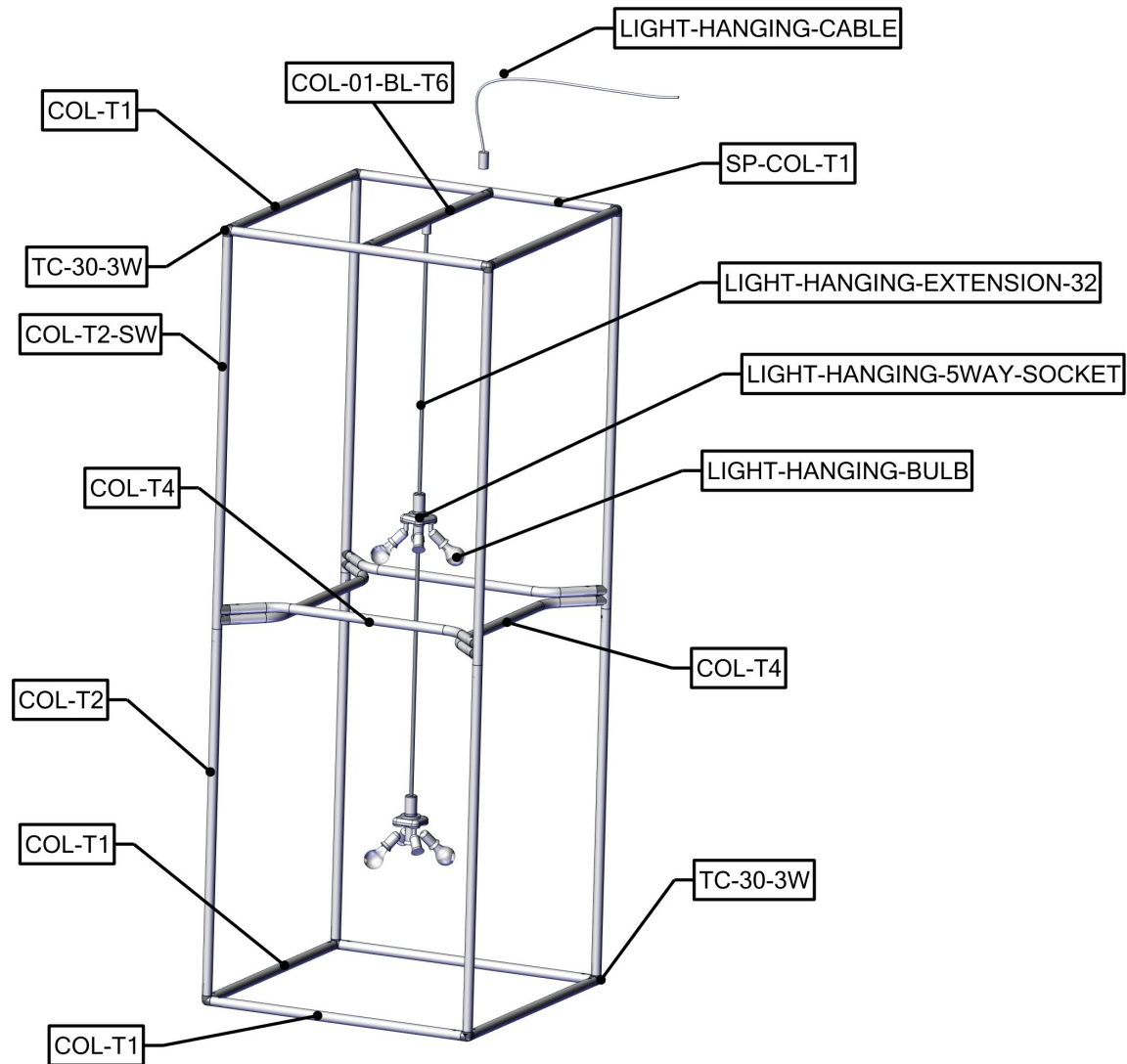
Graphics



COL-03-G x1

Exploded View

COL-03-BL



Kit Assembly

Step by Step

Step 1.

Gather the components to build the base of the frame. Use the Exploded View for part labels.

Reference Connection Method 1 for more details.



Step 2.

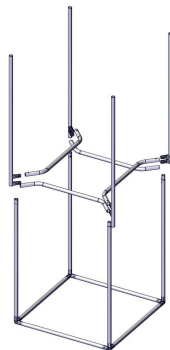
Gather the components to build the bottom of the frame. Use the Exploded View for part labels.



Step 3.

Gather the components to build the middle of the frame. Use the Exploded View for part labels.

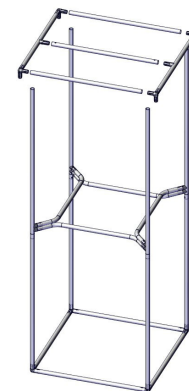
Reference Connection Methods 2 & 3 for more details.



Step 4.

Gather the components to finish building the frame. Use the Exploded View for part labels.

Reference Connection Methods 1 & 4 for more details.

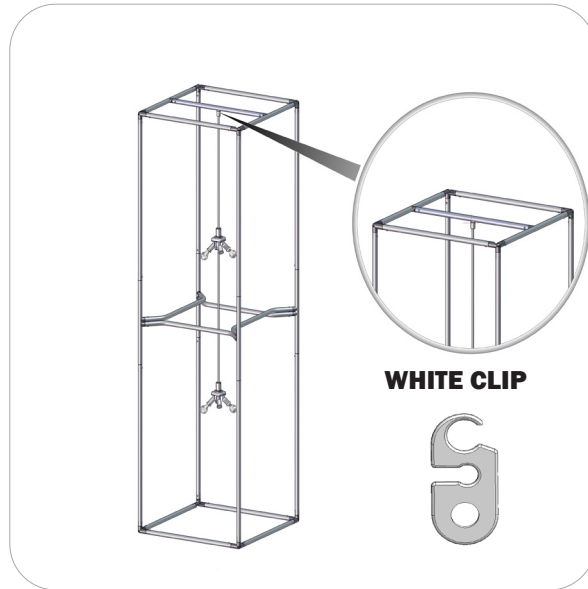


Kit Assembly

Step by Step

Step 5.

Snap the white plastic clip onto the middle of the COL-T1-BL-T6 and wrap the cord around the tube and through the clip.

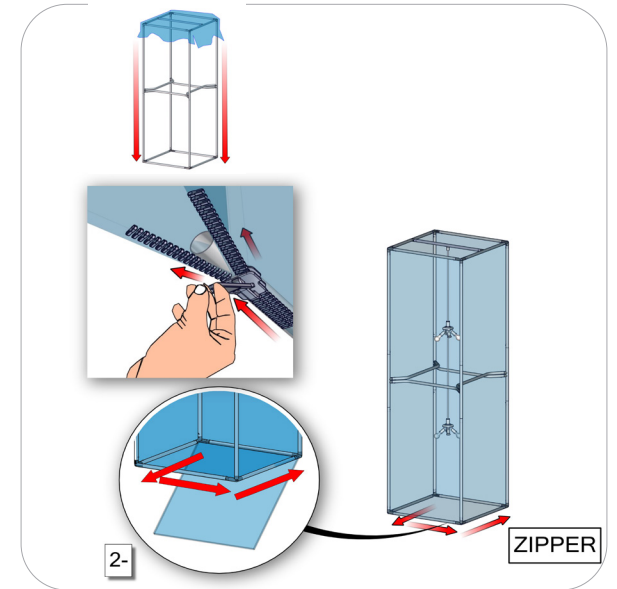


Step by Step

Step 6.

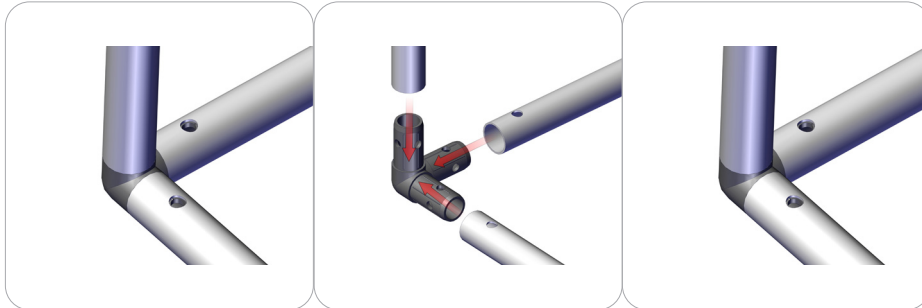
Slide the graphic over the frame and zip it shut on the bottom.

Set-up is complete



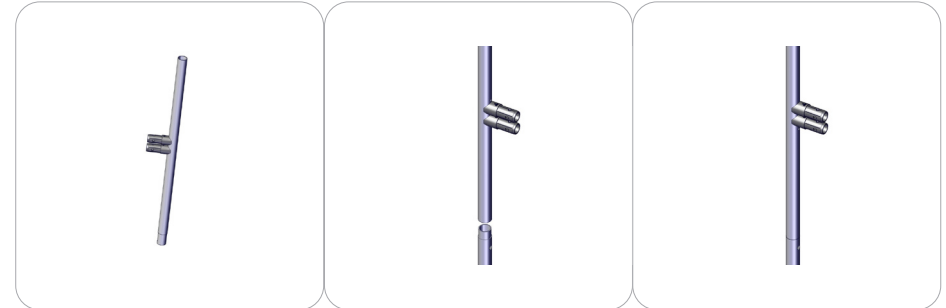
Connection Methods

Connection Method 1: COL-T1/ COL-T2/ TC-30-3W



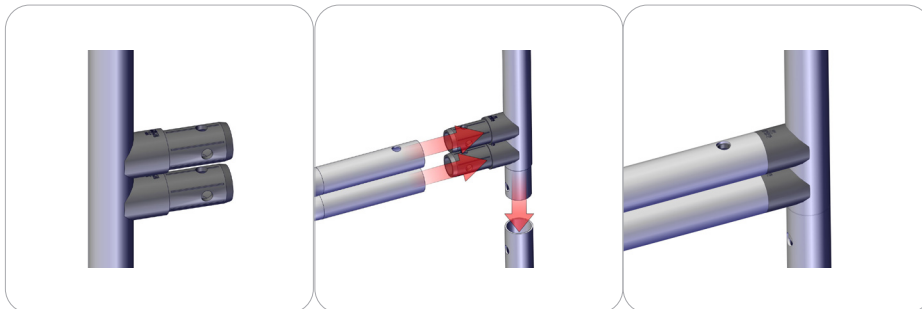
Connect tubes (COL-T1) and side tube (COL-T2) to TC-30-3W. Make sure the tubes properly snap into place. Repeat previous step until all four sides of bottom are assembled.

Connection Method 2: COL-T2/ COL-T3



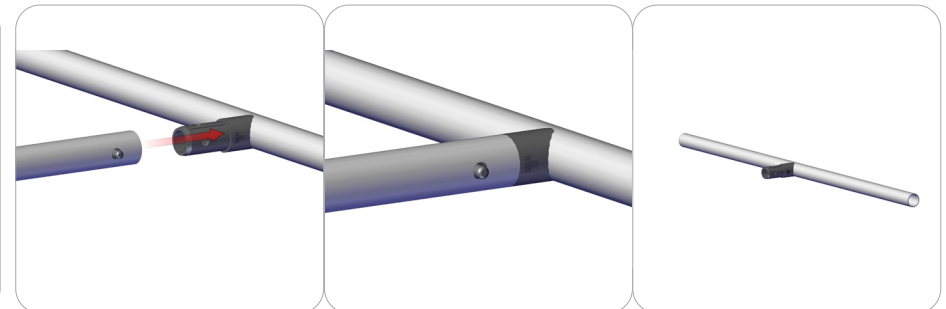
Connect tube (COL-T3) to (COL-T2) Make sure the tubes properly snap into place.

Connection Method 3: COL-T4/ COL-T2-SW



Connect curved spreader tubes (COL-T4) to side tubes (COL-T3). Continue connecting middle section of tube to bottom frame section.

Connection Method 4: COL-01-BL-T6/ SP-COL-T1



Connect COL-01-BL-T6 to SP-COL-T1. Be sure the tube properly snap into place. This connection is at the top of the tower.