

Setup Instructions

Blimp Square Tower



GENERAL INFORMATION

Thank you for choosing XYZdisplays!

Please check our **Waveline** playlist on the XYZdisplays YouTube channel for quick instructional videos on this display style.

For additional information please feel free to call us at **1.973.515.5151** or visit our website at xyzdisplays.com.

Our office hours are weekdays 9:00 AM to 6:00 PM EST. If you need assistance over the weekend, please email sales@xyzdisplays.com and one of our staff members will respond as soon as possible.

TOOLS

No tools required

PARTS

(A) 16 straight poles:
8x part 3
8x part 12



(B) 16 straight corner poles: part 35



(C) 4 double circular feet: part 33



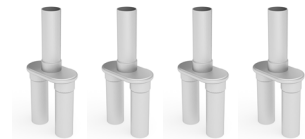
(D) 4 90 degree clamps



(E) 4 fabric graphics



(F) 4 top support post: part 56



(G) 4 rounded corner poles: part 112



(H) 4 square tower support poles:
part 46



(I) 1 4-way connector pole: part 42

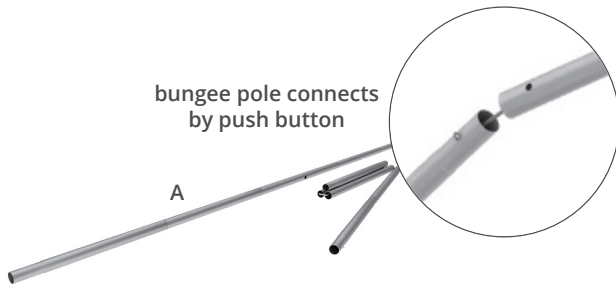


(J) 1 carousel pole: part 44



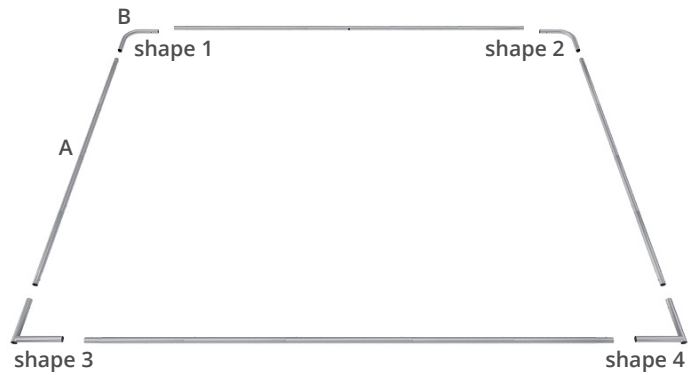
STEP 01

Assemble straight poles (A).



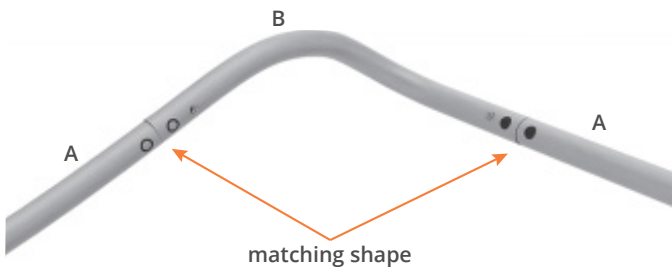
STEP 02

Connect corner poles (B) to straight poles (A) with matching shape codes. Connects by push button.



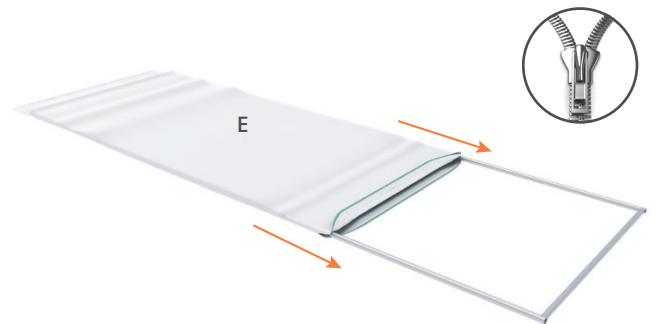
STEP 03

Repeat step 2 for the other three corners.



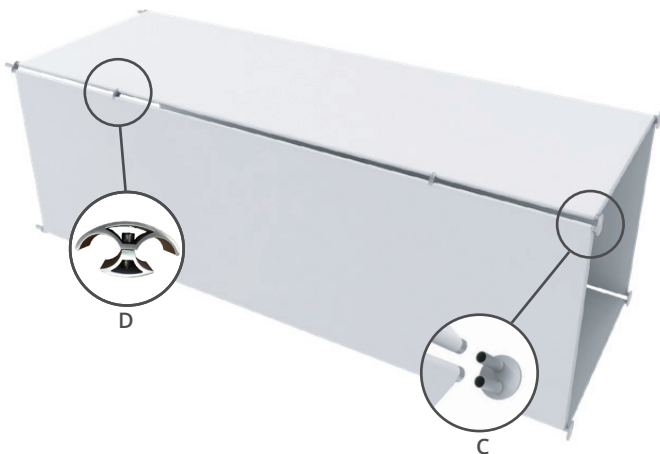
STEP 04

Unzip fabric graphic (E) and lay image face up. Slide fabric onto frame like a pillow case. Pinch graphic closed at bottom to zip up.



STEP 05

Repeat step 1-4 for the other three display panels. Install bottom circular feet (C) by joining two panels together and inserting dual posts into bottom of frame corners. Install 90 degree clamps (D) between panels for stability. Do this for all four sides of the tower.



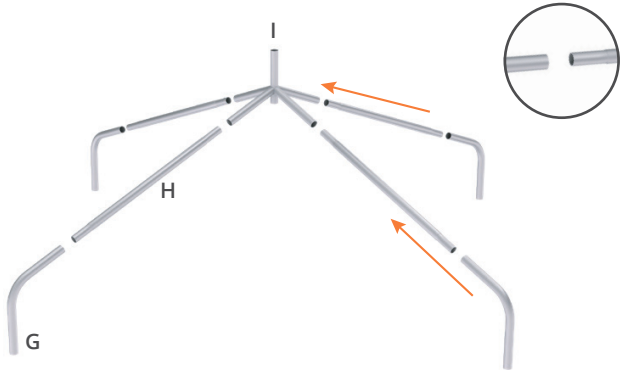
STEP 06

Install top support posts (F) by joining two panels together and inserting dual posts into bottom of frame corners. Do this for all four sides of the tower.



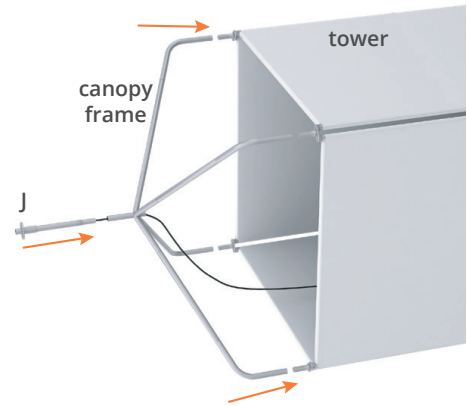
STEP 07

Assemble canopy frame by pushing and pulling round corner poles (G), square tower support poles (H), and 4-way connector pole (I) together.



STEP 08

Connect canopy frame to the tower. Insert center carousel pole (J) by running the power cord down through the canopy frame center pole and pushing into place.



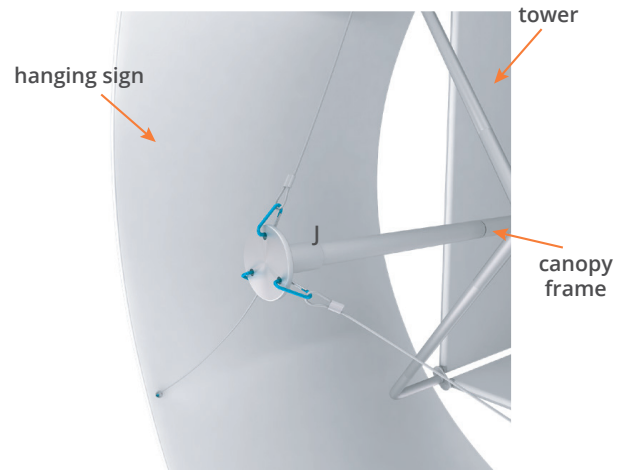
STEP 09

See tapered tube instructions for top hanging sign.



STEP 10

With tower and hanging sign on their sides, attach hanging sign to center carousel pole (J) using cables and clips. Push tower up into position.



STEP 11

Complete.



QUICK VIEW

Hardware configuration.

