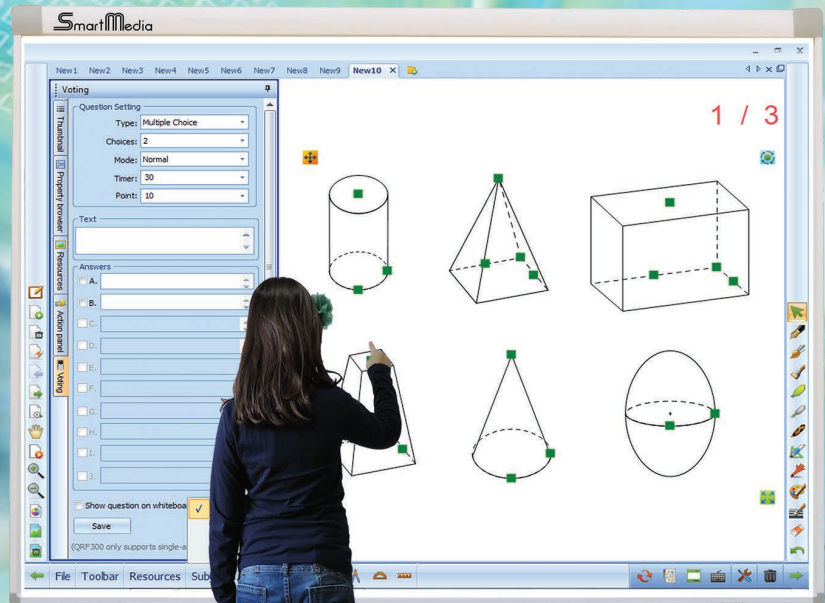


Interactive Optical Whiteboard SmartMedia Multitouch Series CCD 2 touches

A powerful tool
to make learning
interactive

available in 82" or 100"
versions

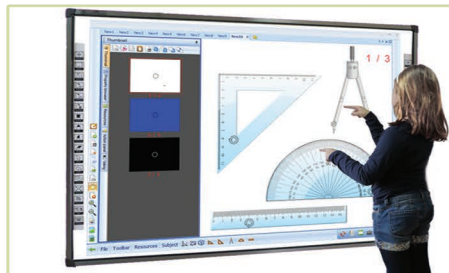


Codd. IWB-CCD02-F e IWB-CCD02-100-F

WHITEBOARD FEATURES

Infrared CCD technology with two optical cameras, multitouch interaction that allows interaction with both the finger and the pen.

- High resolution and precision that allows 2 users to simultaneously discrete
- Erasable anti-reflection surface
- Equipped with Pen Tray (pen tray)
 - Connection via USB cable or optional wireless kit
- Possibility of adding two amplified speakers complemented by RMS 40W or 60W RMS wall



WHY CHOOSE SMARTMEDIA?

- For your search for innovative products
- For the reliability and variety of solutions
- For the effort of making each model cost effective
- For the excellent service in support of its products

SOFTWARE FEATURES

- Includes all the features to create lessons in a simple and fast way
- Compatible with Windows XP, Vista, Seven, 8, 8.1, 10, MacOS
- IWB format support for sharing lessons with other whiteboards
- Intuitive user toolbar
- Multi language
- Writing text and drawing shapes on video
- Allows you to annotate on any application and save in many formats to easily share them with the whole teacher community (.pdf, .ppt, .doc, .html, .avi and all image formats)
- Save and playback first what was written and drawn

Included Software

- Check all functions of PC or notebook and the applications
- Design perfect geometric shapes
- Save and print what has been done with the whiteboard
- Write on the applications, create notes, and highlight or enlarge portions of the screen
- Instant connectivity in real-time on camera, webcam, document camera or other digital devices and ability to annotate the video
- Distance Learning: connection in conference mode via Internet or LAN and / or wireless
- Integration with major video conferencing systems
- Support format .IWB common file format (CFF) for interactive whiteboards
- Compatible with most popular operating systems
- Multi-user with customization of the software for single user and password protection
- Automatic update of the new release of the software available
- Find online resources by using a keyword
- Export: image files (.jpg, .jpeg, .bmp, .png, .tif, .tiff, .gif), pdf, power point (.ppt, .pptx), word (.doc, .docx) excel (.xls, .xlsx), web page (.html)

Screen tool with customizable background color or with customized image.

Handwriting recognition and conversion to text (OCR), through the operating system.

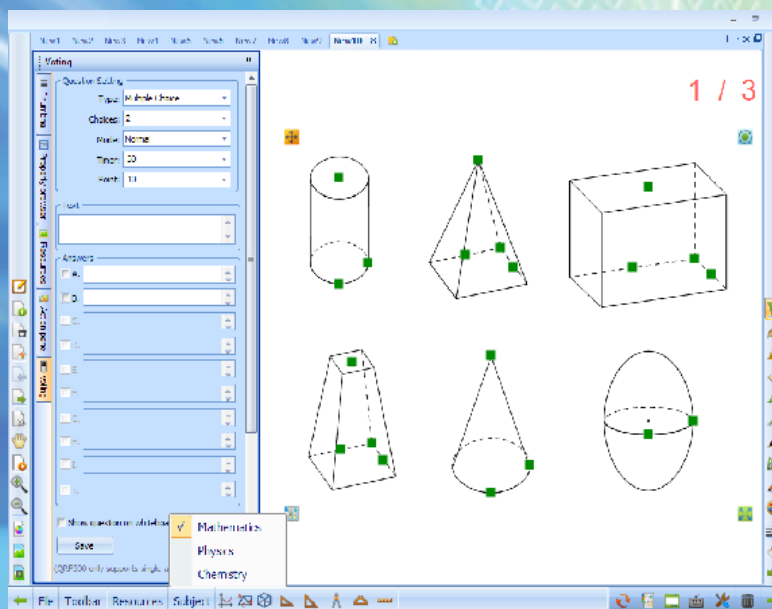
Reflector tool, available in various shapes: circle, triangle, rectangle, bow, pentagon and star with five points.

Customizable background.

Graphical interface viewable frame, window or full screen modes.

Image capture tool: the ability to import into a project an image of the entire screen to the underlying software, a rectangular region or an irregular region.

On-screen keyboard.



Recording interactive lessons including voice in .avi format.

Tool Timer / Clock: you can time the lesson or an exercise, start a countdown or display the current time.

Import multimedia files: videos, flash files, audio and images

Geometry tools: bracket 30° 45°, ruler, protractor and compass, measuring the sides and angles.

Types of pens: pencil, standard pen, brush, Bamboo pen, highlighter, pen texture, smart pen (for shape recognition) and magic pen (for recognition tool).

Mathematical formula editor

Creation of multiple files with ability to switch from one file to another without losing the work you created earlier.

Voting system: creation and visualization of tests and quizzes for SmartMedia systems responders.

Geometric shapes in 3D.

School subjects, including: mathematics, chemistry and physics.

Multimedia gallery with over 10,000 resources (learning objects) to simplify the creation of classes.

Preview the slides created.

Instant replay of what was done on the slide.

Technical Specifications

MODEL	IWB-CCD02-F	IWB-CCD02-100-F
Diagonal	82"	100"
Dimension	1670 x 1224 x 37 mm	2200 x 1226 x 37 mm
Technology	CCD Infrared with two optical cameras	CCD Infrared with two optical cameras
Writing method	Pen or fingers	Pen or fingers
Proportions	04:03	16:09
Active area	78" 3/4	96" 1/2
Projection area	78" 3/4	96" 1/2
Resolution	32768 x 32768	32768 x 32768
Number of touches	2	2
Resolution per Inch	Over 200 lines	Over 200 lines
Transmission speed	480 points / second	480 points / second
Scan speed	<8ms	<8ms
Precision	0.1 mm	0.1 mm
Consumption	< 2W	< 2W
Connection	USB o Wi-Fi optional	USB o Wi-Fi Optional
Driver Compatibility	Win2000/2003/XP/Vista/Win 7/8/8.1 & 10, Mac OS, Linux	Win2000/2003/XP/Vista/Win 7/8/8.1 & 10, Mac OS, Linux
Pen type	Without battery	Without battery
Frames	Aluminium	Aluminium
Surface	Erasable steel	Erasable steel
Weight	21 Kg	25 Kg
warranty	3 years, extension to 5 years upon registration on the site	3 years, extension to 5 years upon registration on the site
Accessories supplied	Pens: 3- Eraser- Pen Tray (pen tray)- Wall mount- USB cable- User manual- LIM software and drivers for managing and using the whiteboard	Eraser- Pen Tray (pen tray)- Wall mount- USB cable - User manual- LIM software and drivers for managing and using the whiteboard
Function keys	Optional	Optional



Cl@ss Kit 2.0 SmartMedia:

- - Wifi connection
- - Interactive Whiteboard + IWB software
- - Video projector
- - Teacher PC
- - Student devices (Tablet, PC, Smartphone)
- - Classroom management software

SmartMedia Pro for the sharing in each environment

Accessories

Mounting Options



- **Wall Mount for Interactive Whiteboards**

SPRE - height-adjustable by an electric motor with a remote control system and safety switch

SPRP - height-adjustable by a manual gas spring system

Both options available with an extension arm for a short-throw projector or with a support bracket for an ultra short-throw projector.

- **Mobile Stand for Interactive Whiteboards**

SRE - height-adjustable by an electric motor with a remote control and safety switch

SRP - height-adjustable by a manual gas spring system

Both options available with an extension arm for a short-throw projector or with a support bracket for an ultra short-throw projector



- **SBQ-UN - Universal Mobile stand for Interactive Whiteboards**

- **Laptop Security locker (ASN/ASN-P/ASN-SRE)** for notebooks with 10" to 19" displays.



- **Laptop shelf (MESRE)**

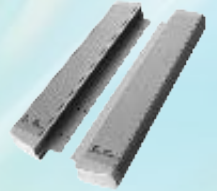
Support for a PC / Notebook, compatible with SRE and SRP



Optional

- **One Pair Amplified Speakers (IWB-40W)**

2 x 20 watt RMS speakers mount directly to the whiteboard frame



- **Wireless Connection Device (SKQW-UN)**

Wirelessly connect from whiteboard USB to Wi-Fi 802.11b/g/n, it includes 1 LAN and 1 USB ports



- **Wireless Interactive Tablet (STW)**
The wireless tablet allows the teacher to interact with the PC moving freely in the classroom.



- **Intelligent Pen Tray (IWB-PT)**

Holds pens and includes 8 buttons for additional functions

- **DOCUMENT CAMERA AND VISUAL PRESENTER**

Allows you to capture any image or object from a work surface, maintaining high image quality in a portable system and reduced weight



- **Voting systems for testing and processing results with statistics and graphics with or without screen.**
Available Kit of 12, 24 or 32 radiofrequency responders

*The images of the product are indicative only and may change at any time without notice.