

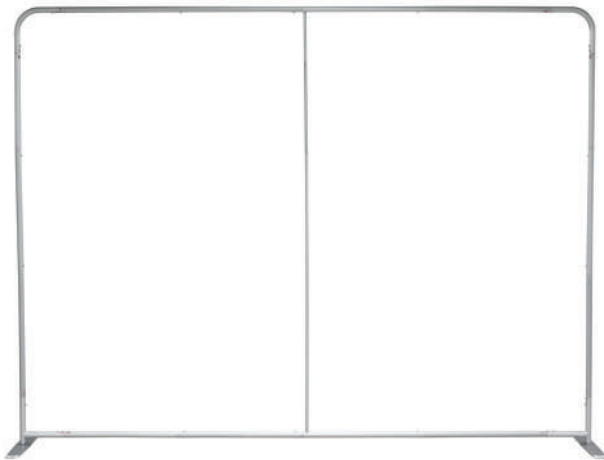
10FT EZ TUBE STRAIGHT 30

EZ TUBE FABRIC DISPLAYS

PRODUCT CODE: EZT1030G1



On frame On graphic



PRODUCT DESCRIPTION

With a sleek and thinner diameter, our EZ Tube Straight 30 frames are a great alternative to our premium backwall displays. Quickly assembled in just minutes, slide the tubes together and lock them in place with a push button snap to assemble the frame. Then, simply pull the pillowcase-like graphic over the frame and zip it shut. The bottom zipper — hidden from view, tightens the stretch fabric beautifully displaying your graphic from edge to edge. Disassembled, the lightweight frame and graphic fits inside a beautiful compact silver bag. Like our premium EZ Tube, the Straight 30 is also available in several sizes and shapes. Quantity pricing is available on our website.

DISPLAY DIMENSIONS 116"W x 87"H

GRAPHIC DIMENSIONS 118"W x 89"H

GRAPHIC MATERIAL

Stretch Fabric

GRAPHIC FINISHING

Sewn on the top, left, and right. Zipper on bottom.

DISPLAY CONSTRUCTION

Aluminum frame (30mm tubing)

SHIPPING WEIGHTS & DIMENSIONS

Shipping Weight	18 lbs (frame only)
	23 lbs (frame and graphic)
Shipping Dimensions	13"L x 53"W x 8"H

LARGE QUANTITY FREIGHT

Freight Shipping	24 boxes per 40"L x 48"W x 61"H skid
Freight Weight	467 lbs (frame only)
	587 lbs (frame and graphic)

GRAPHIC TURN AROUND TIME

2 business days after proof approval

AVAILABLE ACCESSORIES

Silver LED Light Black LED Light

AVAILABILITY

CA and PA



Silver bag

Side protrudes 1" away from frame



Flat feet (3.125"W x 15.75"L)



Internal bungee cord

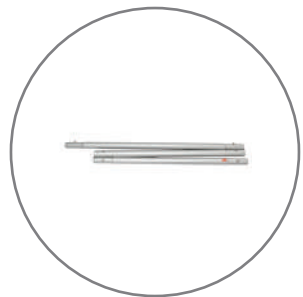


LED Light - Silver (Optional)

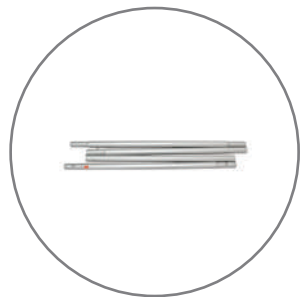


LED Light - Black (Optional)

PARTS LIST



Qty.2 - Main frame tubing
3-piece



Qty.2 - Main frame tubing
4-piece



Qty.2 - Top corner arches



Qty.2 - Bottom corner bases



Qty. 1 - Middle support bar



Qty.2 - Base/Foot



Qty. 2 - Bolt



Qty.2 - Washer

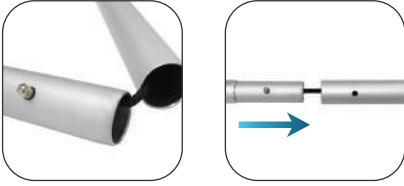
10FT EZ TUBE STRAIGHT 30

EZ TUBE FABRIC DISPLAYS

PRODUCT CODE: EZT1030G1

SET UP INSTRUCTIONS

A. Horizontal / Vertical frame Tubing



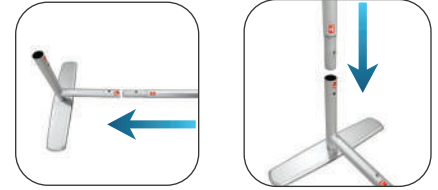
The main frame tubing and support bar are multi-piece units, connected with an internal bungee cord. Connect all of them together using the push caps and lay them to the side.

B. Bottom Corner / Feet

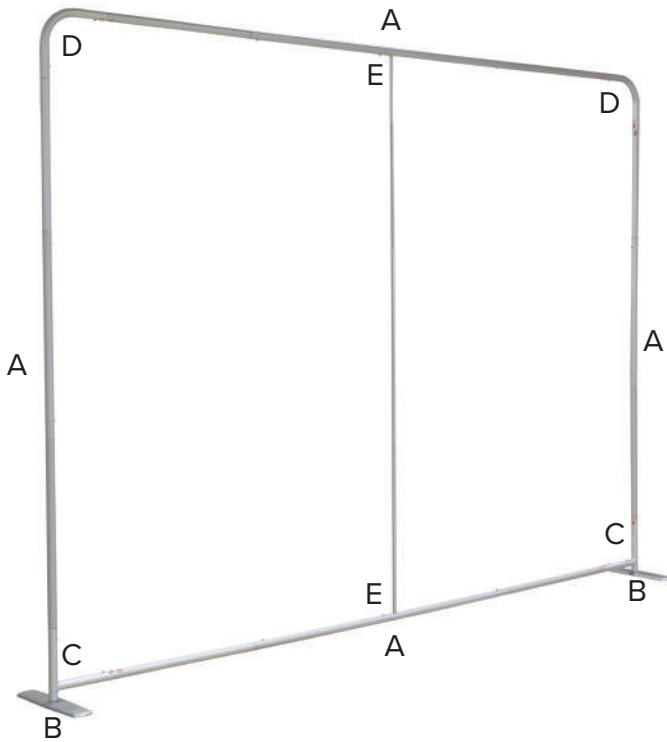


Attach each foot to a bottom corner base using a bolt and washer.

C. Bottom Corner / Horizontal and Vertical Tube



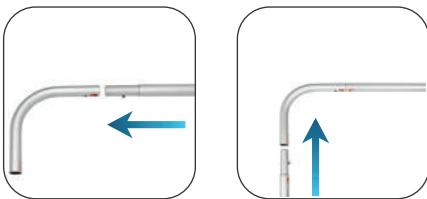
Attach each bottom corner base to each side of a horizontal and vertical frame tube. Each end is conveniently marked with a letter/number decal.



F

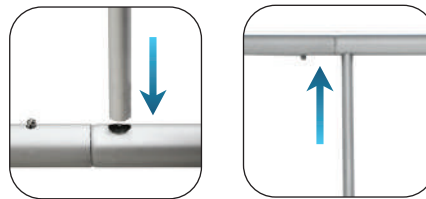


D. Top Arch / Horizontal and Vertical Tube



Attach each top corner arch to each side of a horizontal and vertical frame tube. Each end is conveniently marked with a letter/number decal.

E. Middle Support Bar



Complete the structure by sliding in the middle support bar, one end at a time.

F. Install Graphic



Drape the top of the frame, starting with the open end (bottom) of the graphic. Pull the graphic all the way down and zip the bottom shut to maximize tension.