

LUMIÈRE LIGHT WALL® DOOR

LUMIÈRE LIGHT WALL®

PRODUCT CODE: LLW-DOORG



On frame On graphic



PRODUCT DESCRIPTION

The Lumière Light Wall® Door option gives you the comfort of a storage area within the design of a quick and easy pop up display.

DISPLAY DIMENSION	30.375" W x 88" H x 1.25" D
-------------------	-----------------------------

GRAPHIC DIMENSIONS

MAIN GRAPHIC	45.25" W x 89" H
--------------	------------------

GRAPHIC MATERIAL

Stretch Fabric

GRAPHIC FINISHING

Silicone beading is sewn around the perimeter of the fabric graphic. Silicone beading is hidden from view once installed.

DISPLAY CONSTRUCTION

Aluminum Frame

SHIPPING WEIGHTS & DIMENSIONS

Shipping Weight	16 lbs (frame only) 18 lbs (with graphic)
Shipping Dimensions	36" L x 13.5" W x 5" H

LARGE QUANTITY FREIGHT

Freight Shipping	30 boxes per 48" L x 40" W x 45" H skids
Freight Weight	512 lbs (frame only) 576 lbs (with graphic)

GRAPHIC TURN AROUND TIME

2 business days after proof approval

AVAILABILITY	CA
--------------	----



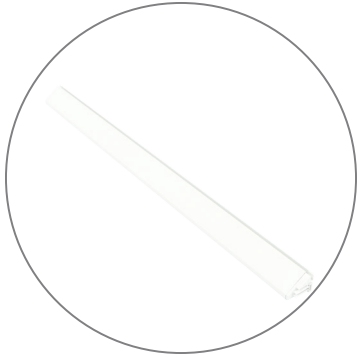
Note: Lumière frames are not included in this accessory package.

LUMIÈRE LIGHT WALL® DOOR

LUMIÈRE LIGHT WALL®

PRODUCT CODE: LLW-DOORG

PARTS LIST



Qty 2 - 1 Section Channel Bars



Qty 2 - Channel Bar Connectors



Qty 2 - 3 Section Channel Bars



Qty 2 - Horizontal Support Channel Bars



Qty 1 - Back Straps



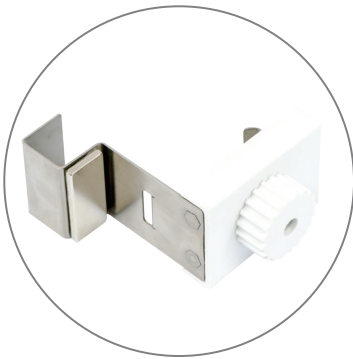
Qty 2 - Strap Screw Knobs



Qty 2 - Walkway Bars



Qty 6 - Door Hinge Connectors



Qty 1 - Magnetic Door Knob



Qty 1 - Magnetic Door Knob Placement



Qty 1 - Travel Bag

LUMIÈRE LIGHT WALL® DOOR

LUMIÈRE LIGHT WALL®

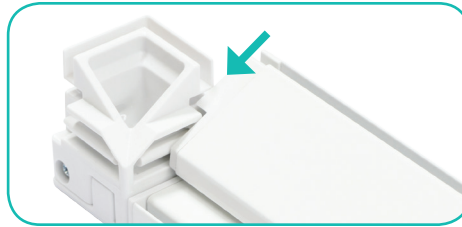
PRODUCT CODE: LLW-DOORG

SET UP INSTRUCTIONS 1/4

Connect Channel Bars



a. Connect the 1 Sectional Channel Bars and Channel Bar Connectors together.

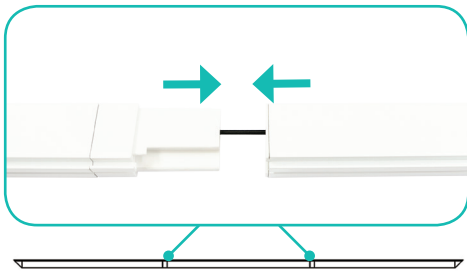


b. Slide the 1 Sectional Channel Bar on top of the Channel Bar.

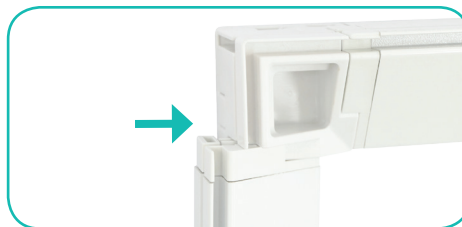


c. Complete the connection and repeat for other Channel Bars connection.

Assemble 3 Sectional Channel Bars



a. Expand each Channel Bars. Follow bungee to connect.



b. Slide the 3 Sectional Channel Bar onto the corner of the Channel Bar.

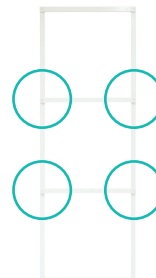


c. Repeat to connect for each corner of the Door frame.

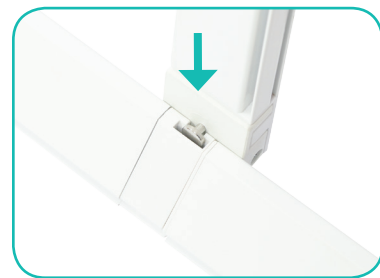
Connect Back Horizontal Channel Bars



a. Locate the metal pegs on the Horizontal Channel Bars at each end.



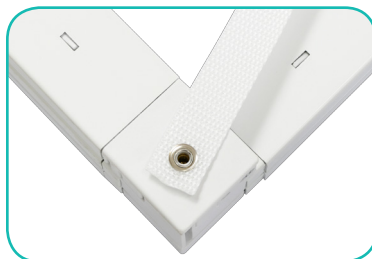
b. Slide the Horizontal Channel Bars onto the back slots of the 3 Sectional Channel Bars.



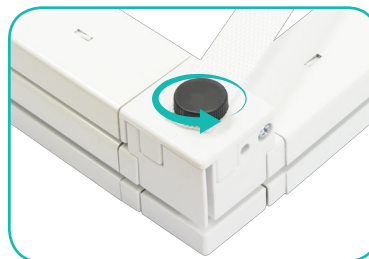
Install Back Straps



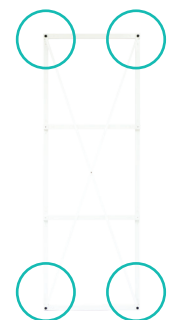
a. From the back of the Door frame, locate the screw holes in each corner.



b. Stretch out each of the Back Straps and align the grommet holes with the screw holes.



c. Then insert the screw knob to tighten and secure.



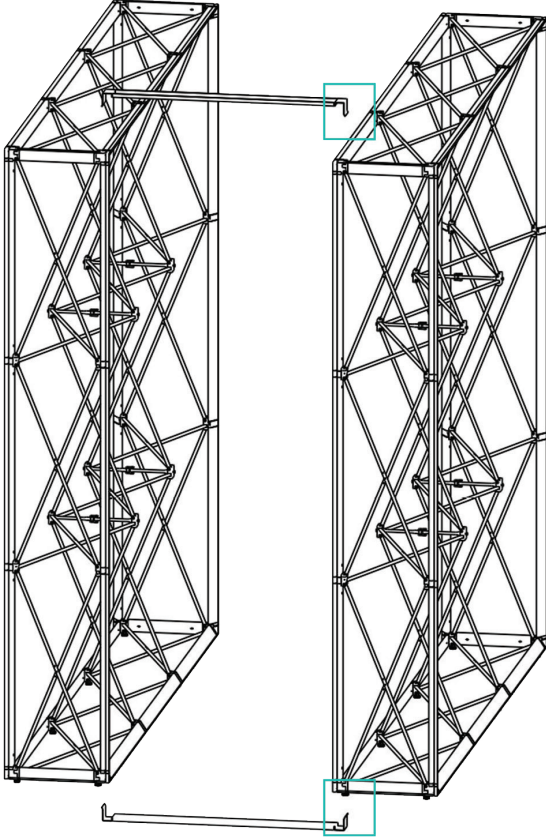
d. Repeat process in each corner.

LUMIÈRE LIGHT WALL® DOOR

LUMIÈRE LIGHT WALL®
PRODUCT CODE: LLW-DOORG

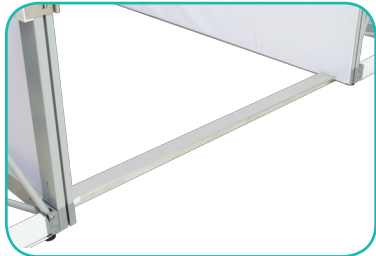
SET UP INSTRUCTIONS 2/4

Install Walkway Bars To Frames



a. In order to install the walkway bars, the displays must be evenly parallel and distant from each other (about 2 1/2 FT apart). Make sure there is enough room to install the Walkway Bars.

Note: Graphics must be installed on the displays first before installing the Door frame.

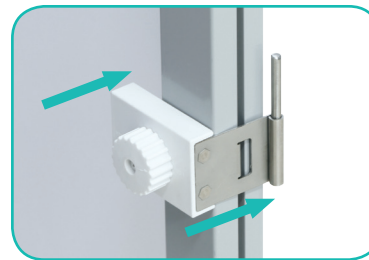
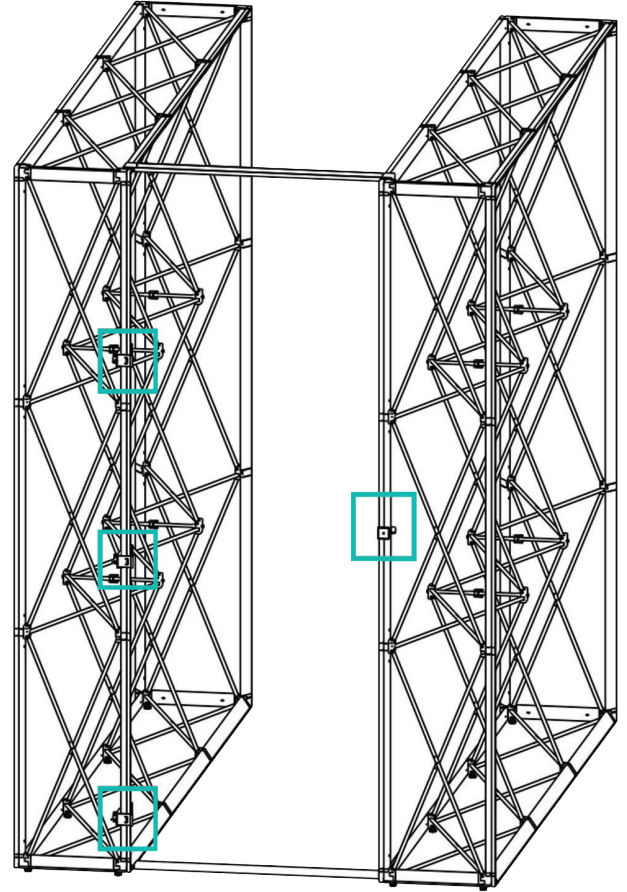


b. First place the bottom Walkway Bar underneath the Channel Bars.



c. Then install the top Walkway Bar onto the top Channel Bars.

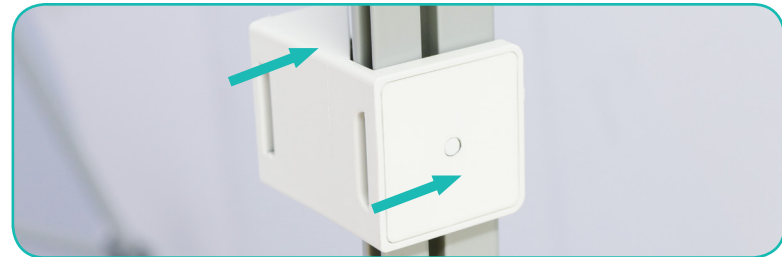
Connect Door Hinges To Frame



a. Slide the Door Hinge Pin Connectors on the side of the Channel Bar.



b. Turn the dial to lock the Door Hinge Connectors.



c. On the opposite side of the display, slide the Magnetic Door Placement Connector on the side of the Channel Bar.

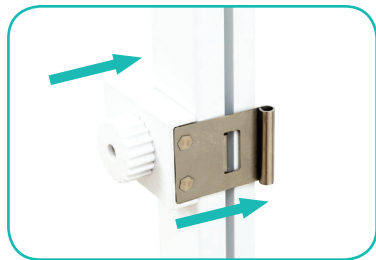
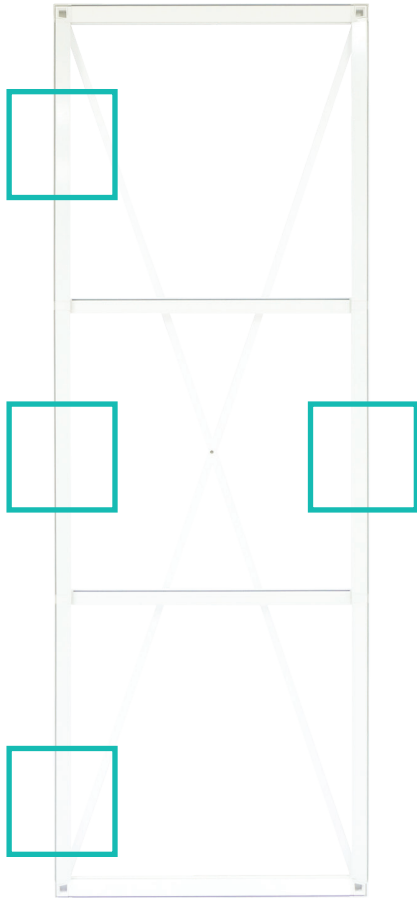
LUMIÈRE LIGHT WALL® DOOR

LUMIÈRE LIGHT WALL®

PRODUCT CODE: LLW-DOORG

SET UP INSTRUCTIONS 3/4

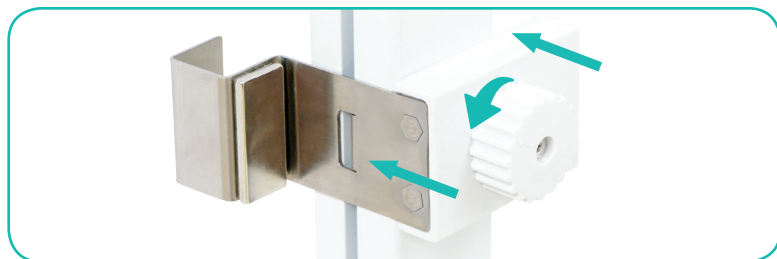
Connect Door Hinges To Door Frame



a. Slide the Door Hinge Knuckle Connectors on the back left side of the Door frame.

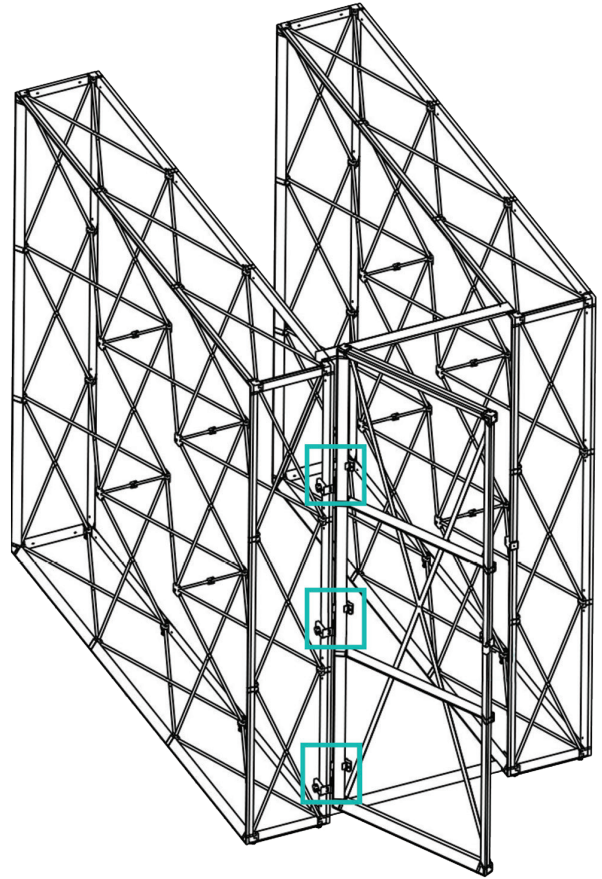


b. Turn the dial to lock the Door Hinge Connectors.



c. Slide the Magnetic Door Knob Connector on the opposite side of the back Door frame. Turn the dial to lock.

Connect Door To Frame



a. Lift up the Door frame with the Door Hinge Buckle Connectors and align the holes to insert the Door Hinge Pin Connectors.



b. Once the Door Hinge Connectors are aligned together, slide down the Door frame to secure.

LUMIÈRE LIGHT WALL® DOOR

LUMIÈRE LIGHT WALL®

PRODUCT CODE: LLW-DOORG

SET UP INSTRUCTIONS 4/4

Install Graphics



a. In each corner of the End Cap & Door frame, insert the silicone edge beading in the groove.



b. Then insert the remainder of the beading.



c. Install the remainder of the graphics. Make sure the inside graphic and End Cap graphic have pre-hemmed opening slots for the Magnetic Door Placement to fit.

Complete Installation

